

OTTAWA COUNTY ENGINEERS OFFICE

REFERENCE NO. 32-7-13-F
 EAST QUARTER POST SEC. 32
 CLAY TWP.
 SHEET 1 OF 1.

ROUTE: T-53 REIMAN RD.

TOWNSHIP: CLAY

SECTION: 32

T 7 NR 13 E.

PERSONNEL:
 M. WITTMAN, P.S.
 J. ALLEN

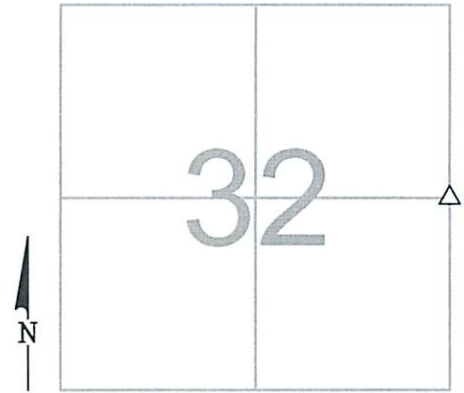
NORTHING:

EASTING:

DATE / WEATHER / TEMP:

JUNE 28, 2016
 PTLY SUNNY - W
 72° F

DATUM:



MONUMENT INFORMATION

MONUMENT TYPE: FD 7-1/2" x 6-1/2" LIMESTONE
 ON SURFACE - BELOW: 1.40'
LEFT - CL PAV'T - RIGHT: 1.30'

 FD DRILL HOLE IN STONE. USED DRILL HOLE.

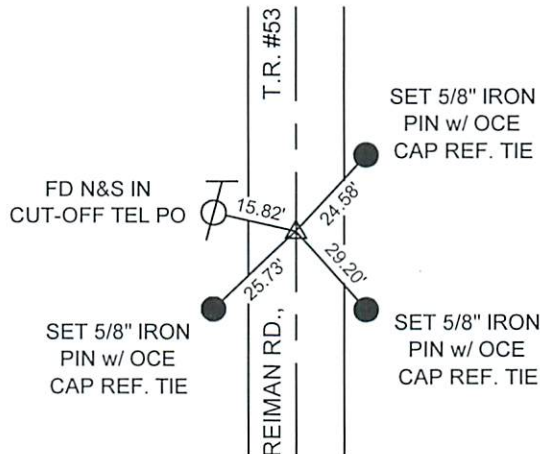


MISC. INFORMATION

FD PK NAIL 0.13' BELOW SURFACE, TIED W/X-TIES
 AND DUG FOR STONE. PK NAIL WAS 0.20' SOUTH
 AND 0.03' EAST OF DRILL HOLE.

JUNE 28, 2016

SET 1" SQUARE IRON PIN
 IN MONUMENT BOX OVER
 STONE



** ALL TIE DIST
 TO SET 5/8"
 IRON PINS
 ARE PLUMB