

OTTAWA COUNTY ENGINEERS OFFICE

REFERENCE NO. 31-7-13-B
 NORTH QUARTER POST SEC. 31
 CLAY TWP.
 SHEET 1 OF 1.

ROUTE: T-64 HOLT-HARRIGAN RD.

TOWNSHIP: CLAY

SECTION: 31

T 7 NR 13 E.

PERSONNEL:
 M. WITTMAN, P.S.
 J. ALLEN
 J. TIMMONS

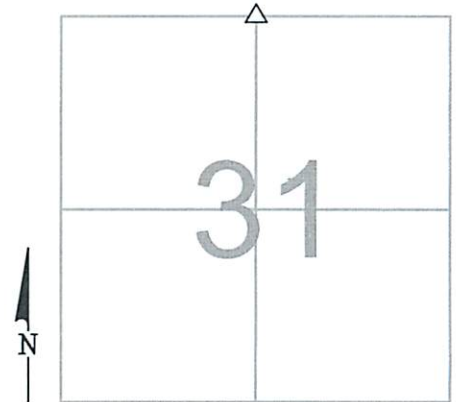
NORTHING:

EASTING:

DATE / WEATHER / TEMP:

JULY 8, 2016
 PTLY SUNNY - W-SW
 88° F - HUMID

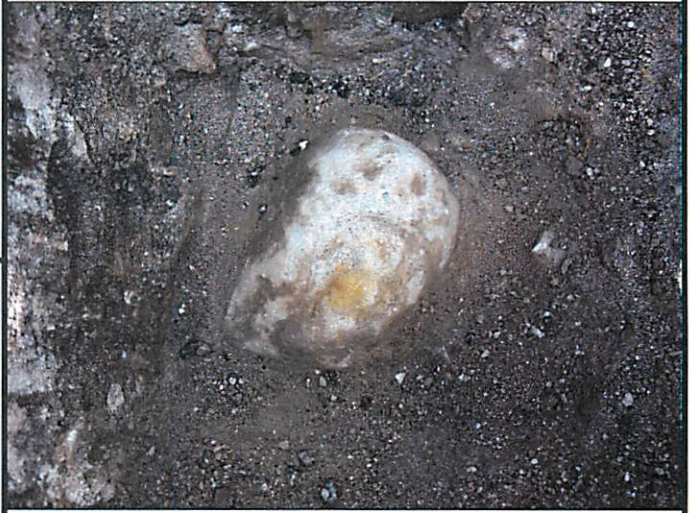
DATUM:



MONUMENT INFORMATION

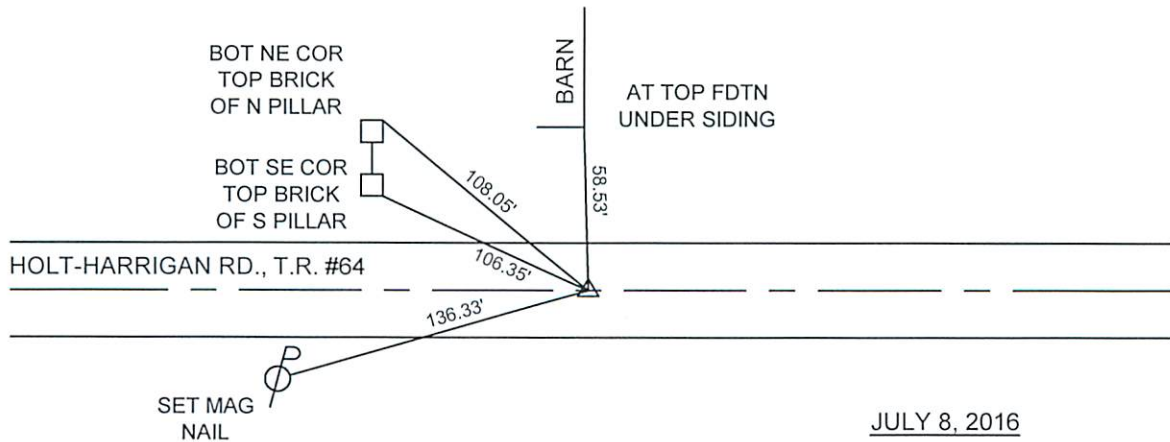
MONUMENT TYPE: FD HARDHEAD STONE
 ON SURFACE - BELOW: 1.00'
 LEFT - CL PAV'T - RIGHT: 2.10'

11" x 9" OVAL SHAPED STONE. USED HIGH POINT
 ON CENTER OF STONE.



MISC. INFORMATION

FD RR SPIKE 0.41' BELOW SURFACE, TIED W/
 X-TIES AND DUG FOR STONE. RR SPIKE WAS
 ONLINE NORTH AND SOUTH AND 0.29' EAST OF
 POINT USED ON STONE.



JULY 8, 2016

SET 1" SQUARE IRON PIN
 IN MONUMENT BOX OVER
 STONE