

OTTAWA COUNTY ENGINEERS OFFICE

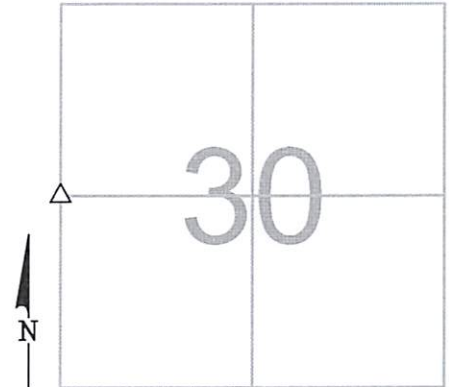
REFERENCE NO. 30-7-13-D
 WEST QUARTER POST SECTION
 30 CLAY TWP.
 SHEET 1 OF 1.

ROUTE: C-2 FOSTORIA RD.
 TOWNSHIP: CLAY
 SECTION: 30
 T 7 NR 13 E.

PERSONNEL:
 M. WITTMAN, P.S.
 J. HAYES - BEC
 M. POMMERANZ - BEC

NORTHING:
 EASTING:
 DATUM:

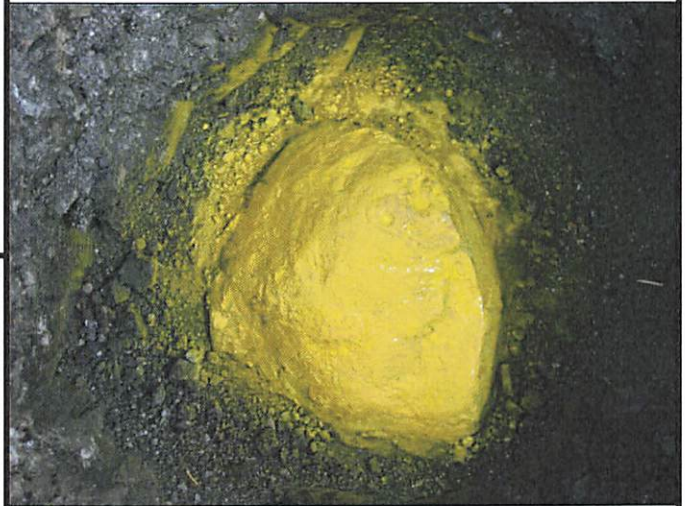
DATE / WEATHER / TEMP:
 JULY 7, 2005
 SUNNY
 73° F



MONUMENT INFORMATION

MONUMENT TYPE: FD STONE
 ON SURFACE - BELOW: 1.12'
 LEFT - CL PAV'T - RIGHT: 6'
 RECTANGULAR STONE: 8" E-W x 9" N-S

 SET DRILL HOLE ON HIGH POINT OF STONE



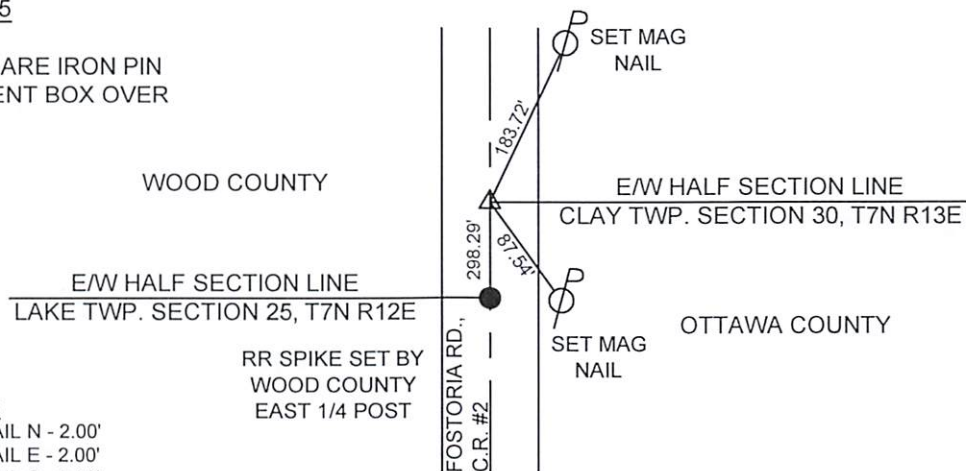
MISC. INFORMATION

POINT WAS LOCATED PER SURVEY BY C.E. DEWITT. IRON PIN IS 1.49' WEST OF COUNTY LINE.

THIS IS A CLOSING CORNER

JULY 7, 2005

SET 1" SQUARE IRON PIN
 IN MONUMENT BOX OVER
 STONE



SHORT TIES
 SET MAG NAIL N - 2.00'
 SET MAG NAIL E - 2.00'
 SET MAG NAIL S - 2.00'
 SET MAG NAIL W - 2.00'