

OTTAWA COUNTY ENGINEERS OFFICE

REFERENCE NO. 3-6-13-H
 SOUTH QUARTER POST SEC. 3
 CLAY TWP.
 SHEET 1 OF 1.

ROUTE: T-4 CAMPER RD.

TOWNSHIP: CLAY

SECTION: 3

T 6 NR 13 E.

PERSONNEL:

M. WITTMAN, P.S.
 J. ALLEN

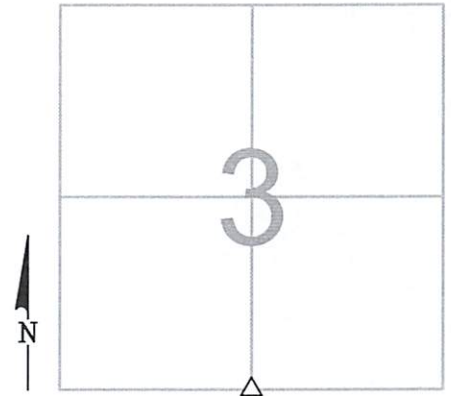
NORTHING:

EASTING:

DATUM:

DATE / WEATHER / TEMP:

JULY 30, 2020
 OVERCAST - NE
 78° F



MONUMENT INFORMATION

MONUMENT TYPE: FD. LIMESTONE
 ON SURFACE - BELOW: 1.28'
LEFT - CL PAV'T - RIGHT: 6.85'

 7" x 4 1/2" LIMESTONE W/ DRILL HOLE



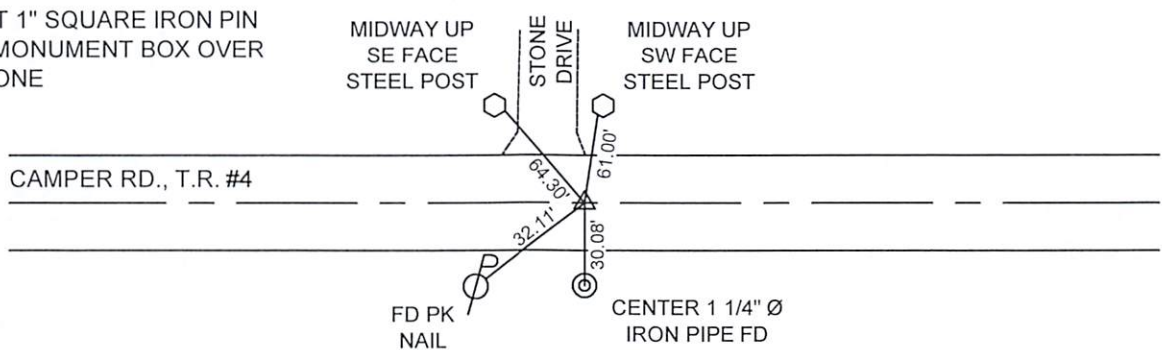
MISC. INFORMATION

JULY 30, 2020

SET 1" SQUARE IRON PIN
 IN MONUMENT BOX OVER
 STONE

MIDWAY UP
 SE FACE
 STEEL POST

MIDWAY UP
 SW FACE
 STEEL POST



FD PK
 NAIL

CENTER 1 1/4" Ø
 IRON PIPE FD