

OTTAWA COUNTY ENGINEERS OFFICE

REFERENCE NO. 29-7-13-F
 EAST QUARTER POST SEC. 29
 CLAY TWP.
 SHEET 1 OF 1.

PERSONNEL:
 M. WITTMAN, P.S.
 J. ALLEN

DATE / WEATHER / TEMP:
 JUNE 29, 2016
 SUNNY
 69° F

ROUTE: T-53 REIMAN RD.

TOWNSHIP: CLAY

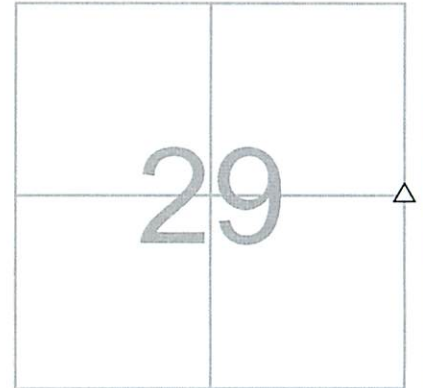
SECTION: 29

T 7 NR 13 E.

NORTHING:

EASTING:

DATUM:



MONUMENT INFORMATION

MONUMENT TYPE: 4" x 5" POINTED LIMESTONE
 ON SURFACE - BELOW: 1.55'
LEFT - CL PAV'T - RIGHT: 3.65'

 TRIANGULAR POINTED LIMESTONE.

 USED HIGH POINT ON STONE.



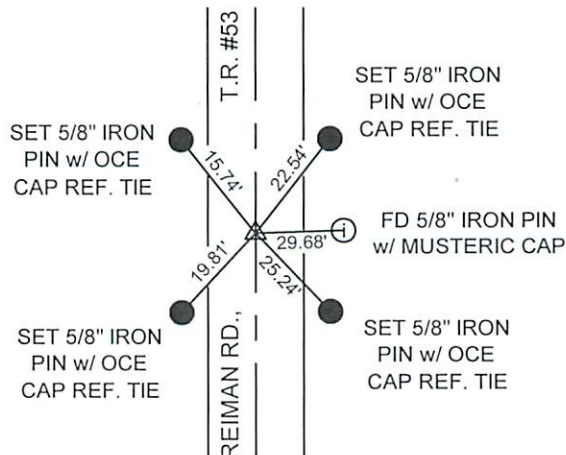
MISC. INFORMATION

FD 5/8" Ø x 30" IRON PIN ON SURFACE WITH TOP 1-3/4" BENT W-SW. TIED PIN AT POINT WHERE IT WAS STRAIGHT IN GROUND WITH X-TIES AND DUG FOR STONE. FD 1" Ø x 14" IRON PIN (POSSIBLY E. HOSTRUP 1941 PIN) 0.73' SOUTH AND 0.10' WEST OF POINT USED ON STONE. SURFACE PIN WAS ONLINE NORTH AND SOUTH AND 0.15' WEST OF POINT USED ON STONE.



JUNE 29, 2016

SET 1" SQUARE IRON PIN IN MONUMENT BOX OVER STONE



** ALL TIE DISTANCES ARE PLUMB