

# OTTAWA COUNTY ENGINEERS OFFICE

REFERENCE NO. 28-7-13-D  
 WEST QUARTER POST SEC. 28  
 CLAY TWP.  
 SHEET 1 OF 1.

ROUTE: T-53 REIMAN RD.

TOWNSHIP: CLAY

SECTION: 28

T 7 NR 13 E.

PERSONNEL:  
 M. WITTMAN, P.S.  
 J. ALLEN

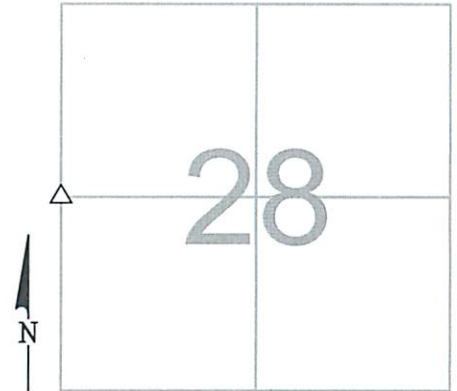
NORTHING:

EASTING:

DATE / WEATHER / TEMP:

JUNE 29, 2016  
 SUNNY  
 69° F

DATUM:



### MONUMENT INFORMATION

MONUMENT TYPE: 4" x 5" POINTED LIMESTONE  
 ON SURFACE - BELOW: 1.55'  
LEFT - CL PAV'T - RIGHT: 3.65'  
  
 TRIANGULAR POINTED LIMESTONE.  
  
 USED HIGH POINT ON STONE.



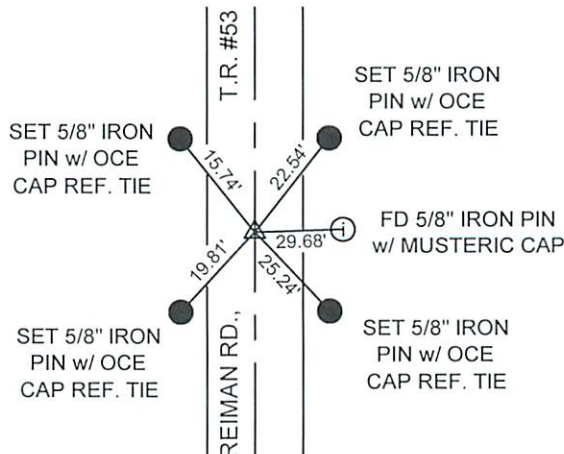
### MISC. INFORMATION

FD 5/8" Ø x 30" IRON PIN ON SURFACE WITH TOP 1-3/4" BENT W-SW. TIED PIN AT POINT WHERE IT WAS STRAIGHT IN GROUND WITH X-TIES AND DUG FOR STONE. FD 1" Ø x 14" IRON PIN (POSSIBLY E. HOSTRUP 1941 PIN) 0.73' SOUTH AND 0.10' WEST OF POINT USED ON STONE. SURFACE PIN WAS ONLINE NORTH AND SOUTH AND 0.15' WEST OF POINT USED ON STONE.



JUNE 29, 2016

SET 1" SQUARE IRON PIN IN MONUMENT BOX OVER STONE



SET 5/8" IRON PIN w/ OCE CAP REF. TIE

\*\* ALL TIE DISTANCES ARE PLUMB

FD 5/8" IRON PIN w/ MUSTERIC CAP

SET 5/8" IRON PIN w/ OCE CAP REF. TIE

SET 5/8" IRON PIN w/ OCE CAP REF. TIE

SET 5/8" IRON PIN w/ OCE CAP REF. TIE