

# OTTAWA COUNTY ENGINEERS OFFICE

REFERENCE NO. 27-7-13-A  
NW CORNER SECTION 27  
CLAY TWP.  
SHEET 1 OF 1.

PERSONNEL:  
M. WITTMAN, P.S.  
J. ALLEN

DATE / WEATHER / TEMP:  
OCTOBER 16, 2008  
OVERCAST N  
57° F

ROUTE: C-23 GENOA-CLAY CENTER RD.  
@ T-65 HELLWIG RD.

TOWNSHIP: CLAY

SECTION: 27

T 7 N R 13 E.

NORTHING:

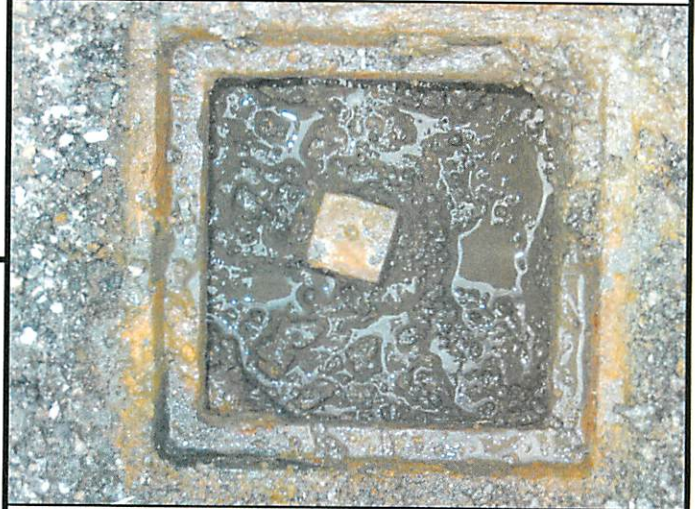
EASTING:

DATUM:



## MONUMENT INFORMATION

MONUMENT TYPE: FD. 1" SQUARE IRON PIN W/  
DRILL HOLE  
ON SURFACE - BELOW: 0.63'  
LEFT - CL PAV'T - RIGHT: 0.65'



## MISC. INFORMATION

