

OTTAWA COUNTY ENGINEERS OFFICE

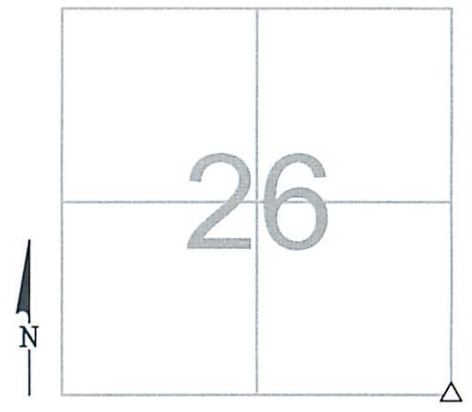
REFERENCE NO. 26-7-13-1
 SE CORNER POST SEC. 26
 CLAY TWP.
SHEET 1 OF 1.

ROUTE: T-214 OPFER-LENTZ RD.
 @ T-40 HOLTS-EAST RD.

TOWNSHIP: CLAY
SECTION: 26
T 7 **NR** 13 **E.**

PERSONNEL:
 M. WITTMAN, P.S.
 J. ALLEN
 J. TIMMONS

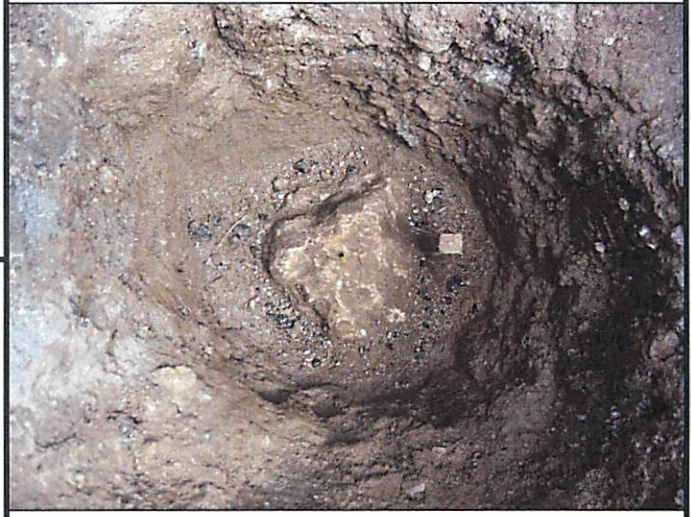
NORTHING:
EASTING:
DATUM:



DATE / WEATHER / TEMP:
 JULY 7, 2016
 SUNNY
 86° F - HUMID

MONUMENT INFORMATION

MONUMENT TYPE: FD 7-1/2" x 8-1/2" LIMESTONE
 ON SURFACE - BELOW: 1.96'
LEFT - CL PAV'T - RIGHT: 5.40' (OPFER-LENTZ RD.)
LEFT - CL PAV'T - RIGHT: 3.50' (HOLTS-EAST RD.)
 FD DRILL HOLE IN STONE, USED DRILL HOLE.



MISC. INFORMATION

FD RR SPIKE 0.23' BELOW SURFACE, TIED W/ X-TIES
 AND DUG FOR STONE. FD 1" SQUARE WOOD HUB
 ON EAST SIDE OF STONE.
 RR SPIKE WAS 0.08' SOUTH AND 0.12' EAST OF
 DRILL HOLE IN STONE.

JULY 7, 2016

SET 1" SQUARE IRON PIN
 IN MONUMENT BOX OVER
 STONE

