

OTTAWA COUNTY ENGINEERS OFFICE

REFERENCE NO. 25-7-13-H
SOUTH QUARTER POST SEC. 25
CLAY TWP.
SHEET 1 OF 1.

PERSONNEL:
M. WITTMAN, P.S.
J. ALLEN

DATE / WEATHER / TEMP:
OCTOBER 23, 2008
SUNNY SE
52° F

ROUTE: T-40 HOLTS - EAST RD.

TOWNSHIP: CLAY

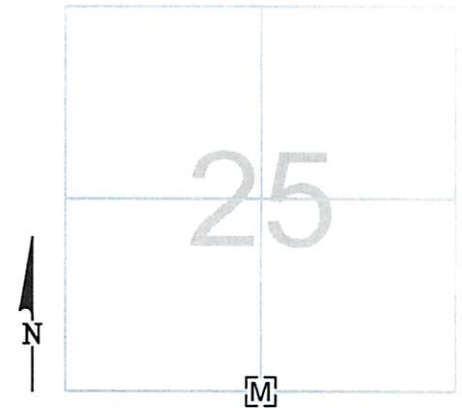
SECTION: 25

T 7 NR 13 E.

NORTHING:

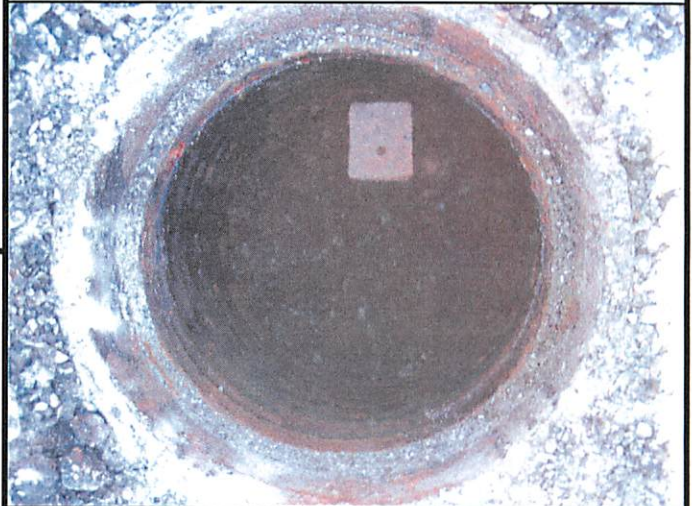
EASTING:

DATUM:



MONUMENT INFORMATION

MONUMENT TYPE: FD 1" SQ. IRON PIN IN WELL
CASING
ON SURFACE - BELOW: 0.10'
LEFT - CL PAV'T - RIGHT: 5.0'



MISC. INFORMATION

