

OTTAWA COUNTY ENGINEERS OFFICE

REFERENCE NO. 25-7-13-F
EAST QUARTER POST SEC. 25
CLAY TWP.
SHEET 1 OF 1.

ROUTE: C-213 NISSEN RD.
@ T-82 ZWICKER RD.

TOWNSHIP: CLAY

SECTION: 25

T 7 NR 13 E.

PERSONNEL:
M. WITTMAN, P.S.
J. ALLEN

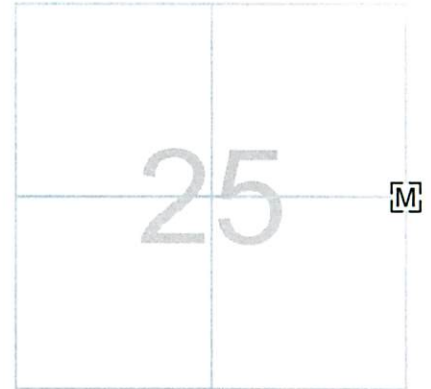
NORTHING:

EASTING:

DATE / WEATHER / TEMP:

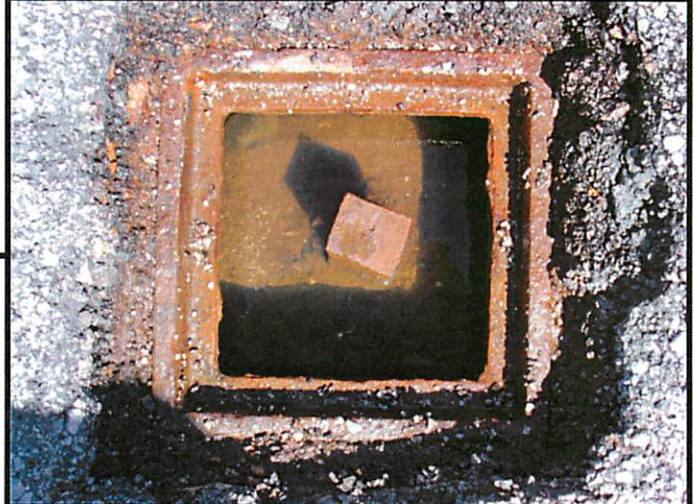
APRIL 15, 2008
SUNNY S
54° F

DATUM:



MONUMENT INFORMATION

MONUMENT TYPE: FD. 1" X 1½" IRON PIN W/
DRILL HOLE IN MONUMENT BOX
ON SURFACE - BELOW: 0.25'
LEFT - CL PAV'T - RIGHT: 1.0'



MISC. INFORMATION

