

OTTAWA COUNTY ENGINEERS OFFICE

REFERENCE NO. 25-7-13-B
NORTH QUARTER POST SEC. 25
CLAY TWP.
SHEET 1 OF 1.

ROUTE: T-65 HELLWIG RD.
TOWNSHIP: CLAY
SECTION: 25
T 7 NR 13 E.

PERSONNEL:
M. WITTMAN, P.S.
J. ALLEN
K. BECK

NORTHING:
EASTING:
DATUM:

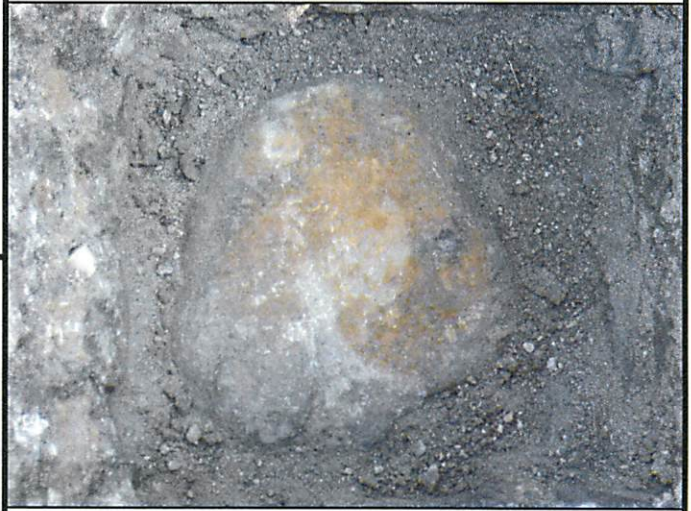
DATE / WEATHER / TEMP:
JULY 22, 2010
SUNNY
78° F



MONUMENT INFORMATION

MONUMENT TYPE: FD. 14"x12" FLAT HARDHEAD
STONE
ON SURFACE - BELOW: 1.37'
LEFT - CL PAV'T - RIGHT: 2.00'

USED CENTER OF STONE



MISC. INFORMATION

FD. 5/8" Ø IRON PIN AT SURFACE. TIED WITH X-TIES
AND DUG FOR STONE. IRON PIN WAS 0.13' E AND
0.10' N OF CENTER OF STONE.

JULY 22, 2010

SET 1" SQUARE IRON PIN
IN MONUMENT BOX OVER
STONE

