

OTTAWA COUNTY ENGINEERS OFFICE

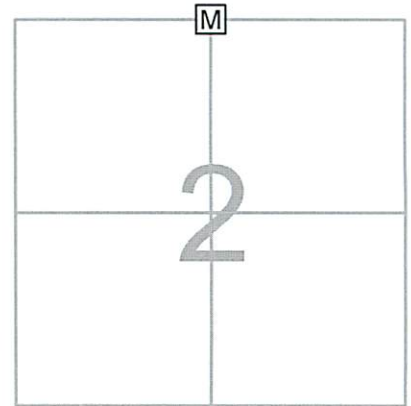
REFERENCE NO. 2-6-13-B
 NORTH QUARTER POST SEC. 2
 CLAY TWP.
SHEET 1 OF 1.

ROUTE: STATE ROUTE #163

TOWNSHIP: CLAY

SECTION: 2

T 6 **NR** 13 **E.**



PERSONNEL:

M. WITTMAN, P.S.
 J. ALLEN
 S. CODER, P.S. - ODOT
 J. RHODES - ODOT
 J. LAU - ODOT

NORTHING:

EASTING:

DATE / WEATHER / TEMP:

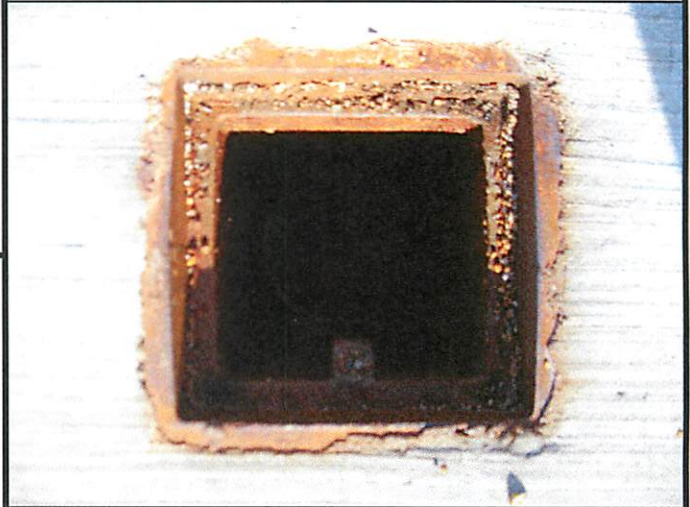
APRIL 29, 2013
 OVERCAST - SW
 68° F

DATUM:

MONUMENT INFORMATION

MONUMENT TYPE: SET 1" Ø IRON PIN IN MON BOX
ON SURFACE - BELOW:
 LEFT - CL PAV'T - RIGHT:

8-28-13:
 SET 1" Ø X 36" LONG IRON PIN IN FLOODED MASONRY
 SAND IN 6" Ø PVC IN MONUMENT BOX WITH ODOT AND
 SHELLY CO.

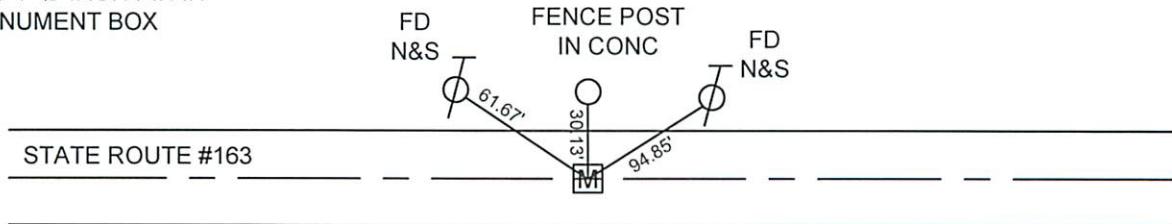


MISC. INFORMATION

FD NAIL AND SHINER ON SURFACE, TIED W/ X-TIES AND DUG FOR
 TILE PER RECORD. FD NAIL AND SHINER 0.10' BELOW SURFACE,
 NAIL AND SHINER WAS 0.06' W AND 0.07' N OF SURFACE NAIL. FD
 NAIL SHAFT 0.43' BELOW SURFACE, SHAFT WAS 0.02' W AND 0.09'
 N OF SURFACE NAIL. DUG THROUGH ORIGINAL CONCRETE ROAD
 INTO CLAY, DID NOT FIND TILE. ACCEPTED AND USED ODOT NAIL
 AND SHINER ON SURFACE TO SET IRON PIN IN MONUMENT BOX.

AUGUST 28, 2013

SET 1" Ø IRON PIN IN
 MONUMENT BOX



5/8" IP SET
 BY ODOT