

# OTTAWA COUNTY ENGINEERS OFFICE

REFERENCE NO. 19-7-13-C  
NE CORNER POST SECTION 19  
CLAY TWP.  
SHEET 1 OF 1.

ROUTE: C-66 MOLINE-MARTIN RD. @  
T- 54 BILLMAN RD.

TOWNSHIP: CLAY

SECTION: 19

T 7 NR 13 E.

NORTHING:

EASTING:

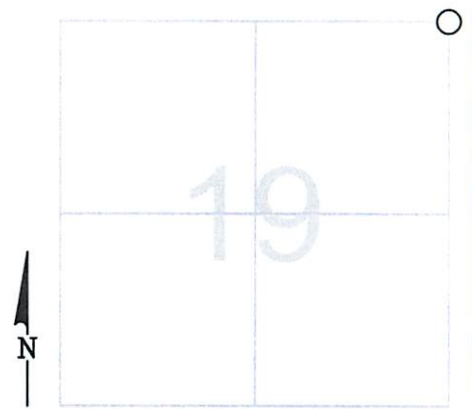
DATUM:

**PERSONNEL:**

M. WITTMAN, P.S.  
J. ALLEN  
E. KOCH, C. MILLER  
T. RAHM, K. LENKE - GARAGE

**DATE / WEATHER / TEMP:**

JULY 14, 2009  
SUNNY  
68° F

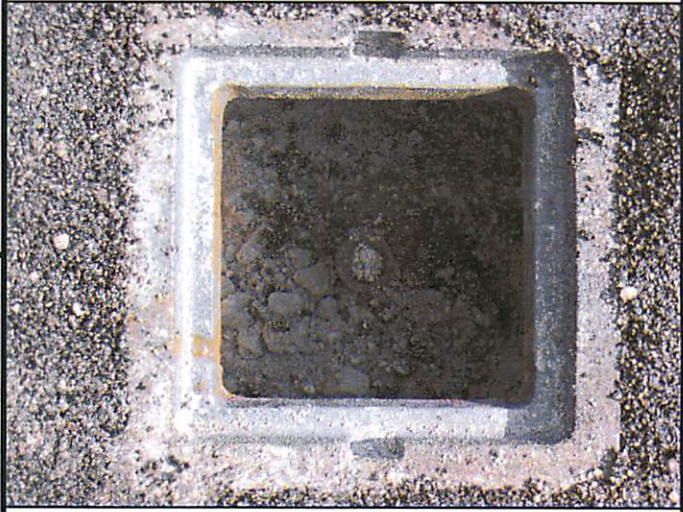


MONUMENT INFORMATION

MONUMENT TYPE: FD 1" Ø IRON PIN  
ON SURFACE - BELOW: 0.35'  
LEFT - CL PAV'T - RIGHT: 7.90'

PER COUNTY RECORDS

SET DRILL HOLE IN CENTER OF PIN.



MISC. INFORMATION

FD. PK NAIL 0.02' BELOW SURFACE - PK WAS  
OVER IRON PIN.

JULY 14, 2009

SET MONUMENT BOX OVER  
IRON PIN

