

# OTTAWA COUNTY ENGINEERS OFFICE

REFERENCE NO. 1-6-13-I  
SE CORNER POST SECTION 1  
CLAY TWP.  
SHEET 1 OF 1.

ROUTE: C-213 NISSEN RD.  
@ T-57 DENO RD.

TOWNSHIP: CLAY

SECTION: 1

T 6 NR 13 E.

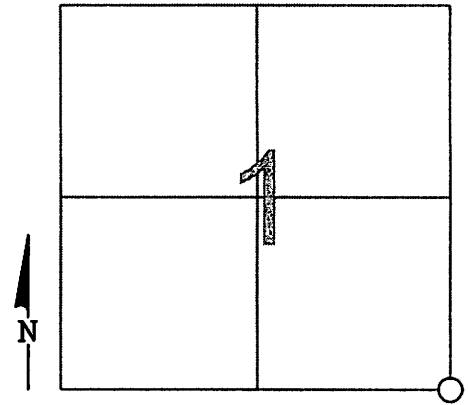
NORTHING:

EASTING:

DATUM:

PERSONNEL:  
M. WITTMAN, P.S.  
J.D. BARNES

DATE / WEATHER / TEMP:  
APRIL 13, 2007  
SUNNY N-NW  
55° F



## MONUMENT INFORMATION

MONUMENT TYPE: FD 3/4" IRON PIN  
ON SURFACE - BELOW: 0.67'  
LEFT - CL PAVT - RIGHT:

IRON PIN CALLED FOR IN NUMEROUS SURVEYS

## MISC. INFORMATION

PHOTO OF STONE NOT AVAILABLE

APRIL 13, 2007

SET IN MONUMENT BOX  
OVER PIN

