



OTTAWA COUNTY BENCHMARK DATA SHEET



CLA 54-3.0

Township	Section	Town	Range	Type of Monument
CLAY	19	T7N	R13E	3 1/4" Domed Bronze Disk in Concrete (OCE Spec. BM-1)
Set By	Shot By	Calculated	Calculated By	Published
OCE / OCHD	J. Allen	March 14, 2012	M. J. Wittman, P.S.	March 16, 2012

Location

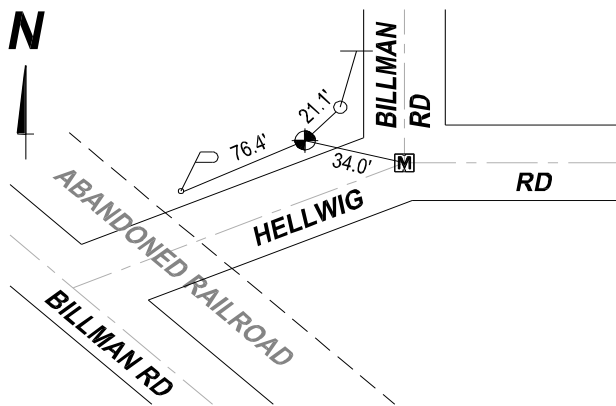
Northwest corner of the intersection of Billman Rd., T.R. #54 & Hellwig Rd., T.R. #65
(Northwest of the Billman Rd. diagonal at Southeast Corner Section 19, T7N R13E)

Vertical Control

Vertical Datum	Method	Elevation (U.S. Survey Feet)
NAVD 88	GPS	617.93

Horizontal Control

Horizontal Datum	Zone	Northing	Easting
NAD 83 CORS 96	OHIO NORTH 3401	685,531.500	1,722,904.085
Method	Latitude	Longitude	
GPS / CORPSCON	41° 32' 41.35509" N	83° 23' 49.91918" W	
Geoid	Scale Factor	Convergence	
GEOID 09	0.999973765	- 00° 35' 21.89641"	



NOTES:

1. Monument set: August 16, 2011
2. Data Collected: 1-31-12, 2-16-12, 3-9-12