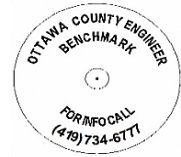




OTTAWA COUNTY BENCHMARK DATA SHEET



CLA 54-1.0

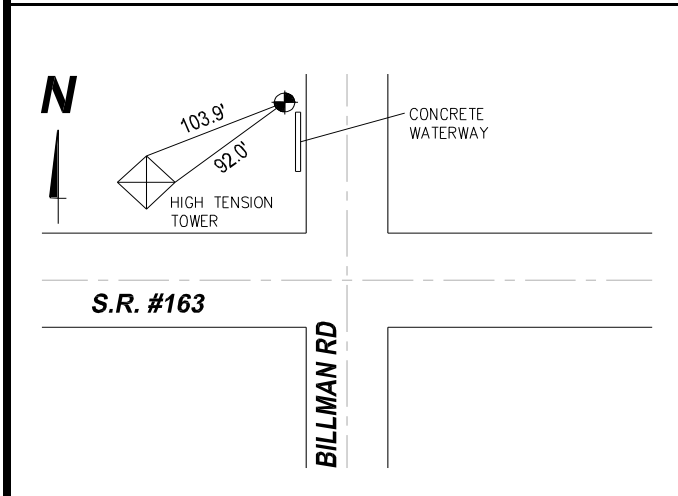
| | | | | |
|-----------------|----------------|-------------------|----------------------|--|
| Township | Section | Town | Range | Type of Monument |
| CLAY | 31 | T7N | R13E | 3 1/4" Domed Bronze Disk in Concrete (OCE Spec. BM-1) |
| Set By | Shot By | Calculated | Calculated By | Published |
| OCE / OCHD | J. Allen | March 8, 2012 | M. J. Wittman, P.S. | March 16, 2012 |

Location

West side of Billman Rd., T.R. #54, north of State Route #163

| Vertical Control | | |
|-----------------------|---------------|-------------------------------------|
| Vertical Datum | Method | Elevation (U.S. Survey Feet) |
| NAVD 88 | GPS | 622.71 |

| Horizontal Control | | | |
|-------------------------|---------------------|---------------------|----------------|
| Horizontal Datum | Zone | Northing | Easting |
| NAD 83 CORS 96 | OHIO NORTH 3401 | 674,829.794 | 1,722,713.948 |
| Method | Latitude | Longitude | |
| GPS / CORPSCON | 41° 30' 55.60857" N | 83° 23' 50.97130" W | |
| Geoid | Scale Factor | Convergence | |
| GEOID 09 | 0.999969628 | - 00° 35' 22.58760" | |



NOTES:

1. Monument set: August 16, 2011
2. Data Collected: 1-31-12, 2-7-12, 2-16-12