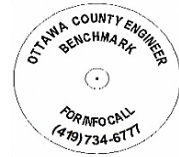




# OTTAWA COUNTY BENCHMARK DATA SHEET



## CLA 214-2.0

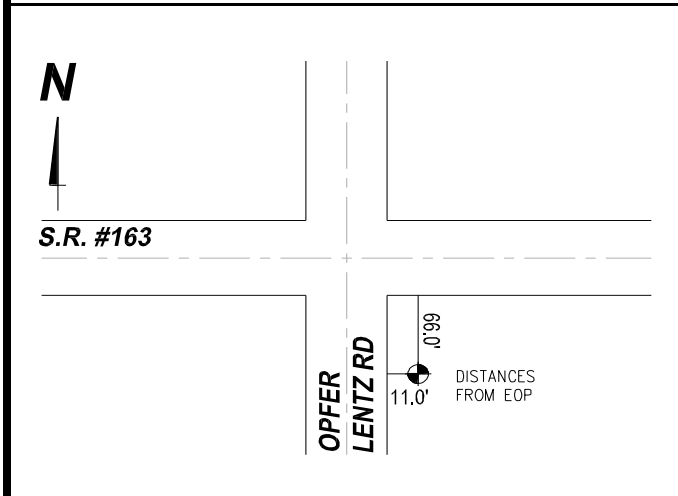
<b>Township</b>	<b>Section</b>	<b>Town</b>	<b>Range</b>	<b>Type of Monument</b>
CLAY	1	T6N	R13E	3 1/4" Domed Bronze Disk in Concrete (OCE Spec. BM-1)
<b>Set By</b>	<b>Shot By</b>	<b>Calculated</b>	<b>Calculated By</b>	<b>Published</b>
OCE / OCHD	J. Allen	March 14, 2012	M. J. Wittman, P.S.	March 16, 2012

**Location**

East side of Opfer-Lentz Rd., T.R. #214, south of State Route #163

Vertical Control		
<b>Vertical Datum</b>	<b>Method</b>	<b>Elevation (U.S. Survey Feet)</b>
NAVD 88	GPS	610.81

Horizontal Control			
<b>Horizontal Datum</b>	<b>Zone</b>	<b>Northing</b>	<b>Easting</b>
NAD 83 CORS 96	OHIO NORTH 3401	674,729.734	1,744,002.963
<b>Method</b>	<b>Latitude</b>	<b>Longitude</b>	
GPS / CORPSCON	41° 30' 56.69073" N	83° 19' 11.12225" W	
<b>Geoid</b>	<b>Scale Factor</b>	<b>Convergence</b>	
GEOID 09	0.999969669	- 00° 32' 18.74068"	



**NOTES:**

1. Monument set: August 16, 2011
2. Data Collected: 1-31-12, 2-17-12, 3-9-12