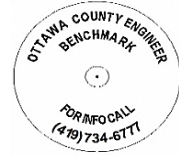


OTTAWA COUNTY BENCHMARK DATA SHEET



CLA 2-2.0

| Township | Section | Town | Range | Type of Monument |
|---------------|----------------|-------------------|----------------------|----------------------------------------------------------|
| CLAY | 31 | T7N | R13E | 3 1/4" Domed Bronze Disk in Concrete (OCE Spec. BM-1) |
| Set By | Shot By | Calculated | Calculated By | Published |
| OCE / OCHD | J. Allen | March 8, 2012 | M. J. Wittman, P.S. | March 16, 2012 |

Location

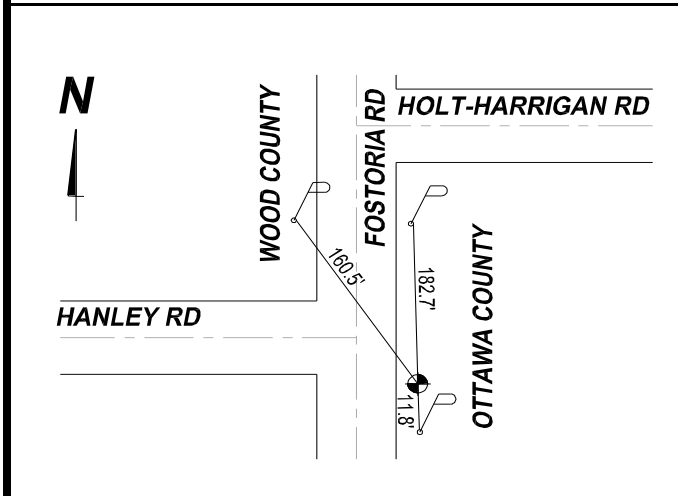
East side of Fostoria Rd., C.R. #2, south of Holt-Harrigan Rd., T.R. #64
(Across from intersection with Hanley Rd. - Wood County)

Vertical Control

| Vertical Datum | Method | Elevation (U.S. Survey Feet) |
|----------------|--------|------------------------------|
| NAVD 88 | GPS | 625.71 |

Horizontal Control

| Horizontal Datum | Zone | Northing | Easting |
|------------------|---------------------|---------------------|---------------|
| NAD 83 CORS 96 | OHIO NORTH 3401 | 679, 955.786 | 1,718,051.074 |
| Method | Latitude | Longitude | |
| GPS / CORPSCON | 41° 31' 45.77211" N | 83° 24' 52.96917" W | |
| Geoid | Scale Factor | Convergence | |
| GEOID 09 | 0.999971557 | - 00° 36' 03.31713" | |



NOTES:

1. Monument set: August 16, 2011
2. Data Collected: 1-31-12, 2-7-12, 2-16-12