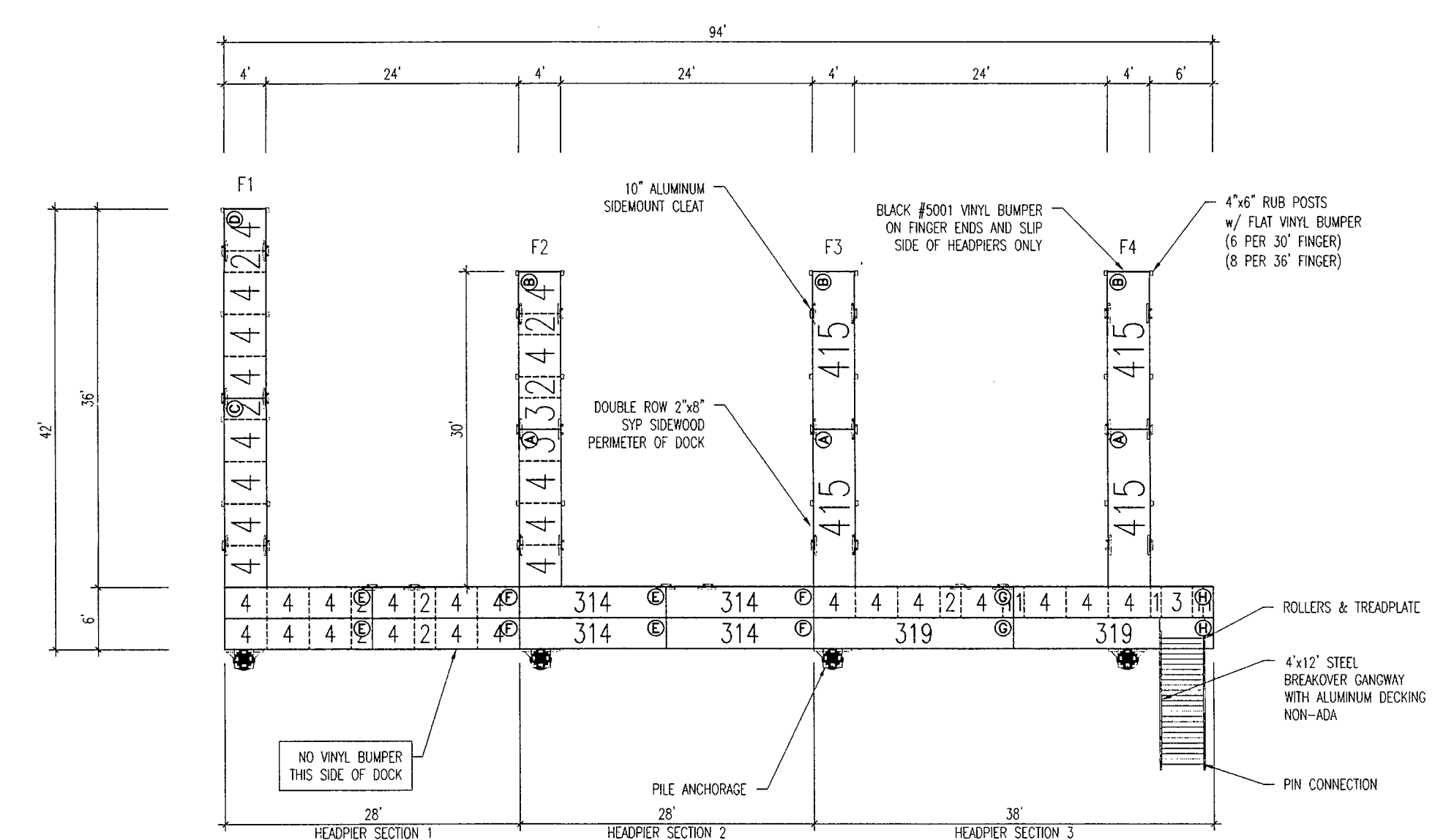
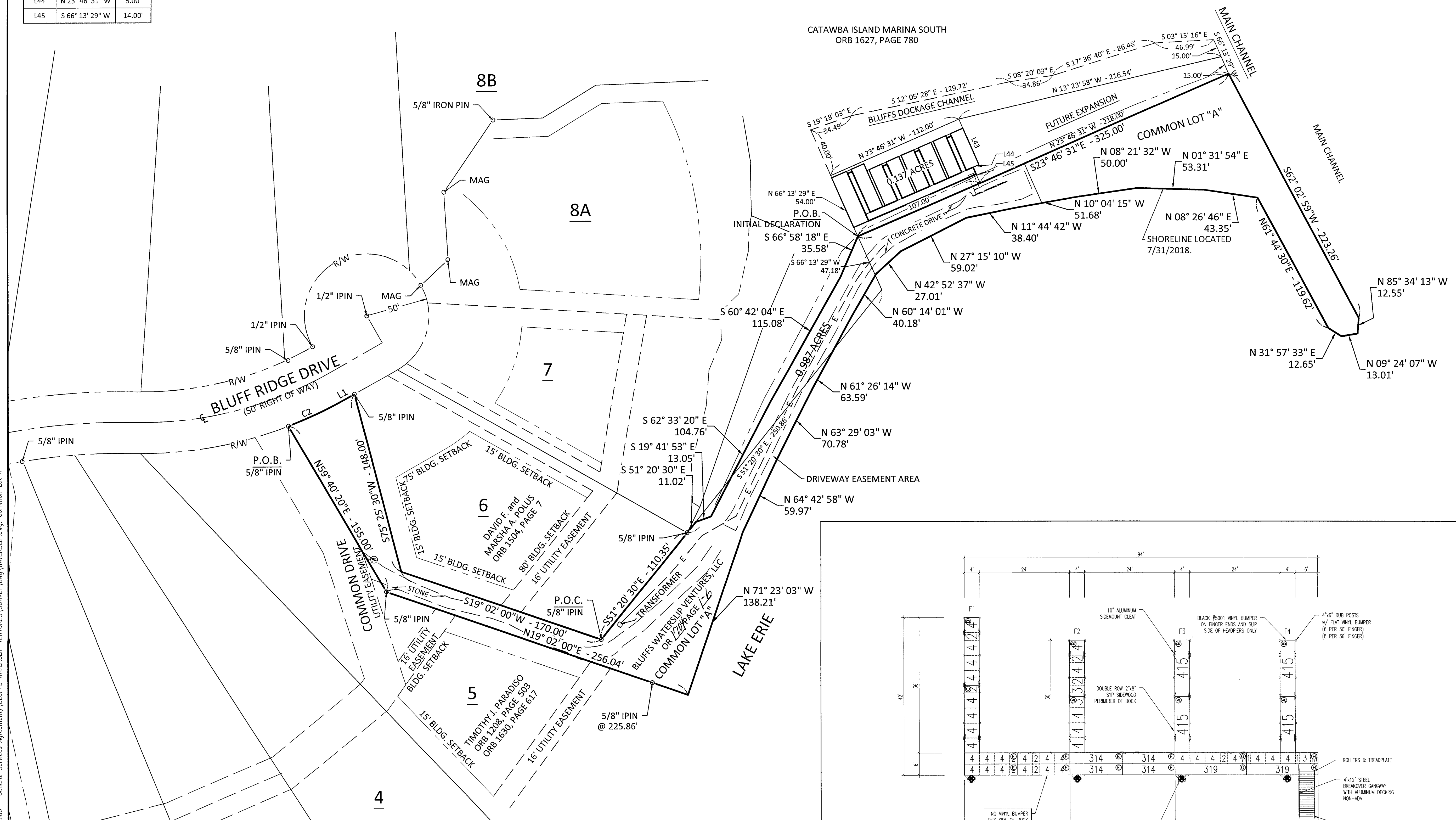
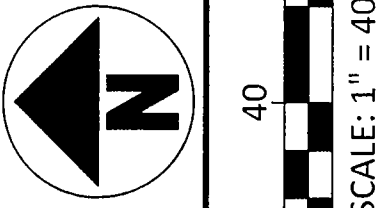


Line #	Direction	Length
L1	S 29° 41' 00" E	10.00'
L43	N 66° 13' 29" E	40.00'
L44	N 23° 46' 31" W	5.00'
L45	S 66° 13' 29" W	14.00'

Curve #	Radius	Delta	Chord Bearing	Chord Length	Length
C2	325.00'	8°38'18"	S 25° 21' 51" E	48.95'	49.00'



Document # 281876 Vol.68 PGS 22-24  
 Date Dec 17, 2018 Time 3:24p.m.  
 Fee \$ 201.60  
*Virginia M. Park, Recorder*  
 Virginia M. Park  
 Recorder, Ottawa County Ohio

APPROVED FOR  
 April 24, 2018  
 FABRICATION

FRAME PLAN

NO	REVISION	DATE
1	XXX	
2		
3		
4		
5		
6		
7		
8		
9		

DGL CONSULTING ENGINEERS, LLC  
 3455 BRADFORD BLVD, SUITE E  
 MAUMEE, OH 43537  
 PHONE: 419.535.1015  
 www.dgl-td.com

FOR:  
**THE BLUFFS WATERSLIP CONDOMINIUM**  
 COMMON LOT "A", THE BLUFFS SUBDIVISION, PLAT 1, BEING PART  
 OF GREAT LOT 4, SECTION 3, FIRELANDS SURVEY,  
 CATAWBA ISLAND TOWNSHIP, OTTAWA COUNTY, OHIO

**CONDOMINIUM PLAT**

FILE:	WATERSLIP
JOB NO.:	18101
DRAWN BY:	PJS
ISSUED:	11/29/2018

PLOTTED: Dec 10, 2018 - 3:33pm  
 DRAWING: M:\18101 (Catawba Island Club - General Services Agreement)\BLUFFS WATERSLIP VENTURES SURVEY.dwg Common Lot A

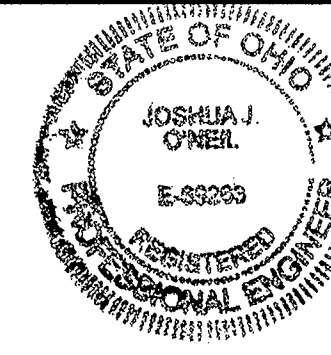
NO.	REVISION DESCRIPTION	BY	DATE	FILE NAME: 7743K.1
1				JOB # 18-1058 PLAN # 7743K
2				DATE: 4/24/18 SHEET SD2
3				CATAWBA ISLAND CLUB - BLUFFS
4				PORT CLINTON, OH

Line #	Direction	Length
L2	N 23° 46' 31" W	13.00'
L3	N 66° 13' 29" E	44.00'
L4	N 23° 46' 31" W	13.00'
L5	S 66° 13' 29" W	44.00'
L6	N 23° 46' 31" W	11.00'
L7	N 66° 13' 29" E	38.00'
L8	S 23° 46' 31" E	11.00'
L9	S 66° 13' 29" W	38.00'
L10	N 23° 46' 31" W	11.00'
L11	N 66° 13' 29" E	32.00'

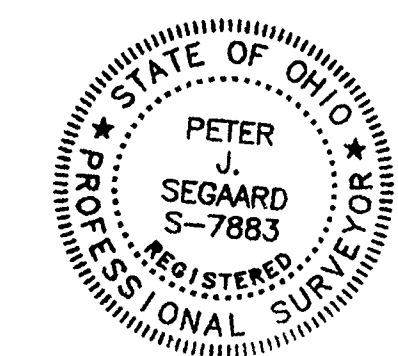
Line #	Direction	Length
L12	S 23° 46' 31" E	11.00'
L13	S 66° 13' 29" W	32.00'
L14	N 23° 46' 31" W	11.00'
L15	N 66° 13' 29" E	32.00'
L16	S 23° 46' 31" E	11.00'
L17	S 66° 13' 29" W	32.00'
L18	N 23° 46' 31" W	11.00'
L19	N 66° 13' 29" E	32.00'
L20	S 23° 46' 31" E	11.00'
L21	S 66° 13' 29" W	32.00'

Line #	Direction	Length
L22	N 23° 46' 31" W	11.00'
L23	N 66° 13' 29" E	32.00'
L24	S 23° 46' 31" E	11.00'
L25	S 66° 13' 29" W	32.00'
L26	N 23° 46' 31" W	11.00'
L27	N 66° 13' 29" E	32.00'
L28	S 23° 46' 31" E	11.00'
L29	S 66° 13' 29" W	32.00'
L30	N 23° 46' 31" W	11.00'
L31	N 66° 13' 29" E	32.00'

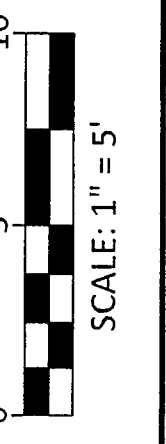
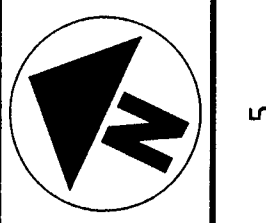
Line #	Direction	Length
L32	S 23° 46' 31" E	11.00'
L33	S 66° 13' 29" W	32.00'
L37	N 66° 13' 29" E	14.00'
L38	S 23° 46' 31" E	5.00'
L40	N 66° 13' 29" E	6.00'
L41	N 66° 13' 29" E	6.00'



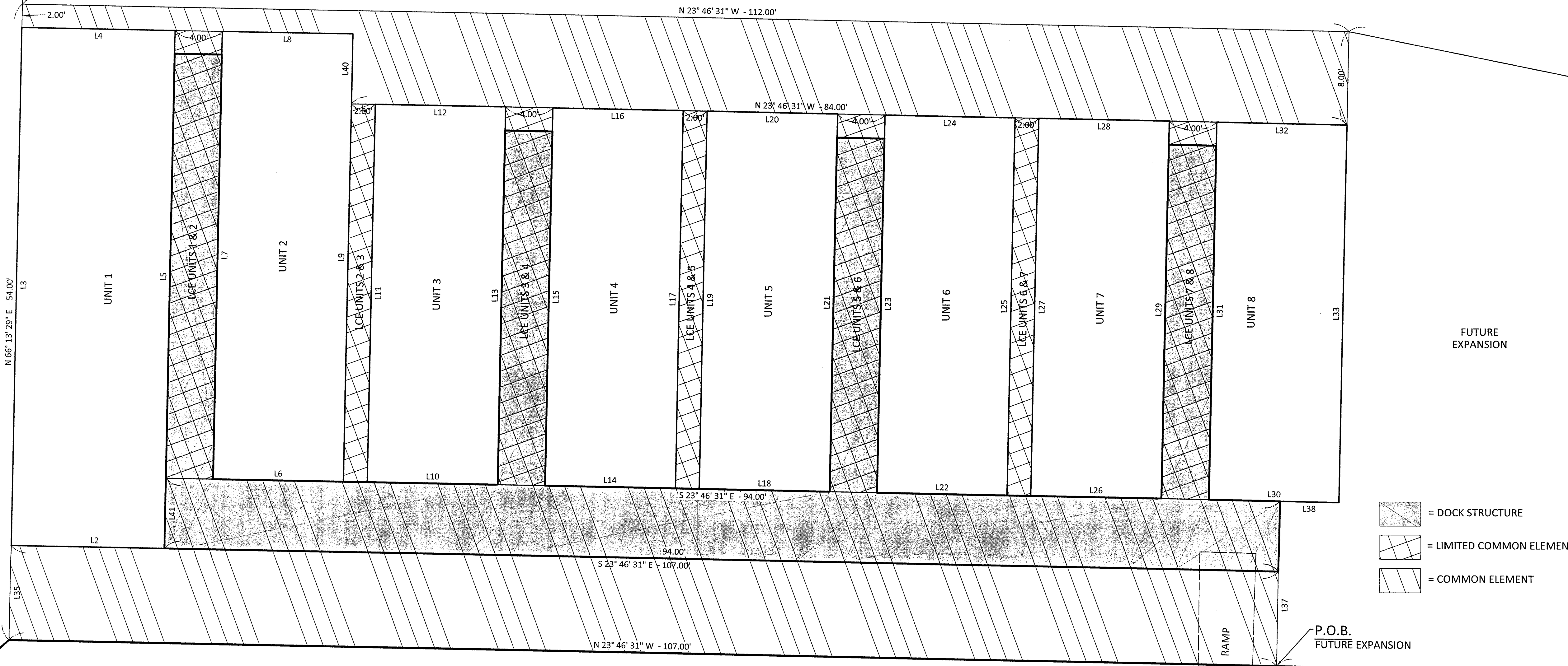
ENGINEER'S CERTIFICATION:  
I HEREBY DECLARE THAT THE DRAWING ACCURATELY SHOWS EACH DOCK AS BUILT TO THE BEST OF MY KNOWLEDGE AND BELIEF.  
*Joshua J. O'Neil* 11.29.2018  
DATE  
JOSHUA J. O'NEIL, P.E.  
OHIO PROFESSIONAL ENGINEER NO. 69263



SURVEYOR'S CERTIFICATION:  
I HEREBY DECLARE THAT THE DRAWING ACCURATELY REFLECTS THE LOCATION OF IMPROVEMENTS AND RECORDED EASEMENTS TO THE BEST OF MY KNOWLEDGE AND BELIEF.  
*Peter J. Seggaard* 11.29.2018  
DATE  
PETER J. SEGGAARD, P.S.  
OHIO PROFESSIONAL SURVEYOR NO. 7883



BLUFFS DOCKAGE CHANNEL



- = DOCK STRUCTURE
- = LIMITED COMMON ELEMENT
- = COMMON ELEMENT

FUTURE EXPANSION

P.O.B. FUTURE EXPANSION

SIDEWALK

CONCRETE DRIVE

COMMON LOT "A"

NO	REVISION	DATE
9		
8		
7		
6		
5		
4		
3		
2		
1	XXX	

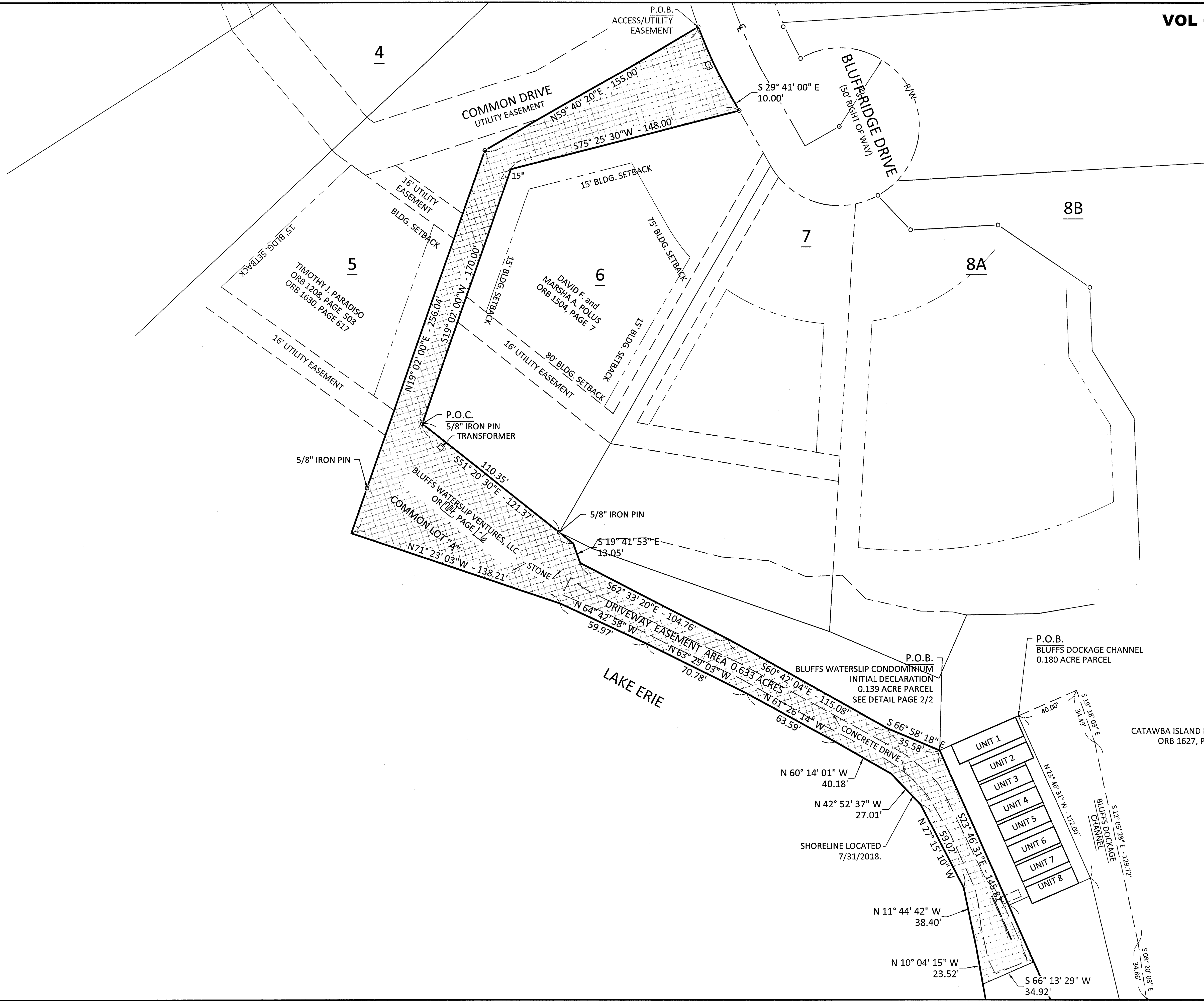
DGL CONSULTING ENGINEERS, LLC  
3455 BRIARFIELD BLVD, SUITE E  
MAUMEE, OH 43537  
PHONE: 419.535.1015  
www.dgl-ttd.com

FOR:  
**THE BLUFFS WATERSLIP CONDOMINIUM**  
PART OF COMMON LOT "A",  
THE BLUFFS SUBDIVISION, PLAT 1,  
AND PART OF GREAT LOT 4, SECTION 3, FIRELANDS SURVEY,  
CATAWBA ISLAND TOWNSHIP, OTTAWA COUNTY, OHIO

**CONDOMINIUM PLAT**

FILE:	WATERSLIP
JOB NO.:	18101
DRAWN BY:	PJS
ISSUED:	11/29/2018

PLOTTED: Nov 29, 2018 - 11:11am  
 DRAWING: M:\18101 (Columba Island Club - General Services Agreement)\BLUFFS WATERSLIP VENTURES\SURVEY\DWG\WATERSLIP.dwg - Unit Detail



NO	REVISION	DATE
1	XXX	
2		
3		
4		
5		
6		
7		
8		
9		

DGL CONSULTING ENGINEERS, LLC  
 3455 BRAEFIELD BLVD, SUITE E  
 MAUMEE, OH 43537  
 PHONE: 419.535.1015  
 www.dgl-ltd.com

**FOR:**  
 THE BLUFFS WATERSLIP CONDOMINIUM  
 PART OF COMMON LOT "A", THE BLUFFS SUBDIVISION, PLAT 1, and  
 PART OF GREAT LOT 4, SECTION 3, FIRELANDS SURVEY,  
 CATAWBA ISLAND TOWNSHIP, OTTAWA COUNTY, OHIO

**EASEMENT**

FILE: WATERSLIP  
 JOB NO.: 18101  
 DRAWN BY: PJS  
 ISSUED: 11/29/2018

PLOTTED: Dec 10, 2018 -- 3:35pm  
 DRAWING: M:\18101 (Catawba Island Club - General Services Agreement)\BLUFFS WATERSLIP VENTURES\SURVEY\Draw\WATERSLIP.dwg - ACCESS EASEMENT