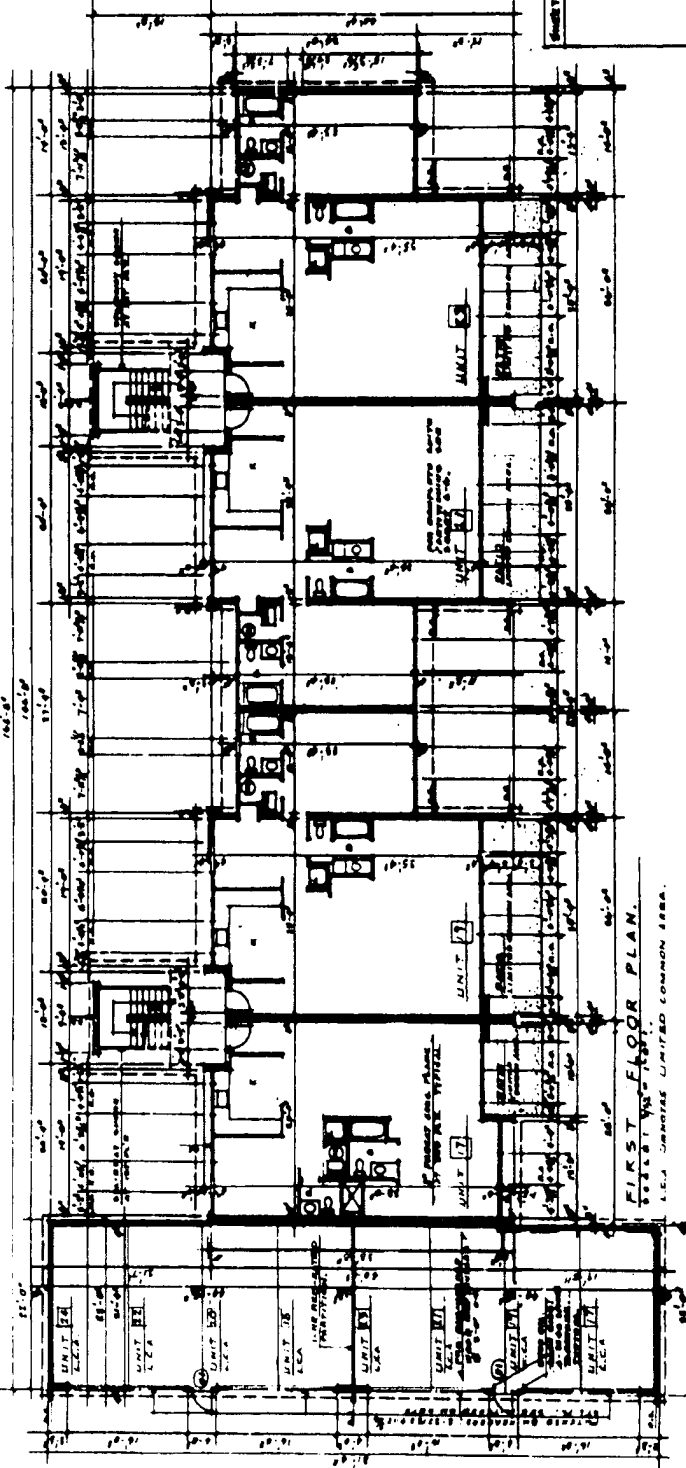
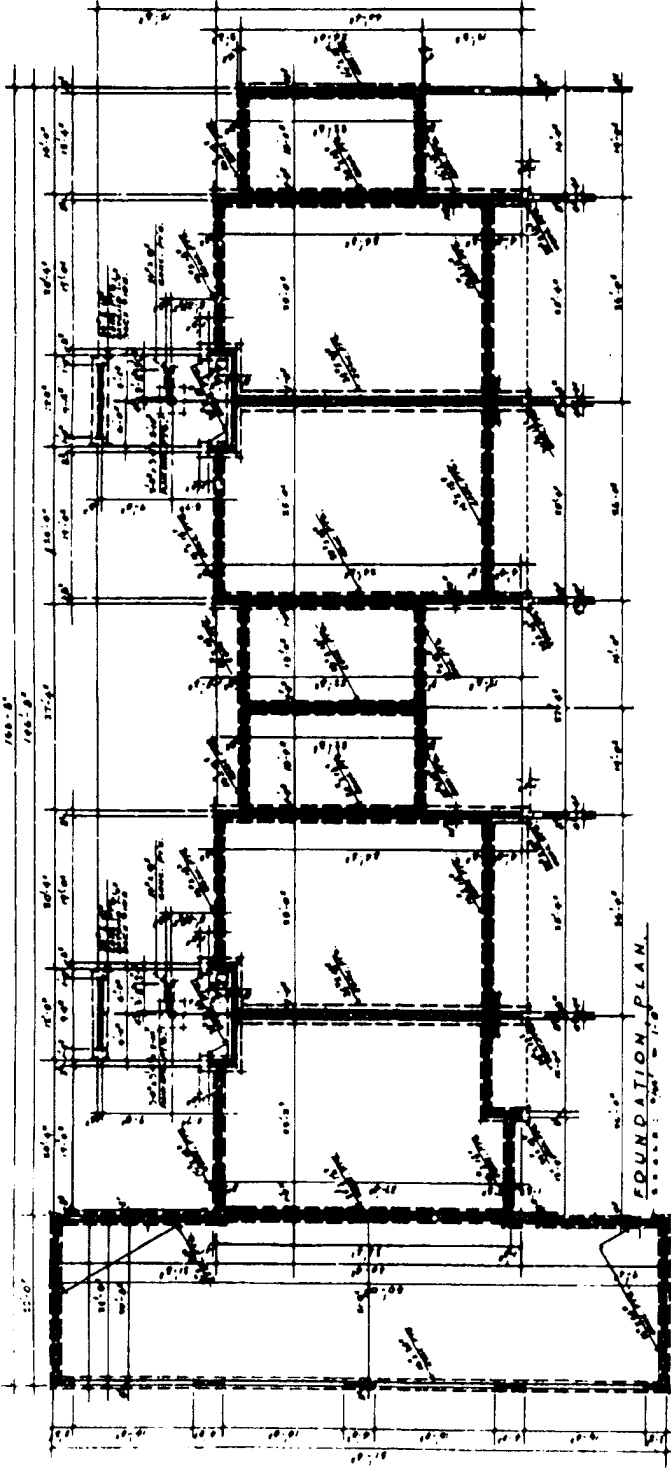


Printed for Matthew Anthony (45609) 2022-11-11 10:06:03

9A



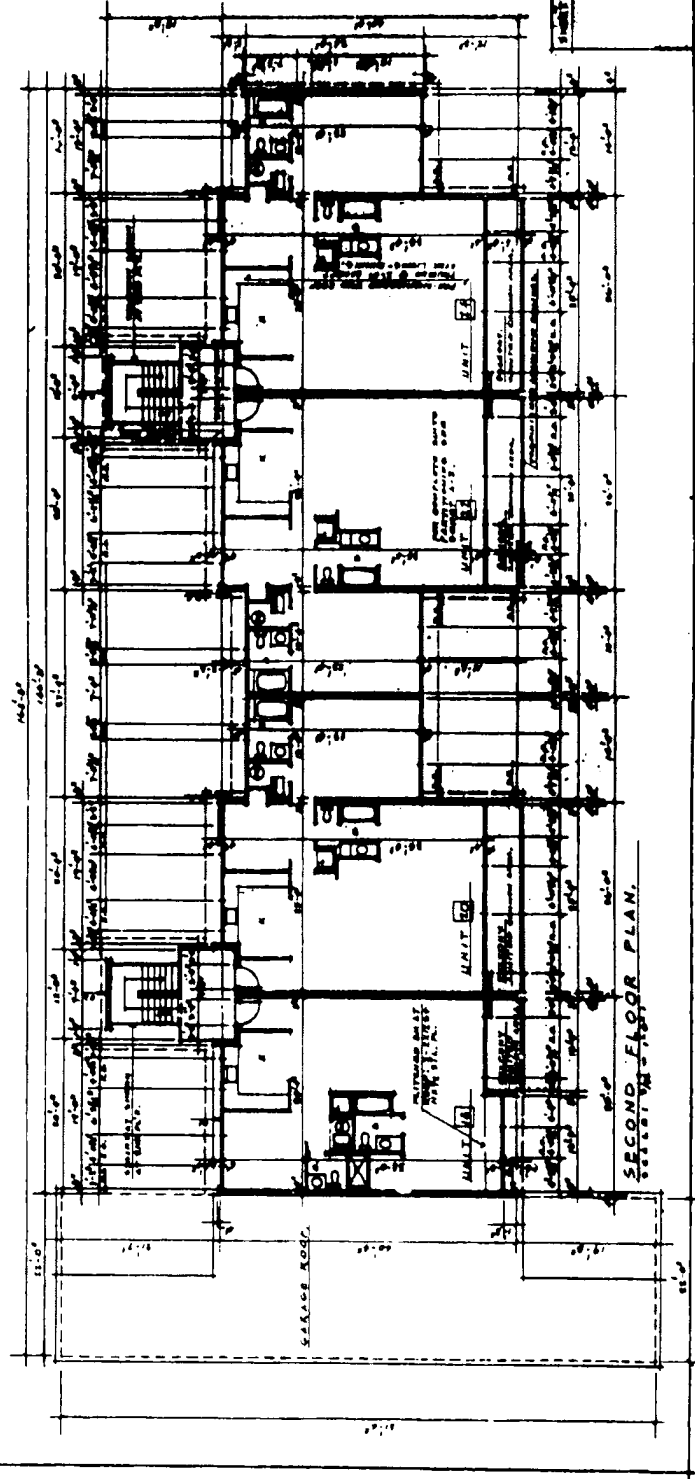
GARBER'S
 ARCHITECTURAL & ENGINEERING
 227 UNIVERSITY DRIVE, SUITE 201
 COLUMBUS, OHIO 43221-1000

33954
 Received Sept 22, 1987 2:31 PM
 Received Sept 23, 1987
 William R. Keenan 3rd 2540
 Vol 24 Pg 9A

REVISIONS	
SHEET NO.	102
PROJECT TITLE	PHASE 2A - FIRST FLOOR PLAN - Bldg. 102
PROJECT NO.	33954
DATE	JULY 9, 1987
DRAWN BY	AMT
CHECKED BY	
DATE	
PROJECT	SUN VALLEY CONDOMINIUM
PHASE	PHASE 2A - BUILDING 102
OWNER	WILLIAM R. KEENAN 3RD
ADDRESS	2540 W. 24th St., Columbus, Ohio 43221
SCALE	AS SHOWN



9B



ARCHITECT: CARBERS
 231 WEST 10TH STREET
 CLEVELAND, OH 44115
 (216) 421-1111

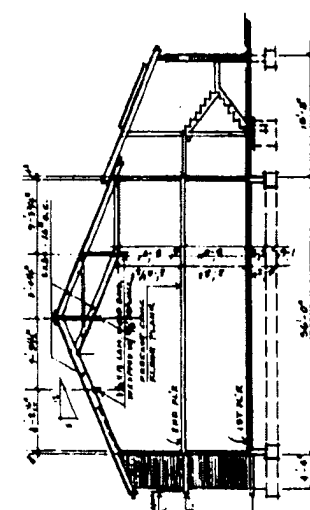
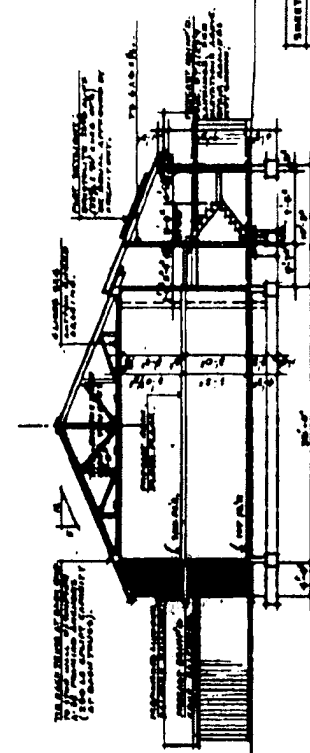
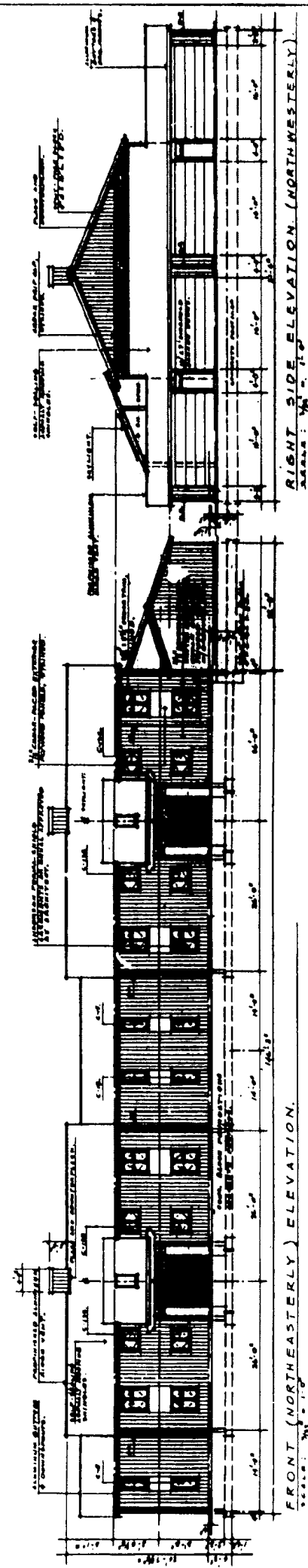
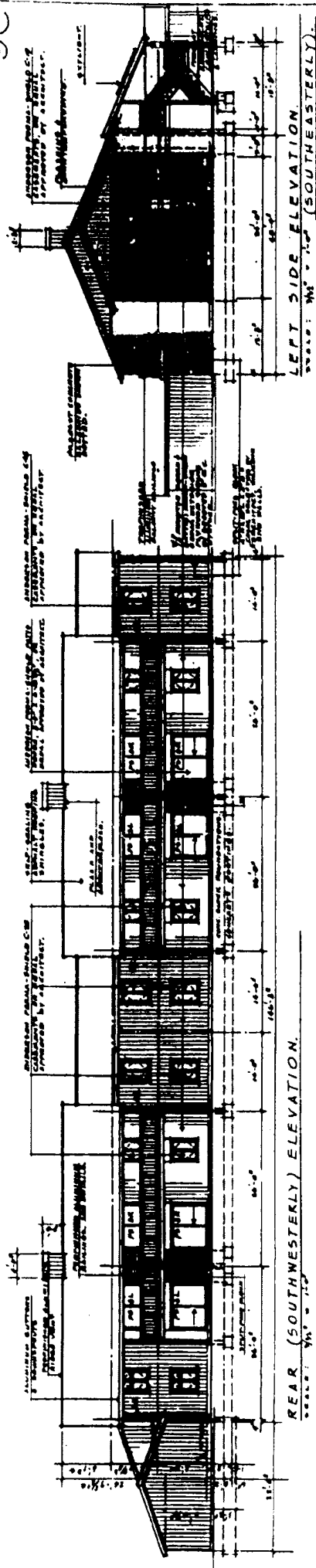
33954
 Revised April 22, 1987 2:30 PM
 Revised April 23, 1987
 William R. Kamm Jun 23, 80
 DWG 24 of 9-8

PROJECT TOTAL: 10 SHEETS
 SHEET NO. 9B

CARBERS ARCHITECTURE P.C.
 231 WEST 10TH STREET
 CLEVELAND, OH 44115
 (216) 421-1111

9B

9C



PREPARED BY
GARBER'S
227 UNIVERSITY AVE. CANTON, OH 44705
TELEPHONE 338-1111

33954
Revised Sept. 22, 1987 2:31 PM
Revised Sept. 23, 1987
William R. Kawan Dec. 23, 10
9C

SEAL

REGISTERED PROFESSIONAL ARCHITECT

WILLIAM R. KAWAN

11000 W. HILBERRY BL.

CANTON, OH 44705

REVISIONS

DATE

BY

NO. 1

NO. 2

NO. 3

NO. 4

NO. 5

NO. 6

NO. 7

NO. 8

NO. 9

NO. 10

NO. 11

NO. 12

NO. 13

NO. 14

NO. 15

NO. 16

NO. 17

NO. 18

NO. 19

NO. 20

NO. 21

NO. 22

NO. 23

NO. 24

NO. 25

NO. 26

NO. 27

NO. 28

NO. 29

NO. 30

NO. 31

NO. 32

NO. 33

NO. 34

NO. 35

NO. 36

NO. 37

NO. 38

NO. 39

NO. 40

NO. 41

NO. 42

NO. 43

NO. 44

NO. 45

NO. 46

NO. 47

NO. 48

NO. 49

NO. 50

NO. 51

NO. 52

NO. 53

NO. 54

NO. 55

NO. 56

NO. 57

NO. 58

NO. 59

NO. 60

NO. 61

NO. 62

NO. 63

NO. 64

NO. 65

NO. 66

NO. 67

NO. 68

NO. 69

NO. 70

NO. 71

NO. 72

NO. 73

NO. 74

NO. 75

NO. 76

NO. 77

NO. 78

NO. 79

NO. 80

NO. 81

NO. 82

NO. 83

NO. 84

NO. 85

NO. 86

NO. 87

NO. 88

NO. 89

NO. 90

NO. 91

NO. 92

NO. 93

NO. 94

NO. 95

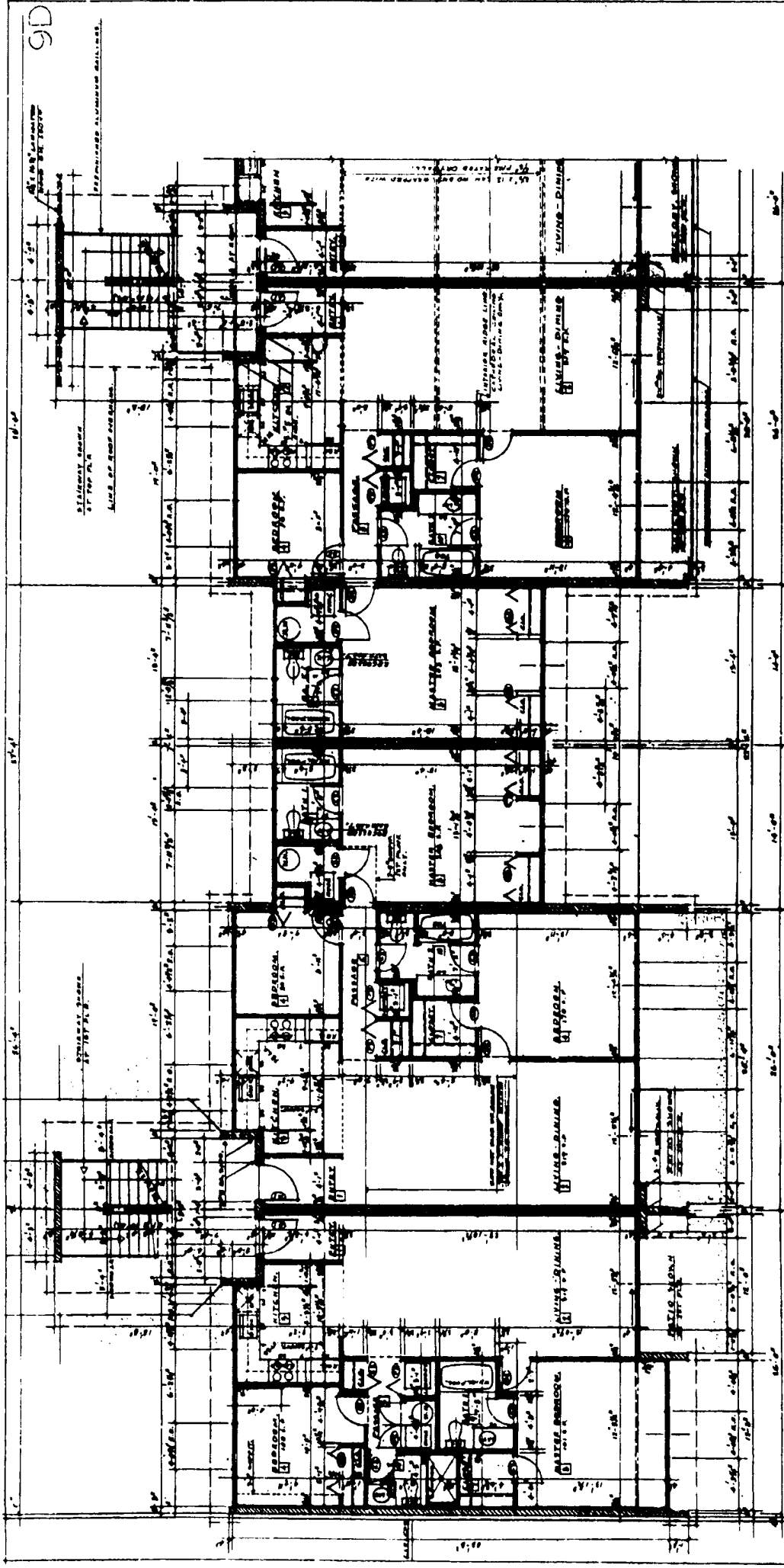
NO. 96

NO. 97

NO. 98

NO. 99

NO. 100



9D

2-BEDROOM UNIT.
(1ST FLOOR SHOWN).
UNIT 17 - 1ST FLOOR.
UNIT 18 - 2ND FLOOR.

3-BEDROOM UNIT.
(1ST FLOOR SHOWN).
UNIT 19 - 1ST FLOOR.
UNIT 20 - 2ND FLOOR.
UNIT 21 - 1ST FLOOR.
UNIT 22 - 2ND FLOOR.

3-BEDROOM UNIT (OPPOSITE HAND).
(2ND FLOOR SHOWN).
UNIT 21 - 1ST FLOOR.
UNIT 22 - 2ND FLOOR.

TYPICAL CONDOMINIUM PLANS
SCALE: 1/4" = 1'-0"

33954
Revised April 23, 1987 1:30 PM
Revised April 23, 1987
William R. Kover June 23, 89
W.R.K. 9-D

OWNER: VALLEY COMMUNITIES
PROJECT: VALLEY COMMUNITIES
DESIGNER: GARDNER'S
DATE: JUNE 23, 1989