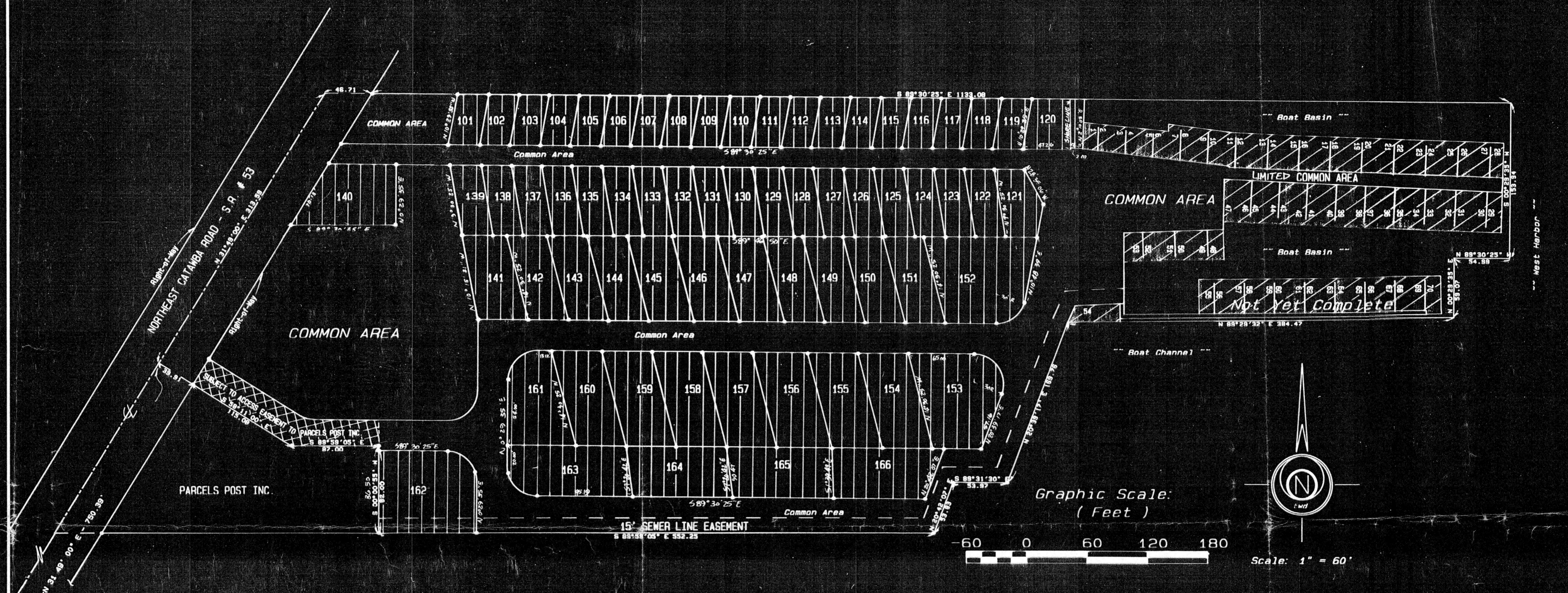





# Parcels Post Marina Condominium OVERALL PLOT PLAN



### Legend

-  Limited Common Area
-  Units
-  IRON PIN SET

The Drawings Accurately Show  
The Water Slips as Constructed.

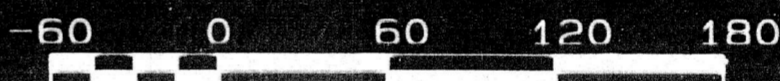
David A. Brunthorst, P.E., R.S.  
Professional Engineer #39610  
Registered Surveyor #6314  
9115 West Long Beach Road  
Oak Harbor, Ohio 43449

REVISED LAYOUT

SEAL

SEAL

Graphic Scale:  
( Feet )



Scale: 1" = 60'

### Legal Description:

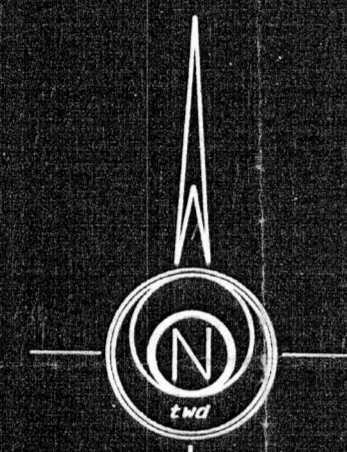
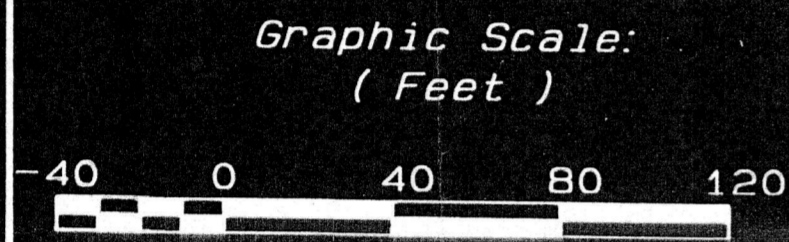
Known as and being a parcel of real estate in Section 3, Lot 2, Firelands Survey, Catawba Island Township, Ottawa County, Ohio and being more particularly described as follows:

Commencing at an iron pin marking the intersection of the centerline of State Route #53 and the South line of Section 3, Lot 2, Firelands Survey, Catawba Island Township, Ottawa County, Ohio; thence proceeding North 31 degrees 49 minutes East in the centerline of said State Route #53 a distance of 750.39 feet to the point and place of beginning of the parcel herein described; thence continuing North 31 degrees 49 minutes East in said State Route #53 centerline a distance of 313.59 feet to a point; thence proceeding South 89 degrees 30 minutes 25 seconds East a distance of 170.70 feet to a point; thence proceeding South 0 degrees 29 minutes 35 seconds West a distance of 153.94 feet to a point; thence North 89 degrees 30 minutes 25 seconds West a distance of 54.80 feet to a point; thence proceeding South 0 degrees 29 minutes 35 seconds West a distance of 59.07 feet to a point; thence proceeding South 89 degrees 29 minutes 32 seconds West a distance of 384.47 feet to a point; thence proceeding South 20 degrees 30 minutes 17 seconds East a distance of 169.76 feet to an iron pin; thence proceeding North 89 degrees 31 minutes 30 seconds West a distance of 53.97 feet to an iron pin; thence proceeding South 20 degrees 42 minutes 07 seconds West a distance of 33.83 feet to an iron pin; thence proceeding North 89 degrees 55 minutes 05 seconds West a distance of 552.25 feet to a point; thence proceeding North 0 degrees 00 minutes 55 seconds East a distance of 86.50 feet to a point; thence proceeding North 89 degrees 59 minutes 05 seconds West a distance of 87.00 feet to a point; thence proceeding North 58 degrees 11 minutes West a distance of 154.93 feet to the point and place of beginning. The above parcel encompasses 9.7610 acres but is subject to all legal highways and easements of record.

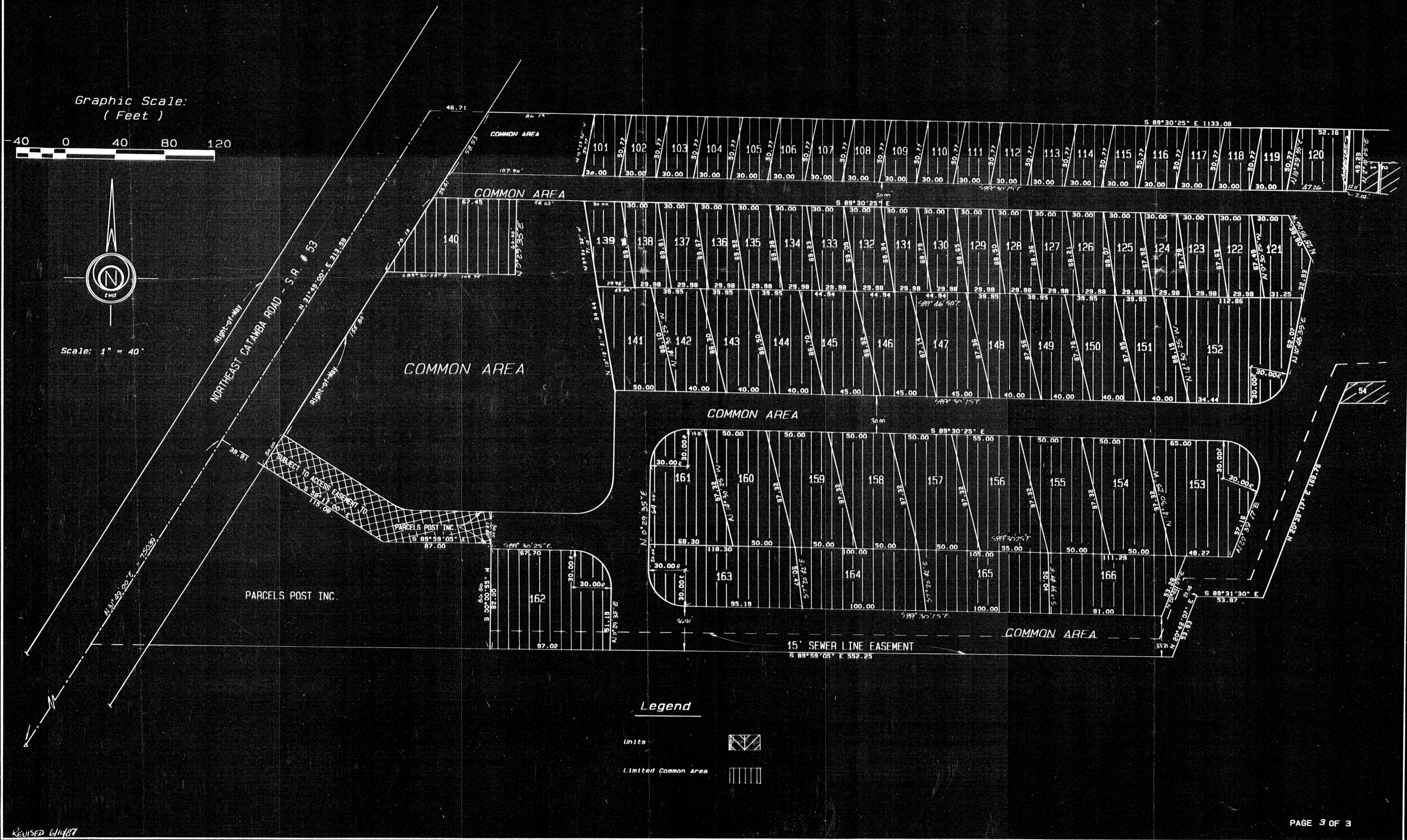
The above legal description was prepared by David A. Brunthorst, Registered Surveyor #6314, and is based on the assumption that the centerline of State Route #53 from its intersection with the South line of Section 3, Lot 2, Firelands Survey, Catawba Island Township, Ottawa County, Ohio, in a northerly direction, bears North 31 degrees 49 minutes 00 seconds East.



Parcels Post Marina Condominium  
 APPURTANENT LIMITED COMMON AREAS



Scale: 1" = 40'



Legend

- Units
- Limited Common Area

REVISED 6/14/87