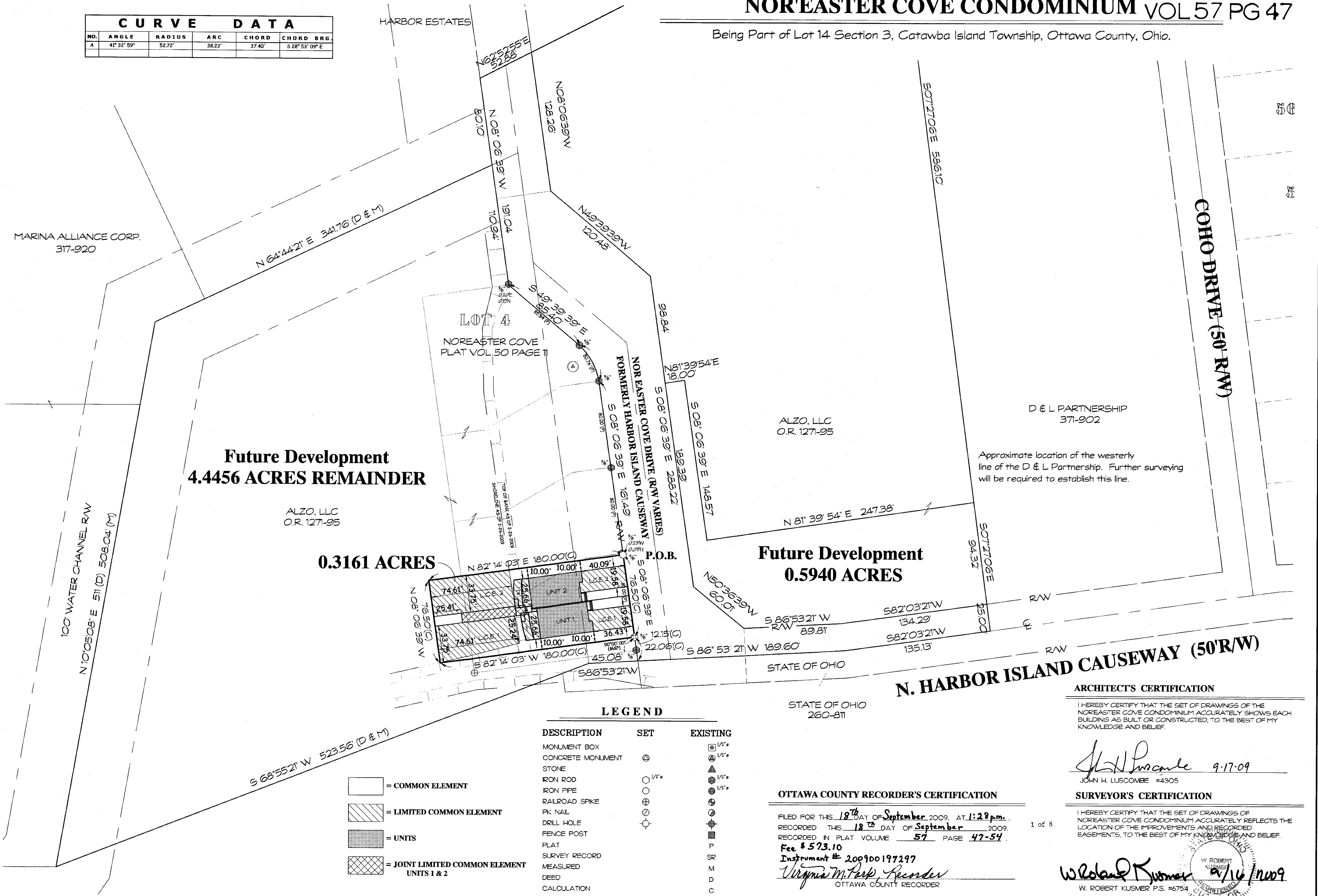


X:\DWG\Jobs-SURVEY\2009\0918-SI.dwg - Plot Tables - Ocp.p3 - Plot Tables - Ocp.cb - Page Size - ANSI Expand D (34.00 X 22.00 Inches)

CURVE DATA				
NO.	ANGLE	RADIUS	ARC	CHORD BRG.
A	41° 32' 59"	52.72'	38.23'	S 28° 53' 09" E

NOREASTER COVE CONDOMINIUM VOL 57 PG 47

Being Part of Lot 14 Section 3, Catawba Island Township, Ottawa County, Ohio.



LEGEND

DESCRIPTION	SET	EXISTING
MONUMENT BOX	⊙	⊙ 1/2"
CONCRETE MONUMENT	⊙	⊙ 1/2"
STONE	⊙	⊙ 1/2"
IRON ROD	⊙	⊙ 1/2"
IRON PIPE	⊙	⊙ 1/2"
RAILROAD SPIKE	⊕	⊕
PK NAIL	⊕	⊕
DRILL HOLE	⊕	⊕
FENCE POST	⊕	⊕
PLAT	P	P
SURVEY RECORD	SR	SR
MEASURED	M	M
DEED	D	D
CALCULATION	C	C

[White Box] = COMMON ELEMENT
 [Hatched Box] = LIMITED COMMON ELEMENT
 [Dotted Box] = UNITS
 [Cross-hatched Box] = JOINT LIMITED COMMON ELEMENT UNITS 1 & 2

LEGEND

DESCRIPTION	SET	EXISTING
MONUMENT BOX	⊙	⊙ 1/2"
CONCRETE MONUMENT	⊙	⊙ 1/2"
STONE	⊙	⊙ 1/2"
IRON ROD	⊙	⊙ 1/2"
IRON PIPE	⊙	⊙ 1/2"
RAILROAD SPIKE	⊕	⊕
PK NAIL	⊕	⊕
DRILL HOLE	⊕	⊕
FENCE POST	⊕	⊕
PLAT	P	P
SURVEY RECORD	SR	SR
MEASURED	M	M
DEED	D	D
CALCULATION	C	C

[White Box] = COMMON ELEMENT
 [Hatched Box] = LIMITED COMMON ELEMENT
 [Dotted Box] = UNITS
 [Cross-hatched Box] = JOINT LIMITED COMMON ELEMENT UNITS 1 & 2

OTTAWA COUNTY RECORDER'S CERTIFICATION

FILED FOR THIS 18TH DAY OF September 2009, AT 1:28 p.m.
 RECORDED THIS 18TH DAY OF September 2009.
 RECORDED IN PLAT VOLUME 57 PAGE 47-54.
 Fee \$ 573.10
 Instrument # 200900197297
 Virginia M. Peck, Recorder
 OTTAWA COUNTY RECORDER

ARCHITECT'S CERTIFICATION

I HEREBY CERTIFY THAT THE SET OF DRAWINGS OF THE NOREASTER COVE CONDOMINIUM ACCURATELY SHOWS EACH BUILDING AS BUILT OR CONSTRUCTED, TO THE BEST OF MY KNOWLEDGE AND BELIEF.

John H. Luscombe 9-17-09
 JOHN H. LUSCOMBE #4305

SURVEYOR'S CERTIFICATION

I HEREBY CERTIFY THAT THE SET OF DRAWINGS OF NOREASTER COVE CONDOMINIUM ACCURATELY REFLECTS THE LOCATION OF THE IMPROVEMENTS AND RECORDED EASEMENTS, TO THE BEST OF MY KNOWLEDGE AND BELIEF.

W. Robert Kusmer 9/16/2009
 W. ROBERT KUSMER P.S. #6754

KUSMER & ASSOCIATES, INC.
 Surveyors
 Architects
 Engineers

622 WEST STREET
 COLUMBIANA, OHIO 43001
 PHONE 419-333-7056
 FAX 419-333-7056
 E-MAIL kusmer.associates@bellsouth.net

NOREASTER COVE CONDOMINIUM
 BEING PART OF LOT 14 SECTION 3, CATAWBA ISLAND TOWNSHIP, OTTAWA COUNTY, OHIO.

Created 9:53 AM
 Monday, Aug. 24, 2009
 Last Saved WS2
 Sep. 16, 2009 3:55 PM
 Printed WS2
 Sep. 16, 2009 4:07 PM
 Revision Δ

0090PC No 7-17-04544

SCALE 1" = 40'
 SD 1
 09019S