

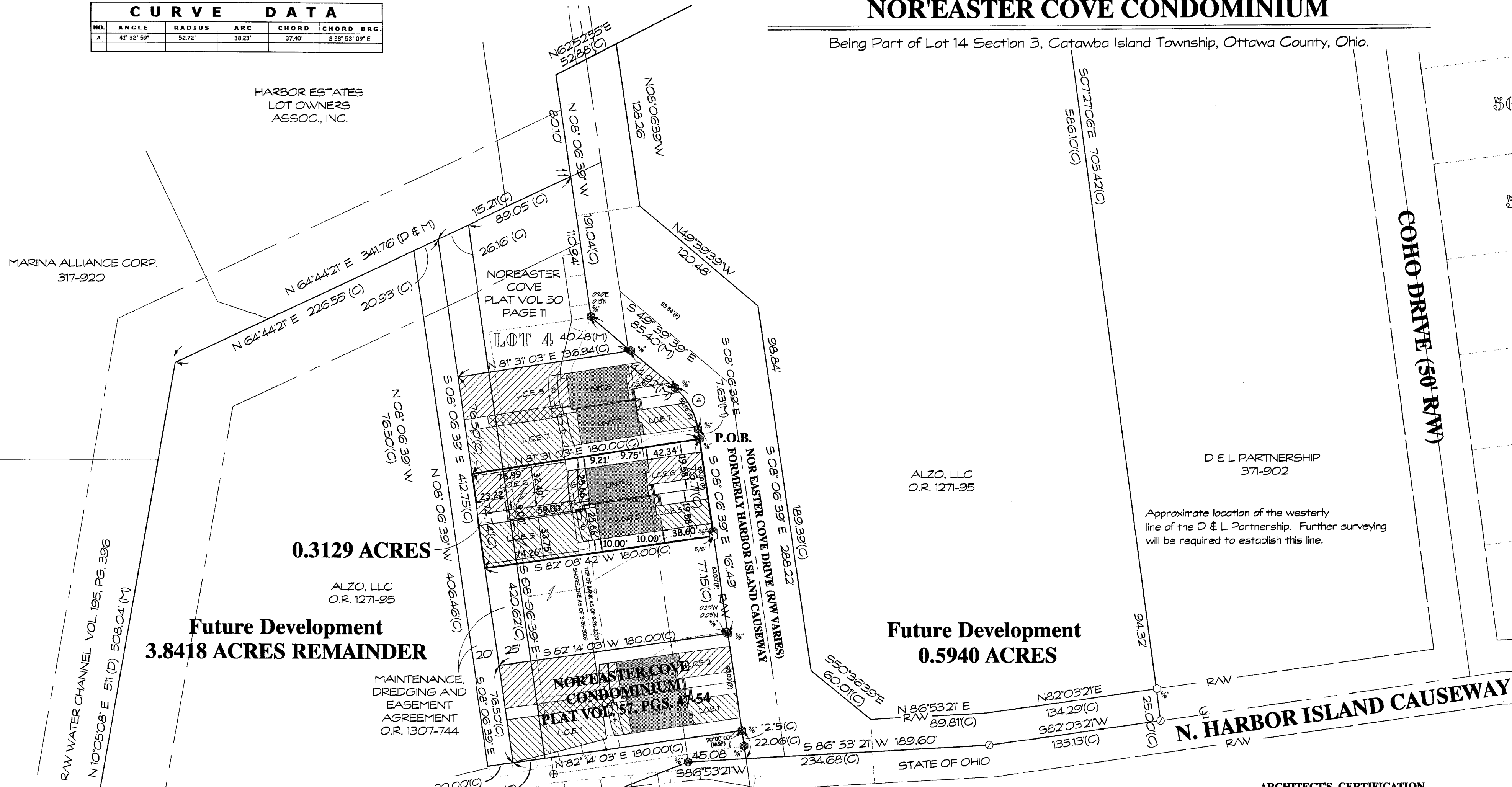
SECOND AMENDMENT VOL 60 PG 21  
**NOR'EASTER COVE CONDOMINIUM**

Being Part of Lot 14 Section 3, Catawba Island Township, Ottawa County, Ohio.

CURVE DATA					
NO.	ANGLE	RADIUS	ARC	CHORD	CHORD BRG.
A	41° 32' 59"	52.72'	38.23'	37.40'	S 28° 53' 09" E

HARBOR ESTATES  
 LOT OWNERS  
 ASSOC., INC.

MARINA ALLIANCE CORP.  
 317-920



0.3129 ACRES

ALZO, LLC  
 O.R. 1271-95

Future Development  
 3.8418 ACRES REMAINDER

MAINTENANCE,  
 DREDGING AND  
 EASEMENT  
 AGREEMENT  
 O.R. 1307-744

Future Development  
 0.5940 ACRES

ALZO, LLC  
 O.R. 1271-95

D & L PARTNERSHIP  
 371-902

Approximate location of the westerly  
 line of the D & L Partnership. Further surveying  
 will be required to establish this line.

**LEGEND**

DESCRIPTION	SET	EXISTING
MONUMENT BOX	□ 1/2"	□ 1/2"
CONCRETE MONUMENT	⊙ 1/2"	⊙ 1/2"
STONE	⊙ 1/2"	⊙ 1/2"
IRON ROD	○ 1/2"	○ 1/2"
IRON PIPE	○ 1/2"	○ 1/2"
RAILROAD SPIKE	⊕ 1/2"	⊕ 1/2"
PK NAIL	⊙ 1/2"	⊙ 1/2"
DRILL HOLE	○ 1/2"	○ 1/2"
FENCE POST	⊙ 1/2"	⊙ 1/2"
PLAT	□	□
SURVEY RECORD	SR	SR
MEASURED	M	M
DEED	D	D
CALCULATION	C	C

□	= COMMON ELEMENT
▨	= LIMITED COMMON ELEMENT
■	= UNITS
▩	= JOINT LIMITED COMMON ELEMENT UNITS 5 & 6

STATE OF OHIO  
 260-811

**OTTAWA COUNTY RECORDER'S CERTIFICATION**

FILED FOR THIS 29<sup>th</sup> DAY OF February 2012 AT 4:10 p.m.  
 RECORDED THIS 29<sup>th</sup> DAY OF February 2012.  
 RECORDED IN PLAT VOLUME 60 PAGE 21-28  
201200218887 Fee: \$590.80

*Virginia M. Taylor*  
 OTTAWA COUNTY RECORDER

**ARCHITECT'S CERTIFICATION**

I HEREBY CERTIFY THAT THE SET OF DRAWINGS OF THE  
 NOR'EASTER COVE CONDOMINIUM ACCURATELY SHOWS EACH  
 BUILDING AS BUILT OR CONSTRUCTED, TO THE BEST OF MY  
 KNOWLEDGE AND BELIEF.

*John H. Luscombe* 2-22-12  
 JOHN H. LUSCOMBE #4305 THIS DRAWG. NOT GENERATED  
 BY ME. L

**SURVEYOR'S CERTIFICATION**

I HEREBY CERTIFY THAT THE SET OF DRAWINGS OF  
 NOR'EASTER COVE CONDOMINIUM ACCURATELY REFLECTS THE  
 LOCATION OF THE IMPROVEMENTS AND RECORDED  
 EASEMENTS, TO THE BEST OF MY KNOWLEDGE AND BELIEF.

STATE OF OHIO  
 ROBERT KUSMER  
 0784  
 SURVEYOR

*Robert Kusmer* 2/20/2012  
 W. ROBERT KUSMER P.S. #6754

KUSMER & ASSOCIATES, INC.  
 Architects  
 Engineers  
 Surveyors

SECOND AMENDMENT  
 NOR'EASTER COVE CONDOMINIUM  
 BEING PART OF LOT 14 SECTION 3, CATAWBA ISLAND TOWNSHIP,  
 OTTAWA COUNTY, OHIO

Created: 12:11 PM  
 Thursday, Sep. 01, 2011  
 Last Saved: WS2  
 Feb. 20, 2012 9:39 AM  
 Printed: WS2  
 Feb. 20, 2012 4:10 PM  
 Revision: Δ

COOPPC No. 7-17-04544  
 NORTH  
 ASHPED

0 40  
 SCALE 1" = 40'

1A  
 TOGETHER WITH  
 PAGES 1 THRU 7

09019S

SITE PLAN

K:\DWG\3000 PROJECTS\Nor'ester Cove\080919.dwg - Plot Date: 02-20-2012 11:43:03 - Plot Table: 0 - Dec 998 1/1 Lined - Plot Size: A - ARCH Eground D (16.00 X 24.00) Inches

ANY INFORMATION OR DATA ON THIS DRAWING IS NOT INTENDED TO BE SUITABLE FOR REUSE BY ANY PERSON, FIRM, OR CORPORATION OR ANY OTHERS ON EXTENSIONS OF THIS PROJECT OR FOR ANY USE ON ANY OTHER PROJECT. ANY REUSE WITHOUT WRITTEN VERIFICATION AND ADAPTATION BY THE ENGINEER, ARCHITECT, OR SURVEYOR FOR THE SPECIFIC PURPOSE INTENDED WILL BE AT THE USER'S SOLE RISK AND WITHOUT LIABILITY OR LEGAL EXPOSURE TO THE ENGINEER, ARCHITECT, OR SURVEYOR. REUSE OF ANY INFORMATION OR DATA ON THIS DRAWING BY ANY PERSON, FIRM, OR CORPORATION IS A VIOLATION OF THE AGREEMENT AND IS SUBJECT TO LITIGATION BY ENGINEER, ARCHITECT, OR SURVEYOR. NOT PUBLISHED. ALL RIGHTS RESERVED.