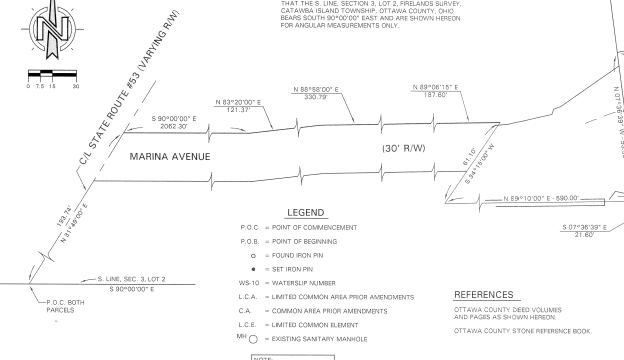


MARINA CLUB 38 THIRD AMENDMENT
AN EXCLUSIVE MARITIME COMMUNITY
PRESENTED BY: THOMAS L. COROGIN
PART OF SECTION 3, LOTS 1 & 2, FIRELANDS SURVEY,
ALSO KNOWN AS PART OF MARSH LOT 38 IN WEST HARBOR,
CATAWBA ISLAND TOWNSHIP, OTTAWA COUNTY, OHIO
2005

WATERSLIP BEARING TABLE

WS1	N 10°41'24" W	50.00'
WS2	S 79°18'36" E	18.00'
WS3	S 10°41'24" E	50.00'
WS4	N 10°41'24" W	50.00'
WS5	S 79°18'36" E	50.00'
WS6	S 10°41'24" E	50.00'
WS7	N 10°41'24" W	50.00'
WS8	S 79°18'36" E	18.00'
WS9	N 10°41'24" W	50.00'
WS10	S 79°18'36" E	18.00'
WS11	S 10°41'24" E	80.00'
WS12	N 79°18'36" E	48.00'
WS13	N 10°41'24" W	80.00'
WS14	N 79°18'36" E	18.00'
WS15	S 10°41'24" E	80.00'

NOTE: ALL DOCKS ARE LIMITED COMMON ELEMENTS



LEGAL DESCRIPTION WATERSLIP PARCEL
 Known as and being a parcel of land located in Section 3, Lot 2, Firelands Survey, Catawba Island Township, Ottawa County, Ohio and being more particularly described as follows:

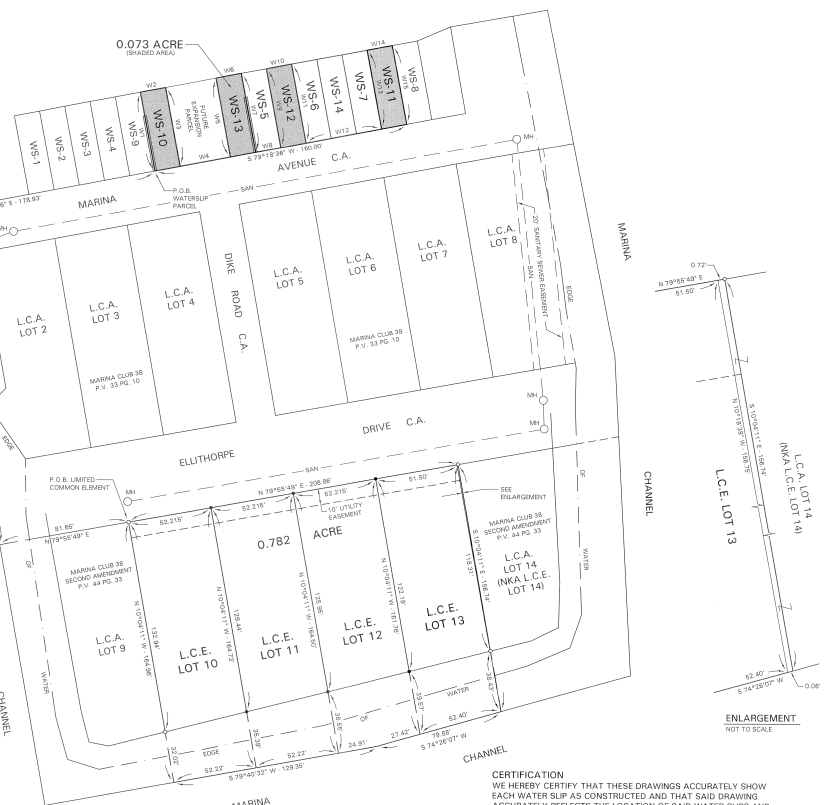
Commencing at the intersection of the South line of Section 3, Lot 2, Firelands Survey, Catawba Island Township, Ottawa County, Ohio with the centerline of State Route #53; thence proceeding North 31 degrees 49 minutes 00 seconds East in the centerline of said State Route #53 variable right-of-way width a distance of 193.74 feet to a point; thence proceeding South 80 degrees 00 minutes 00 seconds East a distance of 121.37 feet to a point; thence proceeding North 83 degrees 58 minutes 00 seconds East a distance of 330.79 feet to a point; thence proceeding North 89 degrees 00 minutes 00 seconds East a distance of 193.74 feet to a point; thence proceeding South 34 degrees 15 minutes 00 seconds West a distance of 611.10 feet to a point; thence proceeding North 79 degrees 15 minutes 00 seconds East a distance of 193.74 feet to a point; thence proceeding North 79 degrees 36 minutes 39 seconds West, in the westerly line of the Original Declaration parcel for Marina Club 38, an evidenced in Ottawa County Plat Volume 33 at Page 10, a distance of 93.59 feet to a point; thence proceeding North 79 degrees 18 minutes 36 seconds East, in the northerly line of said Marina Club 38, a distance of 176.53 feet to the southerly corner of WaterSlip 9 (WS-9) of the Marina Club 38 Second Amendment and the point and place of beginning of the parcel herein described; thence proceeding North 10 degrees 41 minutes 24 seconds West in the westerly line of WaterSlip 9 of the Marina Club 38 Second Amendment, as evidenced in Ottawa County Plat Volume 44 at Page 33, a distance of 50.00 feet to the northeast corner of WaterSlip 9; thence proceeding North 79 degrees 18 minutes 36 seconds East a distance of 18.00 feet to a point; thence proceeding South 10 degrees 41 minutes 24 seconds East a distance of 80.00 feet to a point; thence proceeding North 79 degrees 18 minutes 36 seconds East in the northerly line of Marina Avenue, a distance of 32.50 feet to a point; thence proceeding North 10 degrees 41 minutes 24 seconds West a distance of 50.00 feet to a point; thence proceeding North 79 degrees 18 minutes 36 seconds East a distance of 18.00 feet to the northerly corner of WaterSlip 5 (WS-5); thence proceeding South 10 degrees 41 minutes 24 seconds East in the westerly line of WaterSlip 5, a distance of 50.00 feet to the southerly corner of said WaterSlip 5; thence proceeding North 79 degrees 18 minutes 36 seconds East in the northerly line of Marina Avenue, a distance of 18.00 feet to a point marking the southerly corner of said WaterSlip 5; thence proceeding North 10 degrees 41 minutes 24 seconds West in the centerline of WaterSlip 9, a distance of 50.00 feet to the northerly corner of said WaterSlip 9; thence proceeding North 79 degrees 18 minutes 36 seconds East a distance of 18.00 feet to a point marking the northerly corner of WaterSlip 8 (WS-8); thence proceeding South 10 degrees 41 minutes 24 seconds East in the westerly line of WaterSlip 8, a distance of 50.00 feet to the southerly corner of said WaterSlip 8; thence proceeding North 79 degrees 18 minutes 36 seconds East in the northerly line of Marina Avenue, a distance of 48.00 feet to a point marking the southerly corner of WaterSlip 7 (WS-7); thence proceeding North 10 degrees 41 minutes 24 seconds West in the westerly line of said WaterSlip 7, a distance of 50.00 feet to the northerly corner of said WaterSlip 7; thence proceeding North 79 degrees 18 minutes 36 seconds East a distance of 18.00 feet to a point marking the northerly corner of WaterSlip 6 (WS-6); thence proceeding South 10 degrees 41 minutes 24 seconds East in the westerly line of said WaterSlip 6, a distance of 50.00 feet to the southerly corner of said WaterSlip 6; thence proceeding North 79 degrees 18 minutes 36 seconds East in the northerly line of Marina Avenue, a distance of 180.00 feet to the point and place of beginning. Said parcel contains 0.073 acres. Not subject to all easements of record.

NOTE: ALL DOCKS ARE LIMITED COMMON ELEMENTS

LIMITED COMMON ELEMENT PARCEL
 Known as and being a parcel of land located in Section 3, Lot 1 and 2, Firelands Survey, Catawba Island Township, Ottawa County, Ohio and being more particularly described as follows:

Commencing at the intersection of the South line of Section 3, Lot 2, Firelands Survey, Catawba Island Township, Ottawa County, Ohio with the centerline of State Route #53; thence proceeding North 31 degrees 49 minutes 00 seconds East in the centerline of said State Route #53 variable right-of-way width a distance of 193.74 feet to a point; thence proceeding South 80 degrees 00 minutes 00 seconds East a distance of 121.37 feet to a point; thence proceeding North 83 degrees 58 minutes 00 seconds East a distance of 330.79 feet to a point; thence proceeding North 89 degrees 00 minutes 15 seconds East a distance of 193.74 feet to a point; thence proceeding South 34 degrees 15 minutes 00 seconds West a distance of 611.10 feet to a point; thence proceeding North 79 degrees 15 minutes 00 seconds East a distance of 193.74 feet to a point; thence proceeding North 79 degrees 36 minutes 39 seconds West, in the westerly line of the Original Declaration parcel for Marina Club 38, an evidenced in Ottawa County Plat Volume 33 at Page 10, a distance of 93.59 feet to a point; thence proceeding North 79 degrees 18 minutes 36 seconds East, in the northerly line of said Marina Club 38, a distance of 176.53 feet to the southerly corner of WaterSlip 9 (WS-9) of the Marina Club 38 Second Amendment and the point and place of beginning of the parcel herein described; thence proceeding North 10 degrees 41 minutes 24 seconds West in the westerly line of WaterSlip 9 of the Marina Club 38 Second Amendment, as evidenced in Ottawa County Plat Volume 44 at Page 33, a distance of 50.00 feet to the northeast corner of WaterSlip 9; thence proceeding North 79 degrees 18 minutes 36 seconds East a distance of 18.00 feet to a point; thence proceeding South 10 degrees 41 minutes 24 seconds East a distance of 80.00 feet to a point; thence proceeding North 79 degrees 18 minutes 36 seconds East in the northerly line of Marina Avenue, a distance of 32.50 feet to a point; thence proceeding North 10 degrees 41 minutes 24 seconds West a distance of 50.00 feet to a point; thence proceeding North 79 degrees 18 minutes 36 seconds East a distance of 18.00 feet to the northerly corner of WaterSlip 5 (WS-5); thence proceeding South 10 degrees 41 minutes 24 seconds East in the westerly line of WaterSlip 5, a distance of 50.00 feet to the southerly corner of said WaterSlip 5; thence proceeding North 79 degrees 18 minutes 36 seconds East in the northerly line of Marina Avenue, a distance of 18.00 feet to a point marking the southerly corner of said WaterSlip 5; thence proceeding North 10 degrees 41 minutes 24 seconds West in the centerline of WaterSlip 9, a distance of 50.00 feet to the northerly corner of said WaterSlip 9; thence proceeding North 79 degrees 18 minutes 36 seconds East a distance of 18.00 feet to a point marking the northerly corner of WaterSlip 8 (WS-8); thence proceeding South 10 degrees 41 minutes 24 seconds East in the westerly line of WaterSlip 8, a distance of 50.00 feet to the southerly corner of said WaterSlip 8; thence proceeding North 79 degrees 18 minutes 36 seconds East in the northerly line of Marina Avenue, a distance of 48.00 feet to a point marking the southerly corner of WaterSlip 7 (WS-7); thence proceeding North 10 degrees 41 minutes 24 seconds West in the westerly line of said WaterSlip 7, a distance of 50.00 feet to the northerly corner of said WaterSlip 7; thence proceeding North 79 degrees 18 minutes 36 seconds East a distance of 18.00 feet to a point marking the northerly corner of WaterSlip 6 (WS-6); thence proceeding South 10 degrees 41 minutes 24 seconds East in the westerly line of said WaterSlip 6, a distance of 50.00 feet to the southerly corner of said WaterSlip 6; thence proceeding North 79 degrees 18 minutes 36 seconds East in the northerly line of Marina Avenue, a distance of 180.00 feet to the point and place of beginning. Said parcel contains 0.782 acres. Not subject to all easements of record.

11-178-CUB38-300
 H:\LEGALS\CATAWBA\CLUB38THRDAMND.WPD
 G:\SUBDIVISION\CATAWBA\MARINA CLUB 38 THIRD AMENDMENT.DWG



CERTIFICATION
 WE HEREBY CERTIFY THAT THESE DRAWINGS ACCURATELY SHOW EACH WATER SLIP AS CONSTRUCTED AND THAT SAID DRAWING ACCURATELY REFLECTS THE LOCATION OF SAID WATER SLIPS AND RECORDED EASEMENTS.

Allan W. Weirich 3-22-05
 ALLAN W. WEIRICH, P.S.
 PROFESSIONAL SURVEYOR #7427 DATE

Milton R. Pommeranz, P.E. 3-22-05
 MILTON R. POMMERANZ, P.E.
 PROFESSIONAL ENGINEER K63476 DATE

PREPARED BY:
BEC ASSOCIATES
 PROFESSIONAL ENGINEERING AND SURVEYING CONSULTANTS
 6622 West Harbor Road, Port Clinton, OH 43452
 Office (419) 808-9200 Fax (419) 898-2259



REVISED 3/22/05 (D.T.)
 REVISION 12/02/04 (J.B.)
 12/8/2004 (D.T.)