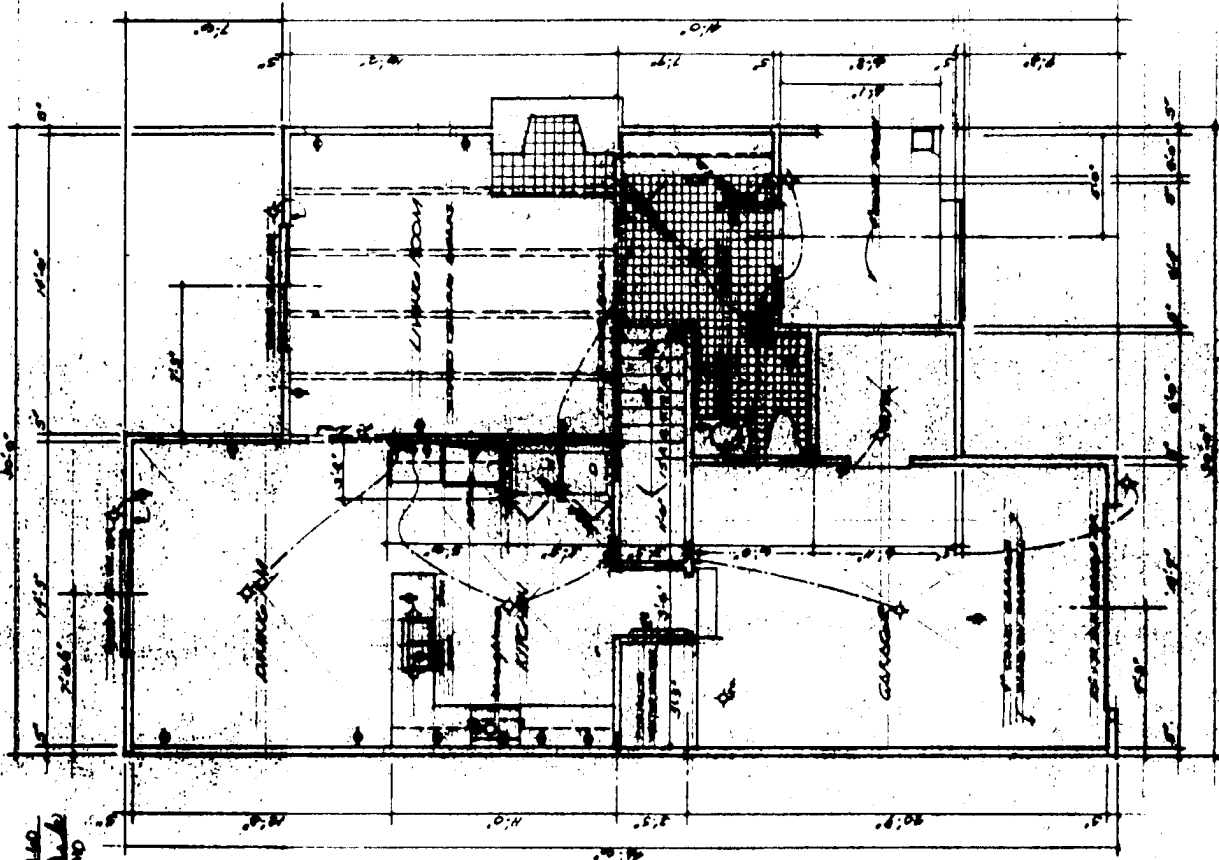
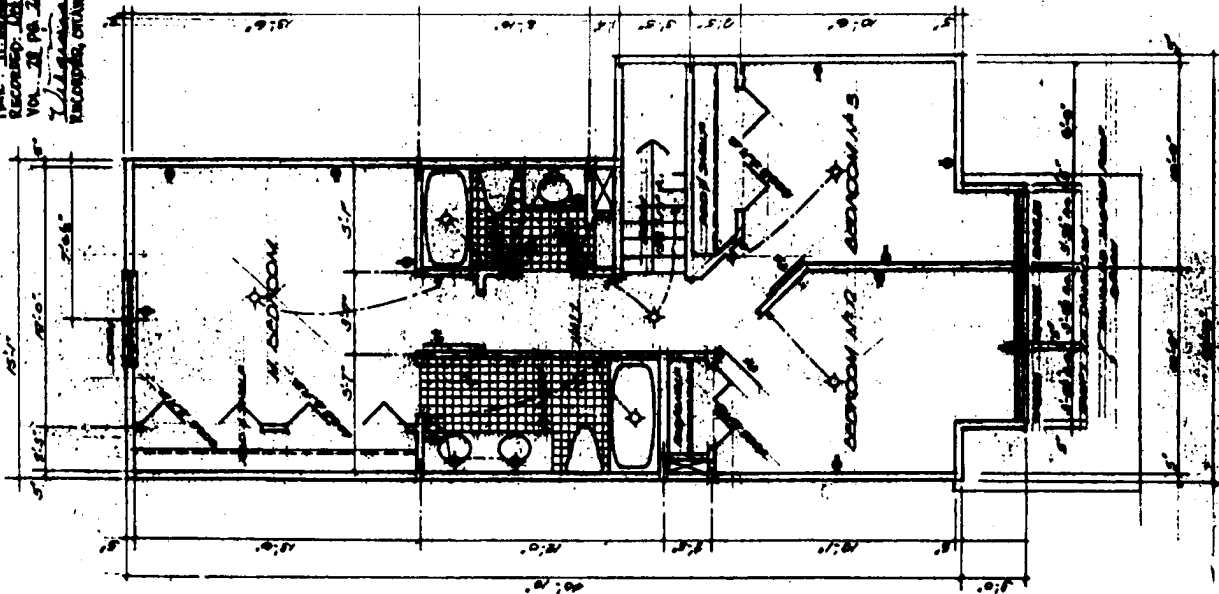


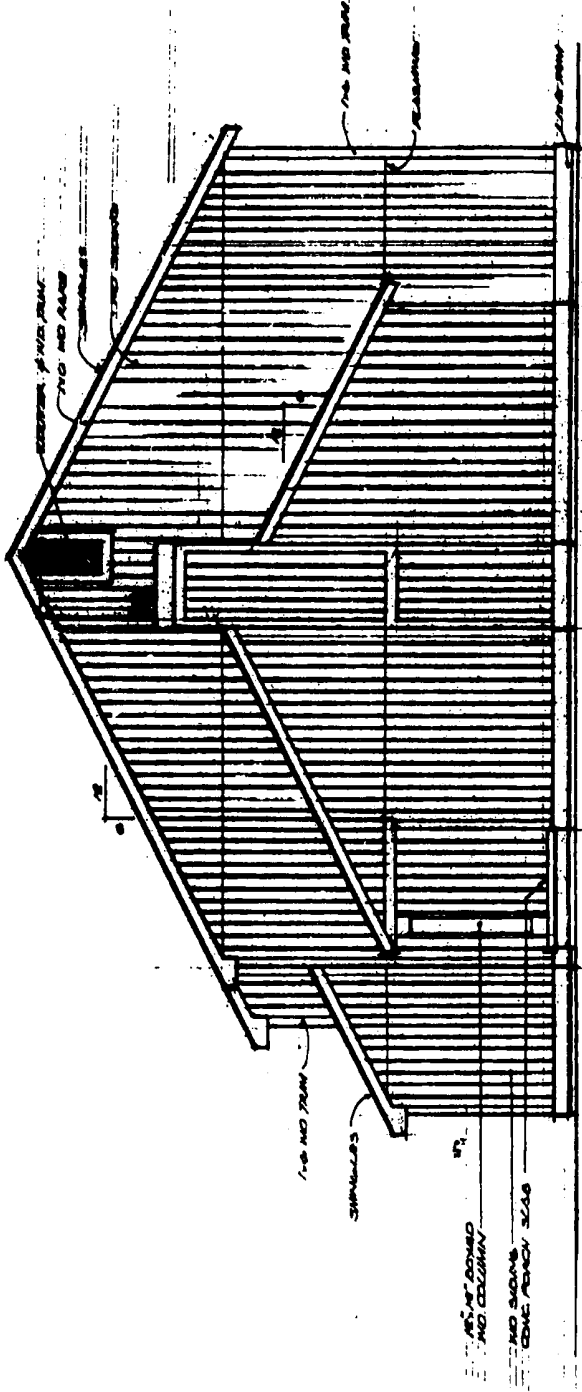
NO. 65944
RECORDED: Oct. 12, 1938
TIME: 11:30 AM
RECORDED: Oct. 13, 1938
VOL. 28, PG. 2428 FILE 3140
L. L. GARDNER, 722 1/2 South
COLUMBIANA COUNTY, OHIO



CERULANWOOD

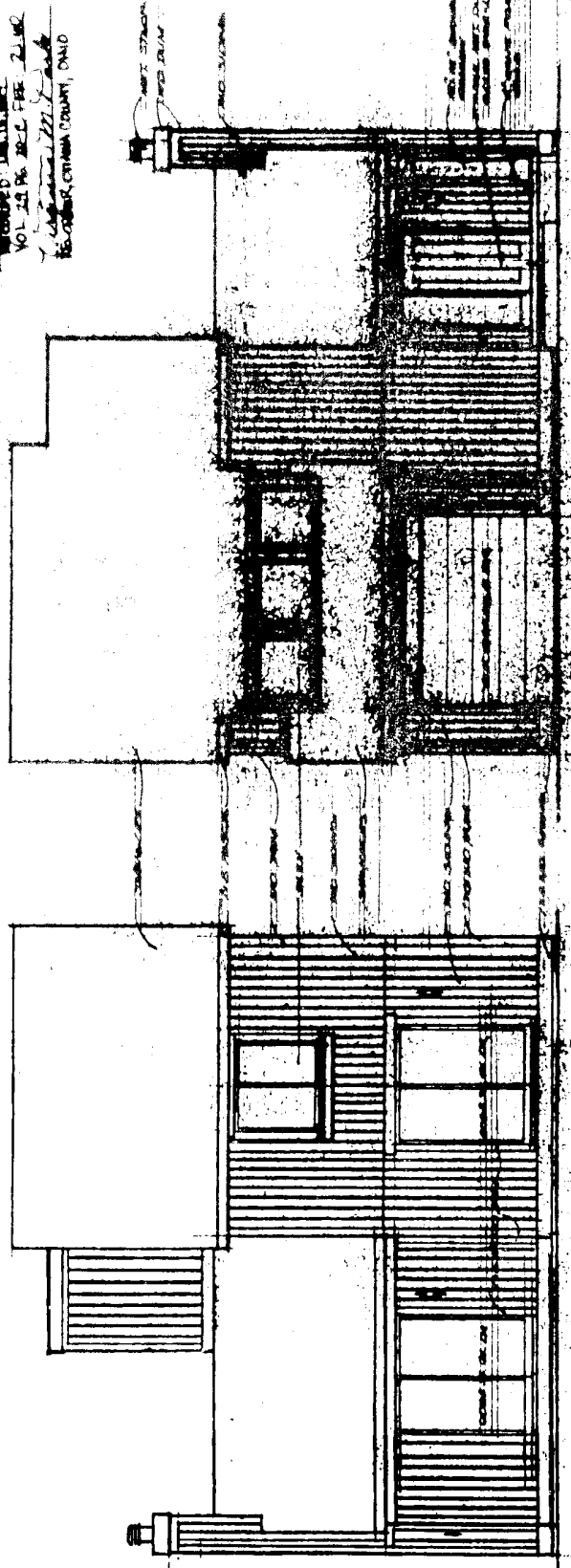
EDWARD J. JAY

722 1/2 SOUTH



FRONT ELEVATION
SCALE 1/4" = 1'-0"

0584
 RECEIVED: Oct. 12, 1977
 GROUP: DISTRICT
 VOL. 29 PG. 29, FEB. 2, 1978
 REGISTERED ARCHITECT
 REGISTER, CUYAHOGA COUNTY, OHIO



REAR ELEVATION
SCALE 1/4" = 1'-0"

