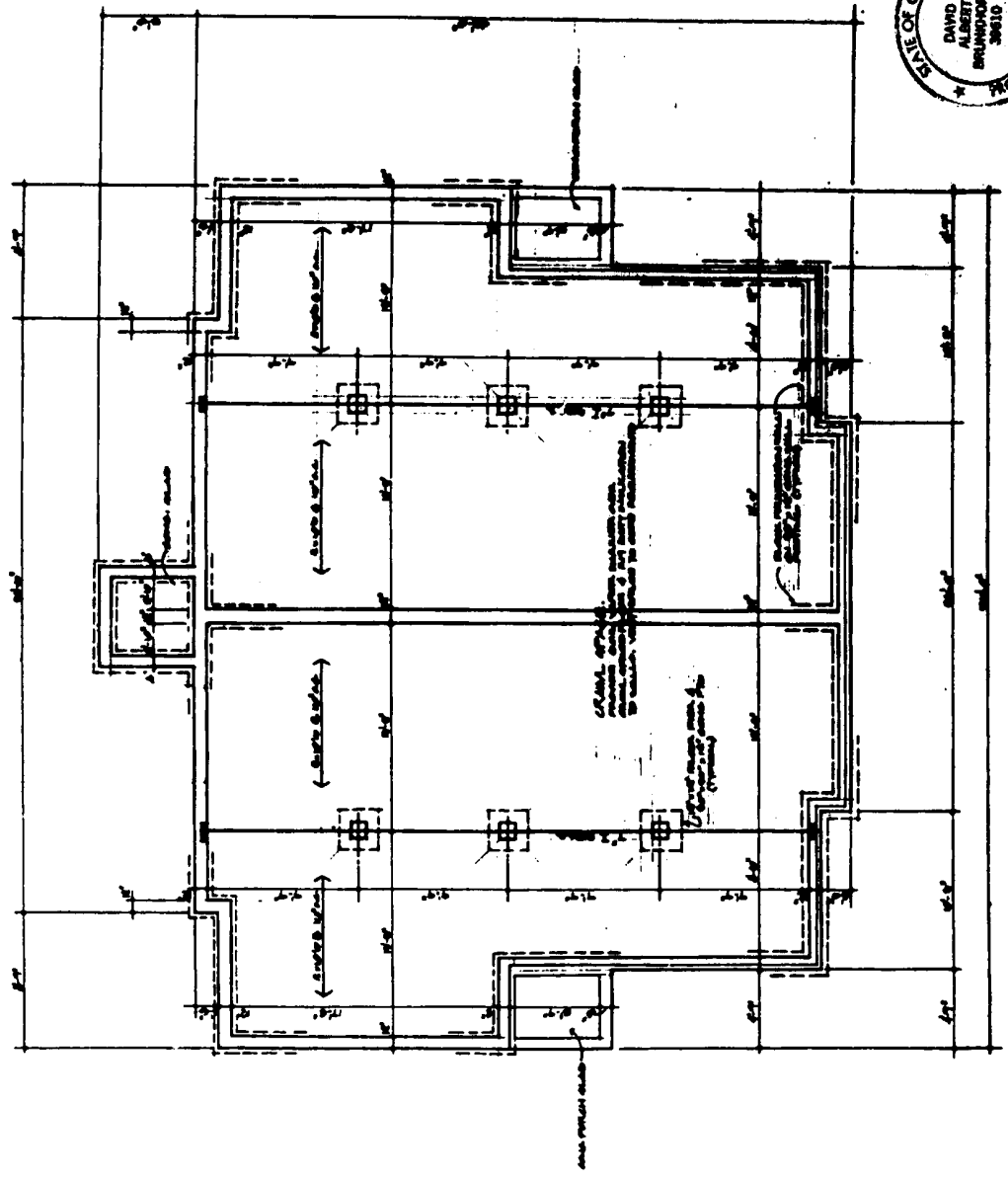


LAKE IN THE WOODS
 CATAMBA LAKES DEVELOPMENT INC.

DUPLEX LIVING UNIT

LOT _____
 MODEL _____



90972
 RECEIVED: Oct 12, 1987
 TIME: 11:52 AM
 RECORDED: Oct 19, 1987
 VOL. 29 PG. 19-A Pgs. 18-21
Charlotte M. Park
 RECORDS, CLERK COUNTY, OHIO

I HEREBY CERTIFY THAT THE WITHIN DRAWINGS ACCURATELY SHOW
 THE BUILDING AS CONSTRUCTED.

David Brunshorst
 STATE OF OHIO
 PROFESSIONAL ENGINEER
 NO. 39610
 BRUNSHORST ENGINEERS, INC.
 1001 N. HIGHWAY 100
 COLUMBUS, OHIO 43260
 (614) 297-1000

10/2/87
 DATE

FOUNDATION PLAN
 SCALE: 1/8" = 1'-0"

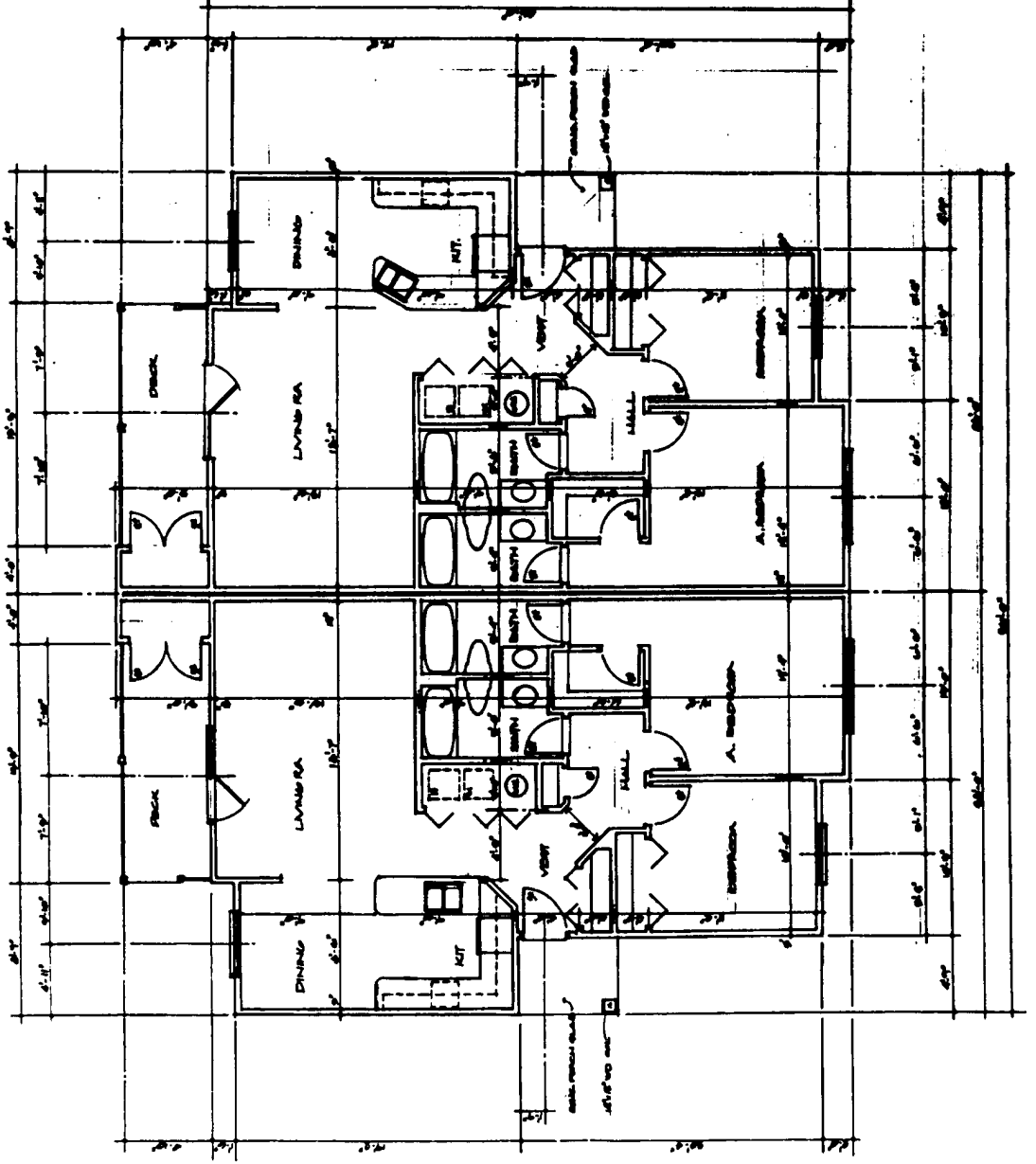
A-1

VOLUME 29 PG. 19-B (3/6)

50982
RECEIVED: Oct. 12, 1989
TIME: 11:45 AM
REGISTERED: 107-13, 1989
Vol. 29 PG. 19-B PG. 19.32
Dariusz M. Leski
REGISTERED, OTTAWA COUNTY, ONTIO

LAKE IN THE WOODS

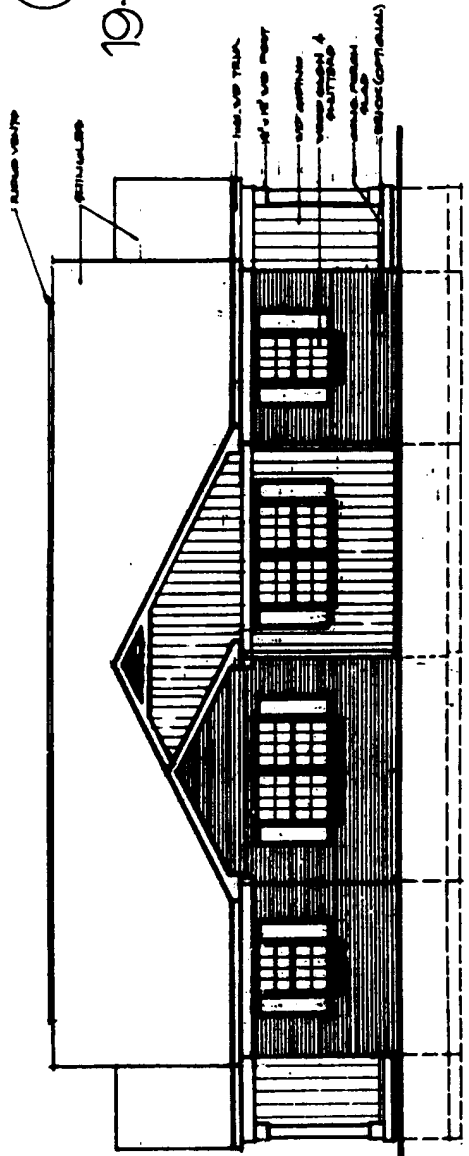
DUPLEX LIVING UNIT



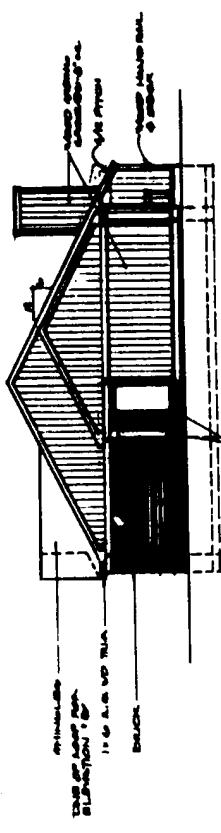
FLOOR PLAN

LIO A. ALESSANDRI-ARCH-PC

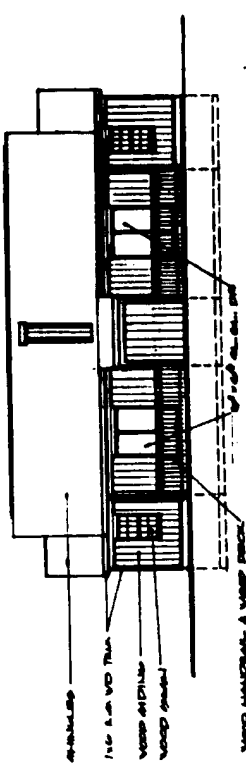
4/6
19-C



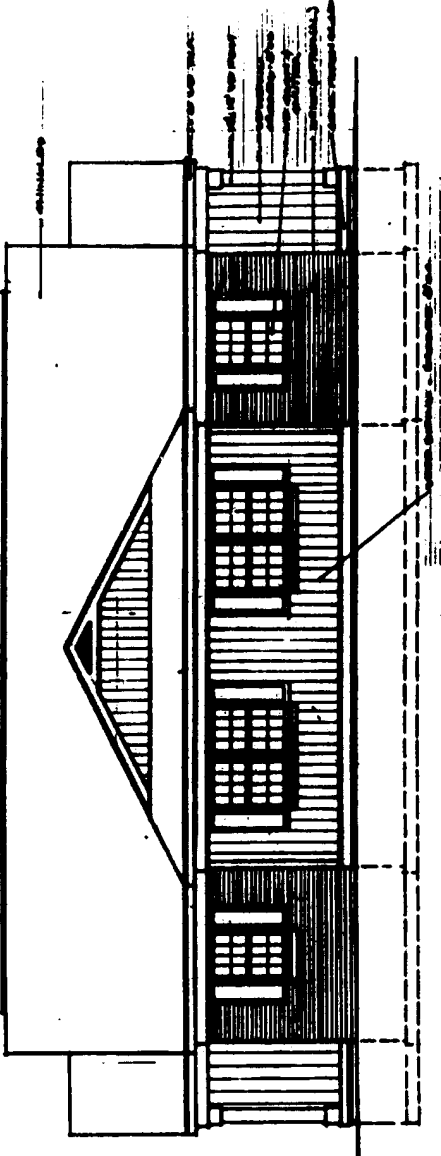
FRONT ELEVATION 'A'
SCALE 3/8" = 1'-0"



LEFT ELEVATION
SCALE 3/8" = 1'-0"



REAR ELEVATION
SCALE 3/8" = 1'-0"



FRONT ELEVATION 'B'
SCALE 3/8" = 1'-0"

LAKE IN THE WOODS
CATAWBA LAKES DEVELOPMENT INC.

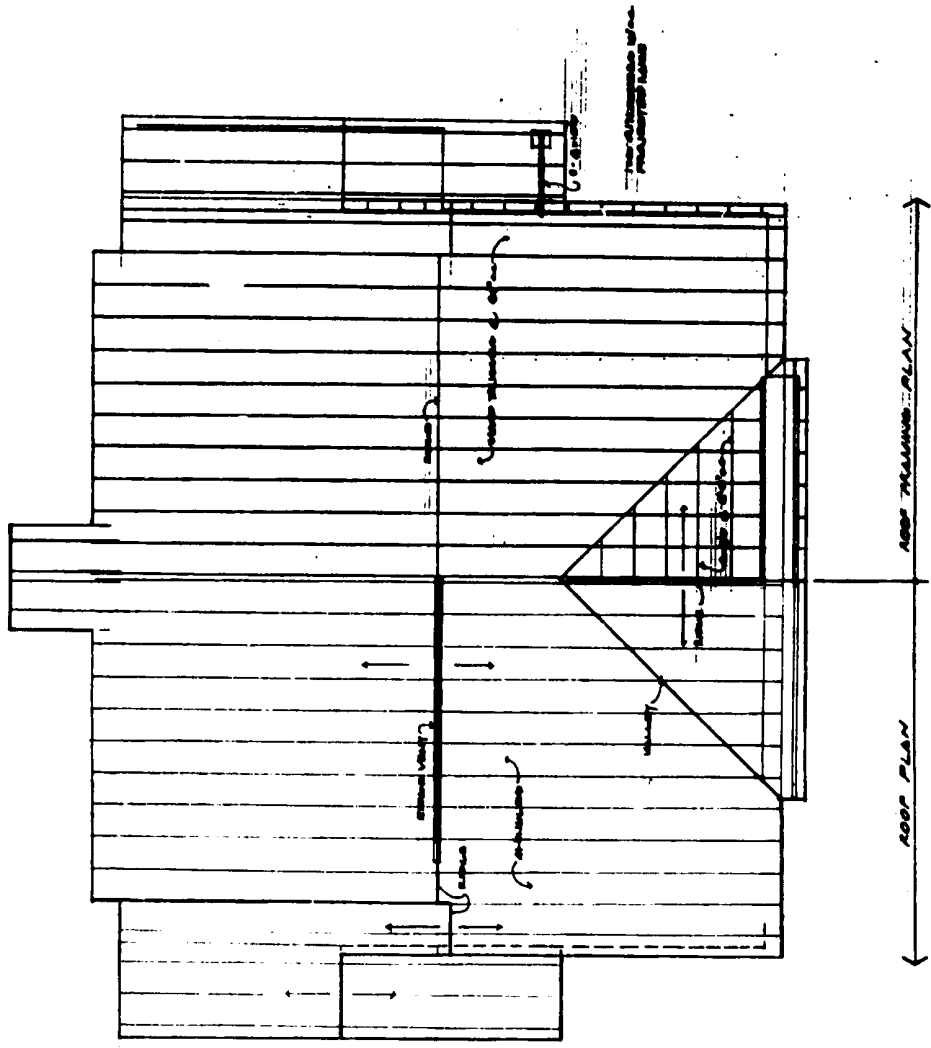
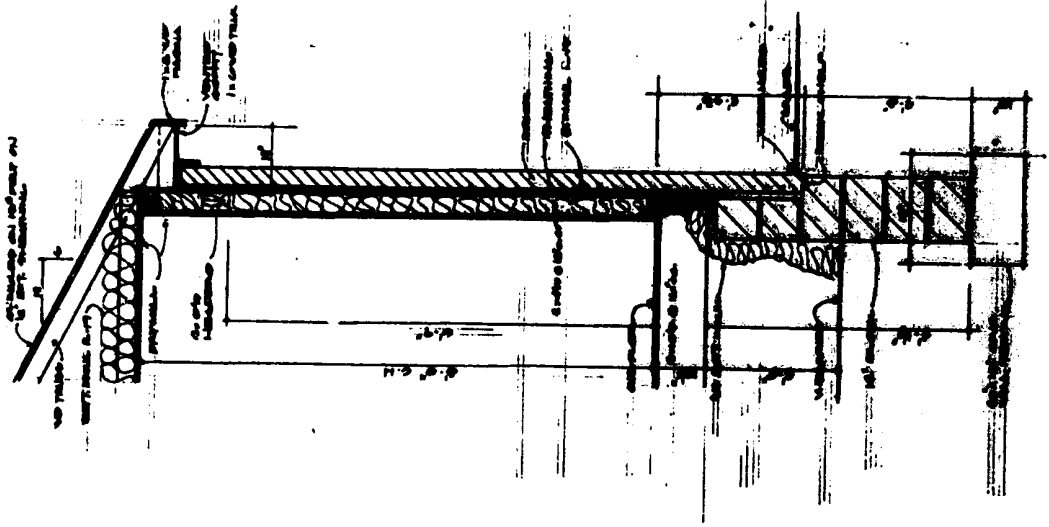
DUPLEX LIVING UNIT

63472
RECEIVED: Dec. 12, 1989
TIME: 11:52 AM
REVISED: 01 JAN 1990
VOL. 29 PG. REC. FEE 19.20
Cherry Lake
RECORDS, CATAWBA COUNTY, OHIO

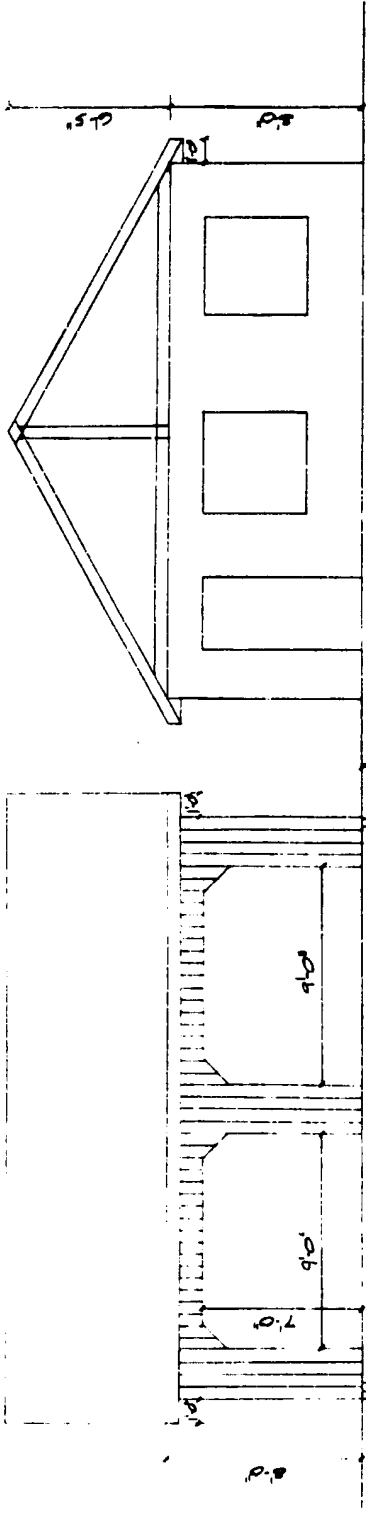
99972
RECEIVED: JUN 12 1987
TIME: 11:28 AM
RECORDED: JUN 18 1987
VOL. 31 PG. 19-D FEB 19 1990
Thomas M. Lech
RECORDS, ORAMA COUNTY, OHIO

LAKE IN THE WOODS
CATAWBA LAKES DEVELOPMENT INC.

DUPLEX LIVING UNIT

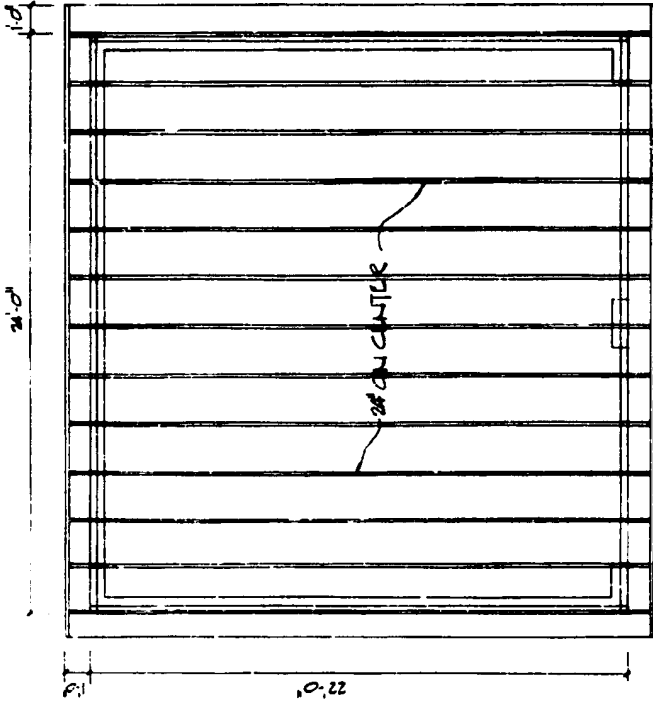


99487
 RECEIVED: JUN. 12, 1989
 TIME: 11:22 AM
 RECORDED: DEC. 13, 1989
 VOL. 28 PG. 18E PEE BLD
Virginia M. Lark
 RECORDER, OTTAWA COUNTY, OHIO

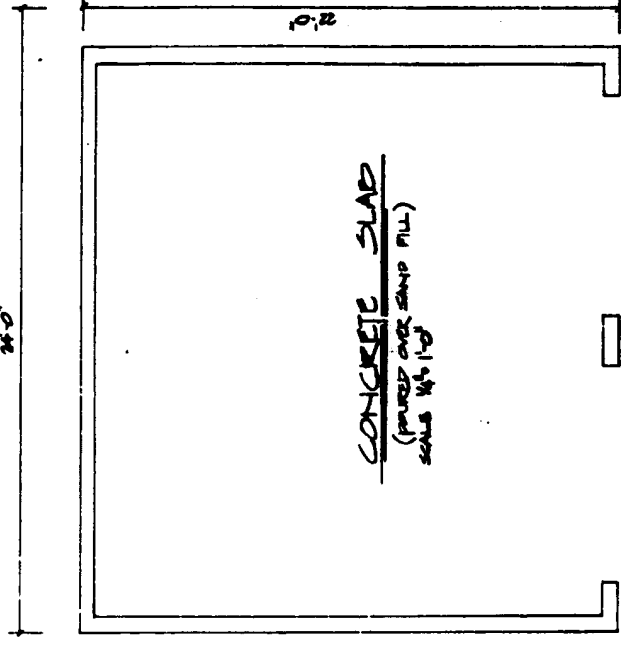


FRONT ELEVATION
 SCALE 1/8" = 1'-0"

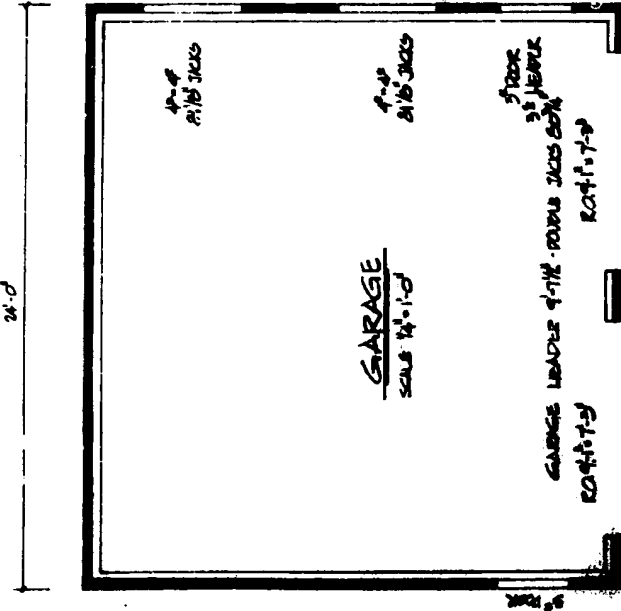
WEST ELEVATION
 SCALE 1/8" = 1'-0"



TRUSS DETAIL
 SCALE 1/8" = 1'-0"



CONCRETE SLAB
 (POURED OVER SAND FILL)
 SCALE 1/8" = 1'-0"



GARAGE
 SCALE 1/8" = 1'-0"

**GARAGE PLAN FOR BUILDING #24
 LAKE - IN - THE - WOODS**