

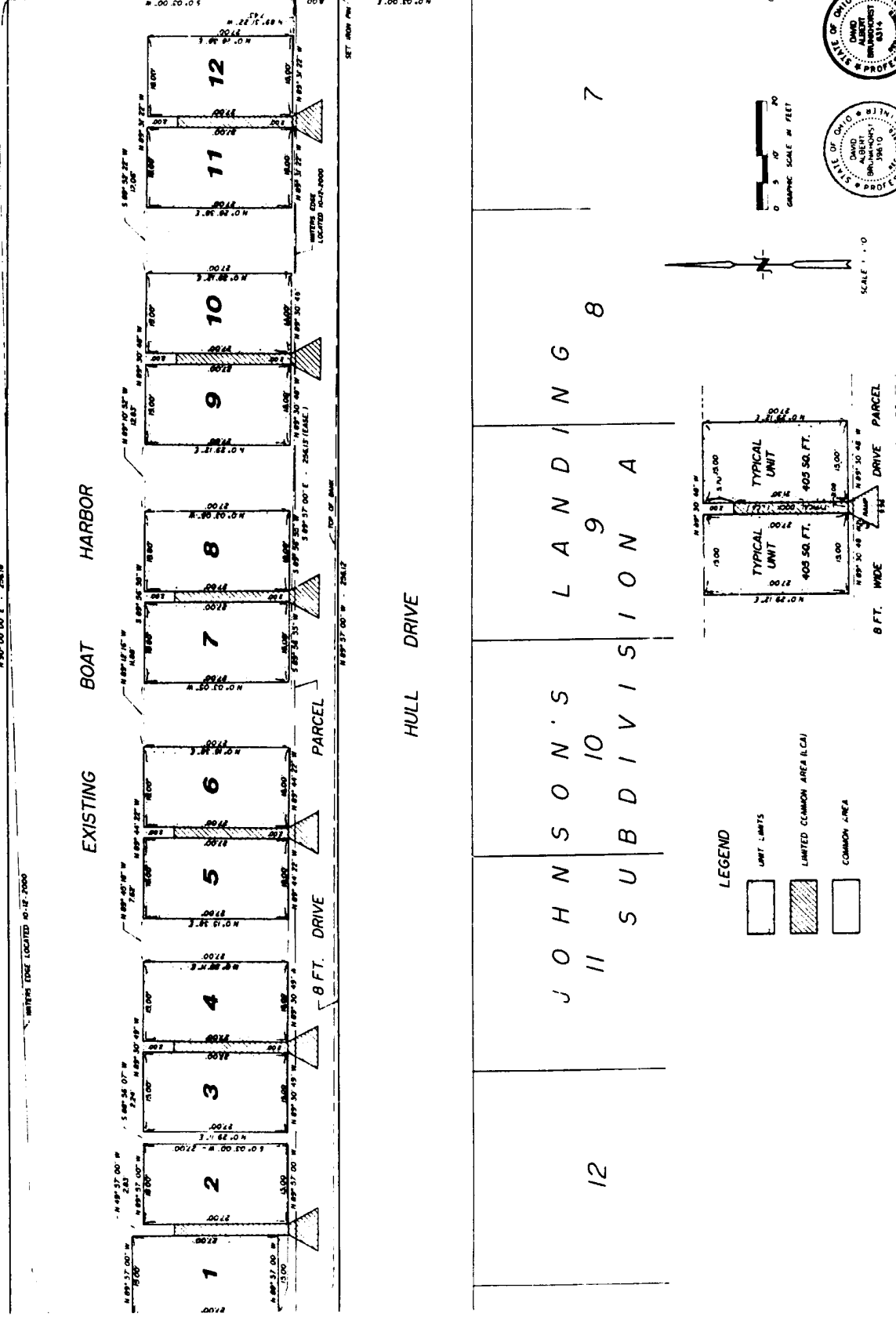
JOHNSON'S LANDING MARINA CONDOMINIUM

LOCATED WITHIN JOHNSON'S LANDING SUBDIVISION B
PART OF SEC. 3, LOT 14, FIRELANDS SURVEY
CATAWBA ISLAND TOWNSHIP
OTTAWA COUNTY, OHIO
2001

GARBER S. R. ENGINEERS
PRINTING
DESIGN
CATAWBA ISLAND TOWNSHIP
OTTAWA COUNTY, OHIO
419-338-2222

Legal Description - Johnson's Landing Marina Condominium
Known as and being a parcel located within the limits of Johnson's Landing Subdivision B as evidenced on Ottawa County Plat Volume 8 at Pages 16, 17 and being in Section 14 of Lot 14 Firelands Survey, Catawba Island Township, Ottawa County, Ohio and being more particularly described as follows:
Commencing at a found iron pin marking the Northeast corner of Lot 14, Johnson's Landing Subdivision A, thence proceeding North 89 degrees 57 minutes 55 seconds West 231.70 feet to a point, thence proceeding North 89 degrees 57 minutes 55 seconds East a distance of 231.70 feet to a set iron pin and the point of beginning of the parcel herein described, thence proceeding North 89 degrees 57 minutes 55 seconds East a distance of 100.00 feet to a set iron pin, thence proceeding North 89 degrees 57 minutes 55 seconds East a distance of 100.00 feet to a set iron pin, thence proceeding North 89 degrees 57 minutes 55 seconds East a distance of 100.00 feet to a set iron pin, thence proceeding South 89 degrees 57 minutes 55 seconds West a distance of 231.70 feet to a set iron pin, thence proceeding South 89 degrees 57 minutes 55 seconds West a distance of 100.00 feet to a set iron pin, thence proceeding South 89 degrees 57 minutes 55 seconds West a distance of 100.00 feet to a set iron pin, thence proceeding South 89 degrees 57 minutes 55 seconds West a distance of 100.00 feet to the point and place of beginning. Said parcel contains 0.362 acres and is subject to all assessments, taxes and liabilities and is based on the assumption that the North line of Lot 14, Johnson's Landing Subdivision A located in Section 14 of Lot 14, Firelands Survey, Catawba Island Township, Ottawa County, Ohio bears North 89 degrees 57 minutes 55 seconds West.

The above legal description is subject to that portion of Hull Drive more particularly described herein.
Known as and being a portion of a parcel described and known as "Hull Drive" located within the limits of Johnson's Landing Subdivision B as evidenced on Ottawa County Plat Volume 8 at Pages 16, 17 and being in Section 14 of Lot 14 Firelands Survey, Catawba Island Township, Ottawa County, Ohio and being more particularly described as follows:
Commencing at a found iron pin marking the Northeast corner of Lot 14, Johnson's Landing Subdivision A, thence proceeding North 89 degrees 57 minutes 55 seconds West 231.70 feet to a point, thence proceeding North 89 degrees 57 minutes 55 seconds East a distance of 231.70 feet to a set iron pin and the point and place of beginning of the parcel herein described, thence proceeding North 89 degrees 57 minutes 55 seconds East a distance of 100.00 feet to a set iron pin, thence proceeding North 89 degrees 57 minutes 55 seconds East a distance of 100.00 feet to a set iron pin, thence proceeding South 89 degrees 57 minutes 55 seconds West a distance of 231.70 feet to a set iron pin, thence proceeding South 89 degrees 57 minutes 55 seconds West a distance of 100.00 feet to the point and place of beginning. Said parcel contains 0.362 acres and is subject to all assessments, taxes and liabilities and is based on the assumption that the North line of Lot 14, Johnson's Landing Subdivision A located in Section 14 of Lot 14, Firelands Survey, Catawba Island Township, Ottawa County, Ohio bears North 89 degrees 57 minutes 55 seconds West.



THE DRAWINGS ARE MADE TO SHOW THE GENERAL LAYOUT OF THE CONDOMINIUM UNITS AS COMPLETED.
DAVID A. JOHNSON
PROFESSIONAL ENGINEER
400 WEST STATE STREET
CATAWBA ISLAND TOWNSHIP
OTTAWA COUNTY, OHIO
PHONE 419-338-2222

DAVID A. JOHNSON
PROFESSIONAL ENGINEER
400 WEST STATE STREET
CATAWBA ISLAND TOWNSHIP
OTTAWA COUNTY, OHIO
PHONE 419-338-2222

DAVID A. JOHNSON
PROFESSIONAL ENGINEER
400 WEST STATE STREET
CATAWBA ISLAND TOWNSHIP
OTTAWA COUNTY, OHIO
PHONE 419-338-2222

DATE: 3-28-07
BY: [Signature]
TITLE: [Signature]
SCALE: 1" = 10'