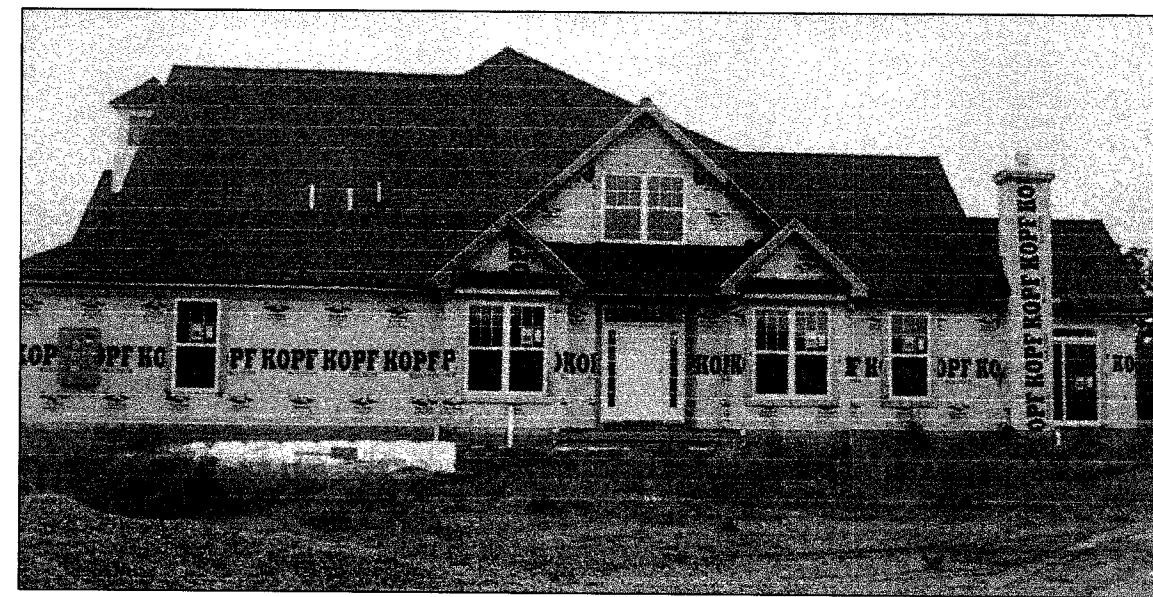


BUILDING 19 LEFT



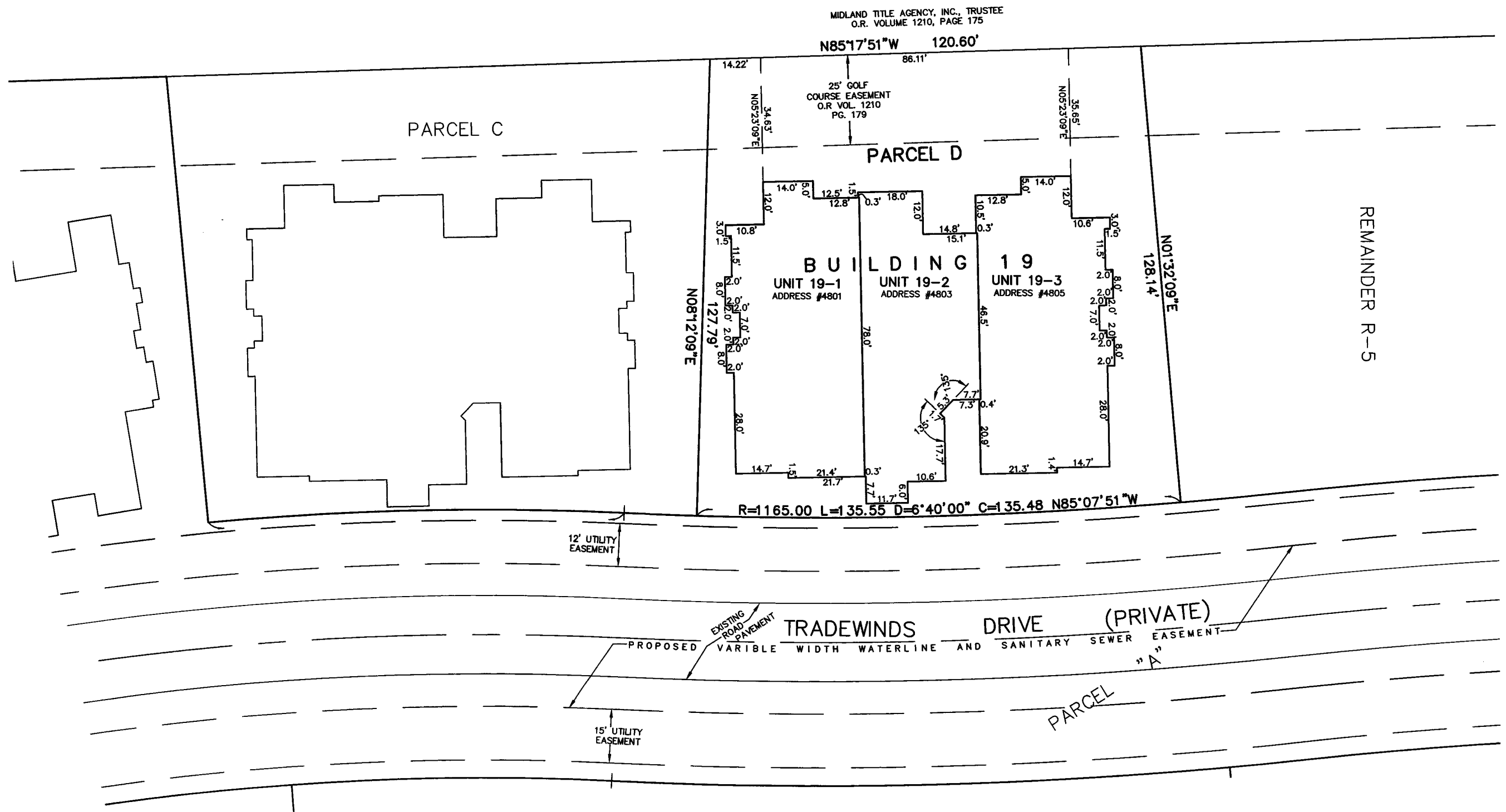
BUILDING 19 FRONT



BUILDING 19 RIGHT



BUILDING 19 REAR



N
BASED ON WEST CATAWBA
RD. BEARING N0°00'00"E
AT WOODLAND DRIVE

GRAPHIC SCALE: 1" = 20'
0 10 20 40

UNIT HEIGHTS:
(DISTANCES FROM FLOOR TO CEILING)
GARAGE AREA: 9.5'
GROUND FLOOR:
LIVING SPACES BELOW SECOND FLOOR: 9.0'
LIVING SPACES OPEN TO ABOVE: 18.0'
BEDROOM SPACES: 12.0'
BATHROOM AND STORAGE SPACES: 8.0'
SECOND FLOOR: 8.0'

REVISIONS	

**HARBOR'S EDGE AT CATAWBA
ISLAND CLUB CONDO #4 PH. 4**
OF PART OF CATAWBA ISLAND TWP., SECTION 3, ORIGINAL
LOT 5, OF THE WESTERN RESERVE, OTTAWA COUNTY, OHIO

**THE HENRY G. REITZ
ENGINEERING COMPANY**
4214 ROCKY RIVER DRIVE
CLEVELAND, OHIO 44135
PHONE: (216) 251-3033

2
2
JUNE
2011