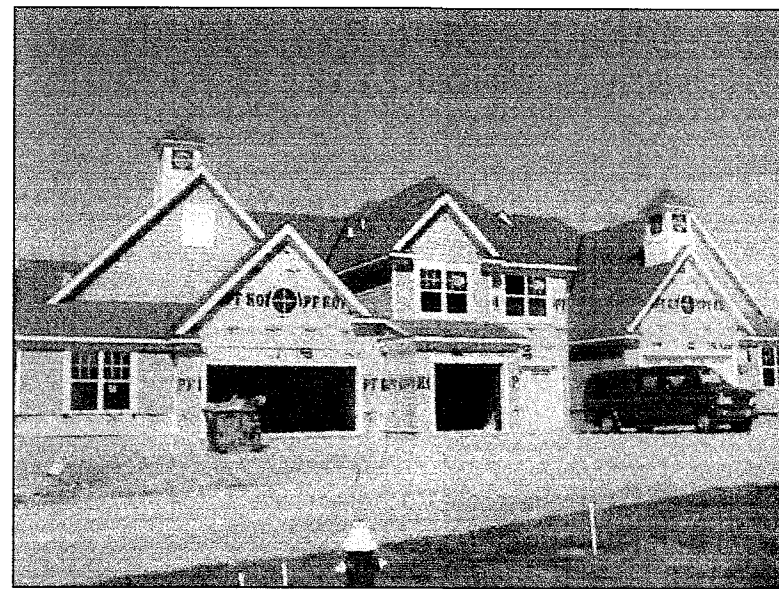


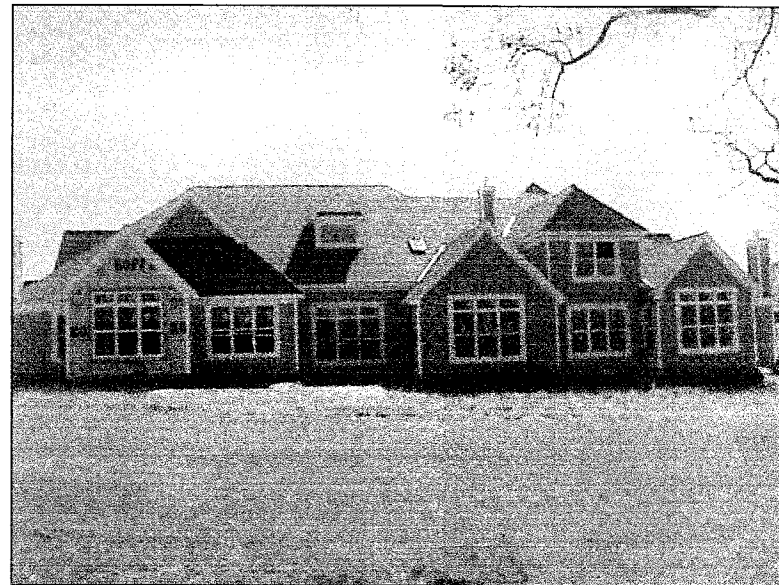
BUILDING 18 LEFT



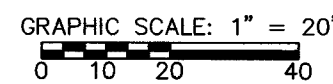
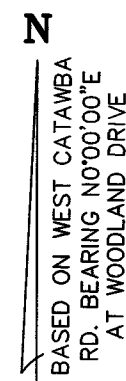
BUILDING 18 FRONT



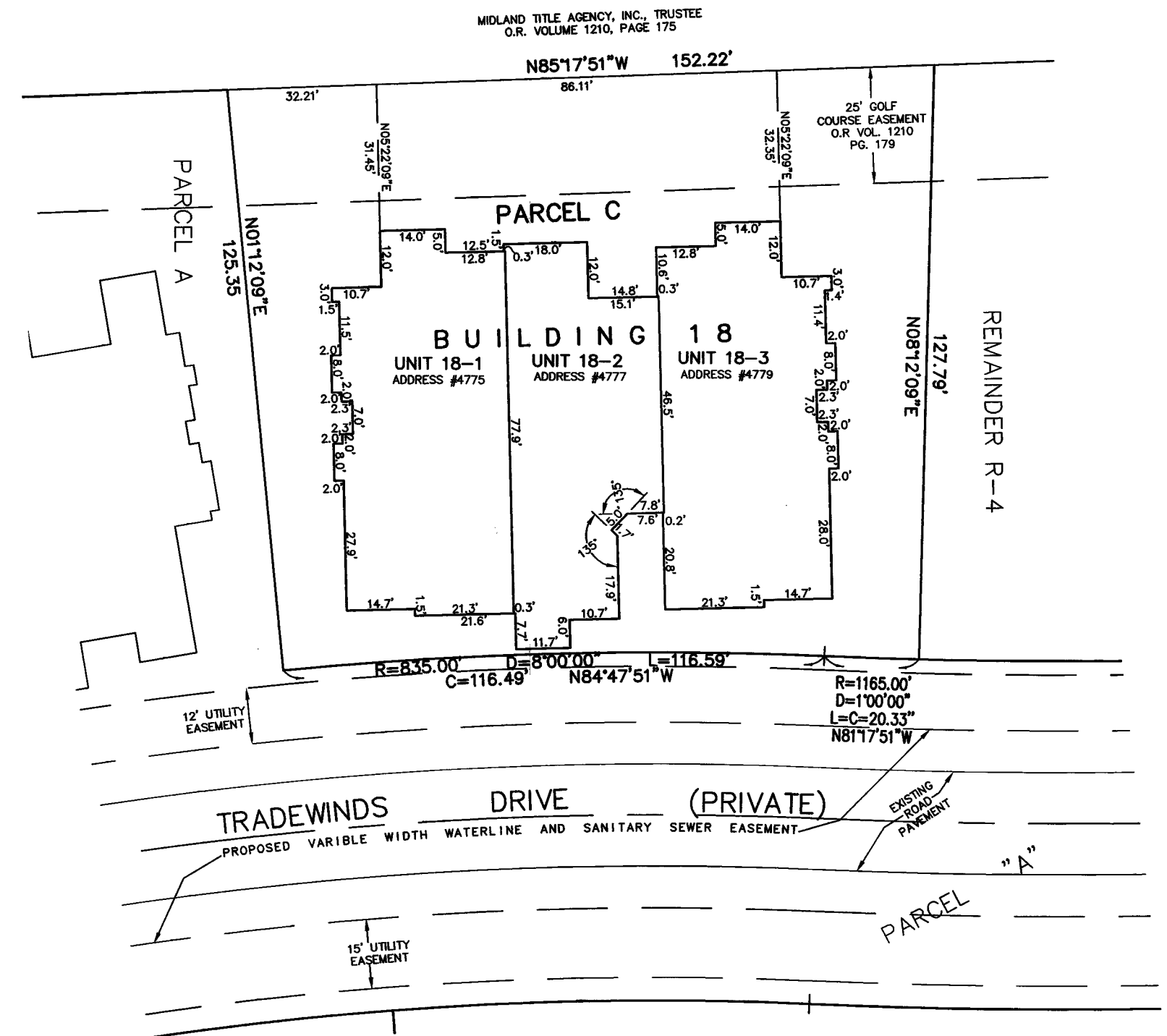
BUILDING 18 RIGHT



BUILDING 18 REAR



UNIT HEIGHTS:
 (DISTANCES FROM FLOOR TO CEILING)
 GARAGE AREA: 9.5'
 GROUND FLOOR:
 LIVING SPACES BELOW SECOND FLOOR: 9.0'
 LIVING SPACES OPEN TO ABOVE: 18.0'
 BEDROOM SPACES: 12.0'
 BATHROOM AND STORAGE SPACES: 8.0'
 SECOND FLOOR: 8.0'



REVISIONS		

HARBOR'S EDGE AT CATAWBA ISLAND CLUB CONDO #4 PH. 3
 OF PART OF CATAWABA ISLAND TWP., SECTION 3, ORIGINAL LOT 5, OF THE WESTERN RESERVE, OTTAWA COUNTY, OHIO

THE HENRY G. REITZ ENGINEERING COMPANY
 4214 ROCKY RIVER DRIVE
 CLEVELAND, OHIO 44135
 PHONE: (216) 251-3033

2
 2
 OCTOBER
 2010

L:\dwg\VA\Catawba\condos\4-3.dwg, 1:20