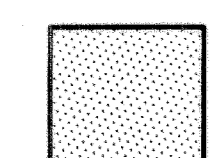
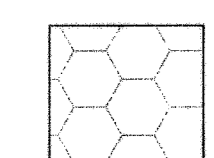
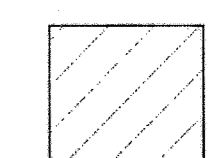


**LEGEND**

-  LIMITED COMMON AREAS APPURTENANT TO UNITS, AS SHOWN.
-  COMMON AREAS
-  COMMON AREAS SUBJECT TO CATAWBA-CLEVELAND DEVELOPMENT CORP. EASEMENTS RECORDED IN BOOK 941, PAGES 790-800.

ALL COMMON AREAS ALSO SUBJECT TO EASEMENTS:

- W- (WATER) TO OTTAWA COUNTY, OH
- SAN- (SAN.) TO OTTAWA COUNTY, OH
- UGE- (ELEC.) TO OHIO EDISON CO.
- GAS- (GAS) TO COLUMBIA GAS CO.

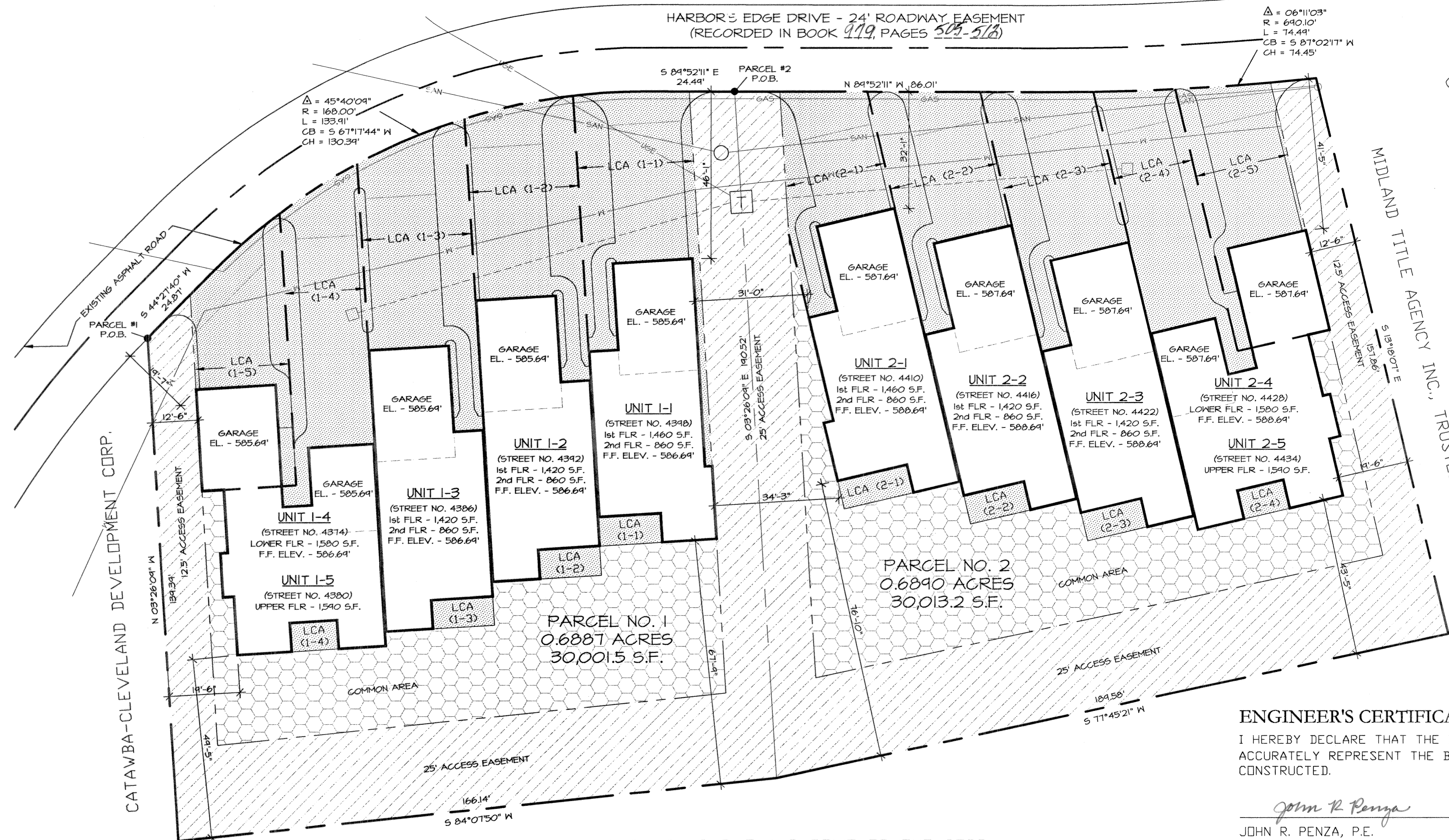
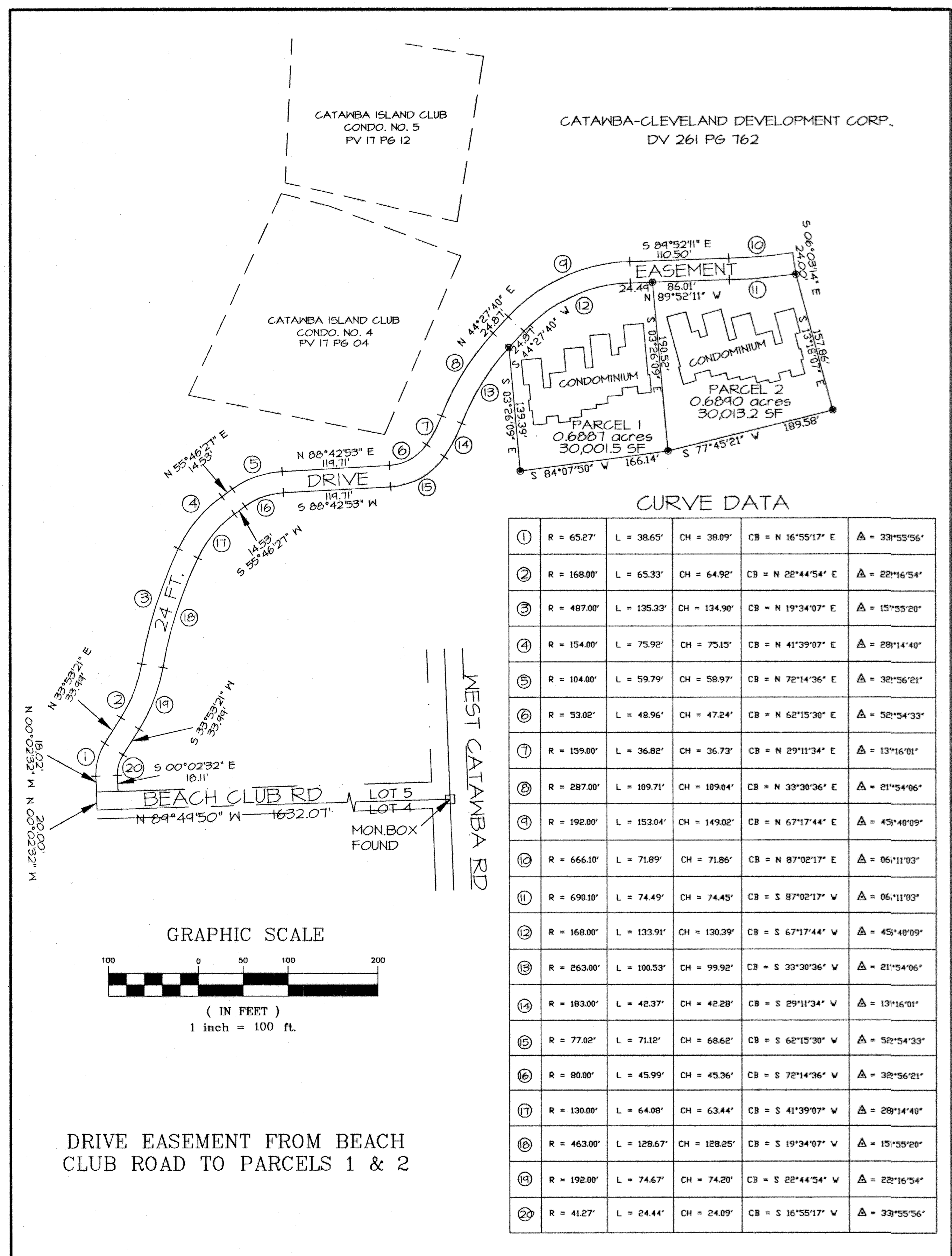
CONDO UNIT	1st FLOOR ELEV.	GARAGE ELEV.	CONDO UNIT	1st FLOOR ELEV.	GARAGE ELEV.
1-1	586.69'	585.69'	2-1	588.69'	587.69'
1-2	586.69'	585.69'	2-2	588.69'	587.69'
1-3	586.69'	585.69'	2-3	588.69'	587.69'
1-4	586.69'	585.69'	2-4	588.69'	587.69'
1-5	N/A	585.69'	2-5	N/A	587.69'

FLOOD PLAIN ELEVATION PER 'FEMA' = 578.00'

**HARBOR'S EDGE CONDOMINIUM NO. ONE**

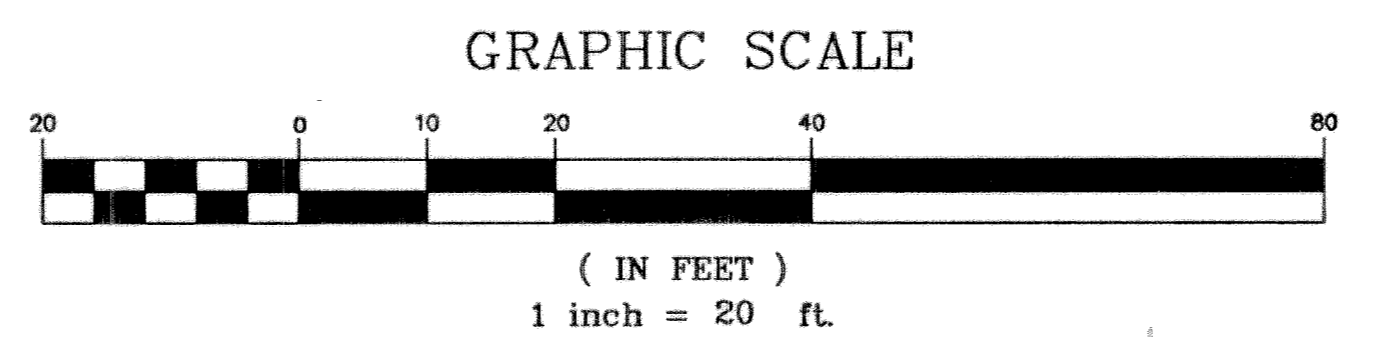
PART OF LOT 5, SECTION 3 OF THE WESTERN RESERVE TRACT, CATAWBA ISLAND TOWNSHIP, OTTAWA COUNTY, OHIO - 2003

CATAWBA-CLEVELAND DEVELOPMENT CORP.



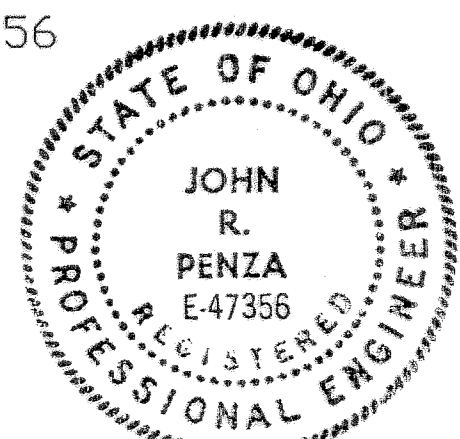
CATAWBA-CLEVELAND DEVELOPMENT CORP.

CATAWBA ISLAND CLUB GOLF COURSE



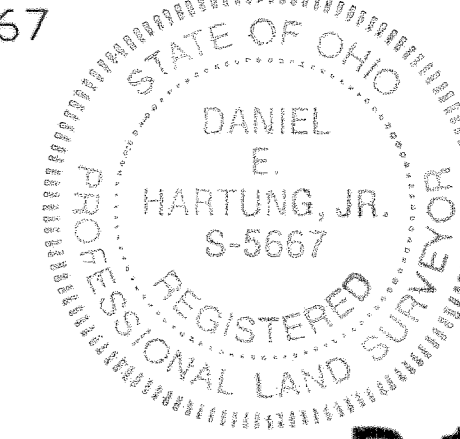
**ENGINEER'S CERTIFICATION**  
I HEREBY DECLARE THAT THE DRAWINGS ACCURATELY REPRESENT THE BUILDINGS AS CONSTRUCTED.

*John R. Penza* 1/13/04  
DATE  
JOHN R. PENZA, P.E.  
PROFESSIONAL ENGINEER #E-47356  
JANOTTA & HERNER, INC.  
309 MONROE STREET  
MONROEVILLE, OHIO 44847  
(419) 465-4611



**SURVEYOR'S CERTIFICATION**  
I HEREBY DECLARE THAT THE DRAWINGS ACCURATELY REPRESENT THE BUILDINGS AS CONSTRUCTED.

*Daniel E. Hartung, Jr.* 1/13/04  
DATE  
DANIEL E. HARTUNG, JR., P.S.  
PROFESSIONAL SURVEYOR #S-5667  
HARTUNG & ASSOCIATES  
ENGINEERS & SURVEYORS  
P.O. BOX 426  
421 WILLIAMS STREET  
HURON, OHIO 44839-0426  
(419) 433-4321



**OTTAWA COUNTY RECORDER**  
RECEIVED FOR RECORD THIS 14 DAY OF January, 2004, AT 2:58 P.M. AND RECORDED January 14, 2004, IN OTTAWA COUNTY PLAT RECORDS VOLUME 47, PAGES 29-39 AND FEES OF \$860.20 COLLECTED.  
*Virginia M. Park*  
OTTAWA COUNTY RECORDER