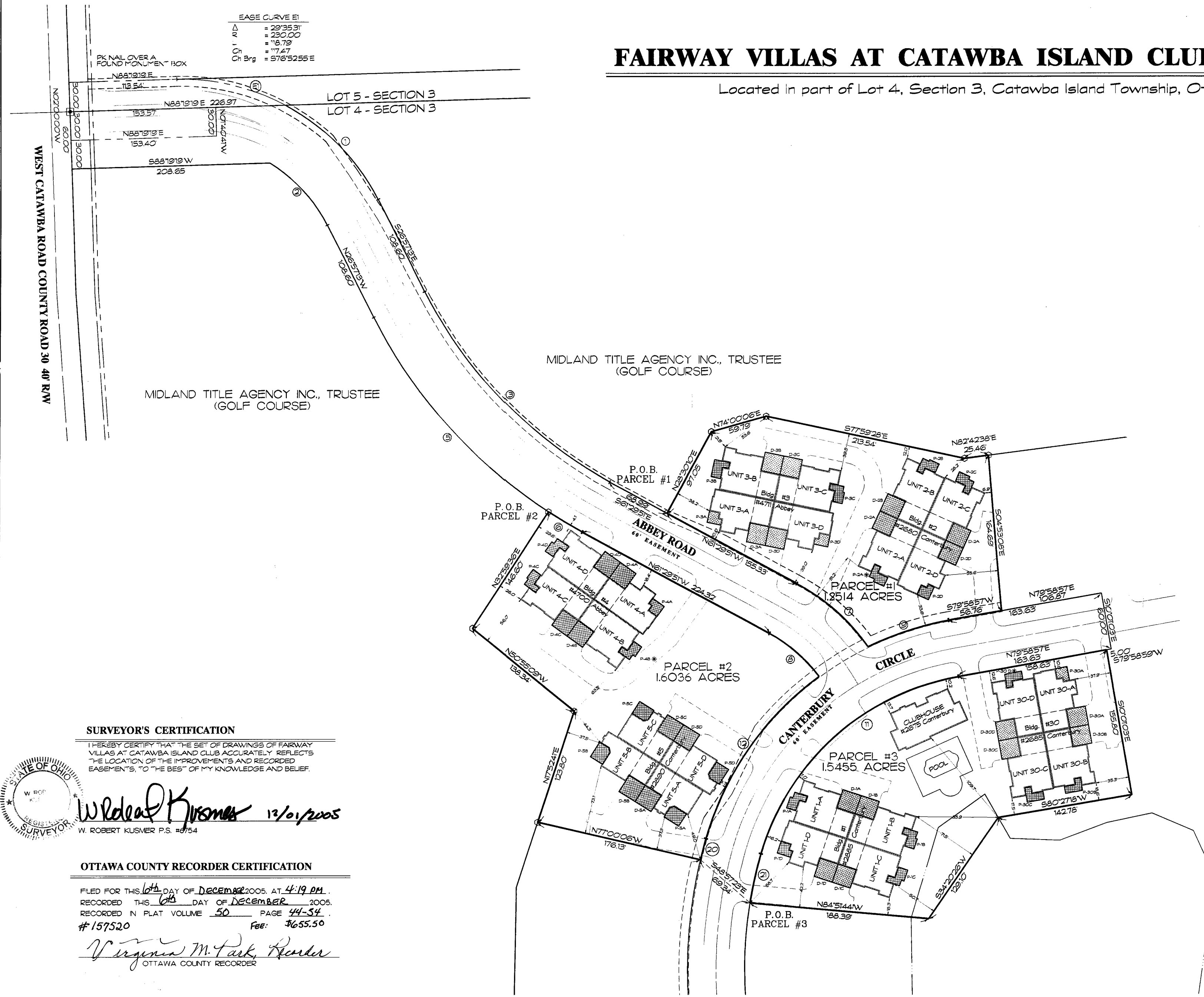


FAIRWAY VILLAS AT CATAWBA ISLAND CLUB CONDOMINIUM

Located in part of Lot 4, Section 3, Catawba Island Township, Ottawa County, Ohio.



EASE CURVE E1
 = 29°35'31"
 = 230.00
 = 18.79
 = 17.47
 S.C. Brg = 57°52'55"E

MIDLAND TITLE AGENCY INC., TRUSTEE
 (GOLF COURSE)

MIDLAND TITLE AGENCY INC., TRUSTEE
 (GOLF COURSE)

LIMITED COMMON ELEMENT - LCE
 (D = DRIVEWAY)
 (P = PATIO)
 * NOT IMPROVED

SEE ARCHITECT'S DRAWING FOR
 ACTUAL DIMENSIONS OF THE LCE

CURVE DATA					
NO.	ANGLE	RADIUS	ARC	CHORD	CHORD BRG.
1	35° 07' 57"	230.00	141.03	138.83	S 44° 31' 12" E
2	30° 59' 36"	166.59	90.11	89.02	N 42° 27' 07" W
3	34° 32' 36"	470.00	283.36	279.09	S 44° 13' 32" E
5	30° 03' 11"	530.00	278.00	274.62	N 41° 58' 48" W
6	4° 29' 27"	530.00	41.54	41.53	S 59° 15' 08" E
7	26° 21' 11"	220.00	101.19	100.30	N 48° 19' 15" W
8	24° 53' 32"	160.00	69.51	68.97	S 49° 03' 05" E
9	18° 52' 41"	322.00	89.23	88.95	S 72° 02' 36" W
11	64° 21' 28"	262.00	284.29	279.08	N 47° 48' 14" E
12	37° 45' 12"	322.00	210.17	208.35	S 34° 30' 07" W
20	02° 37' 35"	505.00	23.15	23.15	S 14° 18' 44" W
21	06° 49' 39"	445.00	53.03	53.00	N 12° 12' 42" E

LEGEND		
DESCRIPTION	SET	FOUND
MONUMENT BOX	⊙	⊙
CONCRETE MONUMENT	⊙	⊙
IRON ROD	○ 1/2"	● 3/4"
IRON PIPE	○	●
RAILROAD SPIKE	⊕	⊕

SURVEYOR'S CERTIFICATION
 I HEREBY CERTIFY THAT THE SET OF DRAWINGS OF FAIRWAY VILLAS AT CATAWBA ISLAND CLUB ACCURATELY REFLECTS THE LOCATION OF THE IMPROVEMENTS AND RECORDED EASEMENTS, TO THE BEST OF MY KNOWLEDGE AND BELIEF.

W. ROBERT KUSMER P.S. #8754
 12/01/2005

OTTAWA COUNTY RECORDER CERTIFICATION

FILED FOR THIS 6th DAY OF DECEMBER 2005, AT 4:19 PM.
 RECORDED THIS 6th DAY OF DECEMBER 2005.
 RECORDED IN PLAT VOLUME 50 PAGE 44-54.
 #157520 Fee: \$655.50

Virginia M. Park, Recorder
 OTTAWA COUNTY RECORDER

ANY INFORMATION OR DATA ON THIS DRAWING IS NOT INTENDED TO BE SUITABLE FOR RELIANCE BY ANY PERSON, FIRM, OR CORPORATION ON EXTENSIONS OF THIS PROJECT OR FOR ANY USE ON ANY OTHER PROJECT. ANY RELIANCE WITHOUT WRITTEN VERIFICATION AND ADAPTATION BY THE ENGINEER, ARCHITECT, OR SURVEYOR FOR THE SPECIFIC PURPOSE INTENDED WILL BE AT THE USER'S SOLE RISK AND WITHOUT LIABILITY OR LEGAL EXPOSURE TO THE ENGINEER, ARCHITECT, OR SURVEYOR. REV. OF ANY INFORMATION OR DATA IS... DRAWING BY ANY PERSON, FIRM, OR CORPORATION IS A VIOLATION OF THE AGREEMENT AND IS SUBJECT TO LITIGATION BY ENGINEER, ARCHITECT, OR SURVEYOR. NOT PUBLIC. ALL RIGHTS RESERVED.

KUSMER & ASSOCIATES, INC.
 Surveyors
 Engineers
 Architects

622 WEST STATE STREET
 CLEVELAND, OHIO 43102
 FAX: 216-332-7056
 E-MAIL: kusmer@cwakus.com

Fairway Villas at Catawba Island Club
 LOCATED IN PART OF LOT 4, SECTION 3, CATAWBA ISLAND TOWNSHIP, OTTAWA COUNTY, OHIO

DRAWN BY: [] CHECK BY: []
 NO DATE BY: [] REVISION BY: []

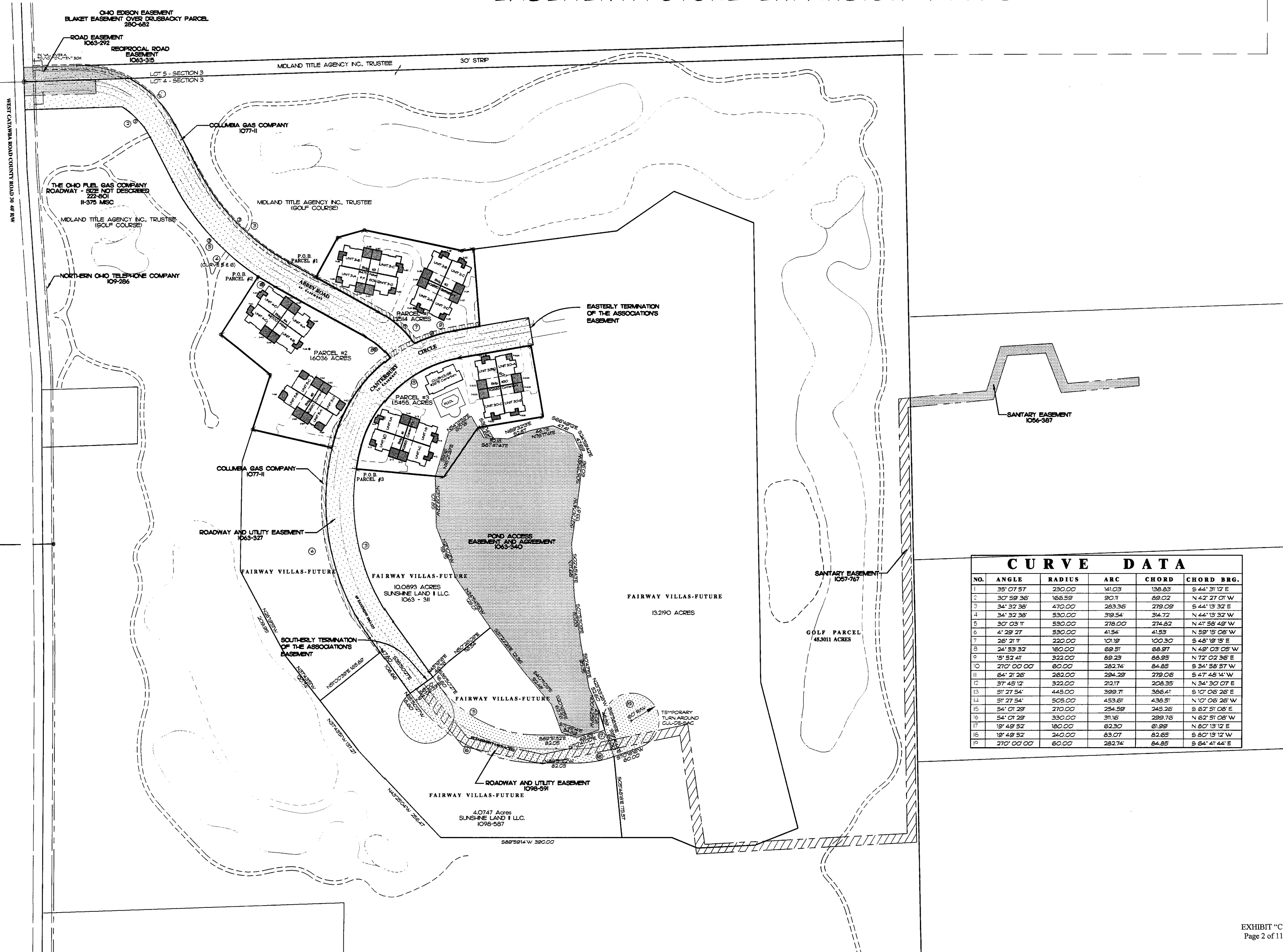
SCALE: 1" = 50'

1 of 10
 Rev - 0

05414C1

FAIRWAY VILLAS AT CATAWBA ISLAND CLUB CONDOMINIUM

Located in part of Lot 4, Section 3, Catawba Island Township, Ottawa County, Ohio.
EASEMENT/FUTURE EXPANSION AREAS

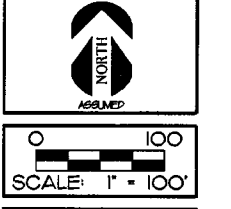


CURVE DATA					
NO.	ANGLE	RADIUS	ARC	CHORD	CHORD BRG.
1	35° 07' 57"	230.00	141.03	136.83	S 44° 31' 12" E
2	30° 59' 36"	166.59	90.11	69.02	N 42° 27' 07" W
3	34° 32' 38"	470.00	283.36	279.09	S 44° 13' 32" E
4	34° 32' 38"	530.00	319.54	314.72	N 44° 13' 32" W
5	30° 03' 11"	530.00	278.00	274.62	N 41° 58' 49" W
6	4° 29' 27"	530.00	41.54	41.55	N 59° 18' 08" W
7	28° 21' 11"	220.00	121.19	100.30	S 48° 18' 19" E
8	24° 53' 32"	160.00	69.51	68.97	N 49° 03' 02" W
9	18° 52' 41"	322.00	89.23	88.25	N 72° 02' 36" E
10	270° 00' 00"	60.00	282.74	84.85	S 34° 58' 57" W
11	64° 21' 26"	262.00	294.29	279.06	S 47° 48' 14" W
12	37° 45' 12"	322.00	212.17	208.35	N 34° 30' 07" E
13	51° 27' 54"	445.00	399.71	366.41	S 10° 06' 26" E
14	51° 27' 54"	505.00	453.61	436.51	N 10° 06' 26" W
15	54° 01' 29"	270.00	254.59	245.26	S 62° 51' 08" E
16	54° 01' 29"	330.00	311.16	299.76	N 62° 51' 08" W
17	19° 49' 52"	180.00	62.30	61.99	N 60° 13' 12" E
18	19° 49' 52"	240.00	83.07	82.65	S 60° 13' 12" W
19	270° 00' 00"	60.00	282.74	84.85	S 64° 41' 44" E

KUSMER & ASSOCIATES, INC.
 Engineers & Architects
 622 WEST STATE STREET
 FREMONT, OHIO 43420
 PHONE: 419-332-7056
 FAX: 419-332-7056
 E-MAIL: kuser@aol.com

**Fairway Villas at
Catawba Island Club**
 LOCATED IN PART OF LOT 4, SECTION 3,
 CATAWBA ISLAND TOWNSHIP, OTTAWA COUNTY, OHIO.

DRAWN BY	WHS	CHECK	WHS
DATE		REVISION	



2 of 10
Rev - 0
 PRINT: 11-28-2005
 05414C1

INFORMATION OR DATA ON THIS DRAWING IS NOT INTENDED TO BE SUITABLE FOR RELIANCE BY ANY PERSON, FIRM, OR CORPORATION OR ANY OTHERS ON EXTENSIONS OF THIS PROJECT OR FOR ANY USE ON ANY OTHER PROJECT. ANY RELIANCE WITHOUT THE VERIFICATION AND ADAPTATION BY THE ENGINEER, ARCHITECT, OR SURVEYOR FOR THE SPECIFIC PURPOSE INTENDED WILL BE AT THE USER'S SOLE RISK AND WITHOUT LIABILITY OR LEGAL EXPOSURE TO THE ENGINEER, ARCHITECT, OR SURVEYOR. IF ANY INFORMATION OR DATA ON THIS DRAWING BY ANY PERSON, FIRM, OR CORPORATION IS A VIOLATION OF THE AGREEMENT AND IS SUBJECT TO LITIGATION BY ENGINEER, ARCHITECT, OR SURVEYOR. NOT PUBLISH ALL RIGHTS RESERVED.