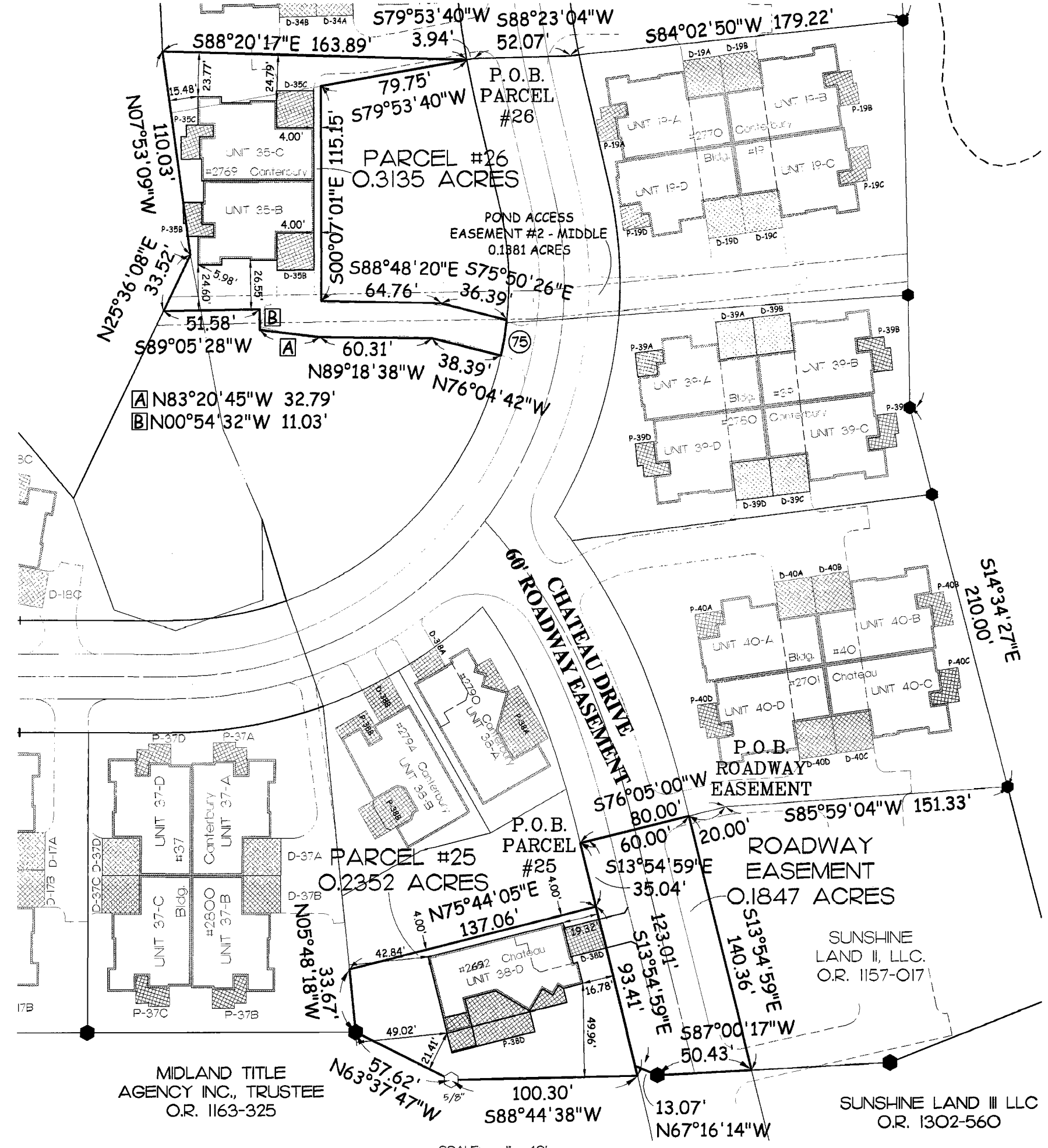
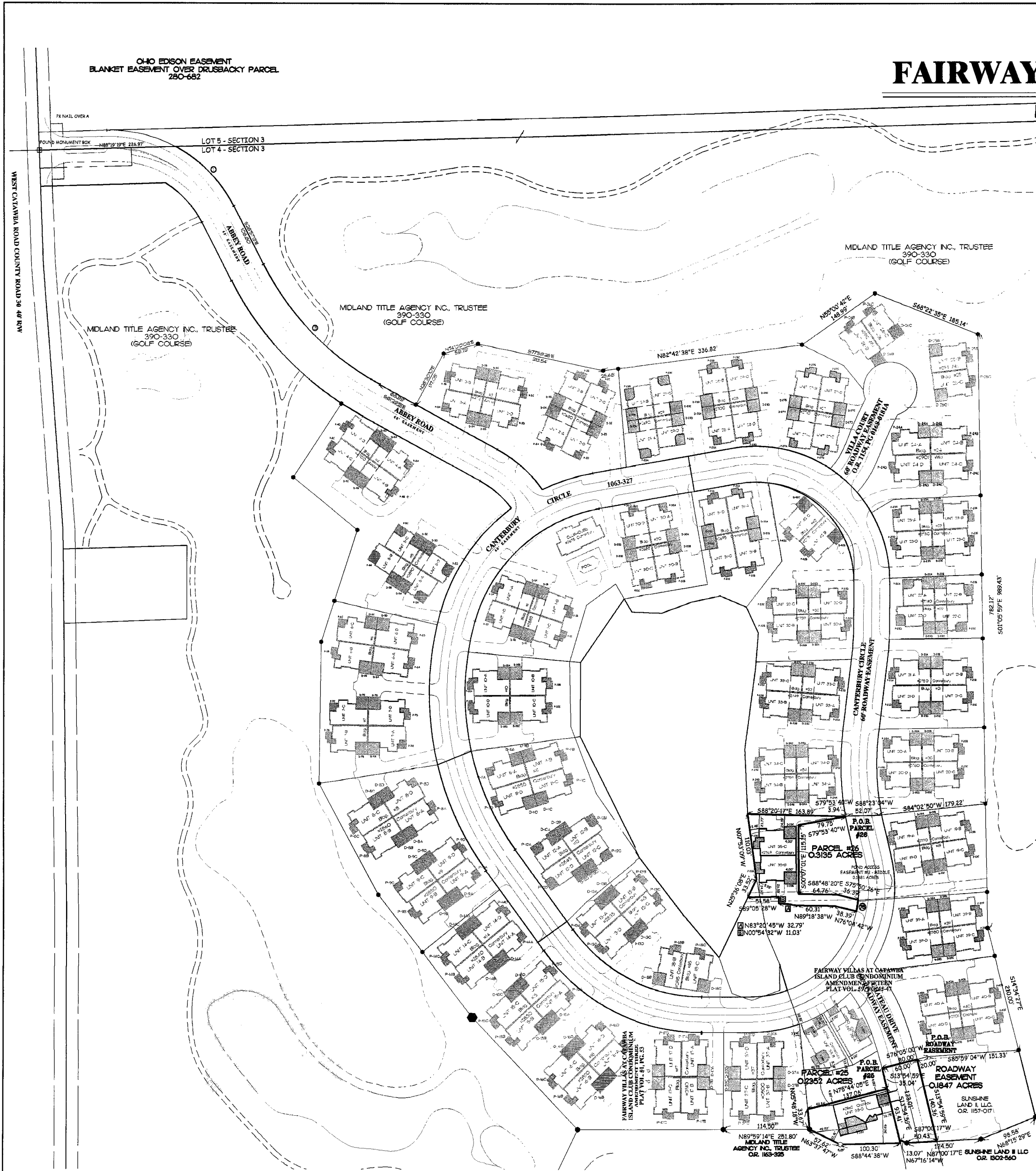


AMENDMENT 17 FAIRWAY VILLAS AT CATAWBA ISLAND CLUB CONDOMINIUM

Vol 60 pg 31

Located in part of Lot 4, Section 3, Catawba Island Township, Ottawa County, Ohio.



LEGEND

DESCRIPTION	SET	FOUND
MONUMENT BOX	⊙	⊠
CONCRETE MONUMENT	⊙	⊠
IRON ROD	○ 1/2"	● 3/4"
IRON PIPE	○	●
RAILROAD SPIKE	⊕	⊕

CURVE DATA

NO.	ANGLE	RADIUS	ARC	CHORD	CHORD BRG.
1	35° 07' 57"	230.00'	141.03'	138.83'	S 44° 31' 12" E
3	34° 32' 38"	470.00'	283.36'	279.09'	S 44° 13' 32" E
75	06° 08' 30"	180.00'	19.29'	19.29'	S 09° 10' 21" W

SURVEYOR'S CERTIFICATION

I HEREBY CERTIFY THAT THE SET OF DRAWINGS OF FAIRWAY VILLAS AT CATAWBA ISLAND CLUB ACCURATELY REFLECTS THE LOCATION OF THE IMPROVEMENTS AND RECORDED EASEMENTS, TO THE BEST OF MY KNOWLEDGE AND BELIEF.

W. Robert Kusmer
W. ROBERT KUSMER P.S. #6754

OTTAWA COUNTY RECORDER CERTIFICATION

FILED FOR THIS 1st DAY OF May 2012 AT 3:41 p.m.
RECORDED THIS 1st DAY OF May 2012
RECORDED IN PLAT VOLUME 60 PAGE 31-34
201200220535 \$312.30

Virginia M. Park
OTTAWA COUNTY RECORDER

KUSMER & ASSOCIATES, INC.
Engineers & Architects

Fairway Villas at Catawba Island Club
LOCATED IN PART OF LOT 4 SECTION 3 CATAWBA ISLAND TOWNSHIP, OTTAWA COUNTY, OHIO.

NO.	DATE	BY	REVISION	CHECK

SCALE: 1" = 100'

1 of 4

Rev - 0

4/27/2012

1 2 4 1 4 S I

ANY INFORMATION OR DATA ON THIS DRAWING IS NOT INTENDED TO BE SUITABLE FOR REUSE BY ANY PERSON, FIRM, OR CORPORATION OR ANY OTHERS ON EXTENSIONS OF THIS PROJECT OR FOR ANY USE ON ANY OTHER PROJECT. ANY REUSE WITHOUT WRITTEN VERIFICATION AND ADAPTATION BY THE ENGINEER, ARCHITECT, OR SURVEYOR FOR THE SPECIFIC PURPOSE INTENDED WILL BE AT THE USER'S SOLE RISK AND WITHOUT LIABILITY OR LEGAL EXPOSURE TO THE ENGINEER, ARCHITECT, OR SURVEYOR. REUSE OF ANY INFORMATION OR DATA ON THIS DRAWING BY ANY PERSON, FIRM, OR CORPORATION IS A VIOLATION OF THE AGREEMENT AND IS SUBJECT TO LITIGATION BY ENGINEER, ARCHITECT, OR SURVEYOR. NOT PUBLISHED. ALL RIGHTS RESERVED.