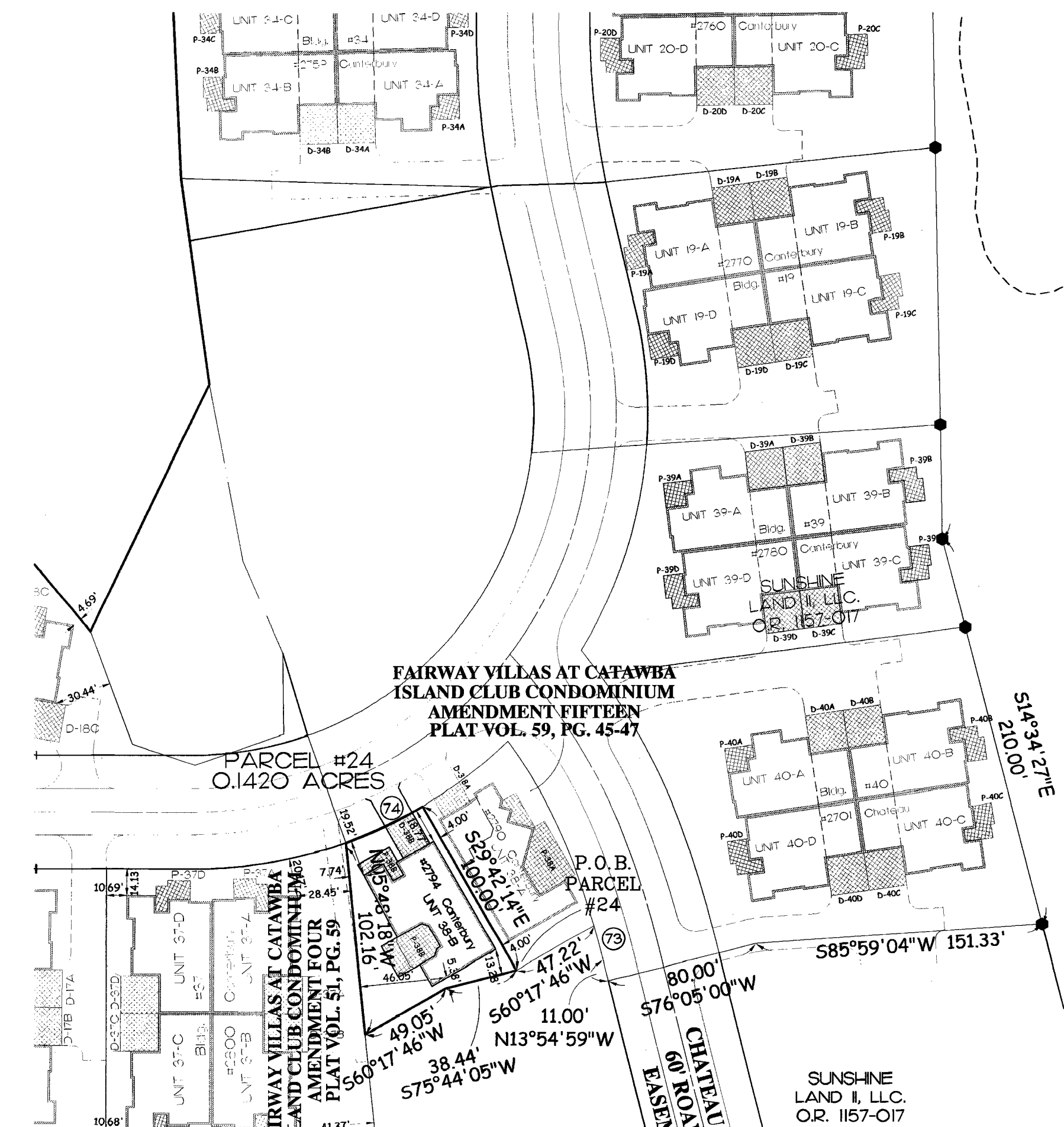
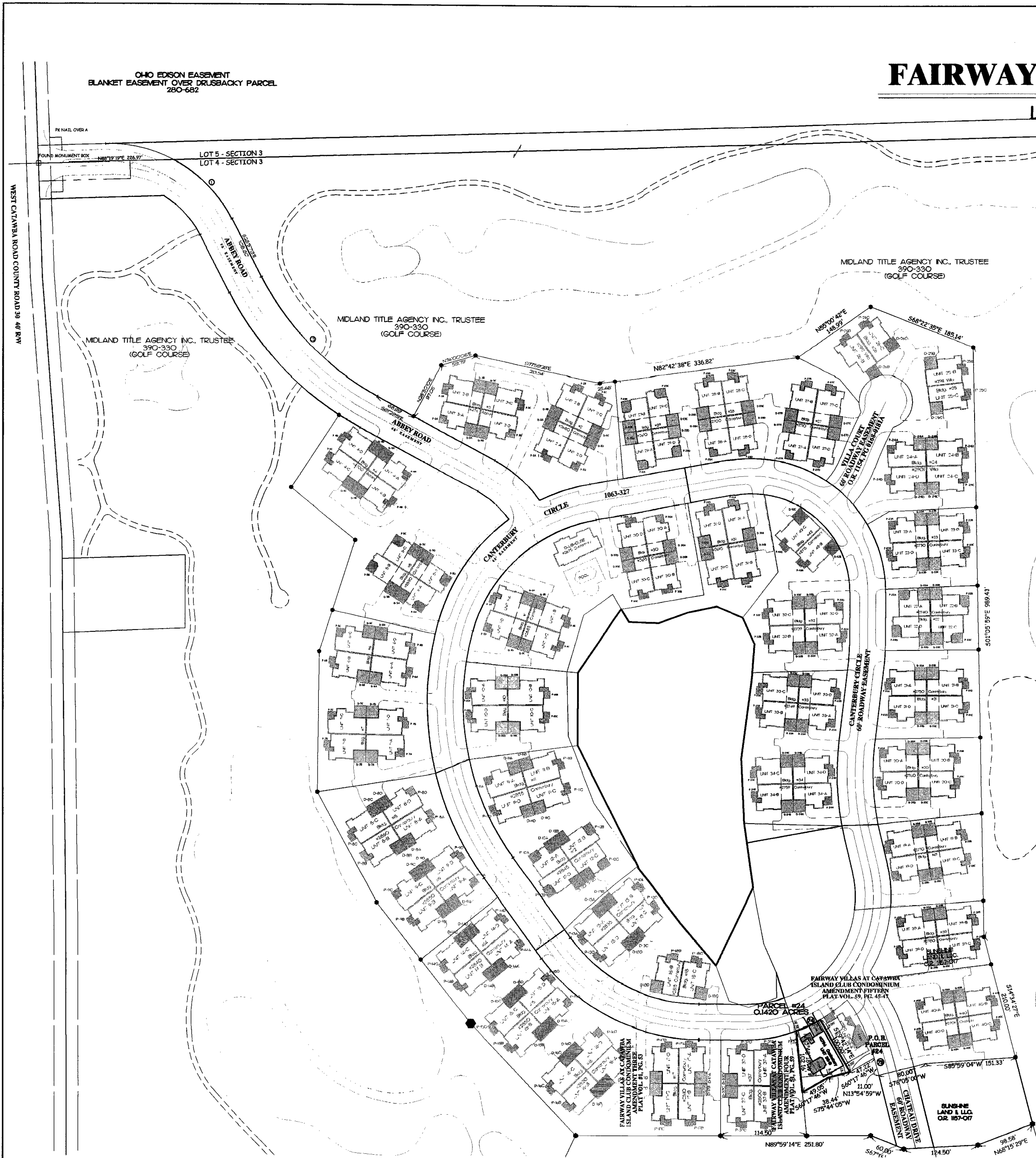


AMENDMENT 16 FAIRWAY VILLAS AT CATAWBA ISLAND CLUB CONDOMINIUM

Located in part of Lot 4, Section 3, Catawba Island Township, Ottawa County, Ohio.



LEGEND

DESCRIPTION	SET	FOUND
MONUMENT BOX	⊗	⊙
CONCRETE MONUMENT	⊙	⊙
IRON ROD	○ 1/2"	● 3/4"
IRON PIPE	○	●
RAILROAD SPIKE	⊕	⊕

CURVE DATA

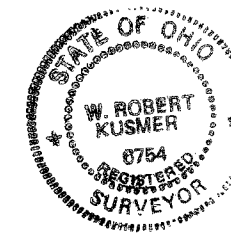
NO.	ANGLE	RADIUS	ARC	CHORD	CHORD BRG.
1	35° 07' 57"	230.00'	141.03'	138.83'	S 44° 31' 12" E
3	34° 32' 38"	470.00'	283.36'	279.09'	S 44° 13' 32" E
62	06° 30' 27"	535.59'	60.83'	60.80'	N 17° 10' 13" W
63	15° 37' 25"	330.00'	89.99'	89.71'	N 28° 14' 09" W
64	06° 30' 27"	475.59'	54.02'	53.99'	N 17° 10' 13" W
66	24° 15' 44"	240.00'	101.63'	100.87'	S 58° 10' 31" W

CURVE DATA

NO.	ANGLE	RADIUS	ARC	CHORD	CHORD BRG.
67	63° 40' 07"	180.00'	200.02'	189.89'	N 38° 28' 19" E
68	27° 16' 23"	240.00'	114.24'	113.17'	N 17° 36' 35" E
69	02° 45' 33"	330.00'	15.89'	15.89'	N 37° 25' 38" W
70	18° 22' 58"	330.00'	105.88'	105.42'	S 29° 36' 56" E
73	02° 16' 33"	475.59'	18.89'	18.89'	N 15° 03' 16" W
74	10° 43' 31"	240.00'	44.93'	44.86'	N 64° 56' 42" E

LIMITED COMMON ELEMENT - LCE
(D = DRIVEWAY)
(P = PATIO)
+ NOT IMPROVED

SEE ARCHITECT'S DRAWING FOR ACTUAL DIMENSIONS OF THE LCE



SURVEYOR'S CERTIFICATION
I HEREBY CERTIFY THAT THE SET OF DRAWINGS OF FAIRWAY VILLAS AT CATAWBA ISLAND CLUB ACCURATELY REFLECTS THE LOCATION OF THE IMPROVEMENTS AND RECORDED EASEMENTS, TO THE BEST OF MY KNOWLEDGE AND BELIEF.

W. Robert Kusmer 10/14/2011
W. ROBERT KUSMER P.S. #6754

OTTAWA COUNTY RECORDER CERTIFICATION

FILED FOR THIS 24th DAY OF October 2011 AT 11:26 am.
RECORDED THIS 24th DAY OF October 2011
RECORDED IN PLAT VOLUME 60 PAGE 6-B
201100215591 \$ 218.50

Virginia M. Park by *Gullie M. Cord* deputy recorder
OTTAWA COUNTY RECORDER

ANY INFORMATION OR DATA ON THIS DRAWING IS NOT INTENDED TO BE SUITABLE FOR REUSE BY ANY PERSON, FIRM, OR CORPORATION OR ANY OTHERS ON EXTENSIONS OF THIS PROJECT OR FOR ANY USE ON ANY OTHER PROJECT. ANY REUSE WITHOUT WRITTEN VERIFICATION AND ADAPTATION BY THE ENGINEER, ARCHITECT, OR SURVEYOR FOR THE SPECIFIC PURPOSE INTENDED WILL BE AT THE USER'S SOLE RISK AND WITHOUT LIABILITY OR LEGAL EXPOSURE TO THE ENGINEER, ARCHITECT, OR SURVEYOR. REUSE OF ANY INFORMATION OR DATA ON THIS DRAWING BY ANY PERSON, FIRM, OR CORPORATION IS A VIOLATION OF THE AGREEMENT AND IS SUBJECT TO LITIGATION BY ENGINEER, ARCHITECT, OR SURVEYOR. NOT PUBLIC. ALL RIGHTS RESERVED.

KUSMER & ASSOCIATES, INC.
 622 WEST STATE STREET
 CATAWBA, OHIO 44824
 PHONE: 419-332-7056
 FAX: 419-332-7056
 E-MAIL: kumar@kumers.net

Surveyors
 Engineers
 Architects

Fairway Villas at
 Catawba Island Club
 LOCATED IN PART OF LOT 4, SECTION 3,
 CATAWBA ISLAND TOWNSHIP, OTTAWA COUNTY, OHIO.

CHECK	DATE
REVISION	DATE

DRAWN BY: _____
 INCH DATE: _____

SCALE: 1" = 100'
 1 of 3
 Rev - 0
 PRINT: 10/19/2011
 1141452