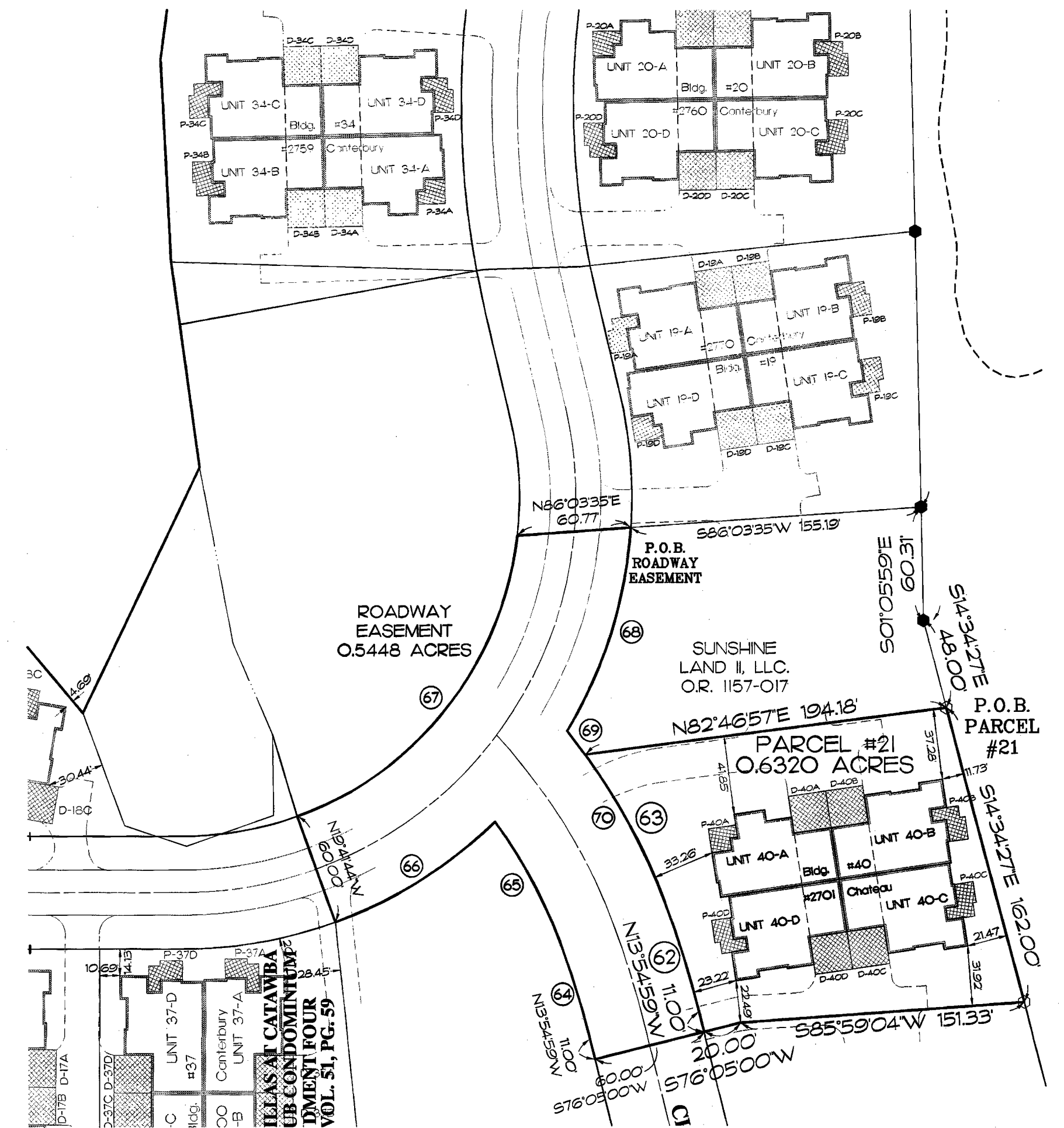
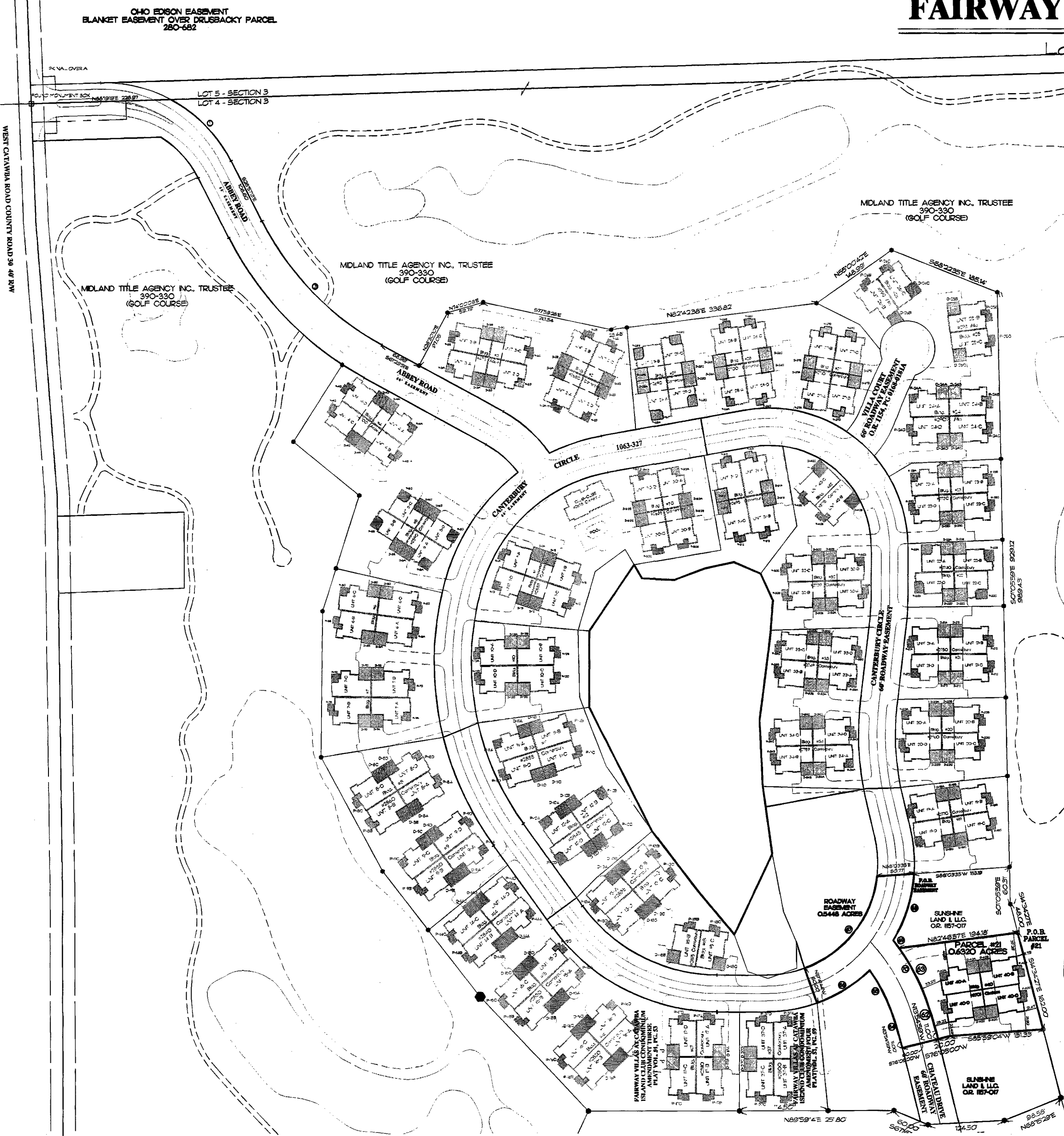
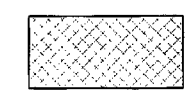
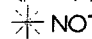


AMENDMENT 12 VOL 57 PG 39 FAIRWAY VILLAS AT CATAWBA ISLAND CLUB CONDOMINIUM

Located in part of Lot 4, Section 3, Catawba Island Township, Ottawa County, Ohio.



SCALE: 1" = 40'

 LIMITED COMMON ELEMENT - LCE
 (D = DRIVEWAY)
 (P = PATIO)
 NOT IMPROVED

SEE ARCHITECT'S DRAWING FOR ACTUAL DIMENSIONS OF THE LCE

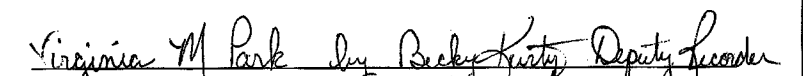
SURVEYOR'S CERTIFICATION



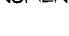







I HEREBY CERTIFY THAT THE SET OF DRAWINGS OF FAIRWAY VILLAS AT CATAWBA ISLAND CLUB ACCURATELY REFLECTS THE LOCATION OF THE IMPROVEMENTS AND RECORDED EASEMENTS, TO THE BEST OF MY KNOWLEDGE AND BELIEF.


 W. ROBERT KUSMER P.S. #6754

OTTAWA COUNTY RECORDER CERTIFICATION

FILED FOR THIS 5TH DAY OF May 2009. AT 2:53 pm.
 RECORDED THIS 5TH DAY OF May 2009.
 RECORDED IN PLAT VOLUME 57 PAGE 29-41.
 Document # 193458 & 21970


 VIRGINIA M. PARK, DEPUTY RECORDER

LEGEND		
DESCRIPTION	SET	FOUND
MONUMENT BOX		
CONCRETE MONUMENT		
IRON ROD		
IRON PIPE		
RAILROAD SPIKE		

CURVE DATA					
NO.	ANGLE	RADIUS	ARC	CHORD	CHORD BRG.
1	35° 07' 57"	230.00'	141.03'	138.83'	S 44° 31' 12" E
3	34° 32' 38"	470.00'	283.36'	279.09'	S 44° 13' 32" E
62	06° 30' 27"	555.59'	60.83'	60.80'	N 17° 10' 13" W
63	15° 37' 25"	330.00'	89.99'	89.71'	N 28° 14' 09" W
64	06° 30' 27"	475.59'	54.02'	53.99'	N 17° 10' 13" W

CURVE DATA					
NO.	ANGLE	RADIUS	ARC	CHORD	CHORD BRG.
65	15° 31' 55"	270.00'	73.19'	72.97'	N 28° 11' 24" W
66	24° 15' 44"	240.00'	101.63'	100.87'	S 58° 10' 31" W
67	63° 40' 07"	180.00'	200.02'	189.89'	N 38° 28' 19" E
68	27° 16' 23"	240.00'	114.24'	113.17'	S 17° 36' 35" W
69	02° 45' 33"	330.00'	15.89'	15.89'	N 37° 25' 38" W
70	18° 22' 58"	330.00'	105.88'	105.42'	S 29° 36' 56" E

ANY INFORMATION OR DATA ON THIS DRAWING IS NOT INTENDED TO BE SUITABLE FOR RELIANCE BY ANY PERSON, FIRM, OR CORPORATION OR ANY OTHERS ON EITHER SIDE OF THIS PROJECT OR FOR ANY USE ON ANY OTHER PROJECT. ANY RELIANCE WITHOUT WRITTEN IDENTIFICATION AND PERMISSION BY THE ENGINEER, ARCHITECT, OR SURVEYOR FOR THE SPECIFIC PURPOSE INTENDED WILL BE AT THE USER'S SOLE RISK AND WITHOUT LIABILITY OR LEGAL EXPOSURE TO THE ENGINEER, ARCHITECT, OR SURVEYOR. RELIANCE ON ANY INFORMATION OR DATA ON THIS DRAWING BY ANY PERSON, FIRM, OR CORPORATION IS A VIOLATION OF THE AGREEMENT AND IS SUBJECT TO LITIGATION BY ENGINEER, ARCHITECT, OR SURVEYOR. NOT FOR REPRODUCTION. ALL RIGHTS RESERVED.

KUSMER & ASSOCIATES, INC.
 Engineers
 Architects
 622 WEST STATE STREET
 CATAWBA, OHIO 43420
 PHONE 419-352-1027
 FAX 419-352-1027
 E-MAIL kusa@kusa.com

**Fairway Villas at
Catawba Island Club**
 LOCATED IN PART OF LOT 4, SECTION 3,
 CATAWBA ISLAND TOWNSHIP, OTTAWA COUNTY, OHIO.

NO.	DATE	BY	REVISION	CHECK



SCALE: 1" = 100'
1 of 3
Rev - 0
 PRINT 4/20/2009
 05414C1