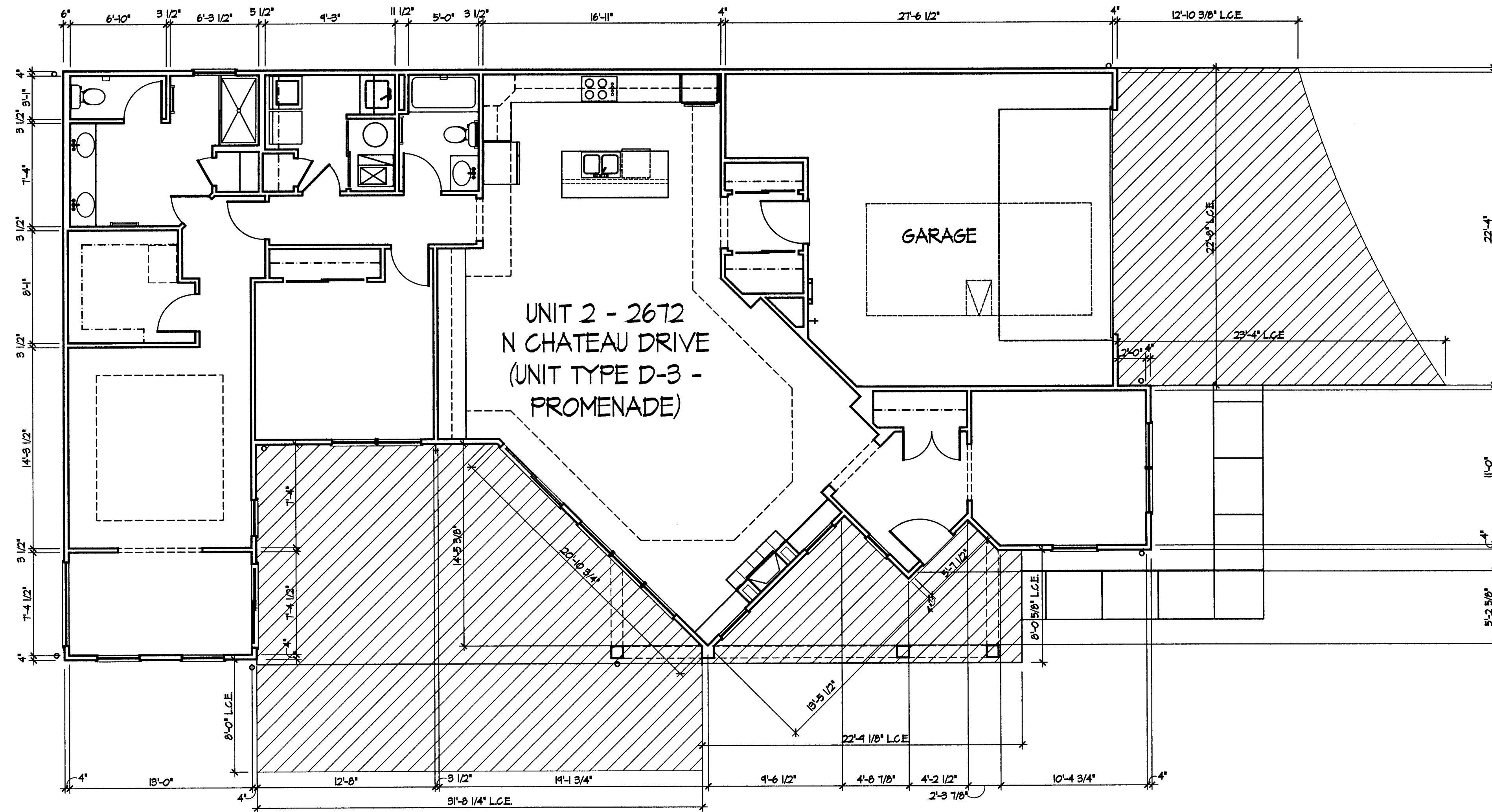


DEAN A. WENZ  
ARCHITECTS

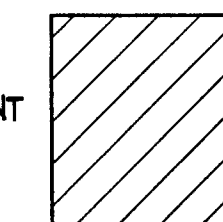
2463 E. MAIN STREET  
BEXLEY, OHIO 43209  
(614) 239-6868  
FAX (614) 239-9868

Fairway Estates at Catawba Island Club  
Condominium  
Sixth Amendment



UNIT 2 - First Floor Plan

L.C.E. = LIMITED  
COMMON ELEMENT

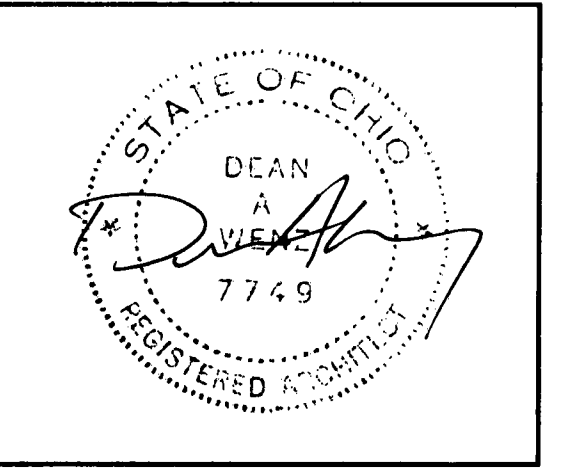


I certify that this drawing, consisting of 6 sheets, accurately shows each building of FAIRWAY ESTATES AT CATAWBA ISLAND CLUB, as constructed with respect to the property shown on this drawing, for the sole purpose of complying with ORC 1301.071

By: *Dean A. Wenz* Date: 6/5/2018  
Dean A. Wenz - Registered Architect No. 762-04-07144

Architect Project Number  
2015-051A

Sheet Number  
3 of 10



DEAN A. WENZ  
ARCHITECTS

2463 E. MAIN STREET  
BEXLEY, OHIO 43209  
(614) 239-6868  
FAX (614) 239-9868

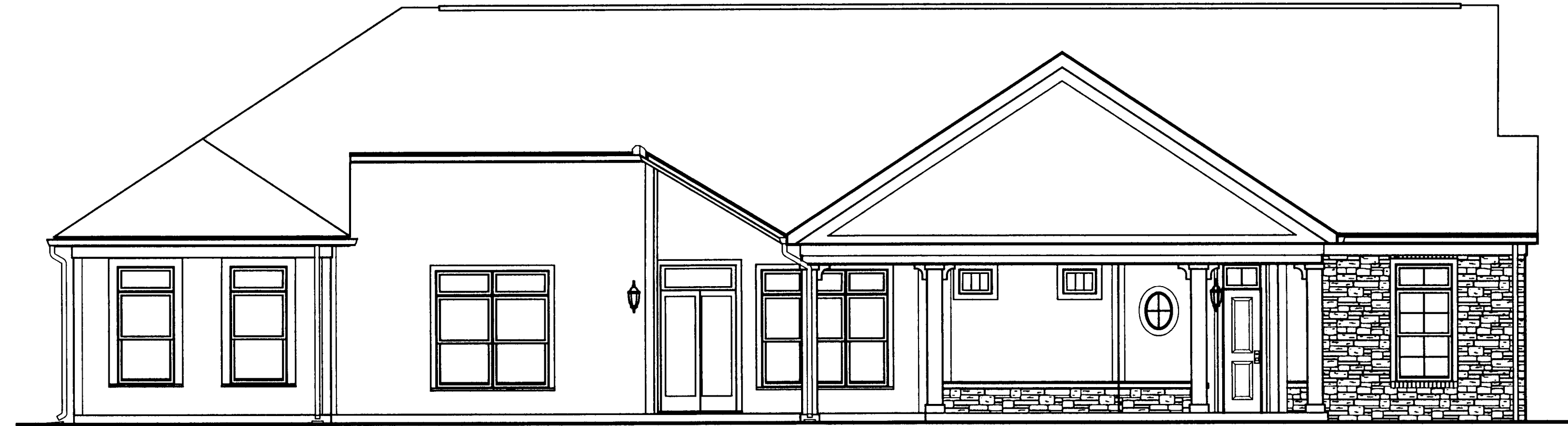
Fairway Estates at Catawba Island Club  
Condominium  
Sixth Amendment

- ATTIC CEILING (HIGH POINT)  
613.76'
- CEILING (HIGH POINT)  
605.46'
- CEILING (LOW POINT)  
604.46'
- FINISH FLOOR  
545.46'

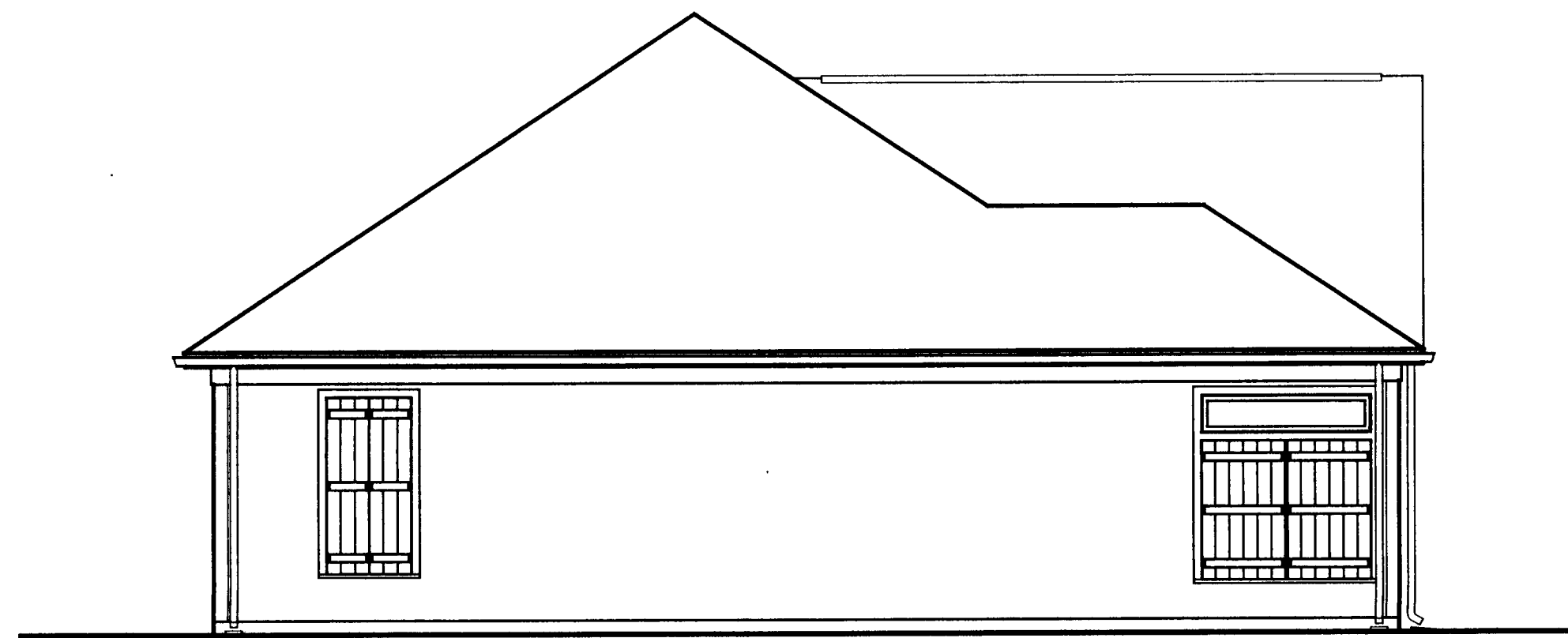


EAST ELEVATION

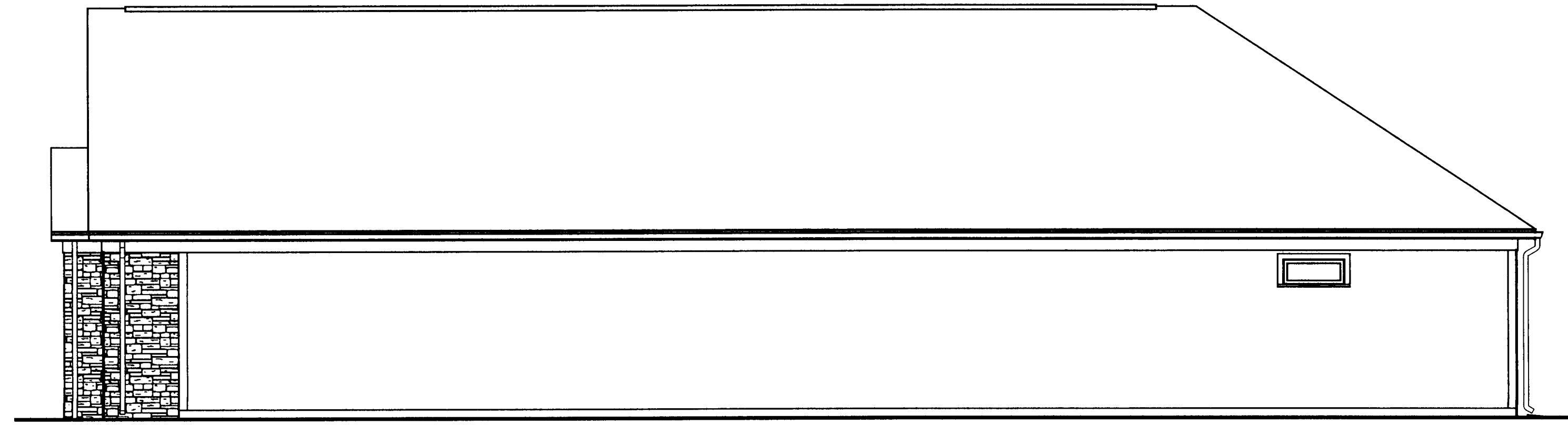
UNIT 2 - 2672  
N CHATEAU DRIVE (UNIT TYPE D-3  
- PROMENADE)



SOUTH ELEVATION

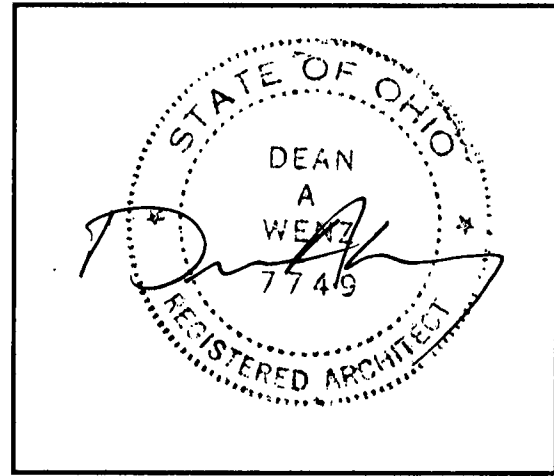


WEST ELEVATION



NORTH ELEVATION

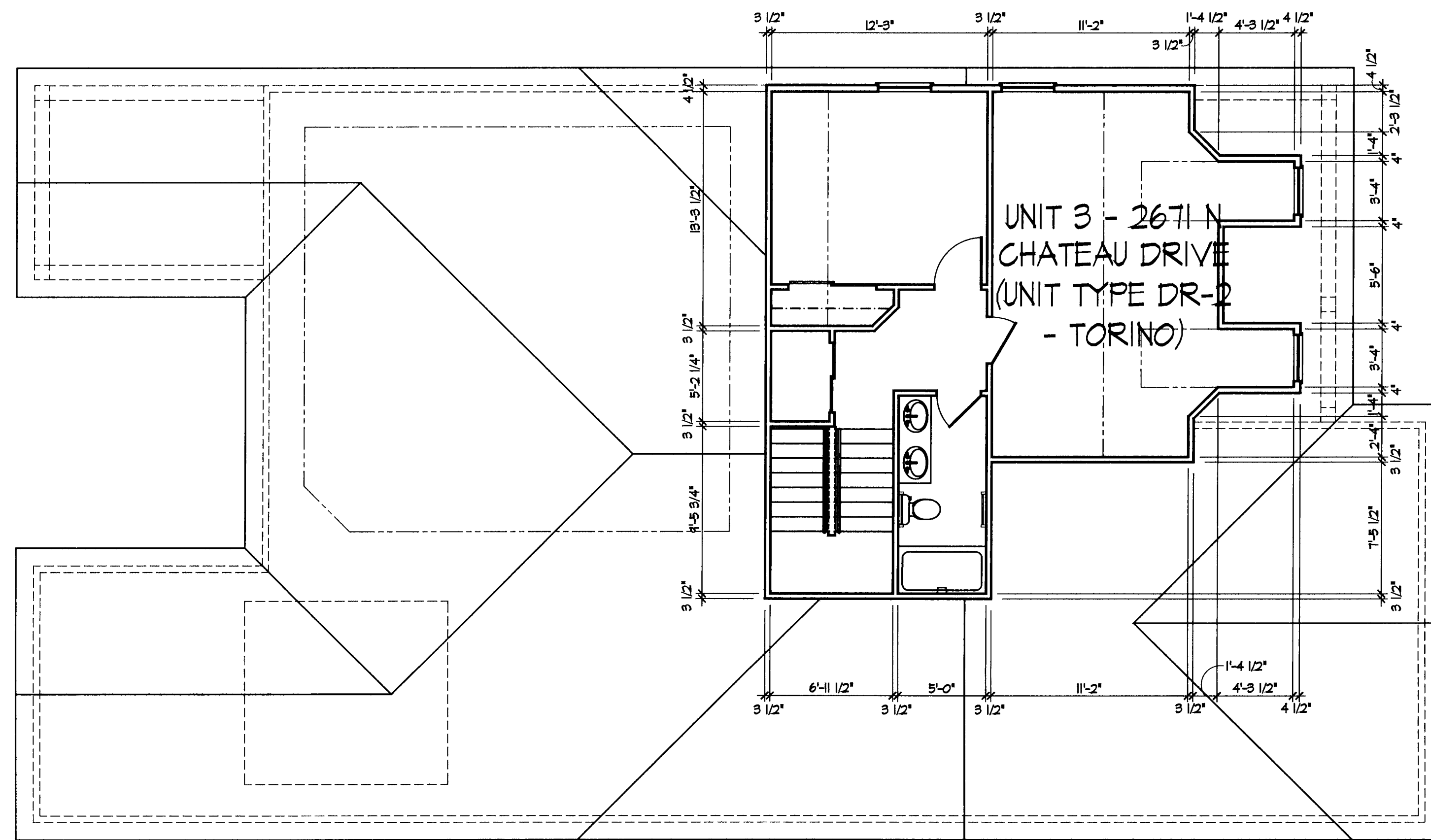
UNIT 2 - Elevations



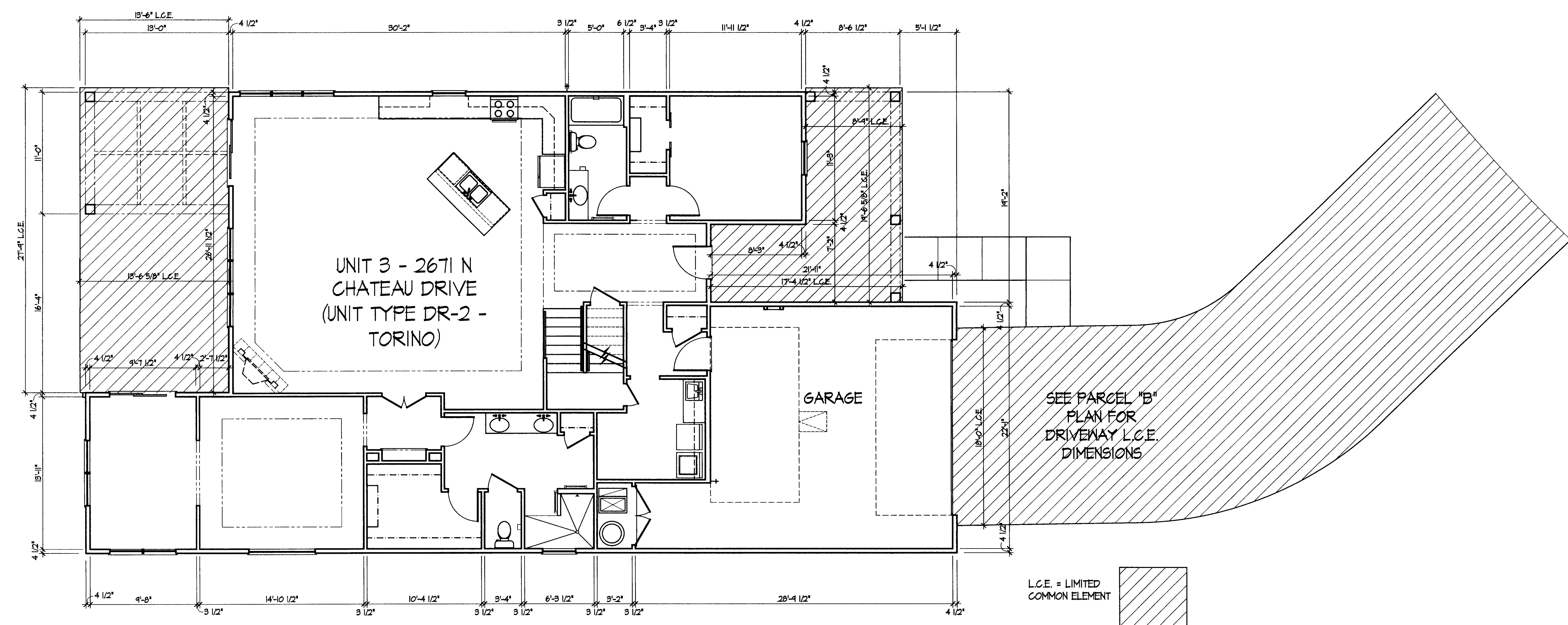
DEAN A. WENZ  
ARCHITECTS

2463 E. MAIN STREET  
BEXLEY, OHIO 43209  
(614) 239-6868  
FAX (614) 239-9868

Fairway Estates at Catawba Island Club  
Condominium  
Sixth Amendment



UNIT 3 - Second Floor Plan

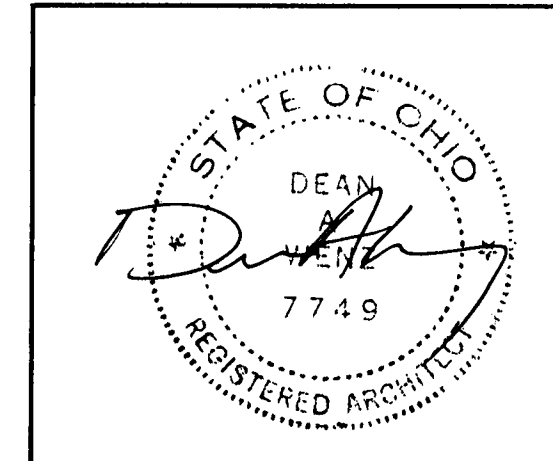


UNIT 3 - First Floor Plan

L.C.E. = LIMITED COMMON ELEMENT

Architect Project Number  
2015-051A

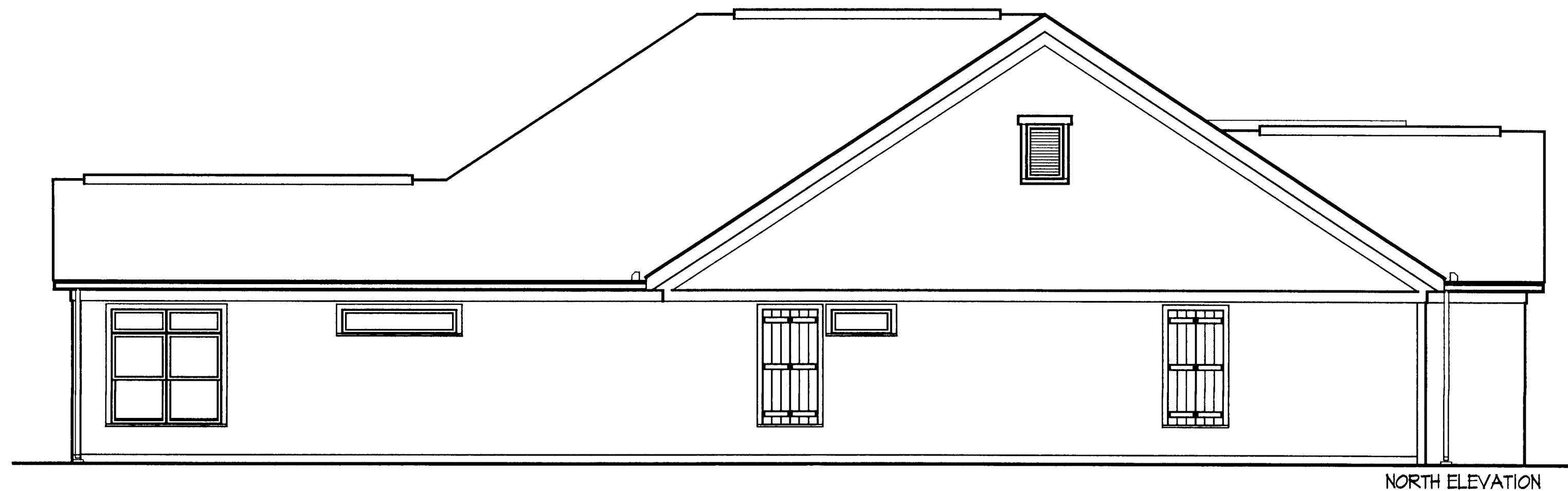
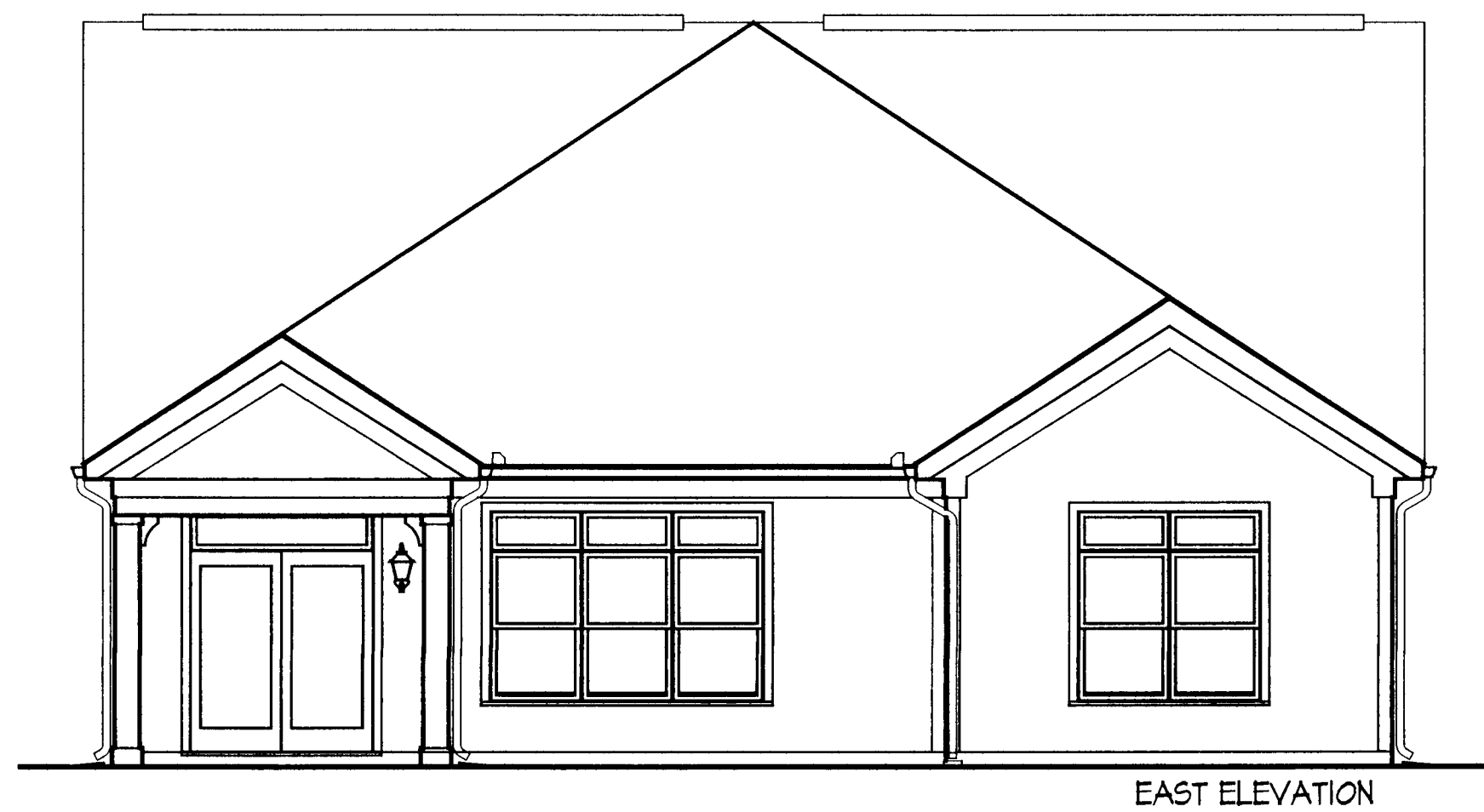
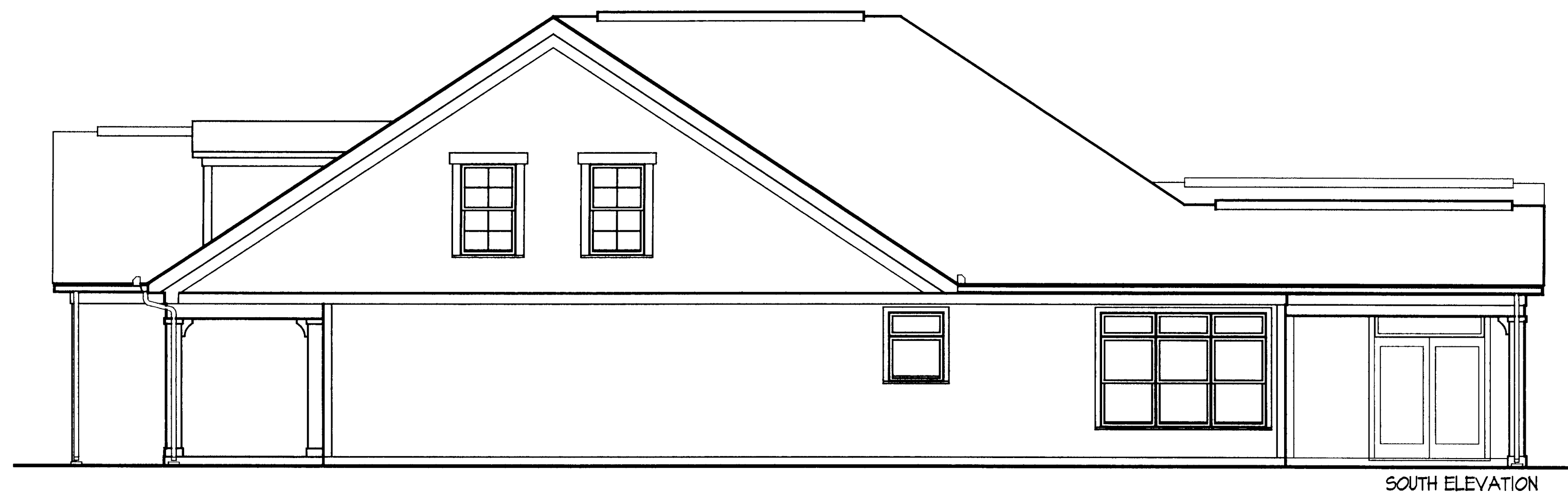
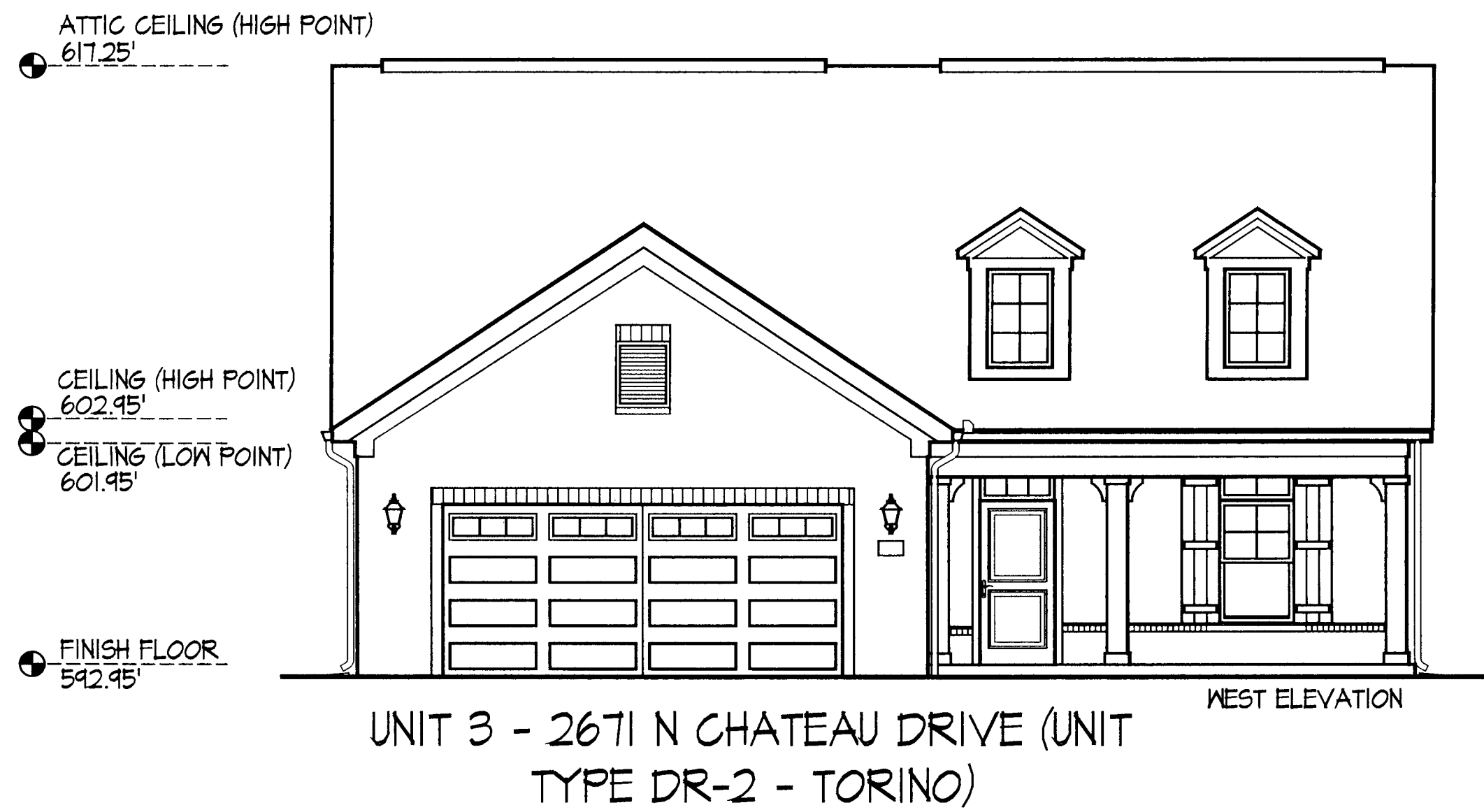
Sheet Number  
5 of 10



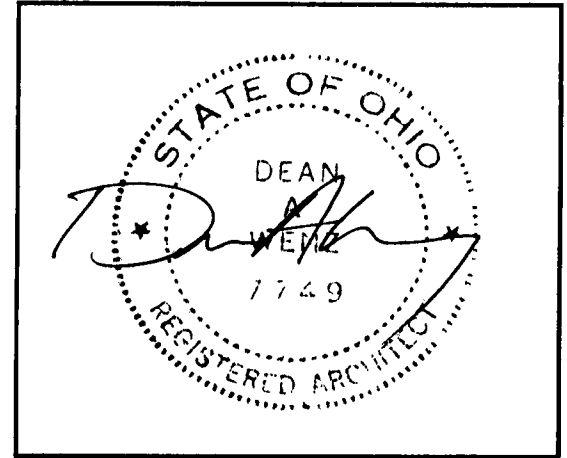
DEAN A. WENZ  
ARCHITECTS

2463 E. MAIN STREET  
BEXLEY, OHIO 43209  
(614) 239-6868  
FAX (614) 239-9868

Fairway Estates at Catawba Island Club  
Condominium  
Sixth Amendment



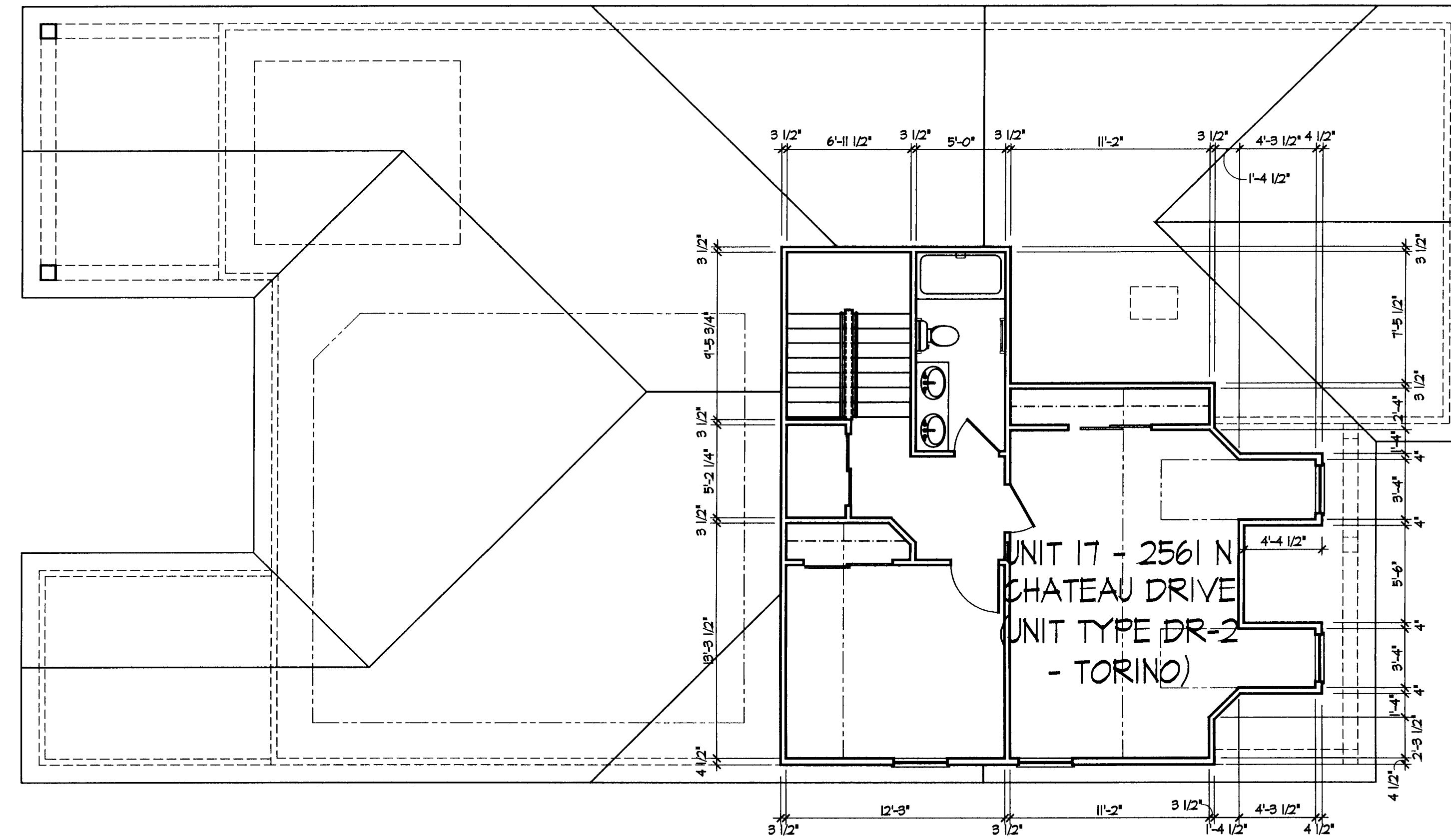
UNIT 3 - Elevations



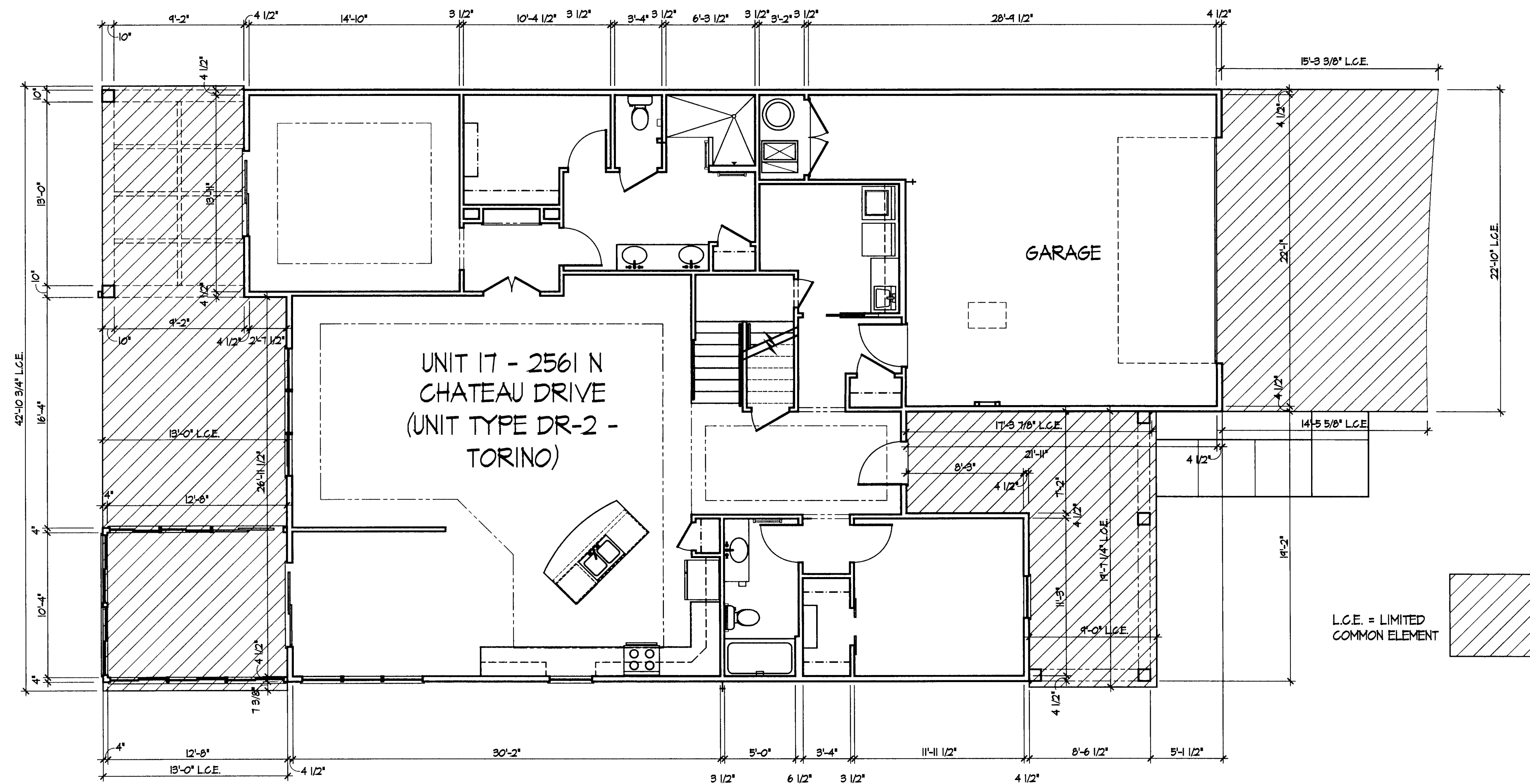
DEAN A. WENZ  
ARCHITECTS

2463 E. MAIN STREET  
BEXLEY, OHIO 43209  
(614) 239-6868  
FAX (614) 239-9868

Fairway Estates at Catawba Island Club  
Condominium  
Sixth Amendment



UNIT 17 - Second Floor Plan

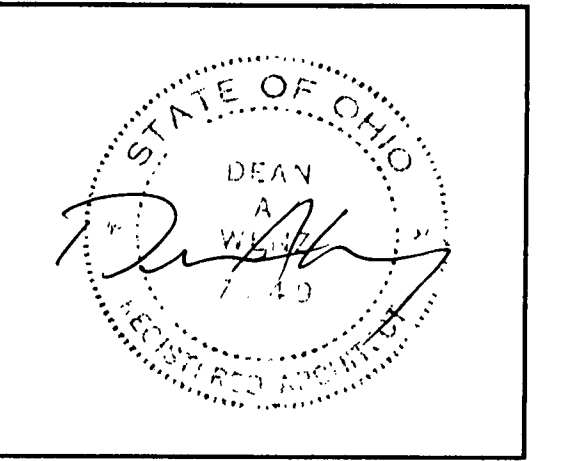


UNIT 17 - First Floor Plan

L.C.E. = LIMITED  
COMMON ELEMENT

Architect Project Number  
2015-051A

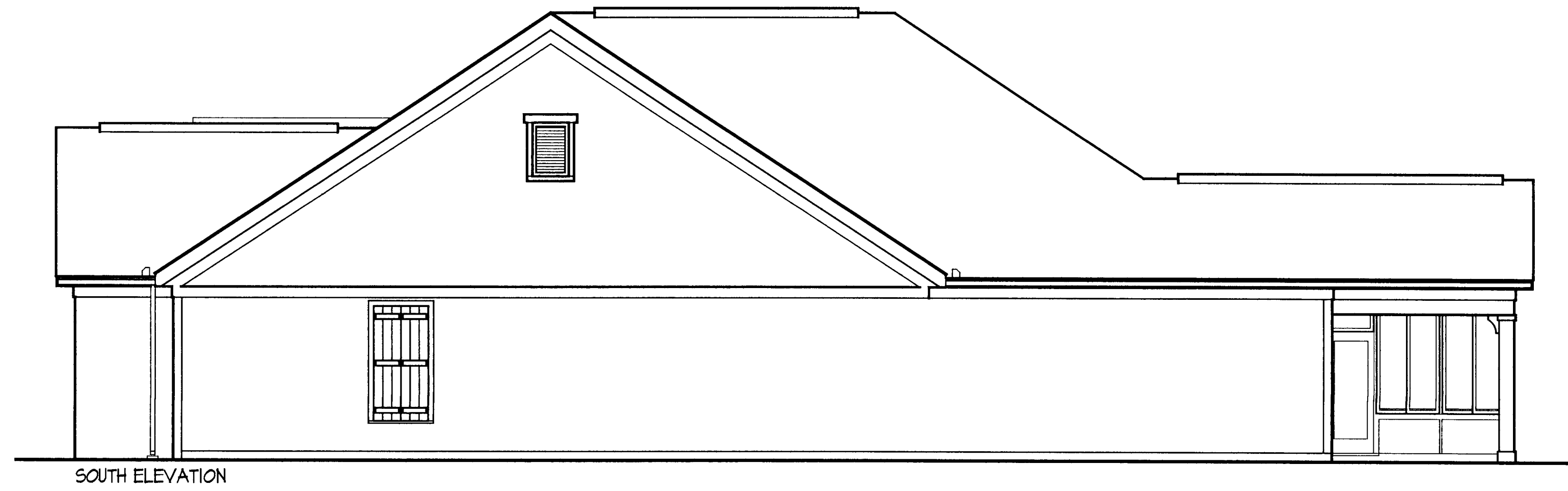
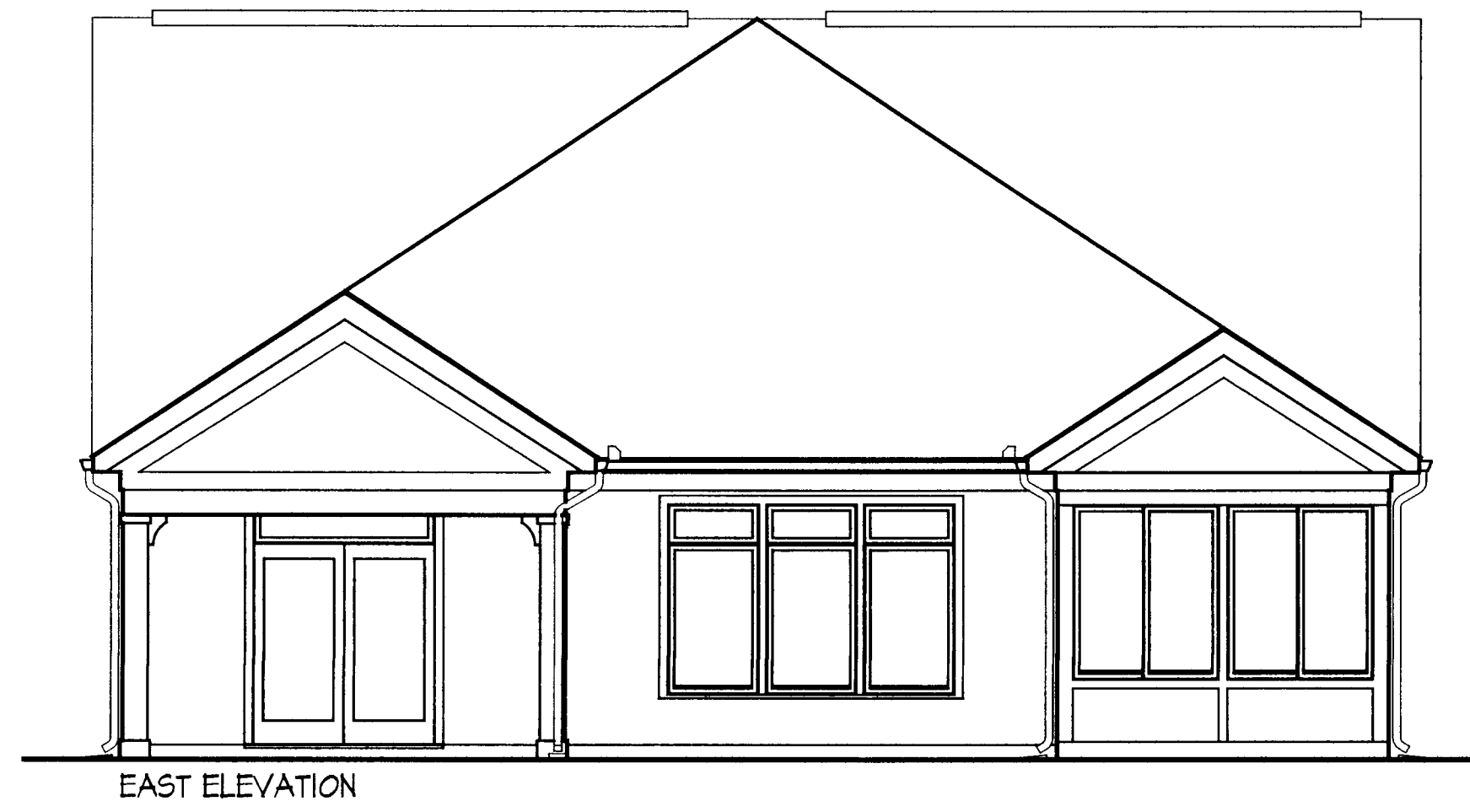
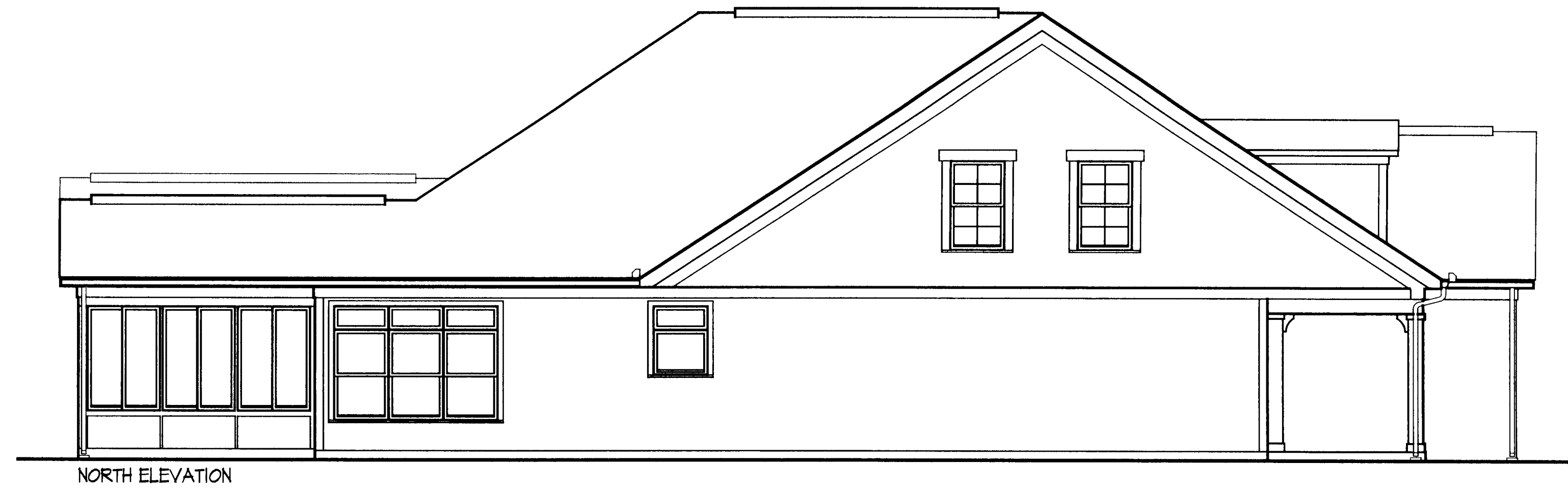
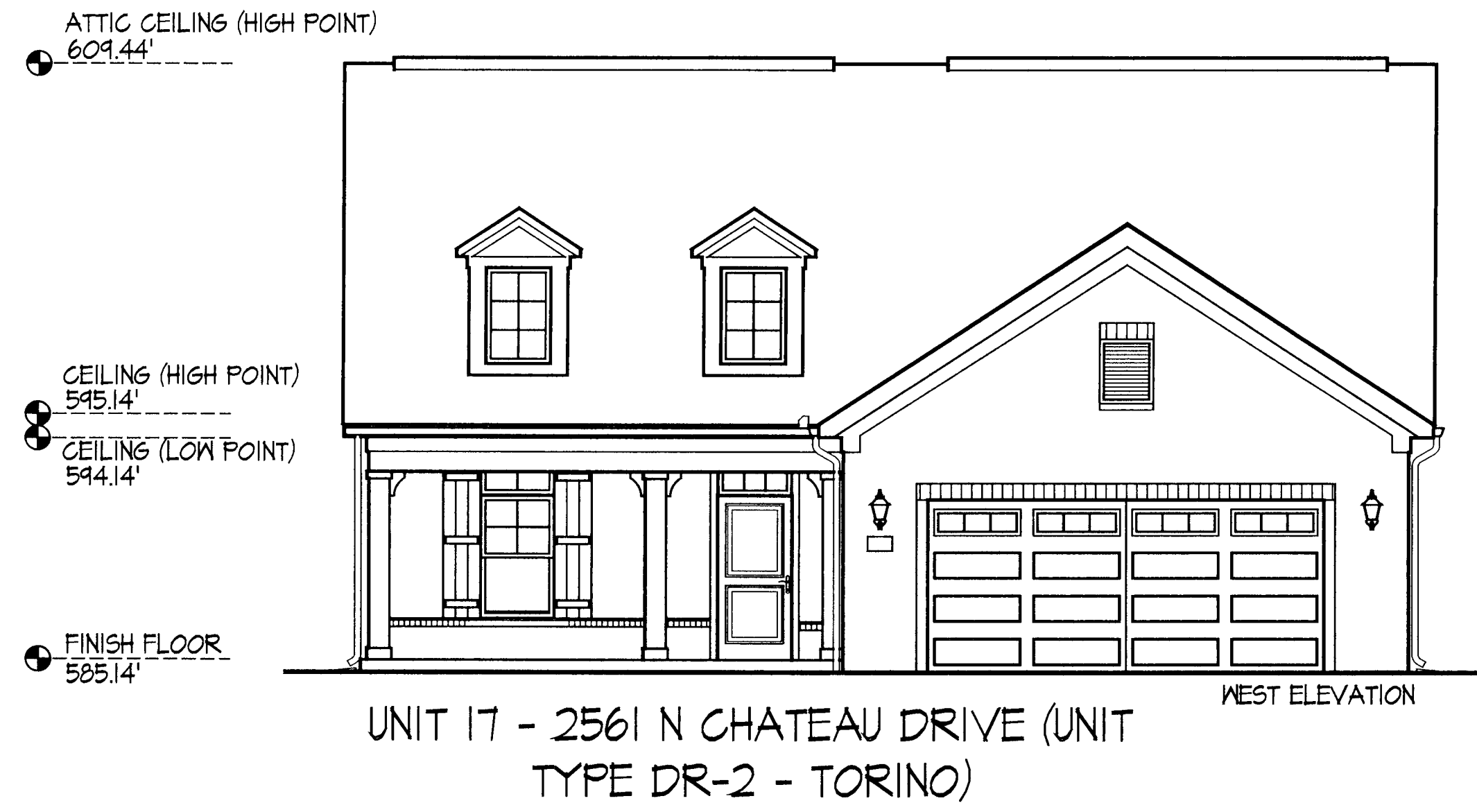
Sheet Number  
7 of 10



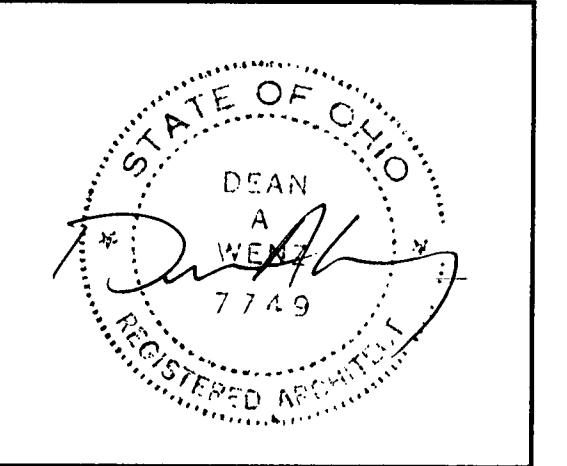
DEAN A. WENZ  
ARCHITECTS

2463 E. MAIN STREET  
BEXLEY, OHIO 43209  
(614) 239-6868  
FAX (614) 239-9868

Fairway Estates at Catawba Island Club  
Condominium  
Sixth Amendment



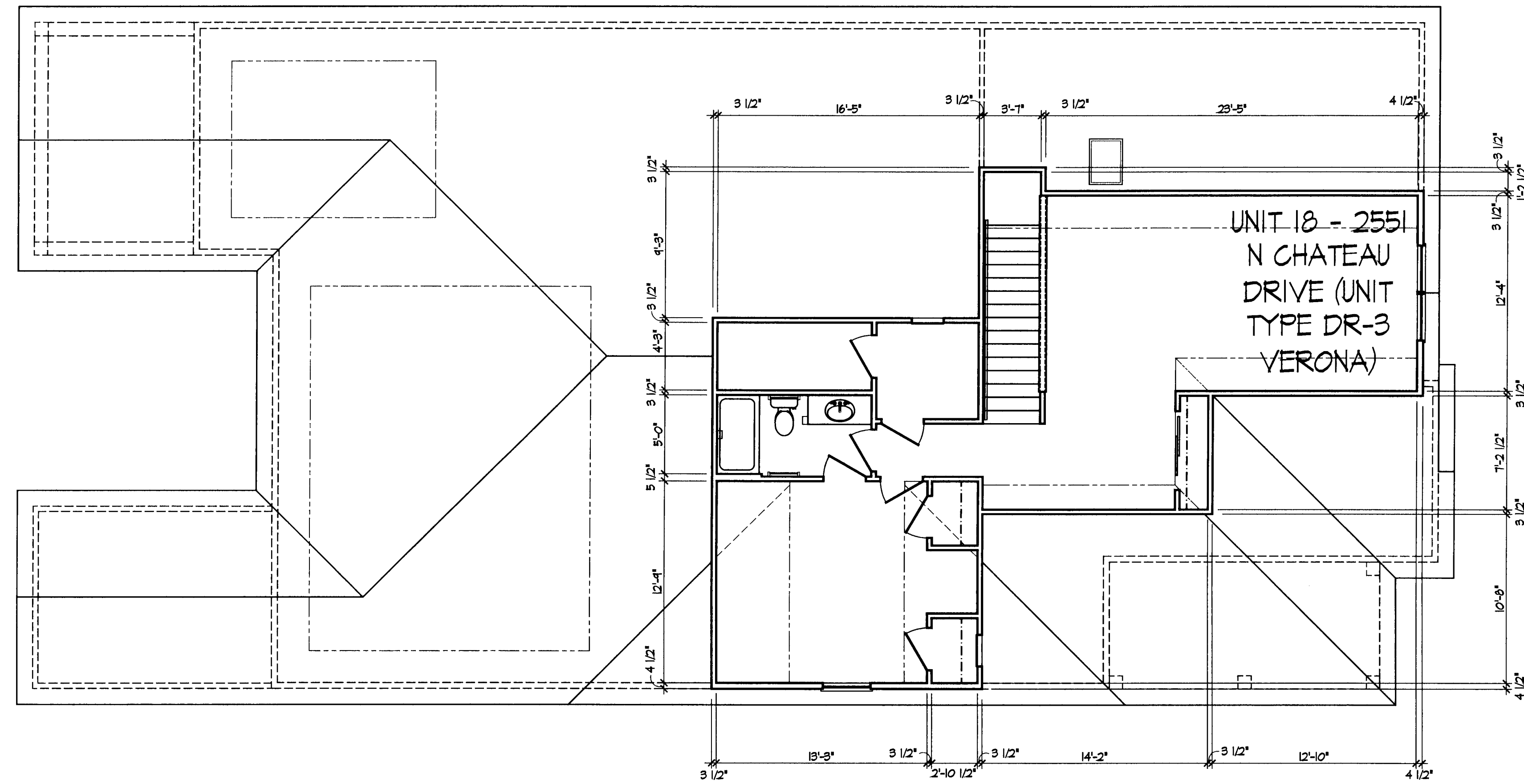
UNIT 17 - Elevations



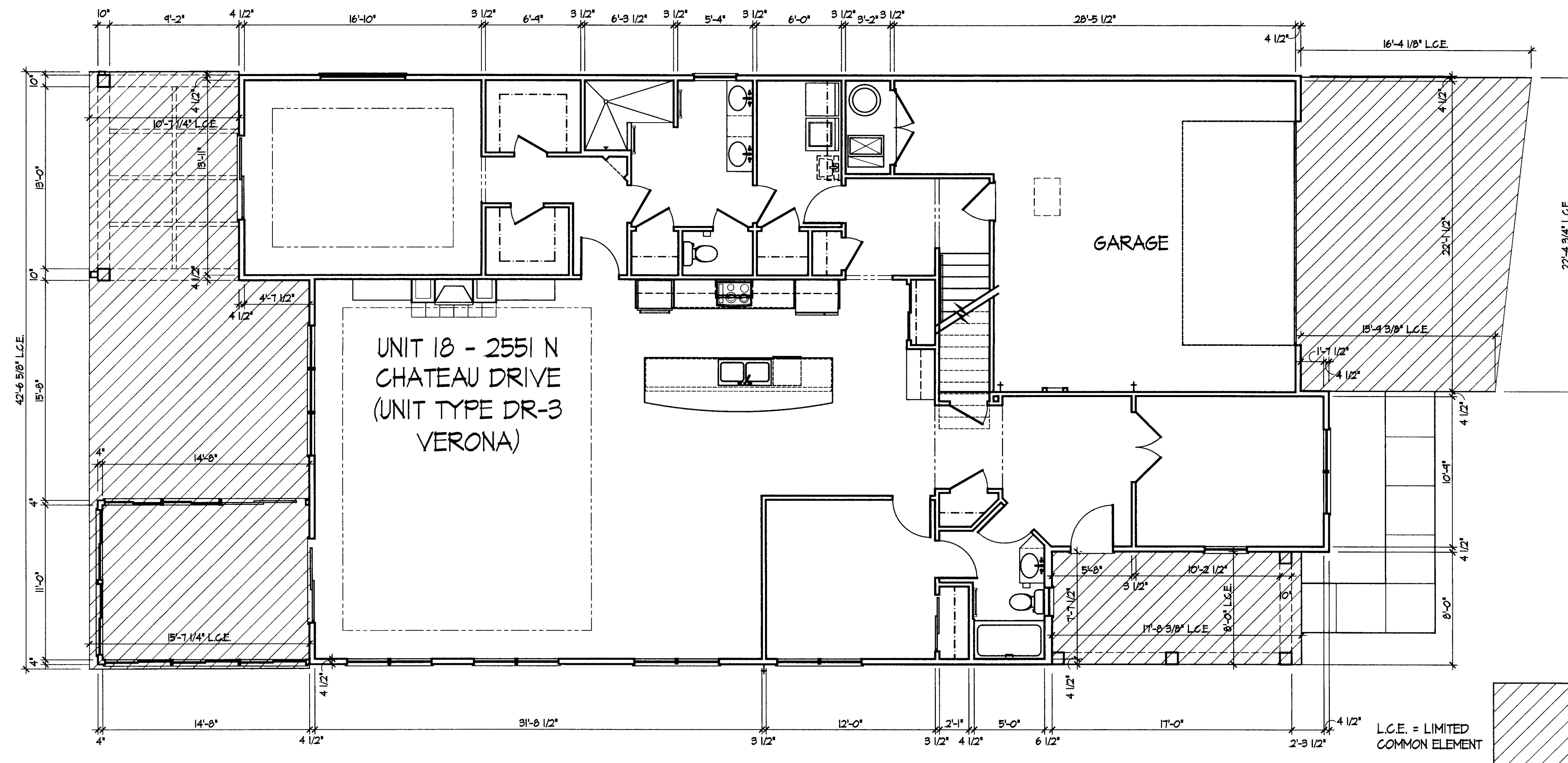
DEAN A. WENZ  
ARCHITECTS

2463 E. MAIN STREET  
BEXLEY, OHIO 43209  
(614) 239-6868  
FAX (614) 239-9868

Fairway Estates at Catawba Island Club  
Condominium  
Sixth Amendment

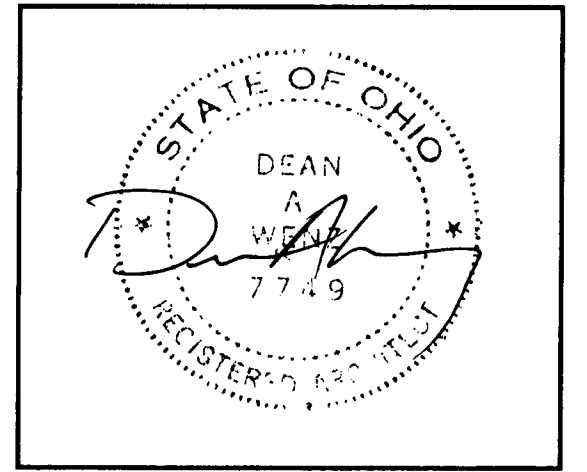


UNIT 18 - Second Floor Plan



UNIT 18 - First Floor Plan

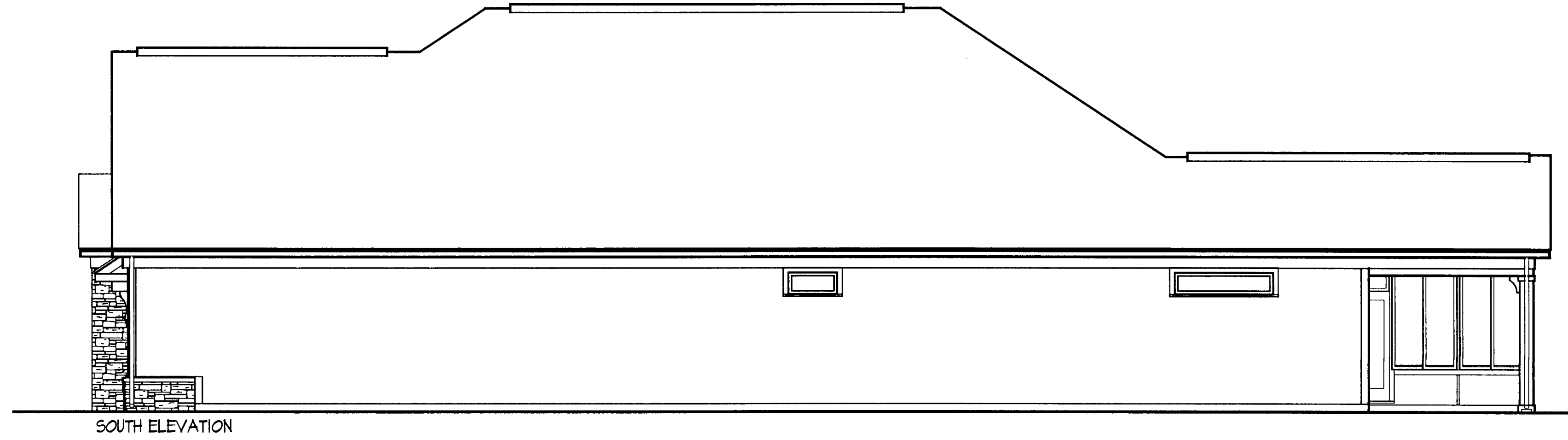
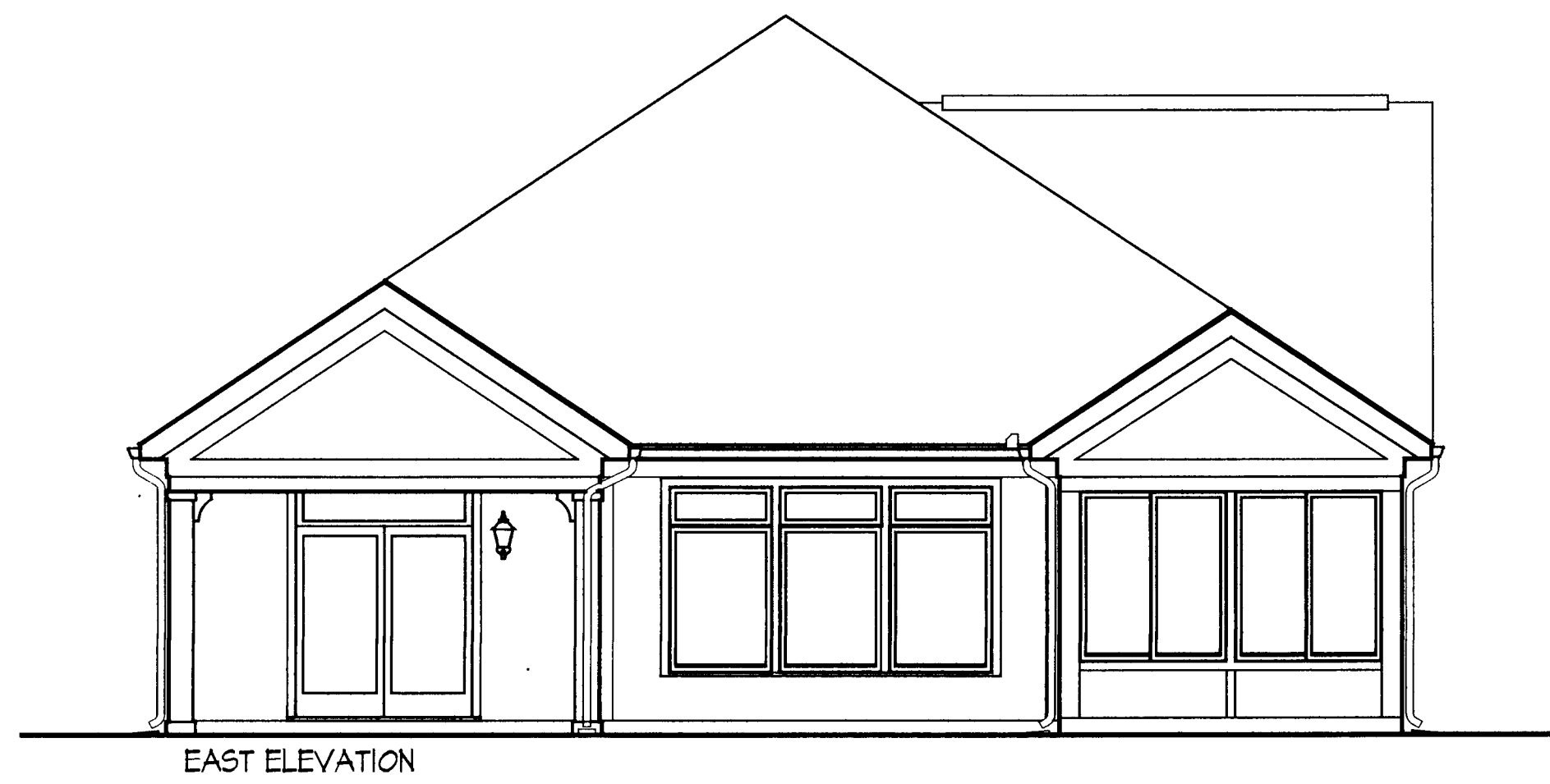
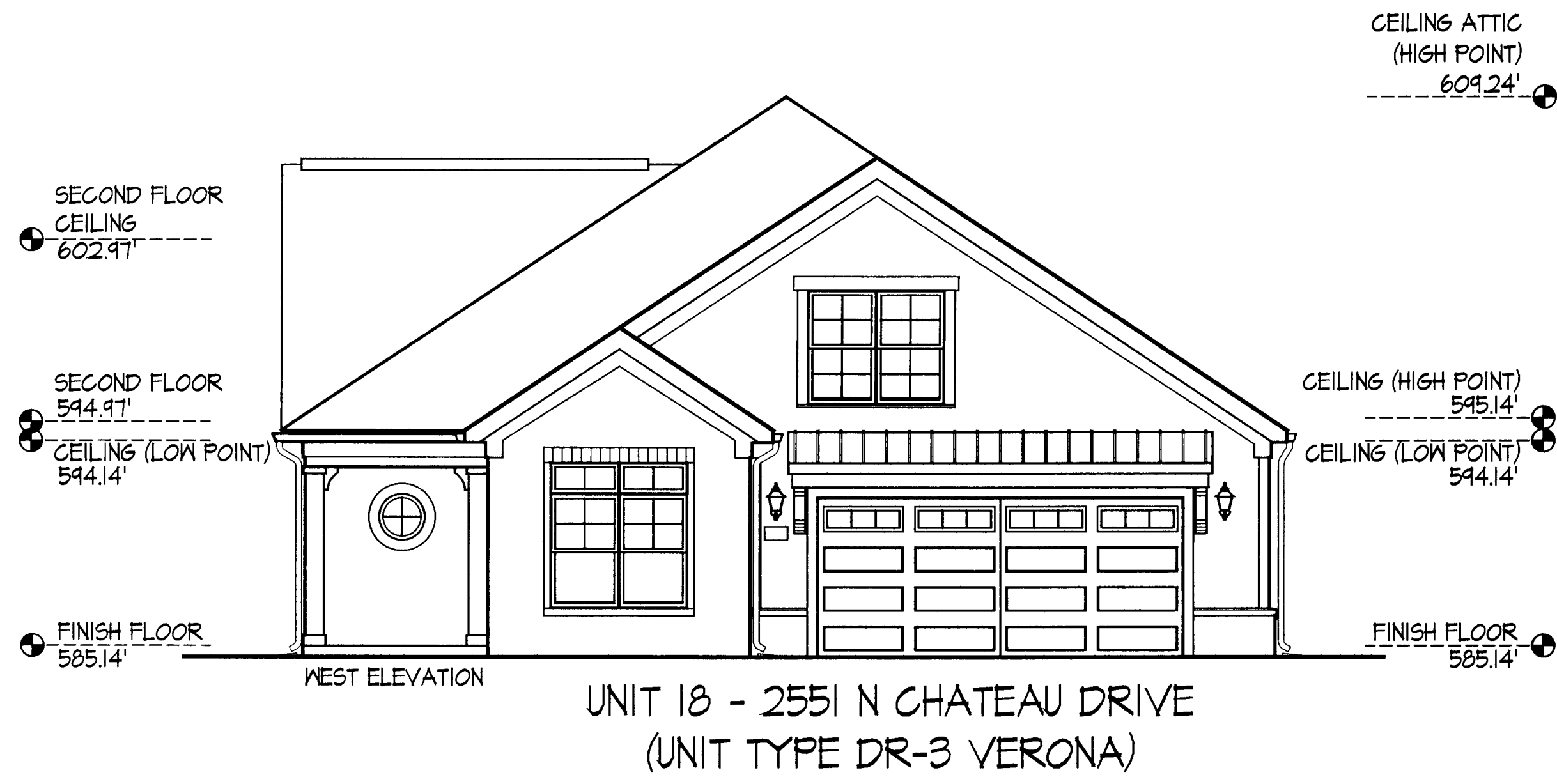
L.C.E. = LIMITED COMMON ELEMENT



DEAN A. WENZ  
ARCHITECTS

2463 E. MAIN STREET  
BEXLEY, OHIO 43209  
(614) 239-6868  
FAX (614) 239-9868

Fairway Estates at Catawba Island Club  
Condominium  
Sixth Amendment



UNIT 18 - Elevations