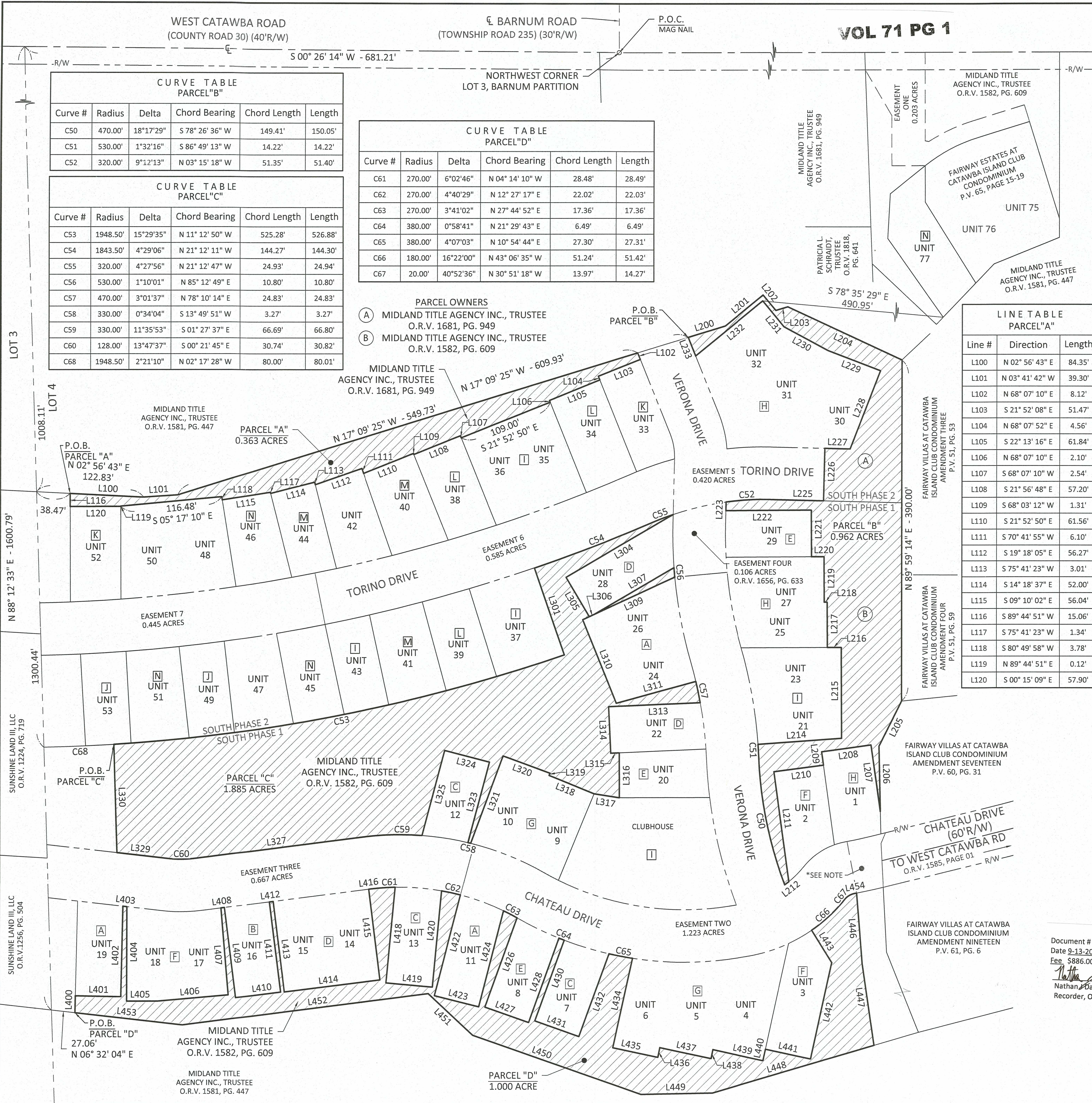


PLotted: Sep 02, 2021 - 1:10pm
DRAWING: M:\19026 [Fairway & Sunshine - General Survey Services]\04 Amendment 15 and Declarations\SURVEY\Dwg\CIC Declaration.dwg DECLARATION



CURVE TABLE PARCEL "B"

Curve #	Radius	Delta	Chord Bearing	Chord Length	Length
C50	470.00'	18°17'29"	S 78° 26' 36" W	149.41'	150.05'
C51	530.00'	1°32'16"	S 86° 49' 13" W	14.22'	14.22'
C52	320.00'	9°12'13"	N 03° 15' 18" W	51.35'	51.40'

CURVE TABLE PARCEL "C"

Curve #	Radius	Delta	Chord Bearing	Chord Length	Length
C53	1948.50'	15°29'35"	N 11° 12' 50" W	525.28'	526.88'
C54	1843.50'	4°29'06"	N 21° 12' 11" W	144.27'	144.30'
C55	320.00'	4°27'56"	N 21° 12' 47" W	24.93'	24.94'
C56	530.00'	1°10'01"	N 85° 12' 49" E	10.80'	10.80'
C57	470.00'	3°01'37"	N 78° 10' 14" E	24.83'	24.83'
C58	330.00'	0°34'04"	S 13° 49' 51" W	3.27'	3.27'
C59	330.00'	11°35'53"	S 01° 27' 37" E	66.69'	66.80'
C60	128.00'	13°47'37"	S 00° 21' 45" E	30.74'	30.82'
C68	1948.50'	2°21'10"	N 02° 17' 28" W	80.00'	80.01'

CURVE TABLE PARCEL "D"

Curve #	Radius	Delta	Chord Bearing	Chord Length	Length
C61	270.00'	6°02'46"	N 04° 14' 10" W	28.48'	28.49'
C62	270.00'	4°40'29"	N 12° 27' 17" E	22.02'	22.03'
C63	270.00'	3°41'02"	N 27° 44' 52" E	17.36'	17.36'
C64	380.00'	0°58'41"	N 21° 29' 43" E	6.49'	6.49'
C65	380.00'	4°07'03"	N 10° 54' 44" E	27.30'	27.31'
C66	180.00'	16°22'00"	N 43° 06' 35" W	51.24'	51.42'
C67	20.00'	40°52'36"	N 30° 51' 18" W	13.97'	14.27'

PARCEL OWNERS
(A) MIDLAND TITLE AGENCY INC., TRUSTEE
O.R.V. 1681, PG. 949
(B) MIDLAND TITLE AGENCY INC., TRUSTEE
O.R.V. 1582, PG. 609

VOL 71 PG 1

LINE TABLE PARCEL "B"

Line #	Direction	Length
L200	N 17° 09' 25" W	44.44'
L201	N 39° 28' 37" W	56.10'
L202	N 50° 31' 23" E	23.03'
L203	N 17° 09' 25" W	14.48'
L204	N 25° 03' 18" E	143.43'
L205	S 63° 37' 47" E	57.62'
L206	N 88° 44' 38" E	74.62'
L207	S 81° 58' 35" W	76.85'
L208	S 08° 01' 25" E	56.61'
L209	N 82° 16' 30" E	15.47'
L210	S 07° 43' 30" E	57.00'
L211	N 82° 16' 30" E	126.80'
L212	S 38° 24' 49" E	5.84'
L214	N 04° 15' 58" W	95.51'
L215	S 89° 42' 02" W	103.93'
L216	S 00° 17' 58" E	15.79'
L217	S 89° 42' 02" W	51.87'
L218	S 00° 17' 58" E	3.33'
L219	S 89° 42' 02" W	51.98'
L220	S 00° 27' 22" E	14.30'
L221	S 89° 32' 38" W	53.37'
L222	S 00° 27' 22" E	97.78'
L223	N 88° 43' 56" W	9.85'
L225	N 01° 20' 48" E	60.37'
L226	N 88° 39' 12" W	60.00'
L227	N 01° 20' 48" E	28.65'
L228	N 68° 56' 34" W	95.93'
L229	S 21° 03' 26" W	64.22'
L230	S 28° 25' 25" W	56.95'
L231	S 50° 31' 23" W	38.31'
L232	S 39° 28' 37" E	99.55'
L233	S 68° 07' 10" W	22.95'

LINE TABLE PARCEL "A"

Line #	Direction	Length
L100	N 02° 56' 43" E	84.35'
L101	N 03° 41' 42" W	39.30'
L102	N 68° 07' 10" E	8.12'
L103	S 21° 52' 08" E	51.47'
L104	N 68° 07' 52" E	4.56'
L105	S 22° 13' 16" E	61.84'
L106	N 68° 07' 10" E	2.10'
L107	S 68° 07' 10" W	2.54'
L108	S 21° 56' 48" E	57.20'
L109	S 68° 03' 12" W	1.31'
L110	S 21° 52' 50" E	61.56'
L111	S 70° 41' 55" W	6.10'
L112	S 19° 18' 05" E	56.27'
L113	S 75° 41' 23" W	3.01'
L114	S 14° 18' 37" E	52.00'
L115	S 09° 10' 02" E	56.04'
L116	S 89° 44' 51" W	15.06'
L117	S 75° 41' 23" W	1.34'
L118	S 80° 49' 58" W	3.78'
L119	N 89° 44' 51" E	0.12'
L120	S 00° 15' 09" E	57.90'

- EXISTING AMENDMENT LIST:
- A FAIRWAY ESTATES AT CATAWBA ISLAND CLUB CONDOMINIUM AMENDMENT ONE P.V. 65, PG. 36-43.
 - B FAIRWAY ESTATES AT CATAWBA ISLAND CLUB CONDOMINIUM AMENDMENT TWO P.V. 66, PG. 9.
 - C FAIRWAY ESTATES AT CATAWBA ISLAND CLUB CONDOMINIUM AMENDMENT THREE P.V. 66 PG. 33-40.
 - D FAIRWAY ESTATES AT CATAWBA ISLAND CLUB CONDOMINIUM AMENDMENT FOUR P.V. 66, PG. 51.
 - E FAIRWAY ESTATES AT CATAWBA ISLAND CLUB CONDOMINIUM AMENDMENT FIVE P.V. 67, PG. 10-17.
 - F FAIRWAY ESTATES AT CATAWBA ISLAND CLUB CONDOMINIUM AMENDMENT SIX P.V. 67, PG. 18-28.
 - G FAIRWAY ESTATES AT CATAWBA ISLAND CLUB CONDOMINIUM AMENDMENT SEVEN P.V. 68, PG. 1.
 - H FAIRWAY ESTATES AT CATAWBA ISLAND CLUB CONDOMINIUM AMENDMENT EIGHT P.V. 68, PG. 44.
 - I FAIRWAY ESTATES AT CATAWBA ISLAND CLUB CONDOMINIUM AMENDMENT NINE P.V. 69, PG. 41.
 - J FAIRWAY ESTATES AT CATAWBA ISLAND CLUB CONDOMINIUM AMENDMENT TEN P.V. 70, PG. 19.
 - K FAIRWAY ESTATES AT CATAWBA ISLAND CLUB CONDOMINIUM AMENDMENT ELEVEN P.V. 70, PG. 38.
 - L FAIRWAY ESTATES AT CATAWBA ISLAND CLUB CONDOMINIUM AMENDMENT TWELVE P.V. 71, PG. 1.
 - M FAIRWAY ESTATES AT CATAWBA ISLAND CLUB CONDOMINIUM AMENDMENT THIRTEEN P.V. 71, PG. 40.
 - N FAIRWAY ESTATES AT CATAWBA ISLAND CLUB CONDOMINIUM AMENDMENT FOURTEEN P.V. 72, PG. 12.

LEGEND
● MONUMENT FOUND
○ MONUMENT SET
R/W RIGHT-OF-WAY
P.O.B. POINT OF BEGINNING
P.O.C. POINT OF COMMENCEMENT
DECLARATION PARCELS

REFERENCES:
- COUNTY DEED/OFFICIAL RECORD BOOKS AND PAGES AS SHOWN.

*NOTE:
FAIRWAY VILLAS AT CATAWBA ISLAND CLUB CONDOMINIUM ROADWAY EASEMENT AMENDMENT NINETEEN P.V. 61, PG. 6 - 0.049 ACRES

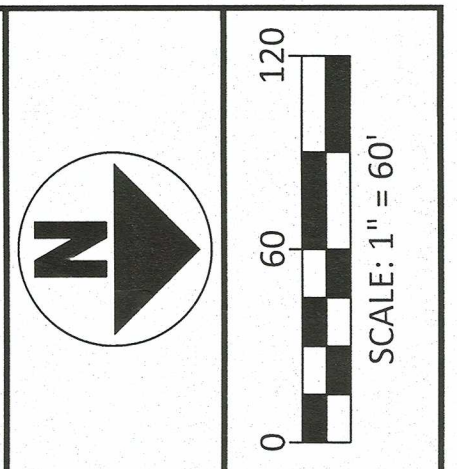
Document # 31016 Vol. 73 PG 1-13
Date 9-13-2021 Time 3:43 pm
Fee \$886.00
Nathan Daniels
Nathan Daniels
Recorder, Ottawa County Ohio

NOTE:
IRON PINS SET ARE 3/8" DIAMETER X 30" LONG IRON PINS WITH CAP "DGL-PJS 7883"

BASIS OF BEARINGS:
THE BEARINGS SHOWN HEREON ARE BASED ON AN ASSUMED BEARING AND ARE FOR THE SOLE PURPOSE OF SHOWING ANGULAR MEASUREMENT.

PETER J. SEGAARD
REGISTERED PROFESSIONAL SURVEYOR
OHIO PROFESSIONAL SURVEYOR NO. 7883

CERTIFICATION:
I HEREBY CERTIFY THAT THIS DRAWING ACCURATELY REFLECTS THE LOCATION OF UNITS, IMPROVEMENTS, AND RECORDED EASEMENTS TO THE BEST OF MY KNOWLEDGE AND BELIEF.
Peter J. Segard
PETER J. SEGAARD, P.S.
OHIO PROFESSIONAL SURVEYOR NO. 7883



NO.	REVISION	DATE
9		
8		
7		
6		
5		
4		
3		
2		
1		
NO		



FOR:
FAIRWAY ESTATES AT CATAWBA ISLAND CLUB CONDOMINIUM
PART OF LOT 4, SECTION 03, CATAWBA ISLAND TOWNSHIP, OTTAWA COUNTY, OHIO.

DECLARATION - EXHIBIT B

FILE: CIC DECLARATION
JOB NO.: 19026-4
DRAWN BY: GSW
ISSUED: 09/03/2021

1 of 13