

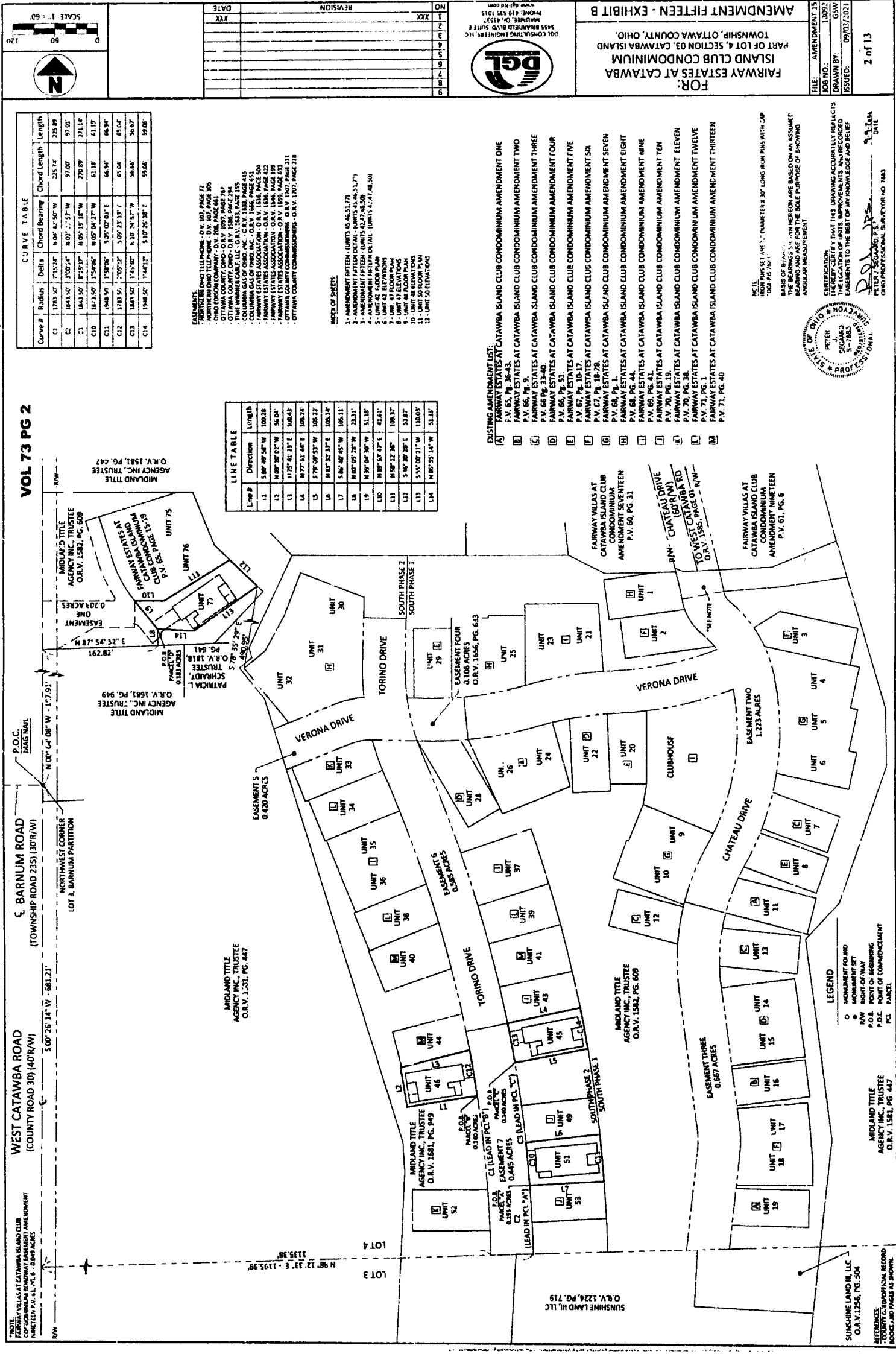
LINE TABLE	PARCEL	Line #	Direction	Length
1400		1400	N 86° 48' 25" W	19.71
1401		1401	N 01° 11' 35" E	53.00
1402		1402	N 86° 48' 25" W	104.52
1403		1403	N 06° 32' 04" E	4.32
1404		1404	N 89° 59' 17" E	107.96
1405		1405	N 00° 0' 18" E	36.36
1406		1406	N 04° 56' 27" W	79.73
1407		1407	N 85° 01' 28" W	99.75
1408		1408	N 07° 15' 33" W	4.83
1409		1409	N 87° 44' 37" E	105.83
1410		1410	N 07° 15' 33" W	52.09
1411		1411	N 87° 44' 37" W	103.87
1412		1412	N 07° 15' 33" W	4.69
1413		1413	N 87° 51' 23" E	104.30
1414		1414	N 07° 09' 01" W	110.30
1415		1415	N 87° 50' 57" W	104.59
1416		1416	N 07° 15' 33" W	7.79
1417		1417	N 87° 50' 57" E	106.30
1418		1418	N 07° 15' 33" W	53.30
1419		1419	N 87° 50' 57" E	110.57
1420		1420	N 07° 15' 33" W	53.30
1421		1421	N 87° 50' 57" E	110.57
1422		1422	N 07° 15' 33" W	53.30
1423		1423	N 87° 50' 57" E	110.57
1424		1424	N 07° 15' 33" W	53.30
1425		1425	N 87° 50' 57" E	110.57
1426		1426	N 07° 15' 33" W	53.30
1427		1427	N 87° 50' 57" E	110.57
1428		1428	N 07° 15' 33" W	53.30
1429		1429	N 87° 50' 57" E	110.57
1430		1430	N 07° 15' 33" W	53.30
1431		1431	N 87° 50' 57" E	110.57
1432		1432	N 07° 15' 33" W	53.30
1433		1433	N 87° 50' 57" E	110.57
1434		1434	N 07° 15' 33" W	53.30
1435		1435	N 87° 50' 57" E	110.57
1436		1436	N 07° 15' 33" W	53.30
1437		1437	N 87° 50' 57" E	110.57
1438		1438	N 07° 15' 33" W	53.30
1439		1439	N 87° 50' 57" E	110.57
1440		1440	N 07° 15' 33" W	53.30
1441		1441	N 87° 50' 57" E	110.57
1442		1442	N 07° 15' 33" W	53.30
1443		1443	N 87° 50' 57" E	110.57
1444		1444	N 07° 15' 33" W	53.30
1445		1445	N 87° 50' 57" E	110.57
1446		1446	N 07° 15' 33" W	53.30
1447		1447	N 87° 50' 57" E	110.57
1448		1448	N 07° 15' 33" W	53.30
1449		1449	N 87° 50' 57" E	110.57
1450		1450	N 07° 15' 33" W	53.30
1451		1451	N 87° 50' 57" E	110.57
1452		1452	N 07° 15' 33" W	53.30
1453		1453	N 87° 50' 57" E	110.57
1454		1454	N 07° 15' 33" W	53.30

LINE TABLE	PARCEL	Line #	Direction	Length
1301		1301	S 71° 02' 27" W	105.00
1302		1302	S 07° 30' 27" E	141.31
1303		1303	N 89° 29' 33" E	52.28
1304		1304	N 24° 35' 48" W	8.82
1305		1305	N 30° 30' 27" W	24.57
1306		1306	N 08° 52' 52" E	103.05
1307		1307	N 15° 31' 54" W	93.87
1308		1308	S 02° 35' 41" E	104.39
1309		1309	N 87° 24' 19" E	53.30
1310		1310	N 07° 35' 41" W	5.30
1311		1311	N 87° 24' 19" E	53.30
1312		1312	N 07° 35' 41" W	5.30
1313		1313	N 87° 24' 19" E	53.30
1314		1314	N 07° 35' 41" W	5.30
1315		1315	N 87° 24' 19" E	53.30
1316		1316	N 07° 35' 41" W	5.30
1317		1317	N 87° 24' 19" E	53.30
1318		1318	N 07° 35' 41" W	5.30
1319		1319	N 87° 24' 19" E	53.30
1320		1320	N 07° 35' 41" W	5.30
1321		1321	N 87° 24' 19" E	53.30
1322		1322	N 07° 35' 41" W	5.30
1323		1323	N 87° 24' 19" E	53.30
1324		1324	N 07° 35' 41" W	5.30
1325		1325	N 87° 24' 19" E	53.30
1326		1326	N 07° 35' 41" W	5.30
1327		1327	N 87° 24' 19" E	53.30
1328		1328	N 07° 35' 41" W	5.30
1329		1329	N 87° 24' 19" E	53.30
1330		1330	N 07° 35' 41" W	5.30
1331		1331	N 87° 24' 19" E	53.30
1332		1332	N 07° 35' 41" W	5.30
1333		1333	N 87° 24' 19" E	53.30
1334		1334	N 07° 35' 41" W	5.30
1335		1335	N 87° 24' 19" E	53.30
1336		1336	N 07° 35' 41" W	5.30
1337		1337	N 87° 24' 19" E	53.30
1338		1338	N 07° 35' 41" W	5.30
1339		1339	N 87° 24' 19" E	53.30
1340		1340	N 07° 35' 41" W	5.30
1341		1341	N 87° 24' 19" E	53.30
1342		1342	N 07° 35' 41" W	5.30
1343		1343	N 87° 24' 19" E	53.30
1344		1344	N 07° 35' 41" W	5.30
1345		1345	N 87° 24' 19" E	53.30
1346		1346	N 07° 35' 41" W	5.30
1347		1347	N 87° 24' 19" E	53.30
1348		1348	N 07° 35' 41" W	5.30
1349		1349	N 87° 24' 19" E	53.30
1350		1350	N 07° 35' 41" W	5.30

LINE TABLE	PARCEL	Line #	Direction	Length
1201		1201	N 17° 09' 25" W	46.44
1202		1202	N 25° 28' 37" W	141.31
1203		1203	N 50° 31' 23" E	23.03
1204		1204	N 1° 29' 25" W	14.46
1205		1205	N 25° 03' 18" E	148.43
1206		1206	N 88° 48' 30" E	74.42
1207		1207	S 81° 58' 15" W	76.45
1208		1208	S 08° 01' 25" E	66.41
1209		1209	N 87° 16' 30" E	15.47
1210		1210	S 07° 43' 30" E	9.79
1211		1211	N 82° 16' 30" E	126.80
1212		1212	N 38° 24' 49" E	9.48
1213		1213	N 04° 15' 58" W	95.51
1214		1214	S 89° 42' 07" W	103.89
1215		1215	S 02° 17' 54" E	15.79
1216		1216	S 02° 17' 54" E	15.79
1217		1217	S 89° 42' 07" W	51.87
1218		1218	S 02° 17' 54" E	15.79
1219		1219	S 89° 42' 07" W	51.87
1220		1220	S 02° 17' 54" E	15.79
1221		1221	S 89° 42' 07" W	51.87
1222		1222	S 02° 17' 54" E	15.79
1223		1223	S 89° 42' 07" W	51.87
1224		1224	S 02° 17' 54" E	15.79
1225		1225	S 89° 42' 07" W	51.87
1226		1226	S 02° 17' 54" E	15.79
1227		1227	S 89° 42' 07" W	51.87
1228		1228	S 02° 17' 54" E	15.79
1229		1229	S 89° 42' 07" W	51.87
1230		1230	S 02° 17' 54" E	15.79
1231		1231	S 89° 42' 07" W	51.87
1232		1232	S 02° 17' 54" E	15.79
1233		1233	S 89° 42' 07" W	51.87
1234		1234	S 02° 17' 54" E	15.79
1235		1235	S 89° 42' 07" W	51.87
1236		1236	S 02° 17' 54" E	15.79
1237		1237	S 89° 42' 07" W	51.87
1238		1238	S 02° 17' 54" E	15.79
1239		1239	S 89° 42' 07" W	51.87
1240		1240	S 02° 17' 54" E	15.79
1241		1241	S 89° 42' 07" W	51.87
1242		1242	S 02° 17' 54" E	15.79
1243		1243	S 89° 42' 07" W	51.87
1244		1244	S 02° 17' 54" E	15.79
1245		1245	S 89° 42' 07" W	51.87
1246		1246	S 02° 17' 54" E	15.79
1247		1247	S 89° 42' 07" W	51.87
1248		1248	S 02° 17' 54" E	15.79
1249		1249	S 89° 42' 07" W	51.87
1250		1250	S 02° 17' 54" E	15.79

LINE TABLE	PARCEL	Line #	Direction	Length
1101		1101	N 102° 56' 45" E	84.35
1102		1102	N 69° 41' 42" W	38.30
1103		1103	S 21° 52' 08" E	52.77
1104		1104	N 69° 41' 42" W	38.30
1105		1105	N 102° 56' 45" E	84.35
1106		1106	N 46° 07' 10" E	2.80
1107		1107	S 21° 52' 08" E	52.77
1108		1108	N 46° 07' 10" E	2.80
1109		1109	S 21° 52' 08" E	52.77
1110		1110	N 46° 07' 10" E	2.80
1111		1111	S 21° 52' 08" E	52.77
1112		1112	N 46° 07' 10" E	2.80
1113		1113	S 21° 52' 08" E	52.77
1114		1114	N 46° 07' 10" E	2.80
1115		1115	S 21° 52' 08" E	52.77
1116		1116	N 46° 07' 10" E	2.80
1117		1117	S 21° 52' 08" E	52.77
1118		1118	N 46° 07' 10" E	2.80
1119		1119	S 21° 52' 08" E	52.77
1120		1120	N 46° 07' 10" E	2.80
1121		1121	S 21° 52' 08" E	52.77
1122		1122	N 46° 07' 10" E	2.80
1123		1123	S 21° 52' 08" E	52.77
1124		1124	N 46° 07' 10" E	2.80
1125		1125	S 21° 52' 08" E	52.77
1126		1126	N 46° 07' 10" E	2.80
1127		1127	S 21° 52' 08" E	52.77
1128		1128	N 46° 07' 10" E	2.80
1129		1129	S 21° 52' 08" E	52.77
1130		1130	N 46° 07' 10" E	2.80
1131		1131	S 21° 52' 08" E	52.77
1132		1132	N 46° 07' 10" E	2.80
1133		1133	S 21° 52' 08" E	52.77
1134		1134	N 46° 07' 10" E	2.80
1135		1135	S 21° 52' 08" E	52.77
1136		1136	N 46° 07' 10" E	2.80
1137		1137	S 21° 52' 08" E	52.77
1138		1138	N 46° 07' 10" E	2.80
1139		1139	S 21° 52' 08" E	52.77
1140		1140	N 46° 07' 10" E	2.80
1141		1141	S 21° 52' 08" E	52.77
1142		1142	N 46° 07' 10" E	2.80
1143		1143	S 21° 52' 08" E	52.77
1144		1144	N 46° 07' 10" E	2.80
1145		1145	S 21° 52' 08" E	52.77
1146		1146	N 46° 07' 10" E	2.80
1147		1147	S 21° 52' 08" E	52.77
1148		1148	N 46° 07' 10" E	2.80
1149		1149	S 21° 52' 08" E	52.77
1150		1150	N 46° 07' 10" E	2.80
1151		1151	S 21° 52' 08" E	52.77
1152		1152	N 46° 07' 10" E	2.80
1153		1153	S 21° 52' 08" E	52.77
1154		1154	N 46° 07' 10" E	2.80
1155		1155	S 21° 52' 08" E	52.77
1156		1156	N 46° 07' 10" E	2.80
1157		1157	S 21° 52' 08" E	52.77
1158		1158	N 46° 07' 10" E	2.80
1159		1159	S 21° 52' 08" E	52.77
1160		1160	N 46° 07' 10" E	2.80

LINE TABLE	PARCEL	Line #	Direction	Length
1001</				



VOL 73 PG 2

CURVE TABLE

Curve #	Radius	Delta	Chord Bearing	Chord Length	Length
C1	1783.30'	75°52'48"	N 04° 42' 50" W	235.74'	232.89'
C2	1841.50'	1°02'24"	S 07° 15' 30" W	97.00'	97.01'
C3	1843.50'	8°15'37"	S 05° 15' 18" W	270.89'	271.14'
C4	1843.50'	1°54'06"	S 05° 04' 27" W	61.18'	61.19'
C5	1948.91'	1°39'06"	S 05° 02' 01" E	66.94'	66.94'
C6	1783.50'	70°52'27"	S 07° 23' 31" E	65.94'	65.64'
C7	1843.50'	1°45'00"	S 10° 54' 57" W	56.46'	56.67'
C8	1948.50'	1°44'12"	S 10° 26' 38" E	59.66'	59.06'

- EASEMENTS:**
- NORTHWEST CORNER - O.R.V. 1581, PAGE 72
 - NORTHWEST CORNER TELEPHONE - O.R.V. 1581, PAGE 305
 - NORTHWEST CORNER TELEPHONE - O.R.V. 1581, PAGE 305
 - OTTAWA COUNTY, OHIO - O.R.V. 1581, PAGE 797
 - OTTAWA COUNTY, OHIO - O.R.V. 1586, PAGE 294
 - OTTAWA COUNTY, OHIO - O.R.V. 1586, PAGE 294
 - COLUMBIA GAS OF OHIO, INC. - O.R.V. 1588, PAGE 415
 - COLUMBIA GAS OF OHIO, INC. - O.R.V. 1588, PAGE 415
 - FAIRWAY ESTATES ASSOCIATION - O.R.V. 1516, PAGE 504
 - FAIRWAY ESTATES ASSOCIATION - O.R.V. 1516, PAGE 504
 - FAIRWAY ESTATES ASSOCIATION - O.R.V. 1516, PAGE 504
 - FAIRWAY ESTATES ASSOCIATION - O.R.V. 1516, PAGE 504
 - FAIRWAY ESTATES ASSOCIATION - O.R.V. 1516, PAGE 504
 - OTTAWA COUNTY COMMISSIONERS - O.R.V. 1507, PAGE 211
 - OTTAWA COUNTY COMMISSIONERS - O.R.V. 1507, PAGE 211

- KEYS OF SHEETS:**
- 1 - AMENDMENT FIFTEEN - (UNITS 45, 46, 51, 52)
 - 2 - AMENDMENT FIFTEEN DETAIL - (UNITS 45, 46, 51, 52)
 - 3 - AMENDMENT FIFTEEN DETAIL - (UNITS 45, 46, 51, 52)
 - 4 - AMENDMENT FIFTEEN DETAIL - (UNITS 45, 46, 51, 52)
 - 5 - UNIT 42 FLOOR PLAN
 - 6 - UNIT 42 ELEVATIONS
 - 7 - UNIT 41 FLOOR PLAN
 - 8 - UNIT 41 ELEVATIONS
 - 9 - UNIT 40 FLOOR PLAN
 - 10 - UNIT 40 ELEVATIONS
 - 11 - UNIT 39 FLOOR PLAN
 - 12 - UNIT 39 ELEVATIONS

LIME TABLE

Line #	Direction	Length
11	S 08° 49' 58" W	100.28'
12	N 09° 30' 02" W	36.04'
13	N 15° 41' 33" E	164.83'
14	N 77° 51' 46" E	105.26'
15	S 79° 09' 53" W	108.22'
16	N 83° 32' 37" E	106.14'
17	S 86° 46' 45" W	106.11'
18	N 87° 05' 28" W	23.31'
19	N 87° 04' 30" W	51.18'
20	N 89° 55' 42" E	41.61'
21	N 89° 52' 30" E	100.37'
22	S 86° 30' 28" E	53.87'
23	S 55° 00' 21" W	130.05'
24	N 48° 55' 14" W	51.33'

- EXISTING AMENDMENT LIST:**
- FAIRWAY ESTATES AT CATAWBA ISLAND CLUB CONDOMINIUM AMENDMENT ONE P.V. 65, PG. 36-37
 - FAIRWAY ESTATES AT CATAWBA ISLAND CLUB CONDOMINIUM AMENDMENT TWO P.V. 66, PG. 38-39
 - FAIRWAY ESTATES AT CATAWBA ISLAND CLUB CONDOMINIUM AMENDMENT THREE P.V. 67, PG. 40-41
 - FAIRWAY ESTATES AT CATAWBA ISLAND CLUB CONDOMINIUM AMENDMENT FOUR P.V. 68, PG. 42
 - FAIRWAY ESTATES AT CATAWBA ISLAND CLUB CONDOMINIUM AMENDMENT FIVE P.V. 69, PG. 43
 - FAIRWAY ESTATES AT CATAWBA ISLAND CLUB CONDOMINIUM AMENDMENT SIX P.V. 70, PG. 44
 - FAIRWAY ESTATES AT CATAWBA ISLAND CLUB CONDOMINIUM AMENDMENT SEVEN P.V. 71, PG. 45
 - FAIRWAY ESTATES AT CATAWBA ISLAND CLUB CONDOMINIUM AMENDMENT EIGHT P.V. 72, PG. 46
 - FAIRWAY ESTATES AT CATAWBA ISLAND CLUB CONDOMINIUM AMENDMENT NINE P.V. 73, PG. 47
 - FAIRWAY ESTATES AT CATAWBA ISLAND CLUB CONDOMINIUM AMENDMENT TEN P.V. 74, PG. 48
 - FAIRWAY ESTATES AT CATAWBA ISLAND CLUB CONDOMINIUM AMENDMENT ELEVEN P.V. 75, PG. 49
 - FAIRWAY ESTATES AT CATAWBA ISLAND CLUB CONDOMINIUM AMENDMENT TWELVE P.V. 76, PG. 50
 - FAIRWAY ESTATES AT CATAWBA ISLAND CLUB CONDOMINIUM AMENDMENT THIRTEEN P.V. 77, PG. 51

FOR:
FAIRWAY ESTATES AT CATAWBA ISLAND CLUB CONDOMINIUM
 PART OF LOT 4, SECTION 03, CATAWBA ISLAND TOWNSHIP, OTTAWA COUNTY, OHIO.

AMENDMENT 15
 JOB NO.: 15023
 DRAWN BY: GSW
 ISSUED: 09/02/2021

2 of 13

DATE: 9/13/21

PETER J. SEGONDIA
 CHD PROFESSIONAL SURVEYOR NO. 11863



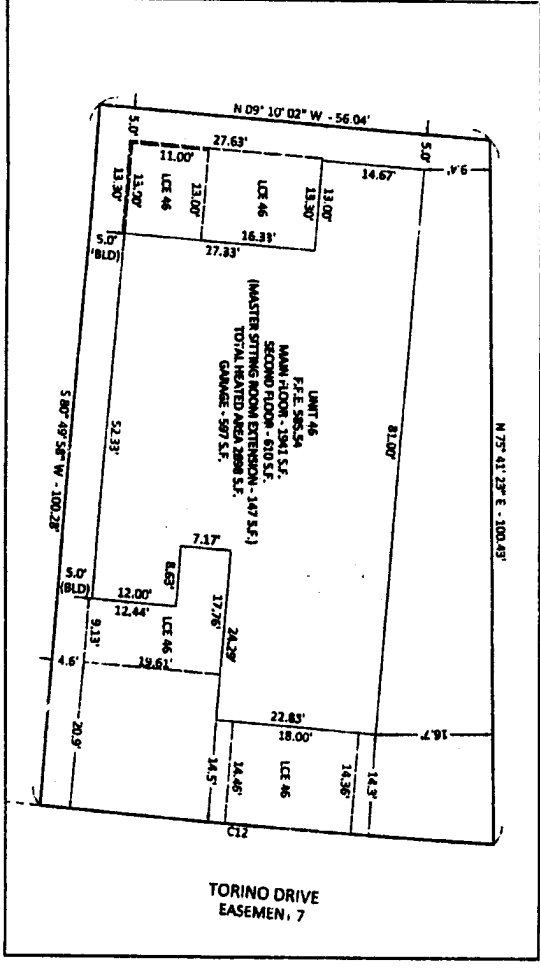
NOTICE:
 FAIRWAY VILLAGES AT CATAWBA ISLAND CLUB CONDOMINIUM RECONSTRUCTION EASEMENT AMENDMENT FIFTEEN P.L. PG. 6 - 1335.38

LEGEND

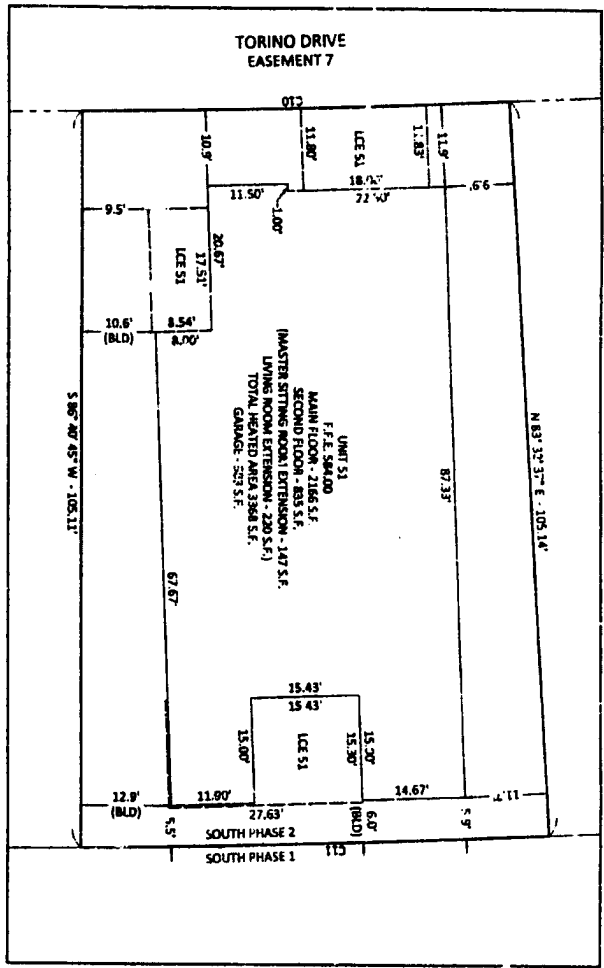
- MONUMENT FOUND
- MONUMENT SET
- N/W POINT OF BEGINNING
- P.O.C. POINT OF COMMENCEMENT
- PCL PARCEL

REFERENCES:
 SUNSHINE LAND III, LLC O.R.V. 1226, PG. 504
 MIDLAND TITLE AGENCY INC., TRUSTEE O.R.V. 1581, PG. 447

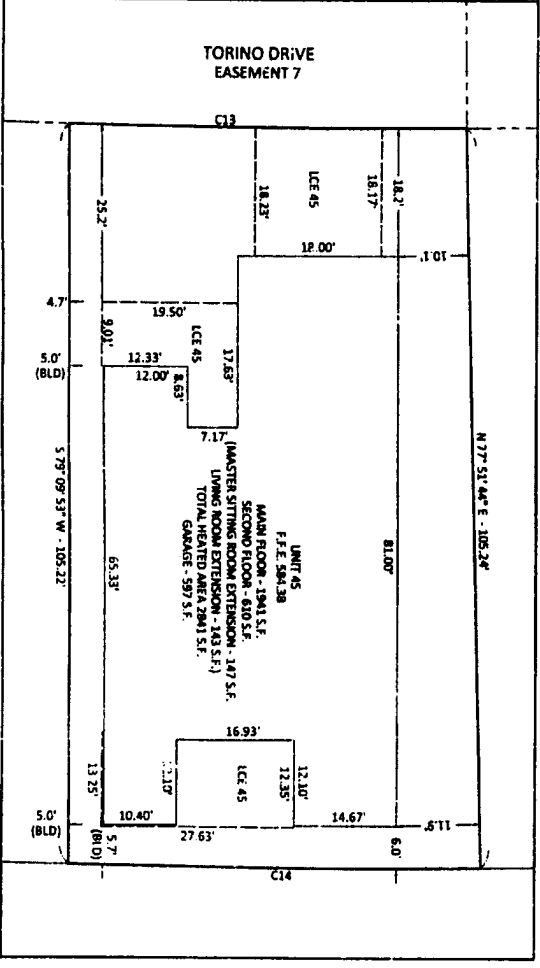
DRWING: 6/18/2020 (Fairway & Sunshore - General Survey Services)\(W:\Amendment 15 and Declaration)\SURVEY\Day\Amendment 14_REVISED.dwg AMENDMENT 14 DETAIL 1



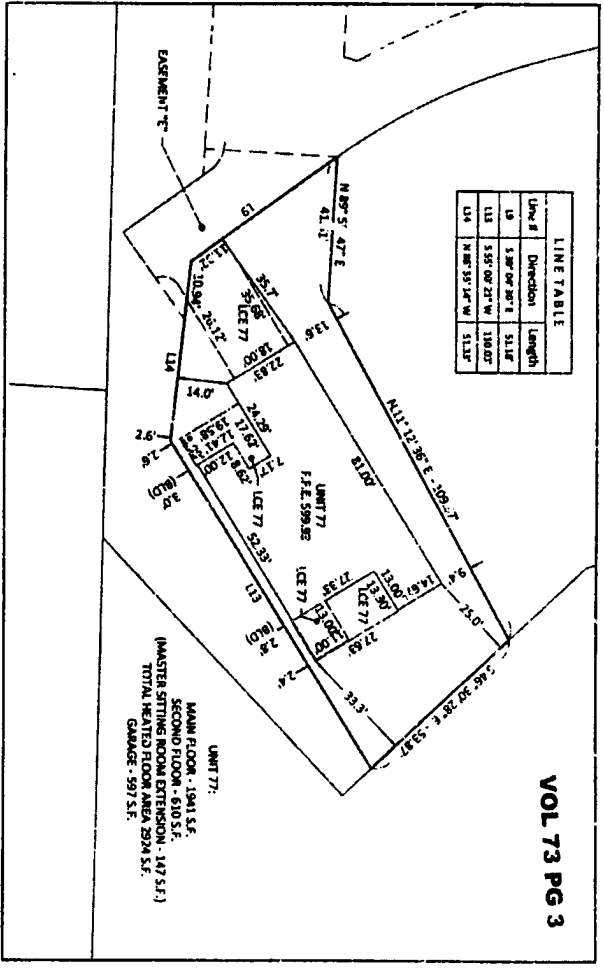
AMENDMENT FIFTEEN - PARCEL "A"
SCALE: 1"=10'



AMENDMENT FIFTEEN - PARCEL "A"
SCALE: 1"=10'



AMENDMENT FIFTEEN - PARCEL "C"
SCALE: 1"=10'



AMENDMENT FIFTEEN - PARCEL "D"
SCALE: 1"=20'


CURVE TABLE

Curve #	Radius	Delta	Chord Bearing	Chord Length	Length
C10	1043.80	179.00	N 87° 04' 27\"/>		

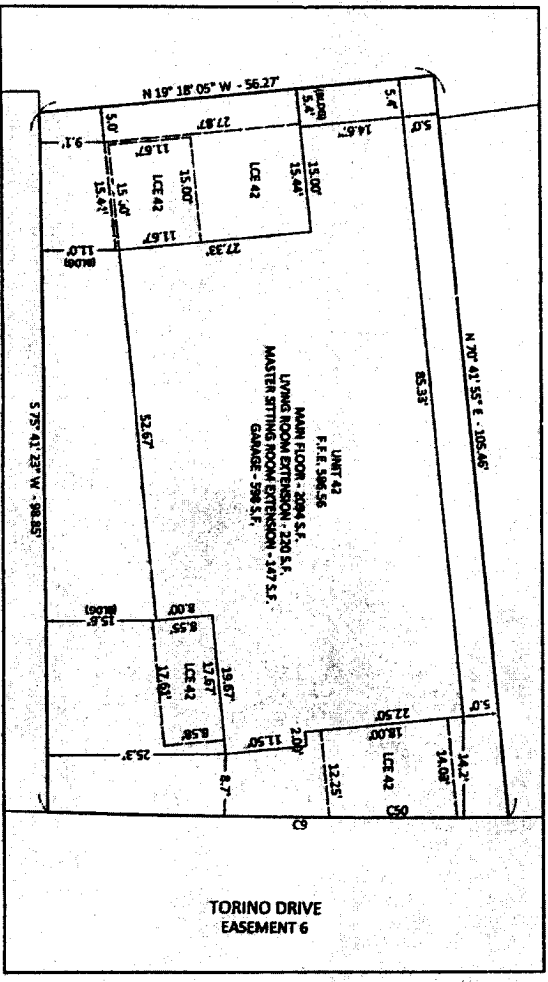
LINE TABLE

Line #	Direction	Length
L9	S 88° 04' 27\"/>	

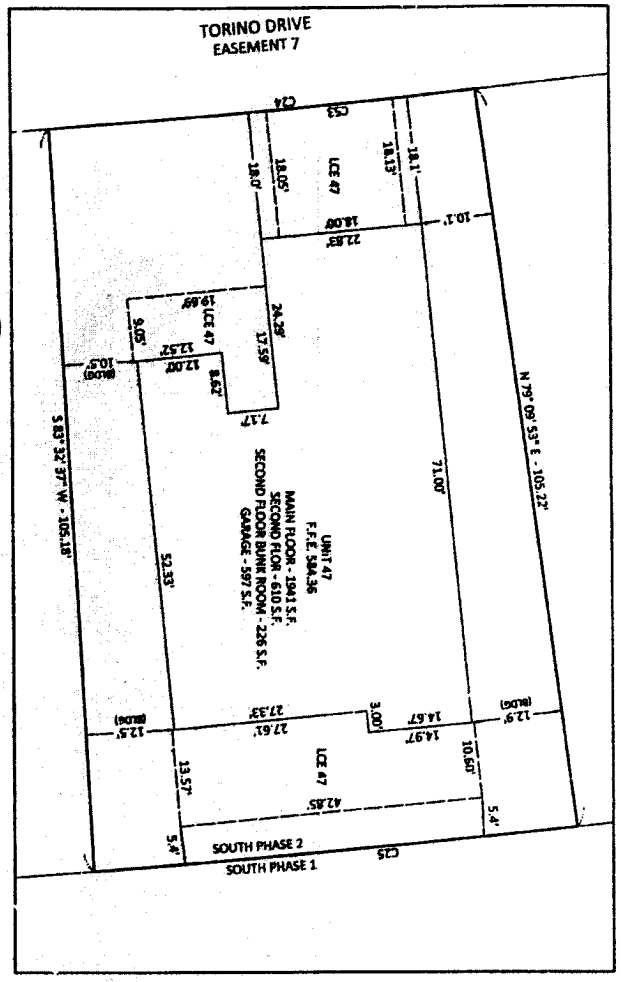
VOL 73 PG 3

<p>FOR: FAIRWAY ESTATES AT CATAWBA ISLAND CLUB CONDOMINIUM PART OF LOT 4, SECTION 03, CATAWBA ISLAND TOWNSHIP, OTTAWA COUNTY, OHIO.</p> <p>AMENDMENT FIFTEEN - EXHIBIT B</p>	 DGL CONSULTING ENGINEERS, LLC 3415 BARNFIELD BLVD. SUITE 2 MAUMEE, OH 43537 PHONE: 419.331.5215 www.dglinc.com	<table border="1" style="width: 100%;"> <tr> <th>NO.</th> <th>REVISION</th> <th>DATE</th> </tr> <tr> <td>1</td> <td>XXX</td> <td></td> </tr> </table>	NO.	REVISION	DATE	1	XXX		<p>FILE: AMENDMENT15 JOB NO.: 18092 DRAWN BY: GSW ISSUED: 09/09/2021</p> <p>3 of 13</p>
NO.	REVISION	DATE							
1	XXX								

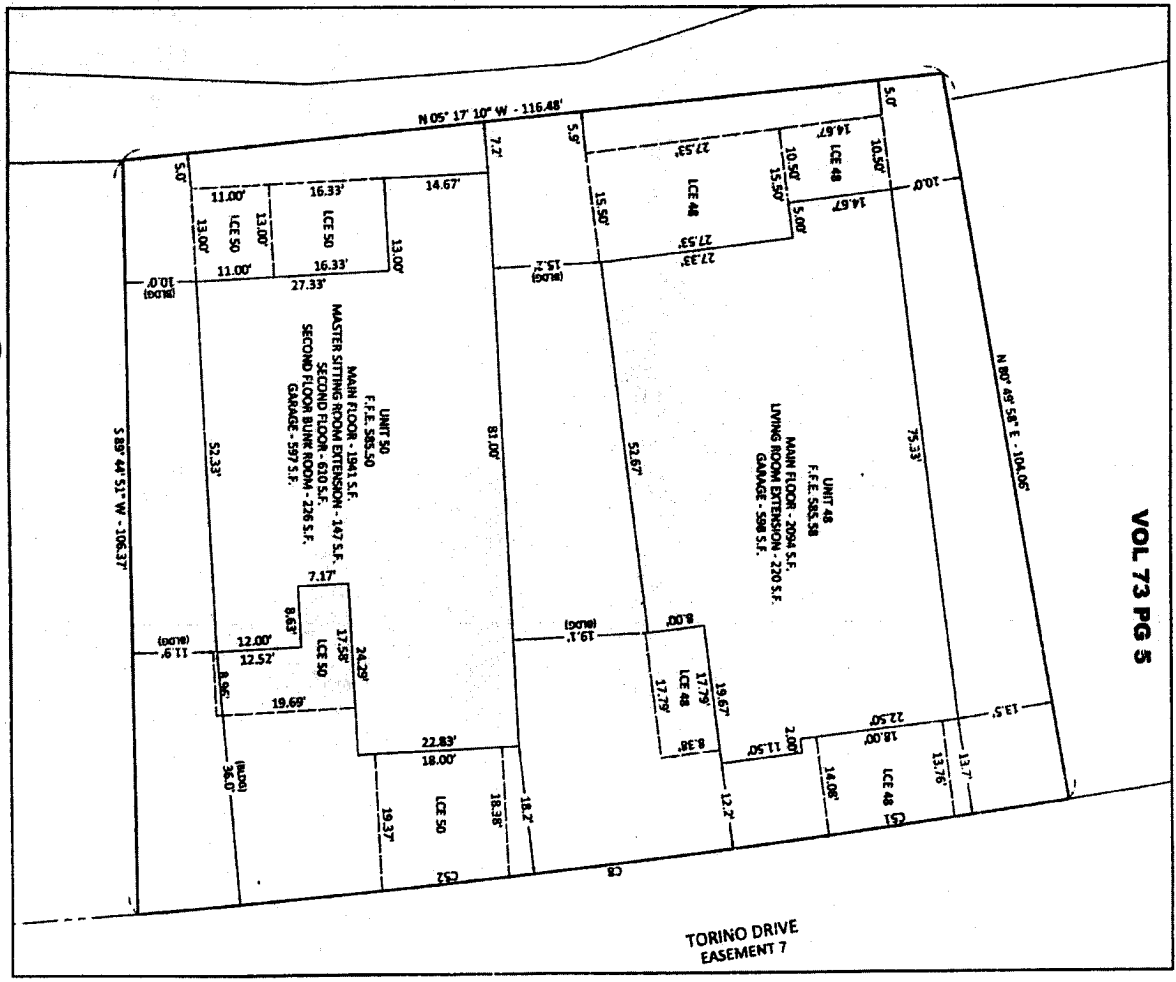
1:10 Sep 03, 2021 - 6:52am
 C:\Users\m\19206 (Fairway & Sunshyne - General Survey Services)\04 Amendment 15 and Declarations\SURVEY\Draw\Amendment 15.dwg AMENDMENT 15 DETAIL 1



AMENDMENT FIFTEEN - PARCEL "C"
 SCALE: 1"=10'



AMENDMENT FIFTEEN - PARCEL "B"
 SCALE: 1"=10'



AMENDMENT FIFTEEN - PARCEL "A"
 SCALE: 1"=20'

CURVE TABLE

Curve #	Radius	Delta	Chord Bearing	Chord Length	Length
C1	178.50'	97.92°	N 127° 49' 24" W	18.00'	18.00'
C2	178.50'	97.92°	N 07° 31' 35" W	18.00'	18.00'
C3	178.50'	97.92°	N 07° 31' 35" W	18.00'	18.00'
C4	178.50'	97.92°	N 07° 31' 35" W	18.00'	18.00'

CURVE TABLE

Curve #	Radius	Delta	Chord Bearing	Chord Length	Length
C1	178.50'	97.92°	N 07° 31' 35" W	18.27'	18.27'
C2	178.50'	97.92°	N 137° 00' 00" W	68.26'	68.25'
C3	178.50'	97.92°	N 07° 31' 35" W	68.26'	68.25'
C4	178.50'	97.92°	N 07° 31' 35" W	68.27'	68.27'

VOL 73 PG 5

FOR:
 FAIRWAY ESTATES AT CATAWBA
 ISLAND CLUB CONDOMINIUM
 PART OF LOT 4, SECTION 03, CATAWBA ISLAND
 TOWNSHIP, OTTAWA COUNTY, OHIO.



DGL CONSULTING ENGINEERS, LLC
 3455 SHARFIELD BLVD. SUITE E
 CLEVELAND, OH 44133
 PHONE: 419.535.1015
 www.dgl-llc.com

NO	REVISION	DATE
1	XXX	
2		
3		
4		
5		
6		
7		
8		

5 of 13
 JOB NO.: AMENDMENT 15
 DATE: 130626-04
 DRAWN BY: GSW
 ISSUED: 09/02/2021

AMENDMENT FIFTEEN - EXHIBIT B