

Curve Table					
Curve #	Radius	Delta	Chord Bearing	Chord Length	Length
C1	270.00'	9°51'00"	S 01° 58' 47" E	46.36'	46.42'
C6	180.00'	7°42'00"	S 13° 57' 08" W	24.17'	24.19'
C7	120.00'	14°51'25"	S 10° 22' 25" W	31.03'	31.12'

Line Table		
Line #	Direction	Length
L22	N 83° 16' 41" E	60.00'
L23	S 87° 03' 19" E	138.81'
L24	S 06° 54' 17" E	87.29'
L25	N 87° 03' 19" W	153.74'
L26	N 02° 56' 43" E	86.00'
L27	N 83° 05' 35" E	101.17'

Line Table		
Line #	Direction	Length
L28	S 06° 54' 17" E	86.00'
L29	S 83° 05' 35" W	101.17'
L30	N 06° 54' 17" W	86.00'

REFERENCES:

- [A] FAIRWAY COTTAGES AT CATAWBA ISLAND CLUB INITIAL DECLARATION P.V. 74, PG. 122
- [B] FAIRWAY COTTAGES AT CATAWBA ISLAND CLUB FIRST AMENDMENT P.V. 74, PG. 152
- [C] FAIRWAY COTTAGES AT CATAWBA ISLAND CLUB SECOND AMENDMENT P.V. 74, PG. 182
- [D] FAIRWAY COTTAGES AT CATAWBA ISLAND CLUB THIRD AMENDMENT P.V. 74, PG. 227

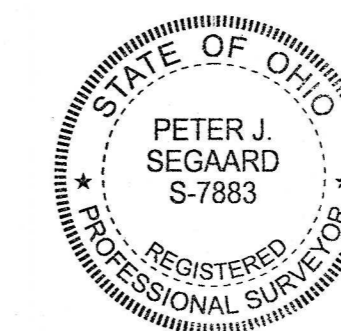
REFERENCES:

- COUNTY DEED/OFFICIAL RECORD BOOKS AND PAGES AS SHOWN.
- OTTAWA COUNTY SURVEY RECORDS:  
 4-5-265 4-5-271 CI-S3-L3-00227  
 CI-S3-L4-00018 CI-S3-L4-00073  
 CI-S3-L4-00074 CI-S3-L4-00079

LEGEND

- MONUMENT FOUND
- R/W RIGHT-OF-WAY
- P.O.B. POINT OF BEGINNING
- P.O.C. POINT OF COMMENCEMENT
- FOURTH AMENDMENT AREA

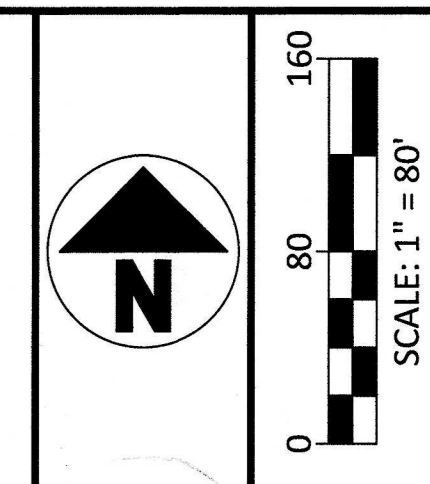
202400006664 10/24/2024 03:40 PM  
 Filed for Record in OTTAWA County, Ohio  
 Nathan J. Daniels Rec Fees: \$760.00  
 OR Vol 74 Pgs 256 - 265



SURVEYOR'S CERTIFICATION:  
 I HEREBY DECLARE THAT THE DRAWING ACCURATELY REFLECTS THE LOCATION OF IMPROVEMENTS AND RECORDED EASEMENTS TO THE BEST OF MY KNOWLEDGE AND BELIEF.

Peter J. Seggaard  
 PETER J. SEGAARD, P.S.  
 OHIO PROFESSIONAL SURVEYOR NO. 7883

10-23-2024  
 DATE



NO	REVISION	DATE
1		
2		
3		
4		
5		
6		
7		
8		
9		

NO	REVISION	DATE
1		
2		
3		
4		
5		
6		
7		
8		
9		

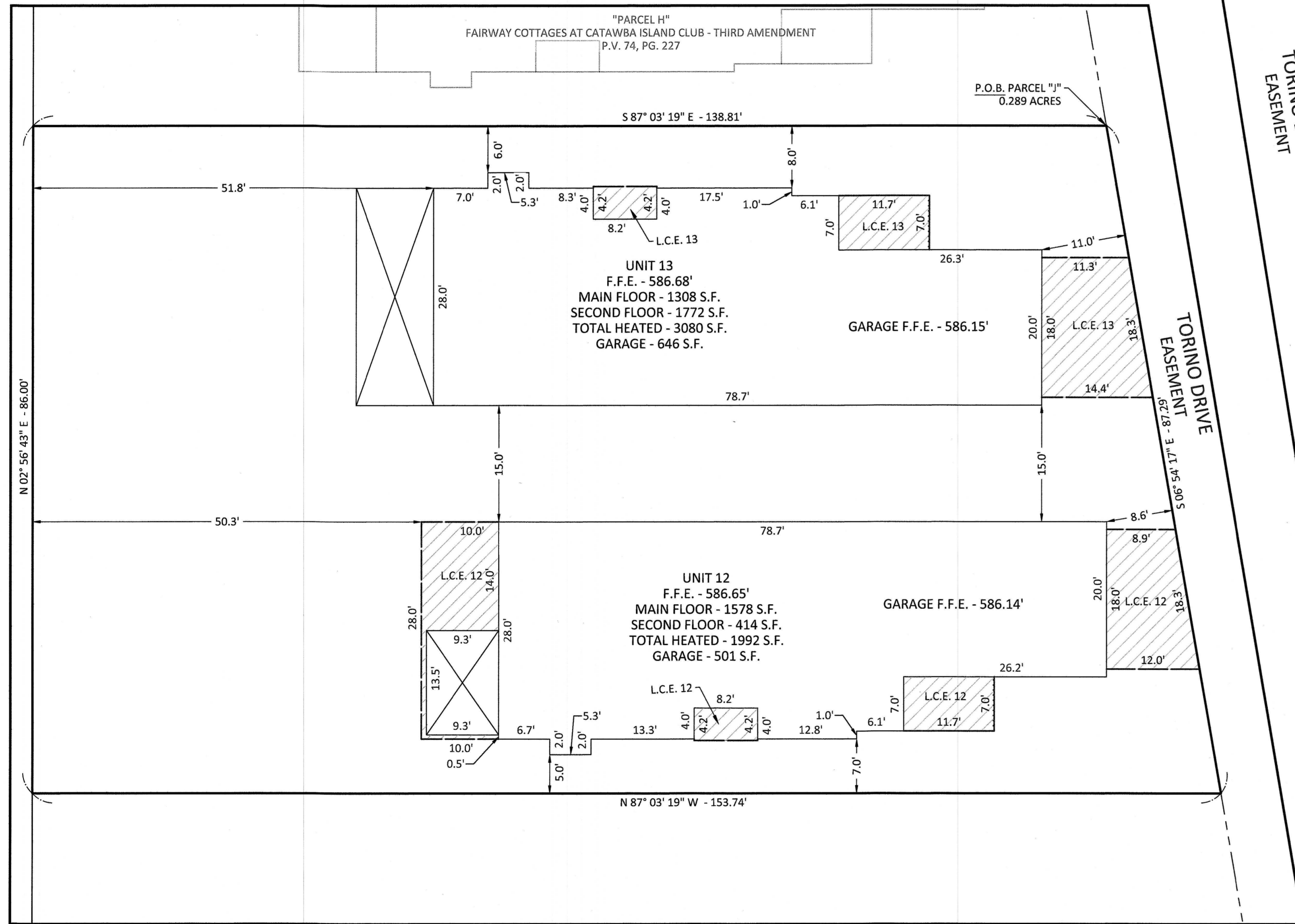
DGL CONSULTING ENGINEERS, LLC  
 232 B HAVRE STREET  
 PORT CLINTON, OH 43452  
 PHONE: 419.635.7541  
 www.dgl-td.com

## FAIRWAY COTTAGES AT CATAWBA ISLAND CLUB PART OF SECTION 3, LOT 3, CATAWBA ISLAND TOWNSHIP, OTTAWA COUNTY, OHIO FOURTH AMENDMENT

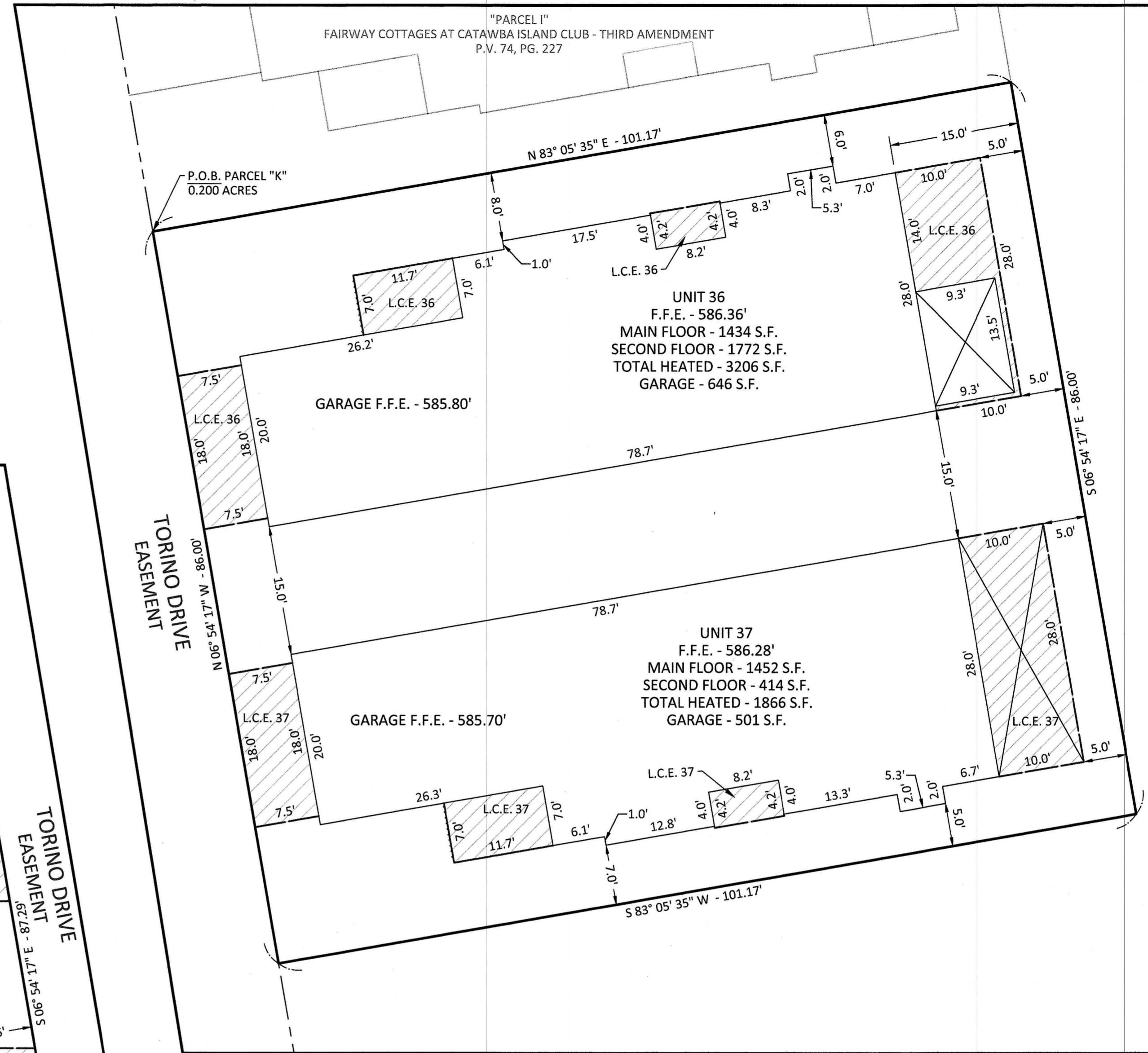
FILE: 2024 Phase\_Fourth Amendment.dwg  
 JOB NO.: 23363-  
 DRAWN BY: GSW  
 ISSUED: 2024-10-16

1/2

PLOTTED: Oct 22, 2024 - 4:04pm  
 DRAWING: M:\233563 Fairway Cottages - Condominium Documents\SURVEY\DWG\2024\_Phase\_Fourth Amendment.dwg: AMEND 4 - DETAIL-1-22-24



**FOURTH AMENDMENT - PARCEL "J"**  
 SCALE: 1" = 10'



**FOURTH AMENDMENT - PARCEL "K"**  
 SCALE: 1" = 10'

**LEGEND**

- P.O.B. POINT OF BEGINNING
- F.F.E. FINISHED FLOOR ELEVATION
- LCE # LIMITED COMMON ELEMENT

NO	REVISION	DATE
9		
8		
7		
6		
5		
4		
3		
2		
1		

**DGL**  
 CONSULTING ENGINEERS, LLC  
 123 B MAPLE STREET  
 PORT CLINTON, OH 43452  
 PHONE: 419.635.7541  
 www.dgl-llc.com

**FAIRWAY COTTAGES  
 AT CATAWBA ISLAND CLUB**  
 PART OF SECTION 3, LOT 3,  
 CATAWBA ISLAND TOWNSHIP, OTTAWA COUNTY, OHIO  
**FOURTH AMENDMENT EXHIBIT B**

FILE: 2024\_Phase\_Fourth Amendment.dwg  
 JOB NO.: 23363-  
 DRAWN BY: GSW  
 ISSUED: 2024-10-16