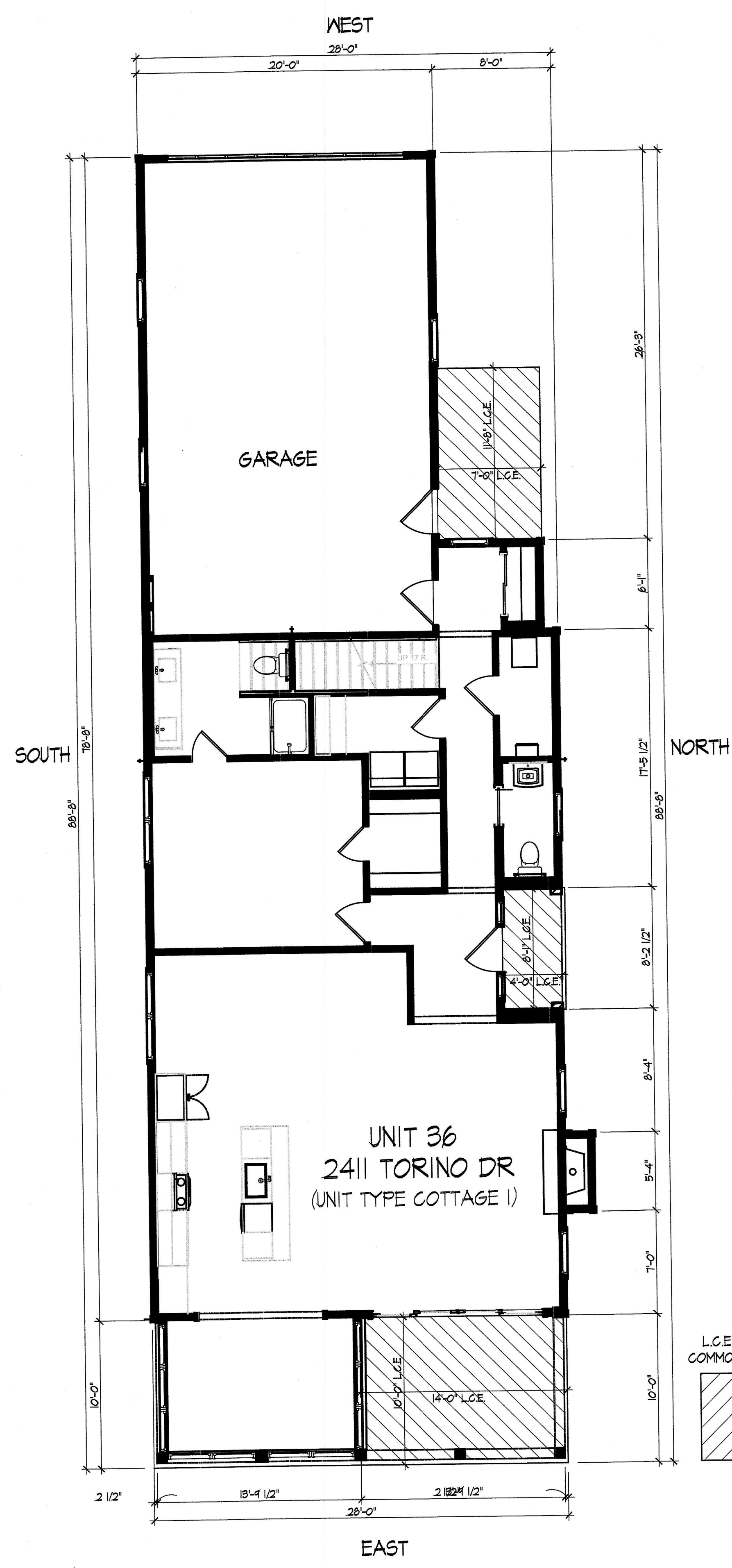


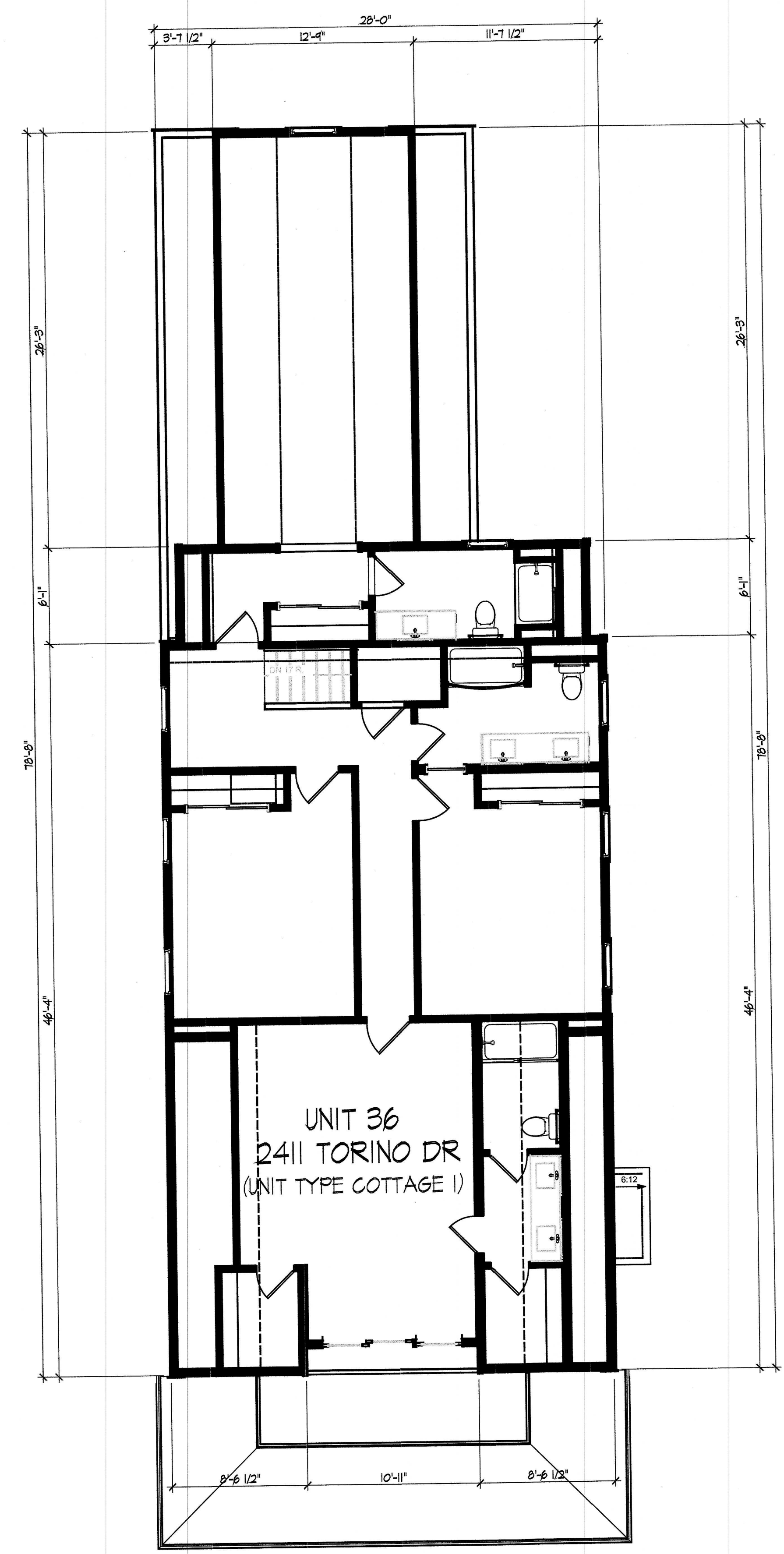
UNIT 36
2411 TORINO DR
(UNIT TYPE COTTAGE 1)

Foundation Plan



UNIT 36
2411 TORINO DR
(UNIT TYPE COTTAGE 1)

First Floor Plan



UNIT 36
2411 TORINO DR
(UNIT TYPE COTTAGE 1)

Second Floor Plan

DEAN A. WENZ
ARCHITECTS
323 N ARDMORE ROAD
BEXLEY, OHIO 43209
(614) 239-6868
FAX (614) 239-9868

Fairway Cottages at Catawba Island Club
Unit Owners Association, Inc.
Documentation Drawings
Fourth Amendment



WEST

- 2nd Flr Ceiling Ht
19'-9"
- 2nd Flr Window Ht
17'-7 7/8"
- Second Floor
10'-7 7/8"
- 1st Flr Ceiling Ht
9'-1 1/8"
- 1st Flr Window Ht
7'-0"
- First Floor
0'-0"



UNIT 36
2411 TORINO DR
(UNIT TYPE COTTAGE 1)

- Bedrm 5 Clg. Ht
17'-5"
- Bedroom 5 Flr
9'-3 7/8"
- 1st Flr Entry/Garage Clg Ht
8'-1 1/8"
- 1st Flr Window Ht
7'-0"
- First Floor
0'-0"



EAST



SOUTH

Elevations

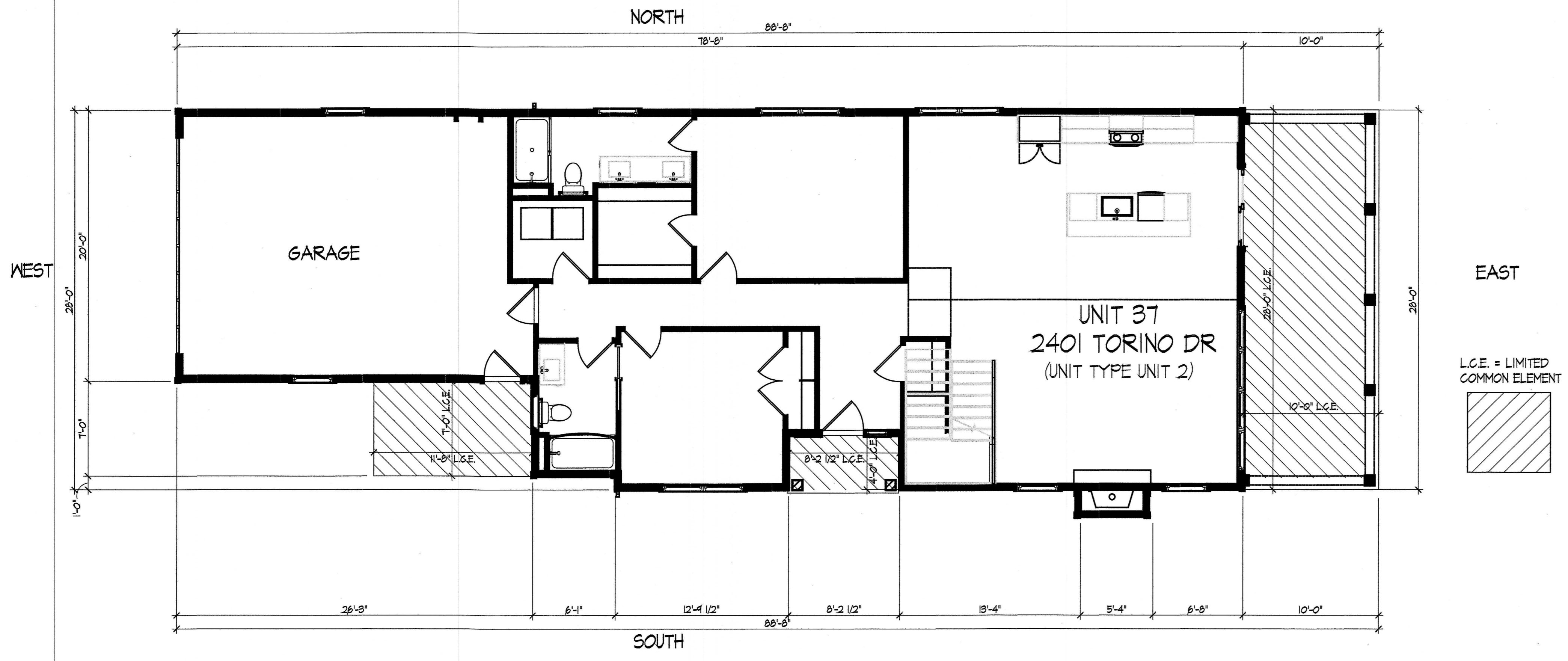
DEAN A. WENZ
ARCHITECTS

323 N ARDMORE ROAD
BEXLEY, OHIO 43209
(614) 239-6868
FAX (614) 239-9868

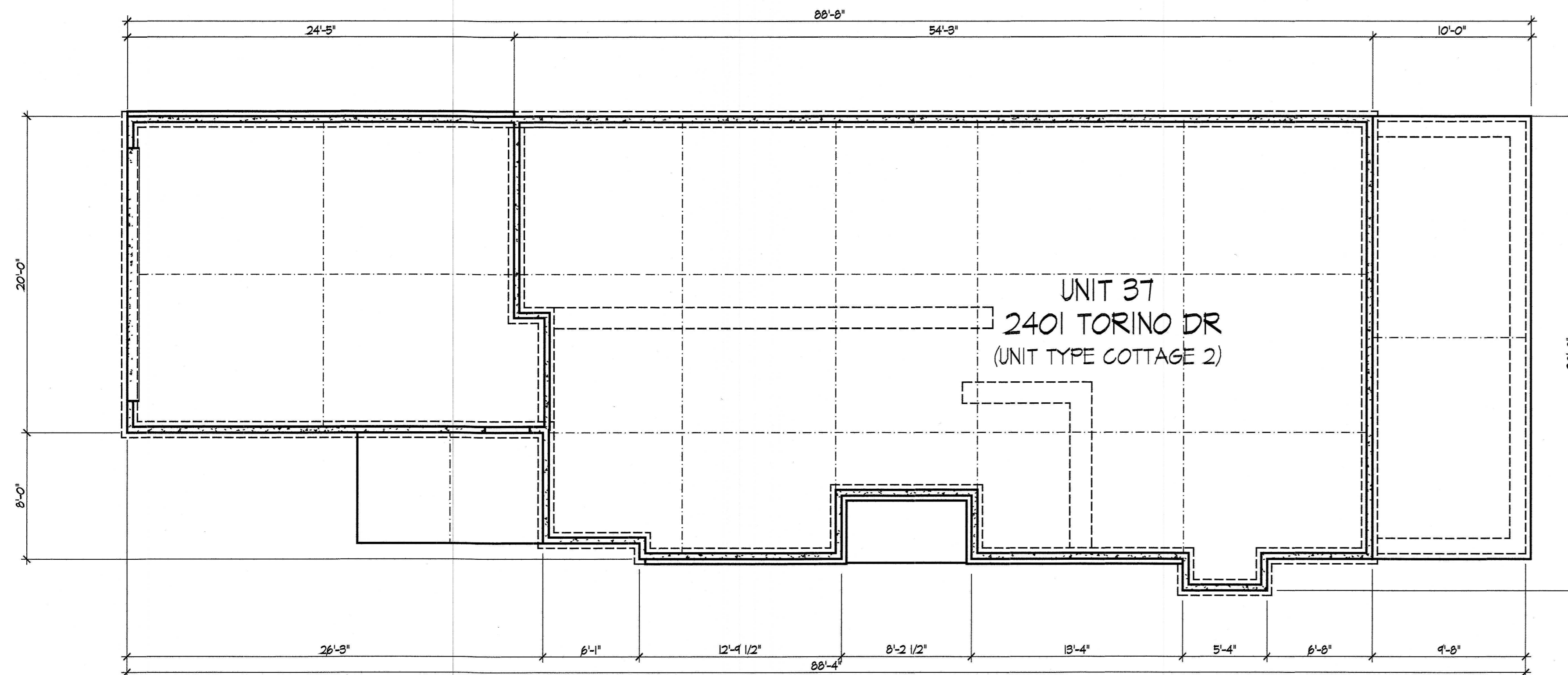
Fairway Cottages at Catawba Island Club
Unit Owners Association, Inc.
Documentation Drawings
Fourth Amendment

Architect Project Number
2020-046A

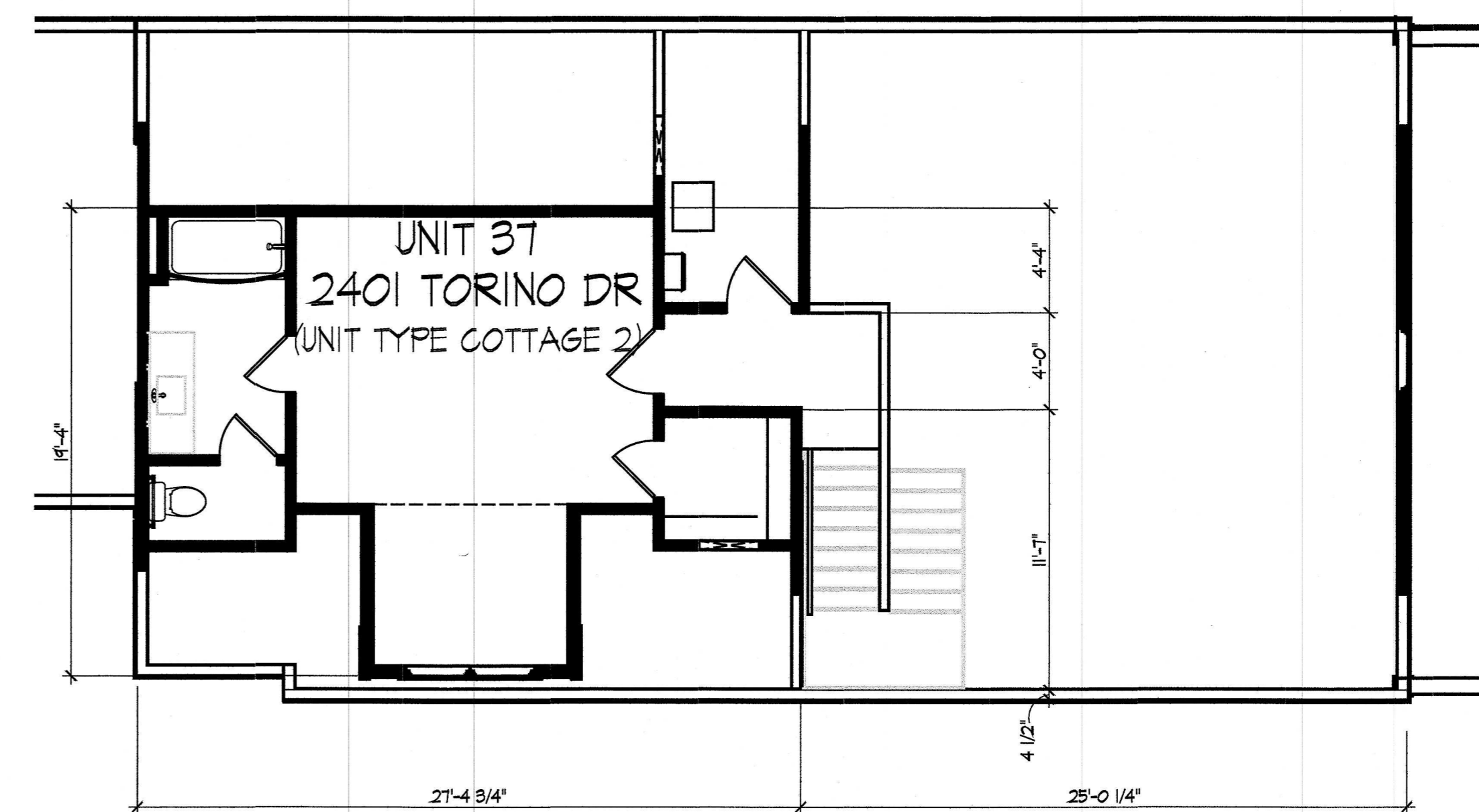
Sheet Number
8 of 10



First Floor Plan



Foundation Plan



Second Floor Plan

DEAN A. WENZ
ARCHITECTS

323 N ARDMORE ROAD
BEXLEY, OHIO 43209
(614) 239-6868
FAX (614) 239-9868

Fairway Cottages at Catawba Island Club
Unit Owners Association, Inc.
Documentation Drawings
Fourth Amendment

Architect Project Number
2020-046A

Sheet Number

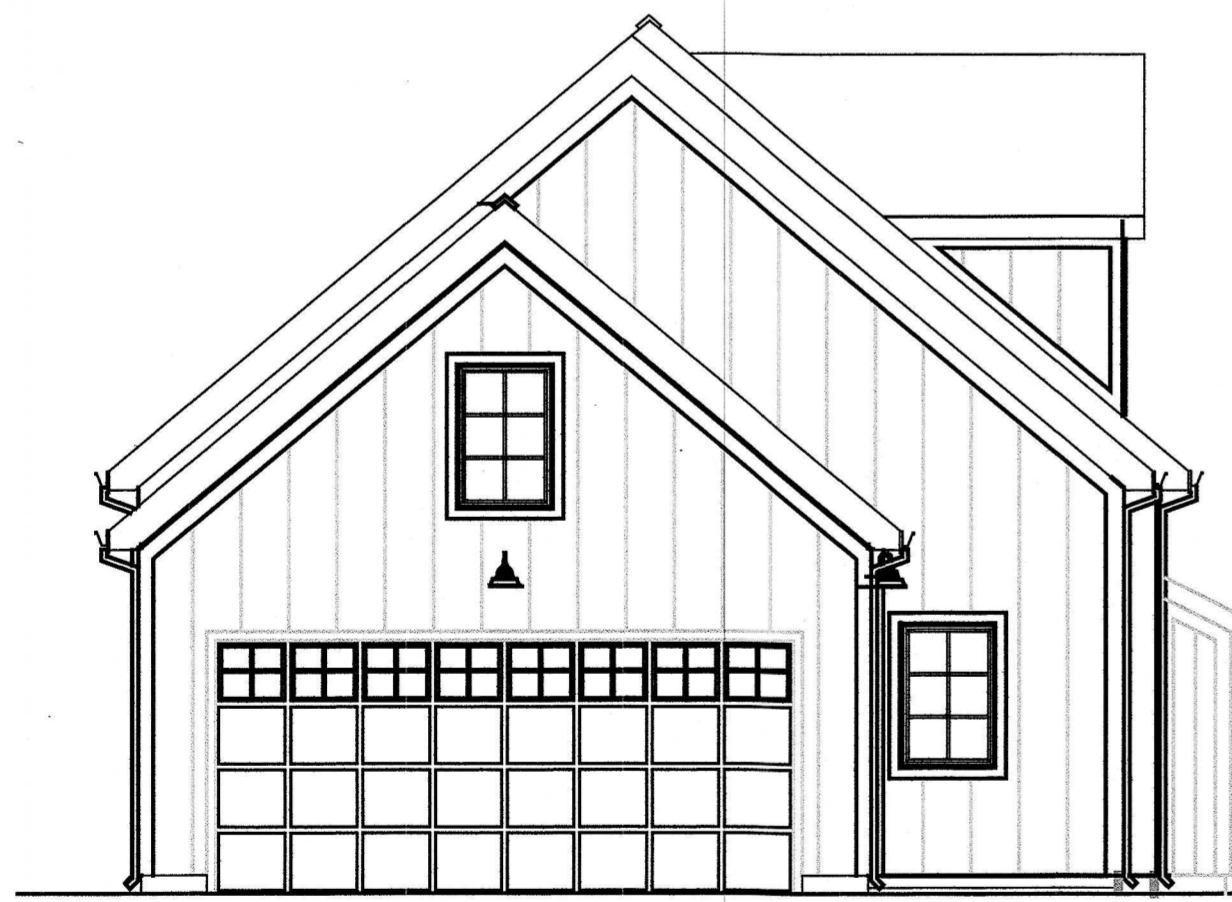
9 of 10



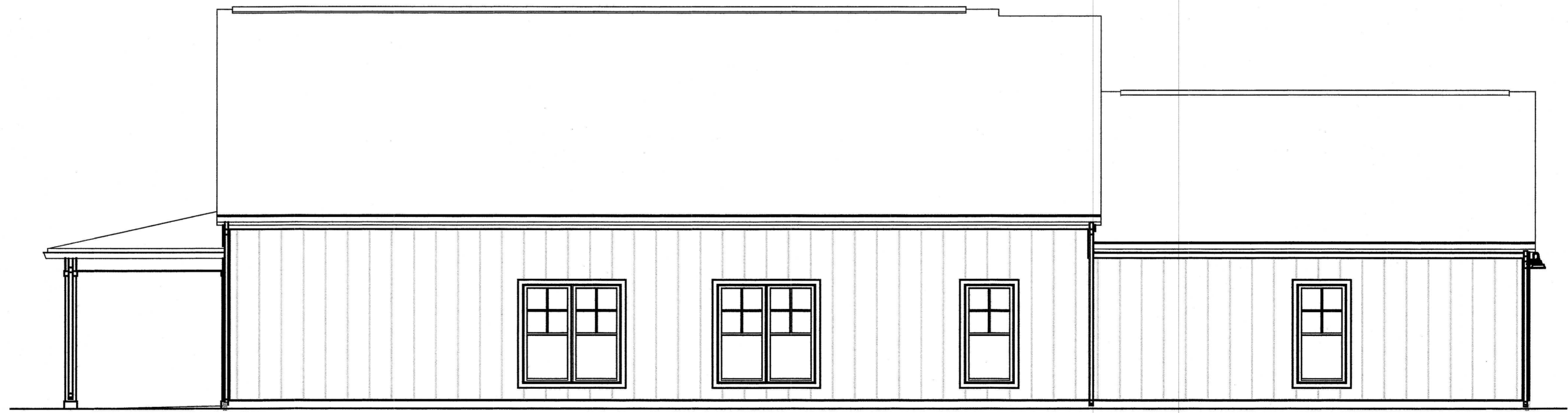
EAST



SOUTH
UNIT 37
2401 TORINO DR
(UNIT TYPE COTTAGE 2)



WEST



NORTH

Elevations

DEAN A. WENZ
ARCHITECTS

323 N ARDMORE ROAD
BEXLEY, OHIO 43209
(614) 239-6868
FAX (614) 239-9868

Fairway Cottages at Catawba Island Club
Unit Owners Association, Inc.
Documentation Drawings
Fourth Amendment

Architect Project Number
2020-046A

Sheet Number
10 of 10