

Curve Table					
Curve #	Radius	Delta	Chord Bearing	Chord Length	Length
C6	180.00'	7°42'00"	S 13° 57' 08" W	24.17'	24.19'
C7	120.00'	14°51'25"	S 10° 22' 25" W	31.03'	31.12'
C56	330.00'	9°51'00"	S 01° 58' 47" E	56.66'	56.73'
C57	270.00'	9°51'00"	N 01° 58' 47" W	46.36'	46.42'

Line Table		
Line #	Direction	Length
L1	N 70° 36' 18" E	64.87'
L2	S 87° 03' 19" E	114.22'
L3	S 02° 56' 43" W	46.98'
L4	S 06° 54' 17" E	27.98'
L5	N 87° 03' 19" W	123.87'
L6	N 02° 56' 43" E	131.00'

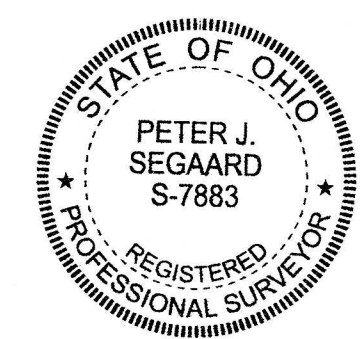
Line Table		
Line #	Direction	Length
L7	S 87° 03' 23" E	101.17'
L8	S 02° 56' 31" W	86.21'
L9	S 06° 54' 25" E	43.98'
L10	S 83° 05' 35" W	101.17'
L11	N 06° 54' 17" W	29.45'
L12	N 02° 56' 43" E	71.64'

- REFERENCES:
- [A] FAIRWAY COTTAGES AT CATAWBA ISLAND CLUB INITIAL DECLARATION P.V. 74, PG. 122
 - [B] FAIRWAY COTTAGES AT CATAWBA ISLAND CLUB FIRST AMENDMENT P.V. 74, PG. 152

- REFERENCES:
- COUNTY DEED/OFFICIAL RECORD BOOKS AND PAGES AS SHOWN.
 - OTTAWA COUNTY SURVEY RECORDS:
 4-5-265 4-5-271 CI-S3-L3-00227
 CI-S3-L4-00018 CI-S3-L4-00073
 CI-S3-L4-00074 CI-S3-L4-00079

- LEGEND
- MONUMENT FOUND
 - R/W RIGHT-OF-WAY
 - P.O.B. POINT OF BEGINNING
 - P.O.C. POINT OF COMMENCEMENT
 - SECOND AMENDMENT AREA

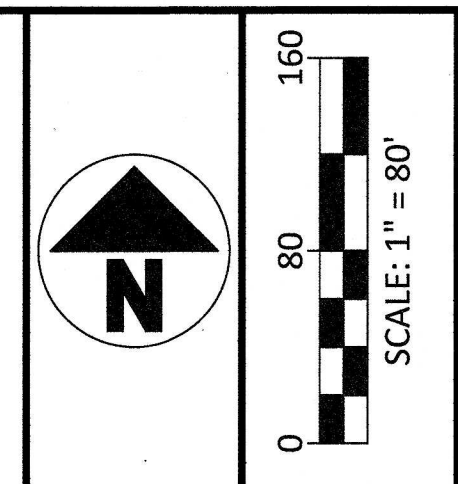
20240002638 05/01/2024 03:39 PM
 Filed for Record in OTTAWA County, Ohio
 Nathan J. Daniels Rec Fees: \$998.20
 OR Vol 74 Pgs 182 - 195



SURVEYOR'S CERTIFICATION:
 I HEREBY DECLARE THAT THE DRAWING ACCURATELY REFLECTS THE LOCATION OF IMPROVEMENTS AND RECORDED EASEMENTS TO THE BEST OF MY KNOWLEDGE AND BELIEF.

P. J. Segard
 PETER J. SEGARD, P.S.
 OHIO PROFESSIONAL SURVEYOR NO. 7883

4.30.2024
 DATE



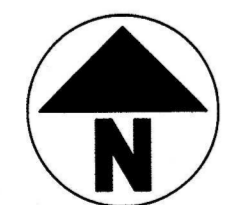
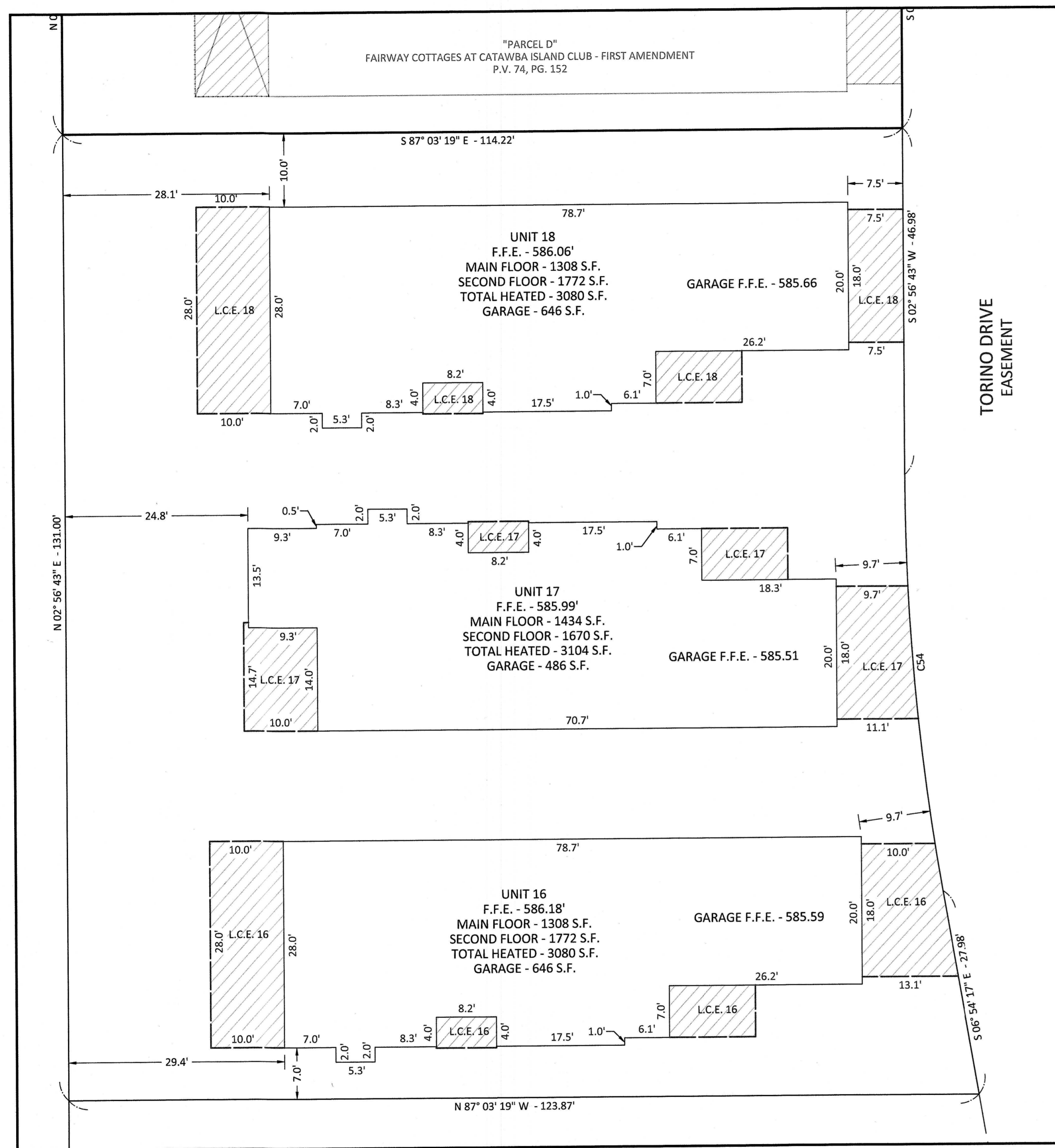
NO	REVISION	DATE
1		
2		
3		
4		
5		
6		
7		
8		
9		

DGI
 DGI CONSULTING ENGINEERS, LLC
 123 B MAPLE STREET
 PORT CLINTON, OH 43452
 PHONE: 419.635.7541
 www.dgi-td.com

**FAIRWAY COTTAGES
 AT CATAWBA ISLAND CLUB**
 PART OF SECTION 3, LOT 3,
 CATAWBA ISLAND TOWNSHIP, OTTAWA COUNTY, OHIO
SECOND AMENDMENT

FILED: 2024 Phase_Second Amendment.dwg
 JOB NO.: 23363-
 DRAWN BY: GSW
 ISSUED: 2024-04-17

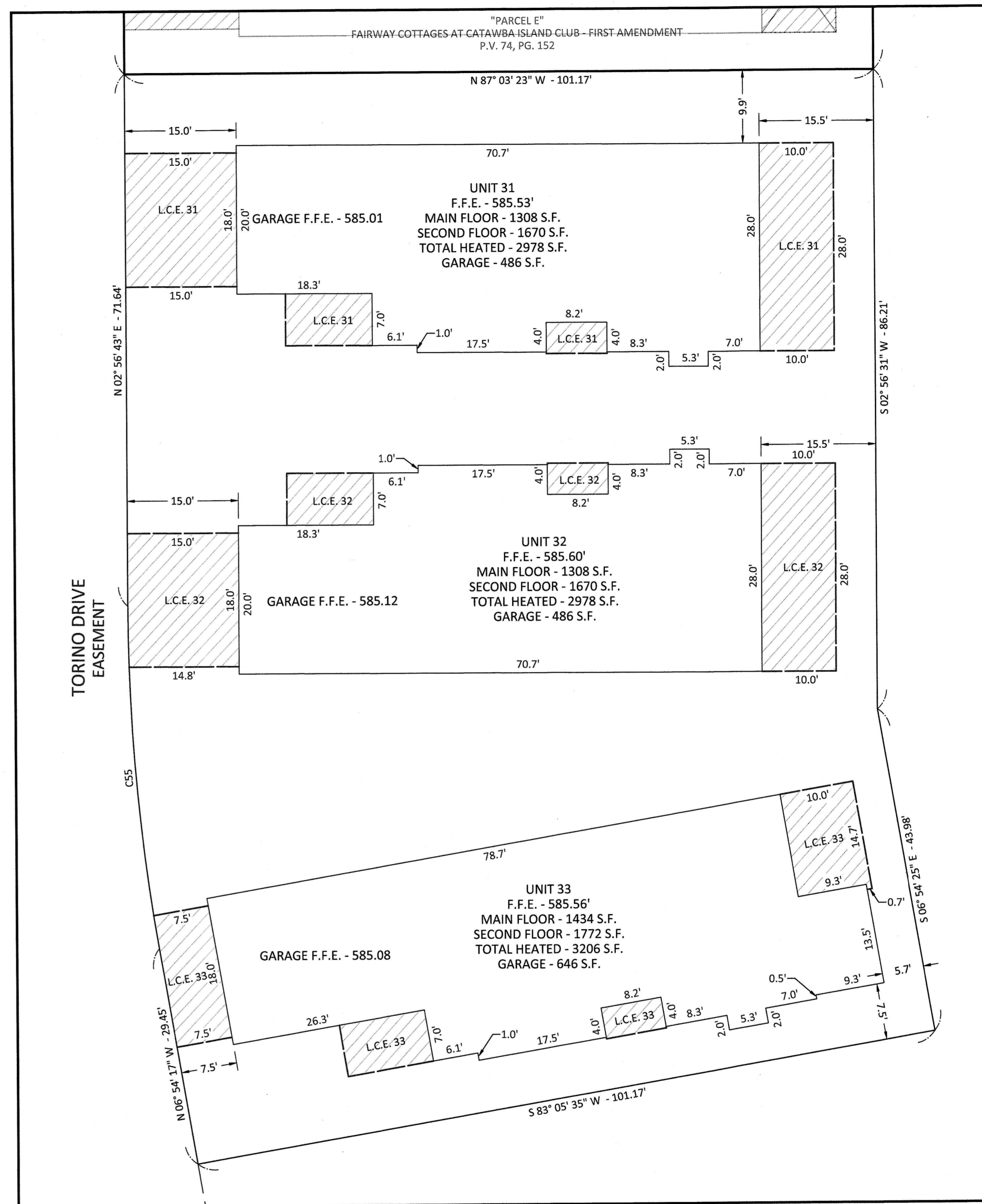
PLOTTED: Apr 30, 2024 - 3:31pm
 DRAWING: M:\23363 - Fairway Cottages - Condominium Documents\Survey\2024 Phase Second Amendment.dwg - AMEND 1 - DETAIL-1-22x34



SECOND AMENDMENT - PARCEL "F"
 SCALE: 1" = 10'

LEGEND
 P.O.B. POINT OF BEGINNING
 F.F.E. FINISHED FLOOR ELEVATION
 L.C.E.# LIMITED COMMON ELEMENT

Curve Table					
Curve #	Radius	Delta	Chord Bearing	Chord Length	Length
C54	330.00'	9°51'00"	S 01° 58' 47" E	56.66'	56.73'
C55	270.00'	9°51'00"	N 01° 58' 47" W	46.36'	46.42'



SECOND AMENDMENT - PARCEL "G"
 SCALE: 1" = 10'

DGL CONSULTING ENGINEERS, LLC 123 B MAPLE STREET PORT CLINTON, OH 43452 PHONE: 419.635.7541 www.dgl-td.com	
FAIRWAY COTTAGES AT CATAWBA ISLAND CLUB PART OF SECTION 3, LOT 3, CATAWBA ISLAND TOWNSHIP, OTTAWA COUNTY, OHIO	SECOND AMENDMENT EXHIBIT B
JOB NO.: 23363- DRAWN BY: GSW ISSUED: 2024-04-17	
2/2	