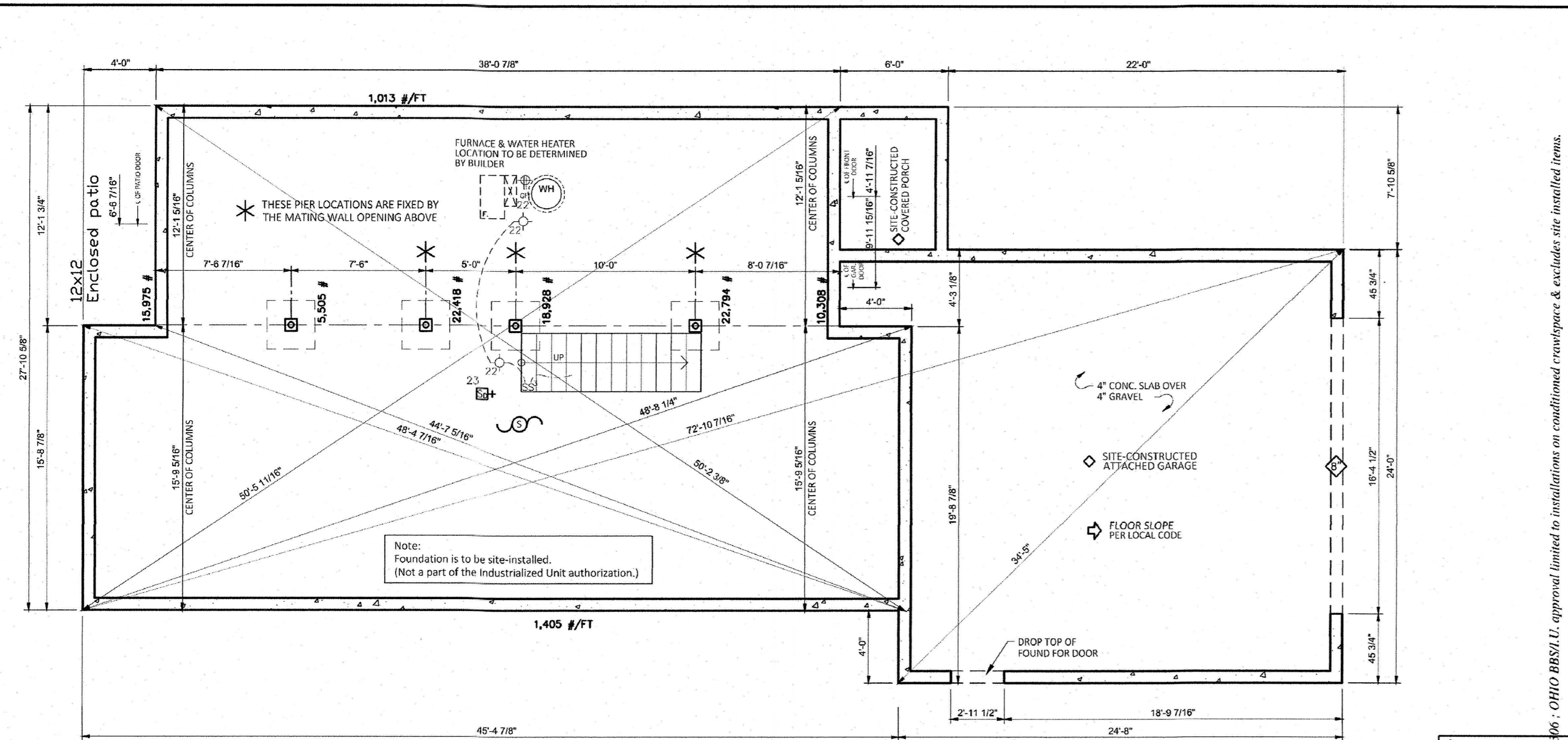


# East Pointe at Catawba Bay Condominium, Ninth Amendment



CT37-12671.DWG  
BKC 04/28/2022

John & Laura Macias  
ALZO HOMES

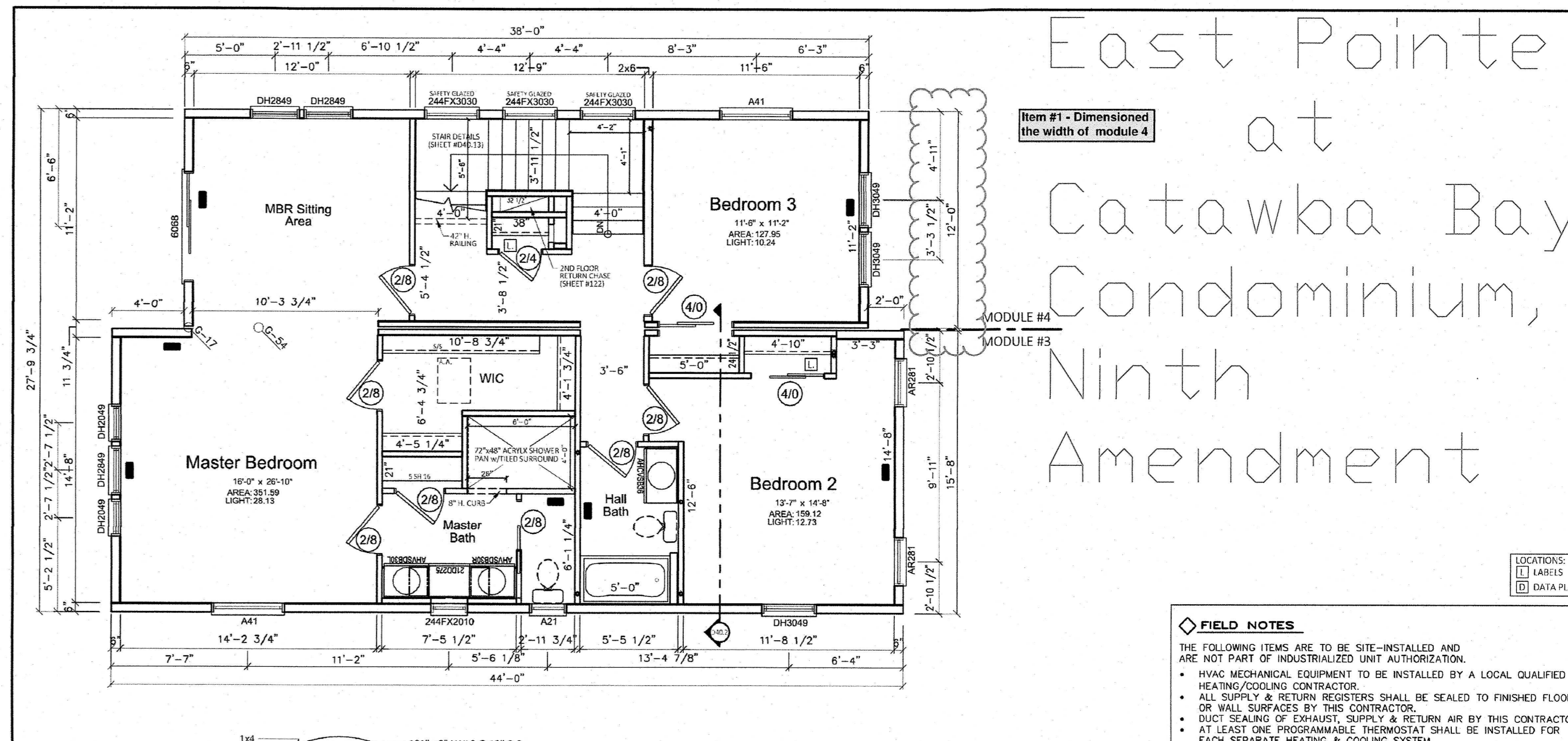
SCALE: 3/16" = 1'-0"

REVISION DATE: 6/14/22

UNIBILT Custom Two-Story Model CT37 20

Two Story Total SQ FT

Story	Base Area
1st Story	1182.21
2nd Story	1150.8
<b>Total</b>	<b>2333.0</b>



CT37-12671.DWG  
BKC 04/28/2022

John & Laura Macias  
ALZO HOMES

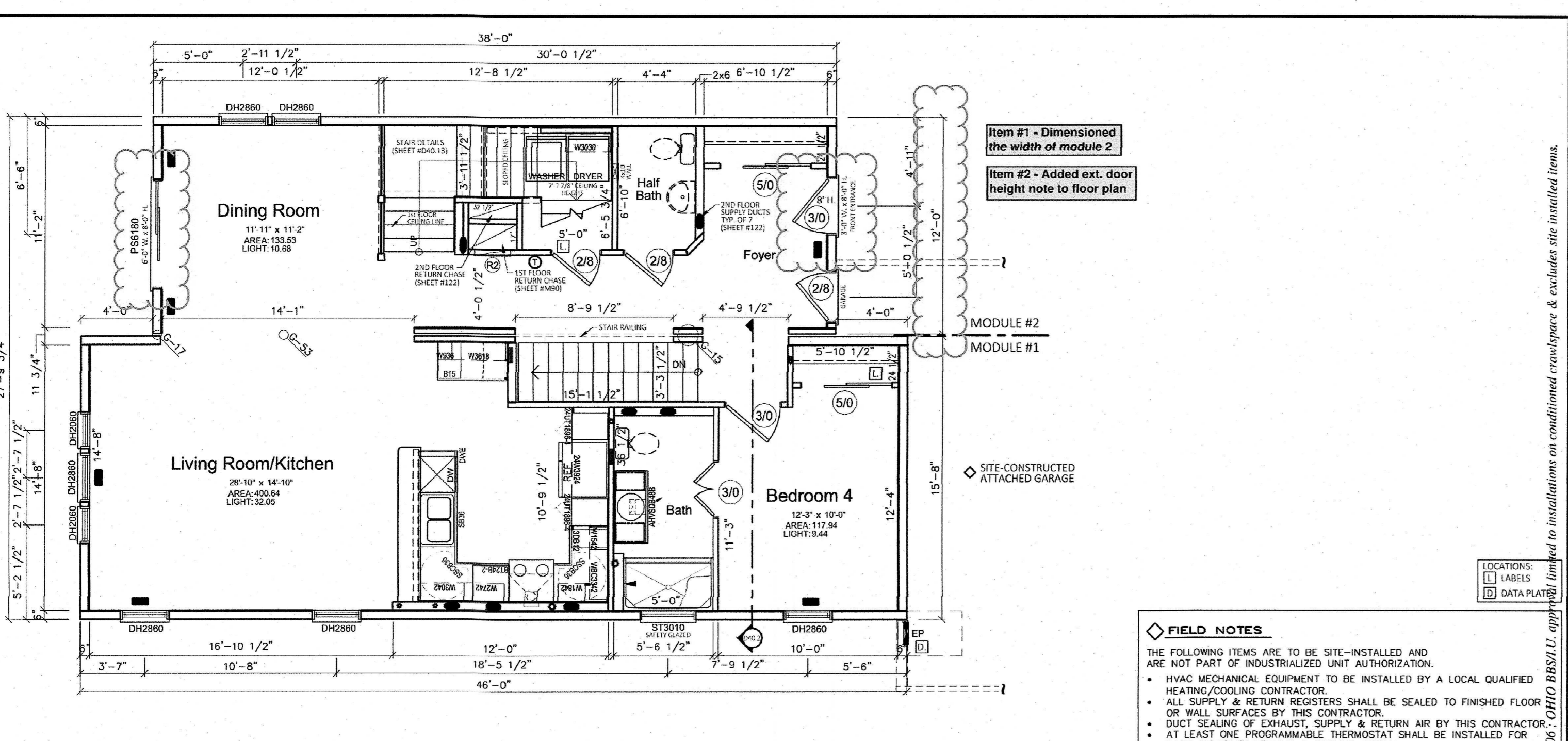
SCALE: 3/16" = 1'-0"

REVISION DATE: 6/14/22

UNIBILT Custom Two-Story Model CT37 12

Two Story Total SQ FT

Story	Base Area
1st Story	1182.21
2nd Story	1150.8
<b>Total</b>	<b>2333.0</b>



CT37-12671.DWG  
BKC 04/28/2022

John & Laura Macias  
ALZO HOMES

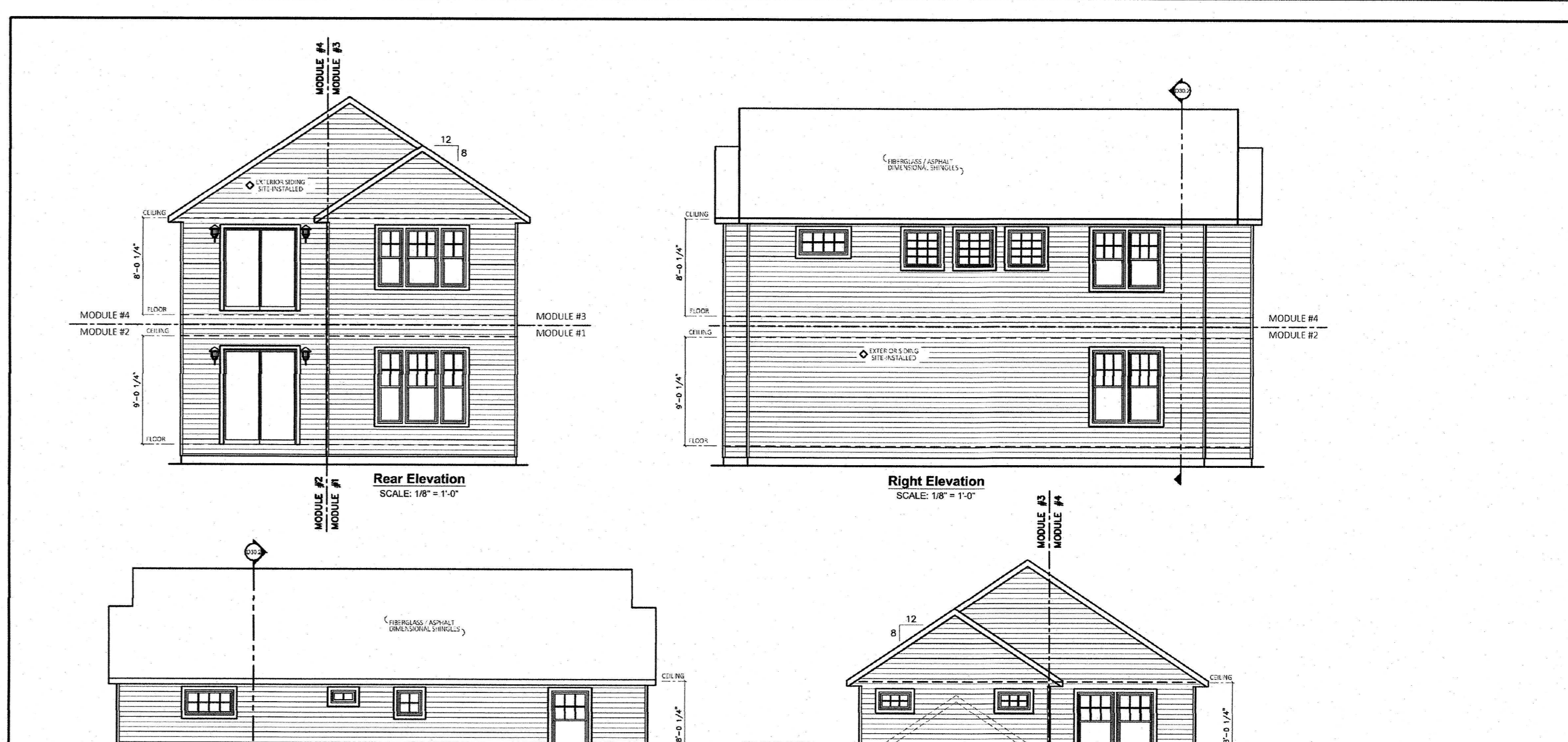
SCALE: 3/16" = 1'-0"

REVISION DATE: 6/14/22

UNIBILT Custom Two-Story Model CT37 10

Two Story Total SQ FT

Story	Base Area
1st Story	1182.21
2nd Story	1150.8
<b>Total</b>	<b>2333.0</b>



CT37-12671.DWG  
BKC 04/28/2022

John & Laura Macias  
ALZO HOMES

SCALE: 1/8" = 1'-0"

REVISION DATE: 6/14/22

UNIBILT Custom Two-Story Model CT37 70