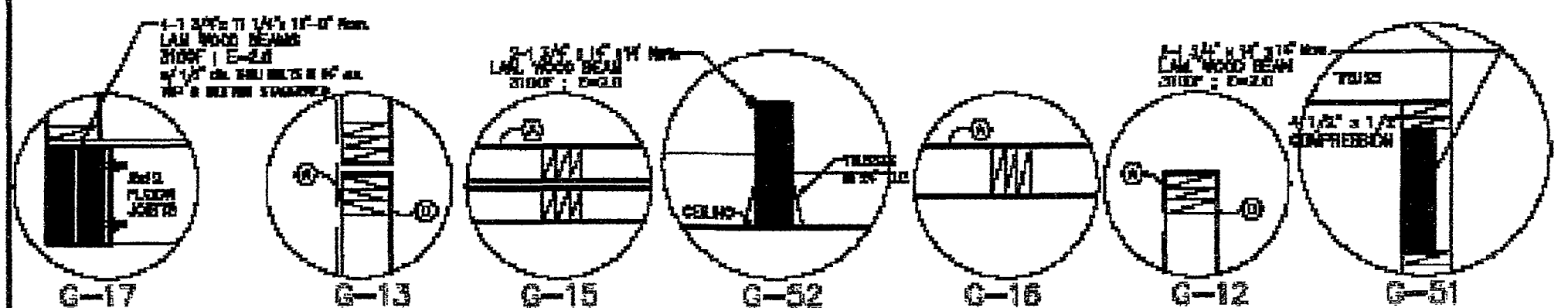


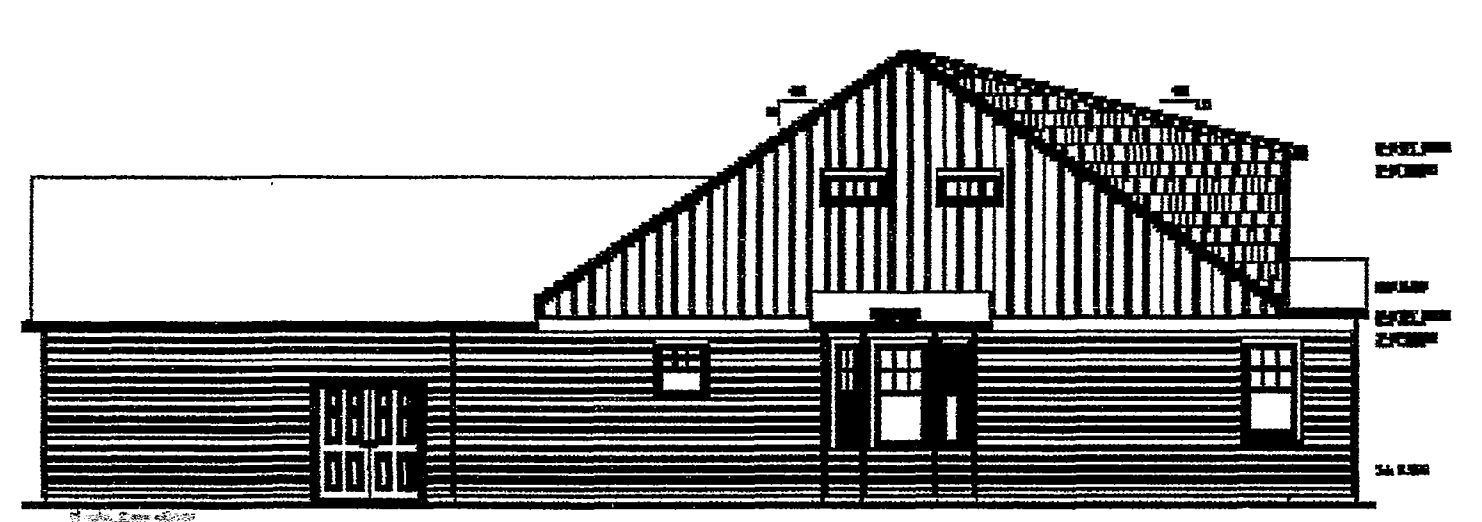
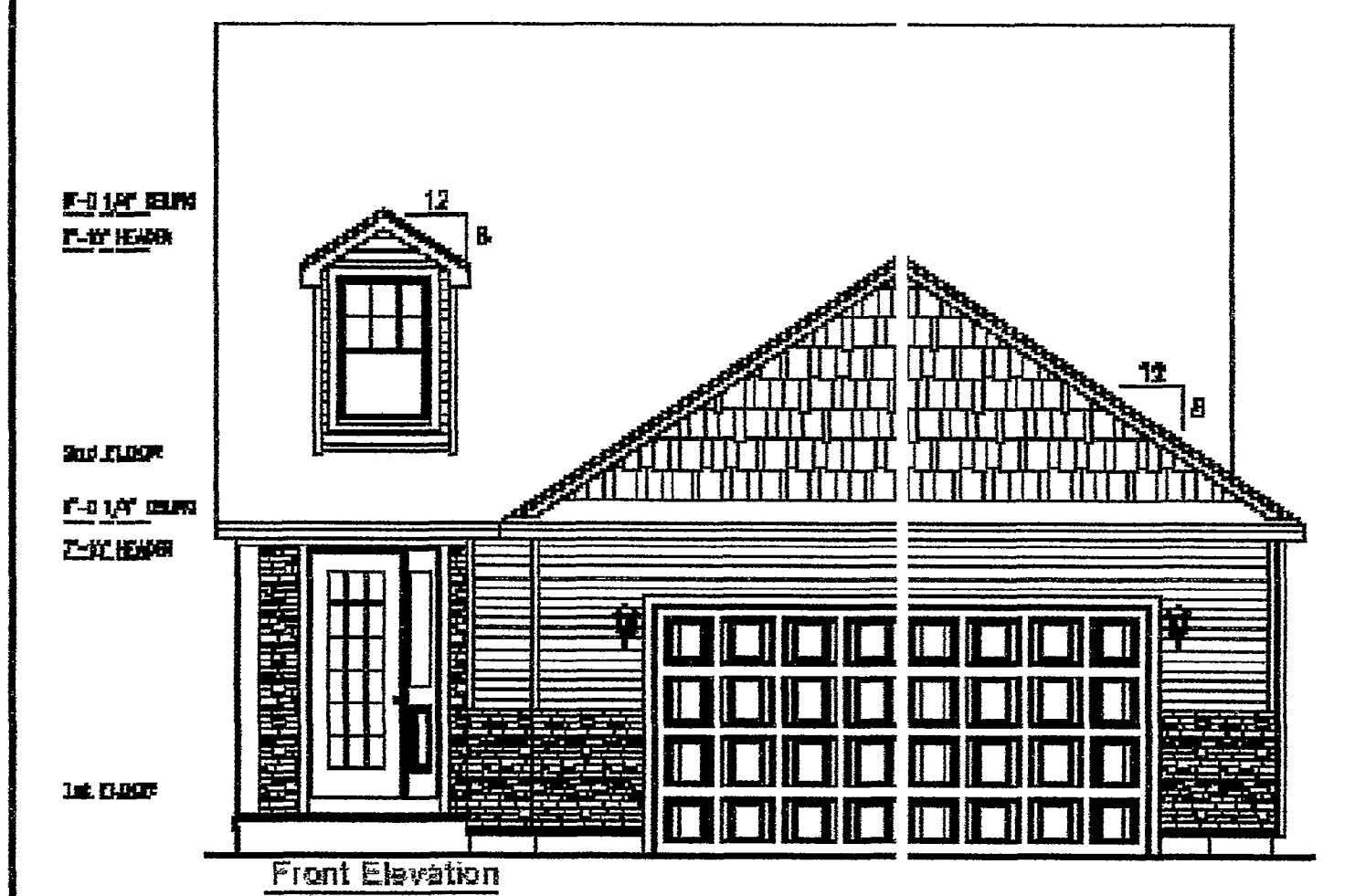
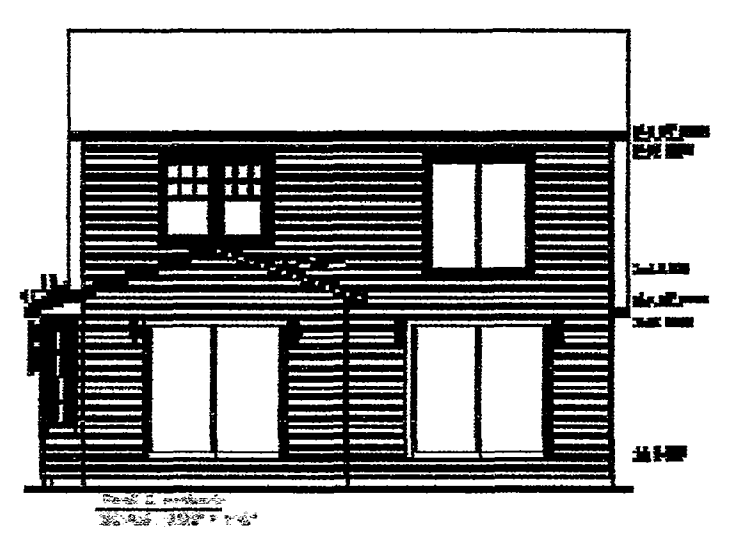
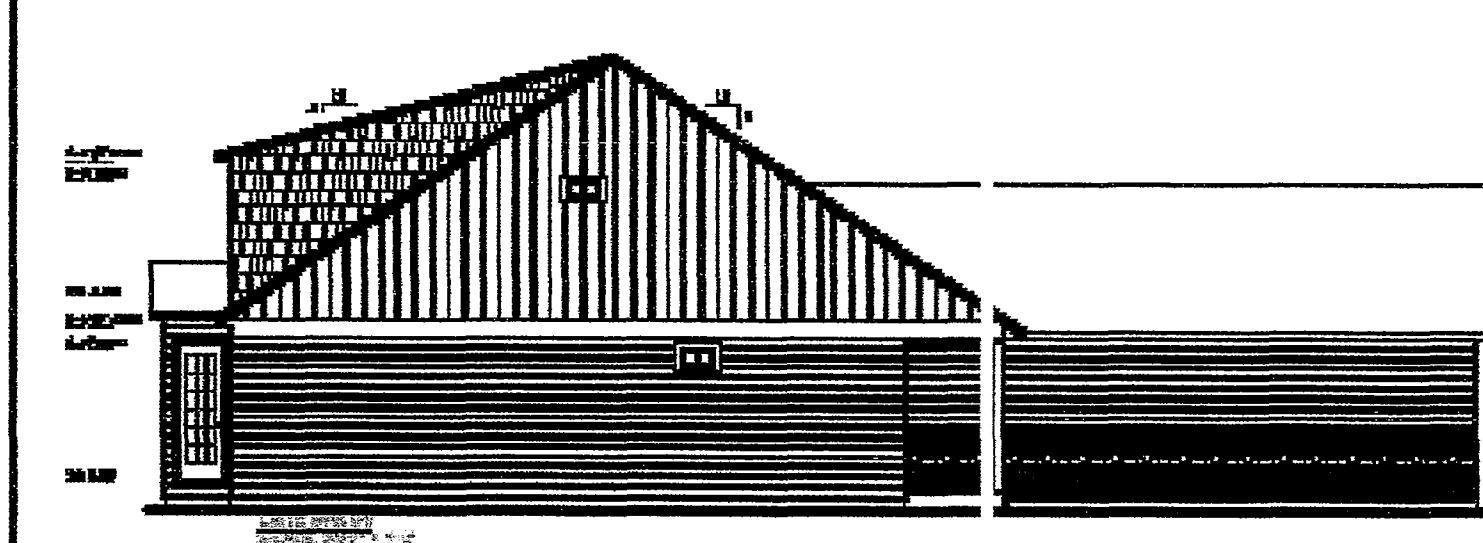
Total SQ FT	
Story	Base Area
1st story	1500.5
2nd story	127.02
3rd story	101.587
Unlt. Area System	1247.892

12508

LOCATIONS
 LABELS
 DATA PLATE

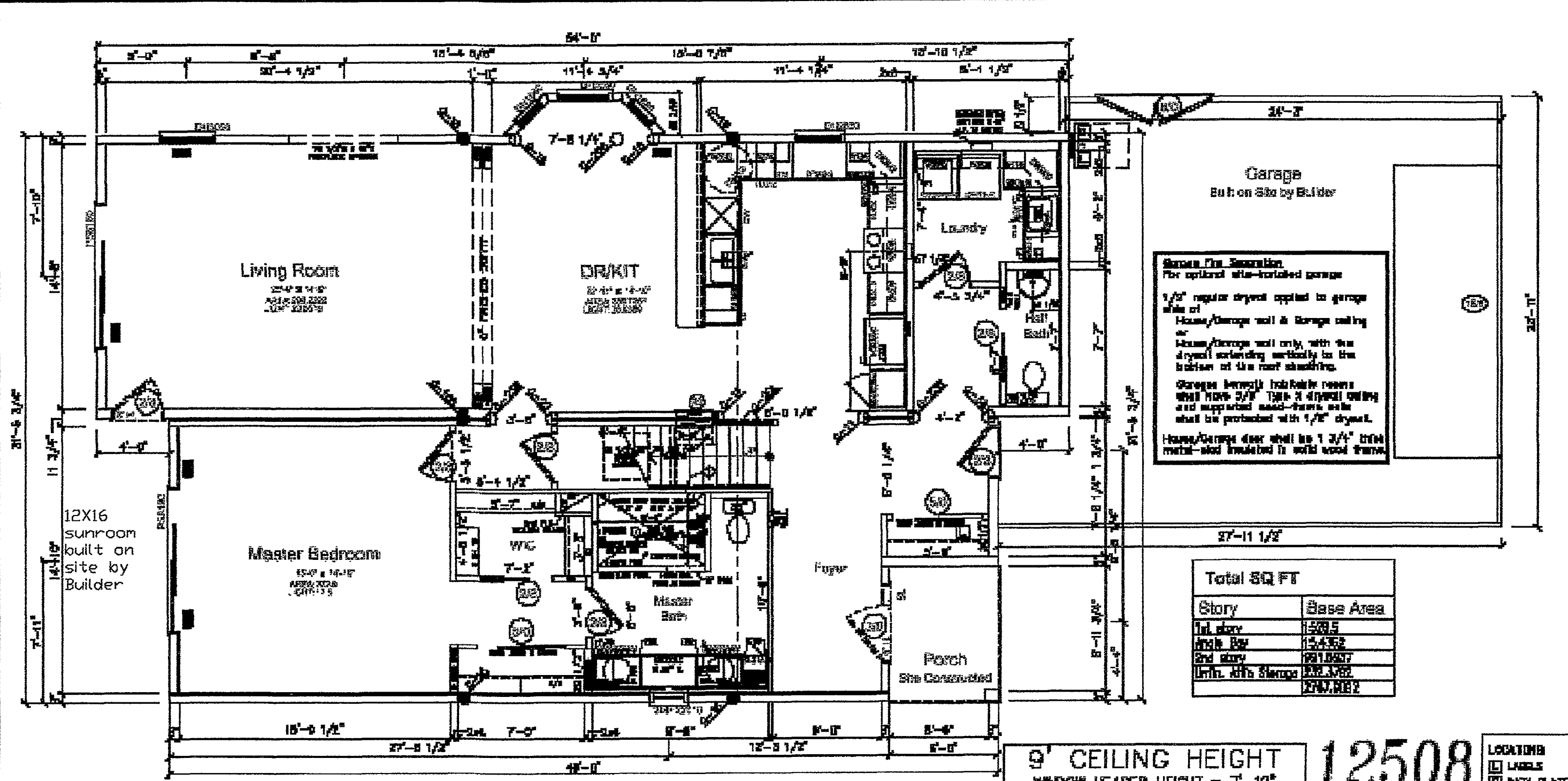


- FIELD WORK**
- 1/2" drywall
 - 1/2" drywall
 - 1/2" drywall edge
 - 3/4" Furr' roll with metal mesh back
 - 1/2" mesh installed by the field work crew applying field work headers
- FIELD NOTES**
- THE FOLLOWING ITEMS ARE TO BE SITE-INSTALLED AND ARE NOT PART OF INDUSTRIALIZED UNIT AUTHORIZATION.
- ALL CONSTRUCTION BELOW THE INDUSTRIALIZED UNIT PERFORM AIR HEATING SYSTEM WATER HEATER
- EXTERIOR SIDING ON SIDE ELEVATIONS
- EXTERIOR SIDING ON FRONT ELEVATION
- WATER BAY
- FORNISH GARAGE



- FIELD NOTES**
- THE FOLLOWING ITEMS ARE TO BE SITE-INSTALLED AND ARE NOT PART OF INDUSTRIALIZED UNIT AUTHORIZATION.
- ALL CONSTRUCTION BELOW THE INDUSTRIALIZED UNIT EXTERIOR SIDING ON SIDE ELEVATIONS EXTERIOR SIDING ON FRONT ELEVATION
- FRONT DOOR
- IN SIDE DOOR
- IN EXTERIOR ROOF
- WATER BAY
- FORNISH GARAGE
- GARAGE VALLEY

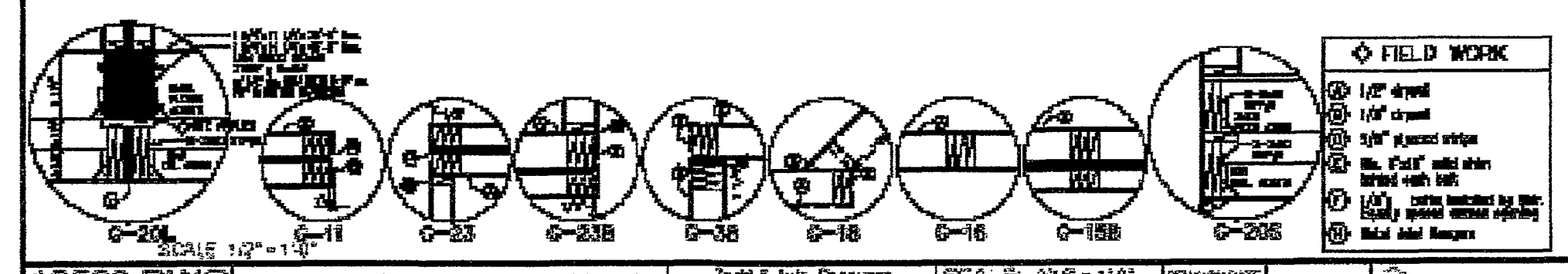
12508



Total SQ FT	
Story	Base Area
1st story	1500.5
2nd story	127.02
3rd story	101.587
Unlt. Area System	1247.892

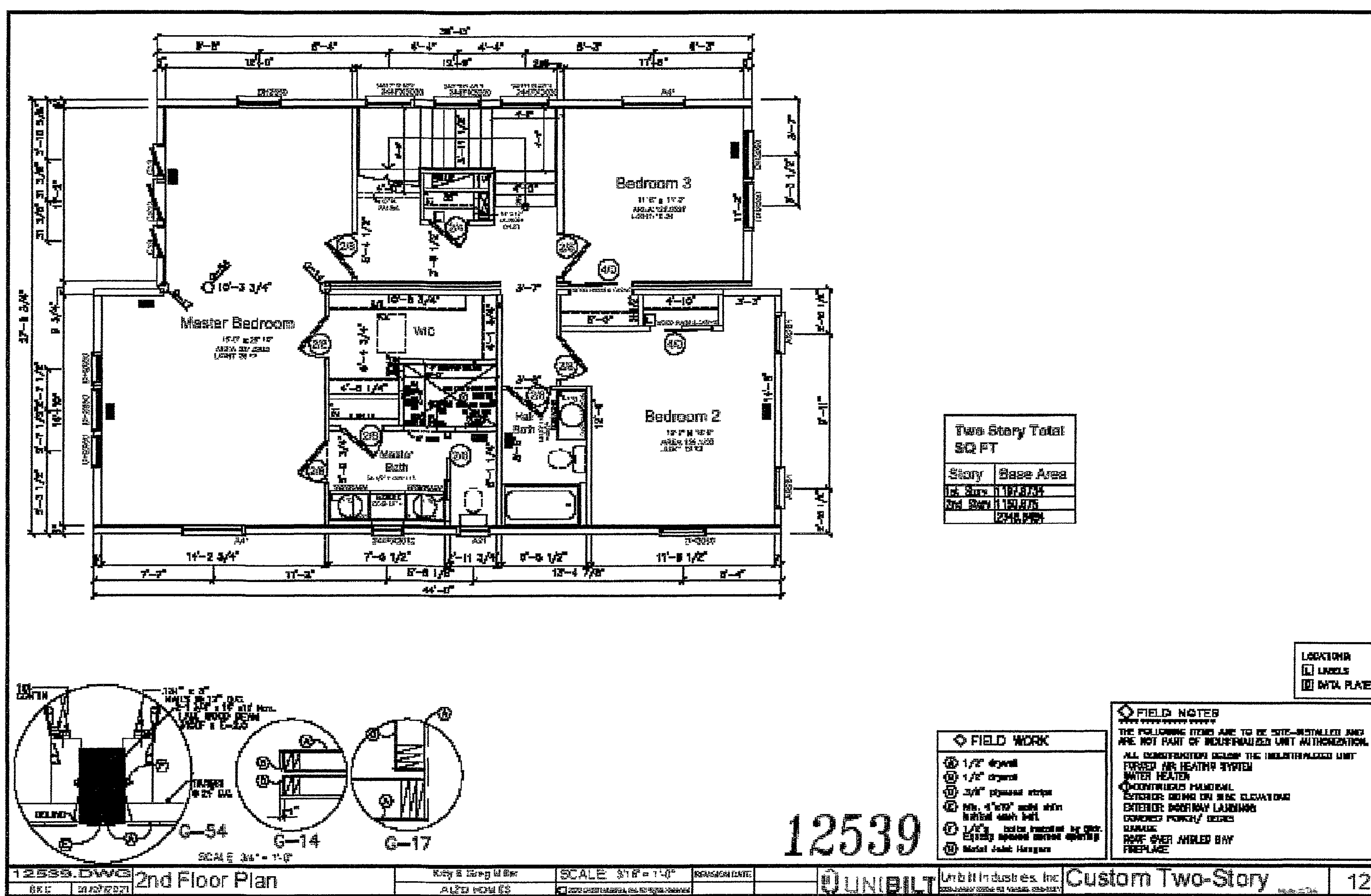
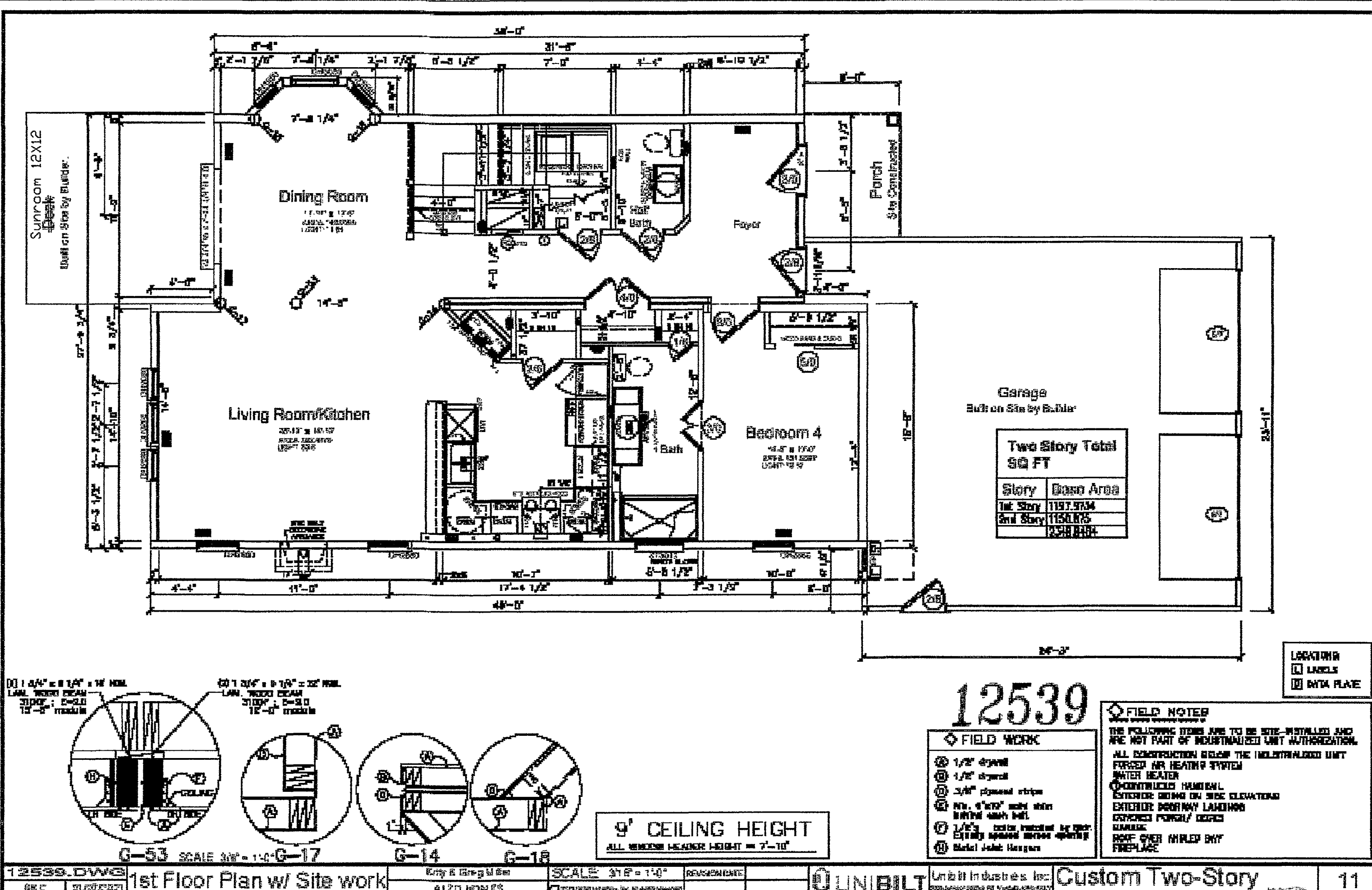
9' CEILING HEIGHT
 WINDOW HEADER HEIGHT = 7'-10" 12508

LOCATIONS
 LABELS
 DATA PLATE



- FIELD WORK**
- 1/2" drywall
 - 1/2" drywall
 - 1/2" drywall edge
 - 3/4" Furr' roll with metal mesh back
 - 1/2" mesh installed by the field work crew applying field work headers
- FIELD NOTES**
- THE FOLLOWING ITEMS ARE TO BE SITE-INSTALLED AND ARE NOT PART OF INDUSTRIALIZED UNIT AUTHORIZATION.
- ALL CONSTRUCTION BELOW THE INDUSTRIALIZED UNIT PERFORM AIR HEATING SYSTEM WATER HEATER
- EXTERIOR SIDING ON SIDE ELEVATIONS
- EXTERIOR SIDING ON FRONT ELEVATION
- WATER BAY
- FORNISH GARAGE

East Pointe at Catawka Bay
 CONDOMINIUM
 FIFTH Amendment
 Site L-L 5423 Walls Channel Drive



East Pointe at Catawba Bay
CONDOMINIUM
FIFTH Amendment
Site M-M 5417 Walls Channel Drive
and
Site O-O 5405 Walls Channel Drive