

LEGEND

[Symbol] LIMITED COMMON AREA

[Symbol] RESTRICTED COMMON AREA - LOT LARD

[Symbol] COMMON AREA

[Symbol] FENCE LINE

● GAS METER

○ TELEPHONE LINE

○ DRIVE (S.D.) & DRIVE (RESERVED)

○ DRIVE - DRIVE (RESERVED)

○ SECURITY LIGHT

○ CURB AND SIDEWALK

○ DRIVE (RESERVED)

○ DRIVE (RESERVED)

Vol. 16 pg. 1

PLAT OF

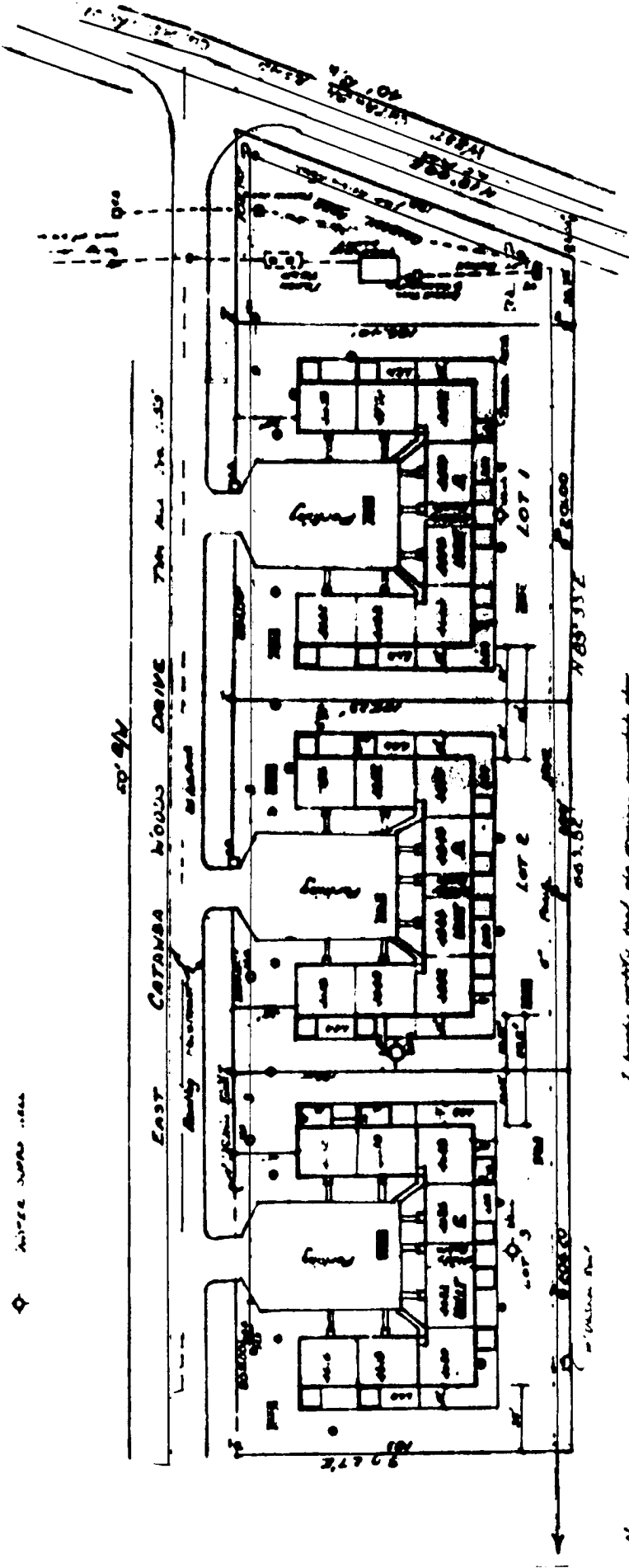
CATAWBA WOODS CONDOMINIUM

IN LOT NOS. 1, 2, 3 AND RESERVED AREA IN

CATAWBA WOODS APARTMENTS SUBDIVISION CATAWBA ISLAND TOWNSHIP

OTTAWA COUNTY, OHIO

APPROVED FOR RECORDATION
 WILLIAM J. HARRIS
 75 WEST 100th Street
 Cleveland, Ohio 44102
 216-831-1111



I hereby certify that this drawing accurately shows
 the building as being constructed.

Note: All areas shown are reserved for common
 use of the owners. Detailed site plan drawings
 are not for these parties as shown on these plans.

W. J. Harris
 Architect/Engineer 528