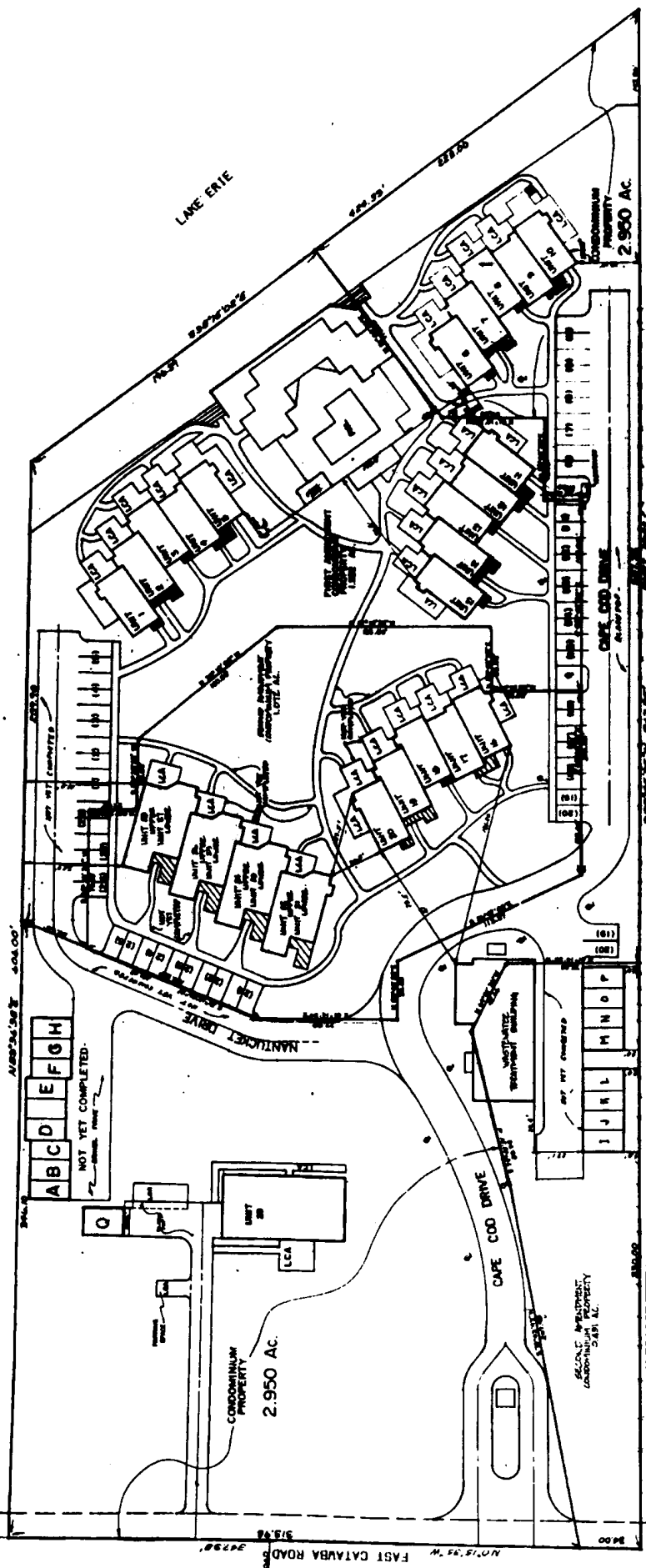


NORTH LAKE VILLAGE
& DORIS LAKE DRIVE
2.75 AC. 47
VOL. 204 PL. 148



LOT 10
VOL. 207 PL. 214
VOL. 207 PL. 578

LOT 18
VOL. 207 PL. 1081

SECOND ASSIGNMENT
TO
CONDOMINIUM DRAWINGS FOR
CATWBA SHORES NORTH CONDOMINIUM

LOT 11
VOL. 207 PL. 200

LOT 9
VOL. 207 PL. 204

LOT 8
VOL. 207 PL. 204

IN LOT 6
FAIRWAY DRIVE 3
CATWBA IS THE OTHER 20.

LEGEND

- LETTERS WITH A TRIANGULAR OR RECTANGULAR SHAPED SPACES SHOW THE LIMITED COMMON AREAS.
- UNIT DESIGNATIONS IN PARALLELOGRAM SHAPED SPACES, WHICH ARE LIMITED COMMON AREAS, ARE NOT NECESSARILY LCA DESIGNATED LIMITED COMMON AREAS.
- AREAS NOT DESIGNATED WITH UNIT DESIGNATIONS OR AS LIMITED COMMON AREAS ARE COMMON AREAS.
- DESIGNATED LIMITED COMMON AREAS.

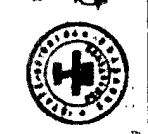
RECORDED
APR 23, 1987 1:17 PM
RECORDED
APR 23, 1987 1:20 PM
WILLIAM P. HANCOCK & COMPANY, INC.

NOT TO SCALE

WILLIAM P. HANCOCK & COMPANY, INC.
1000 WEST 10TH STREET
SUITE 200
DENVER, COLORADO 80202
TEL. 333-4444
FAX. 333-4444



WILLIAM P. HANCOCK & COMPANY, INC.
1000 WEST 10TH STREET
SUITE 200
DENVER, COLORADO 80202
TEL. 333-4444
FAX. 333-4444

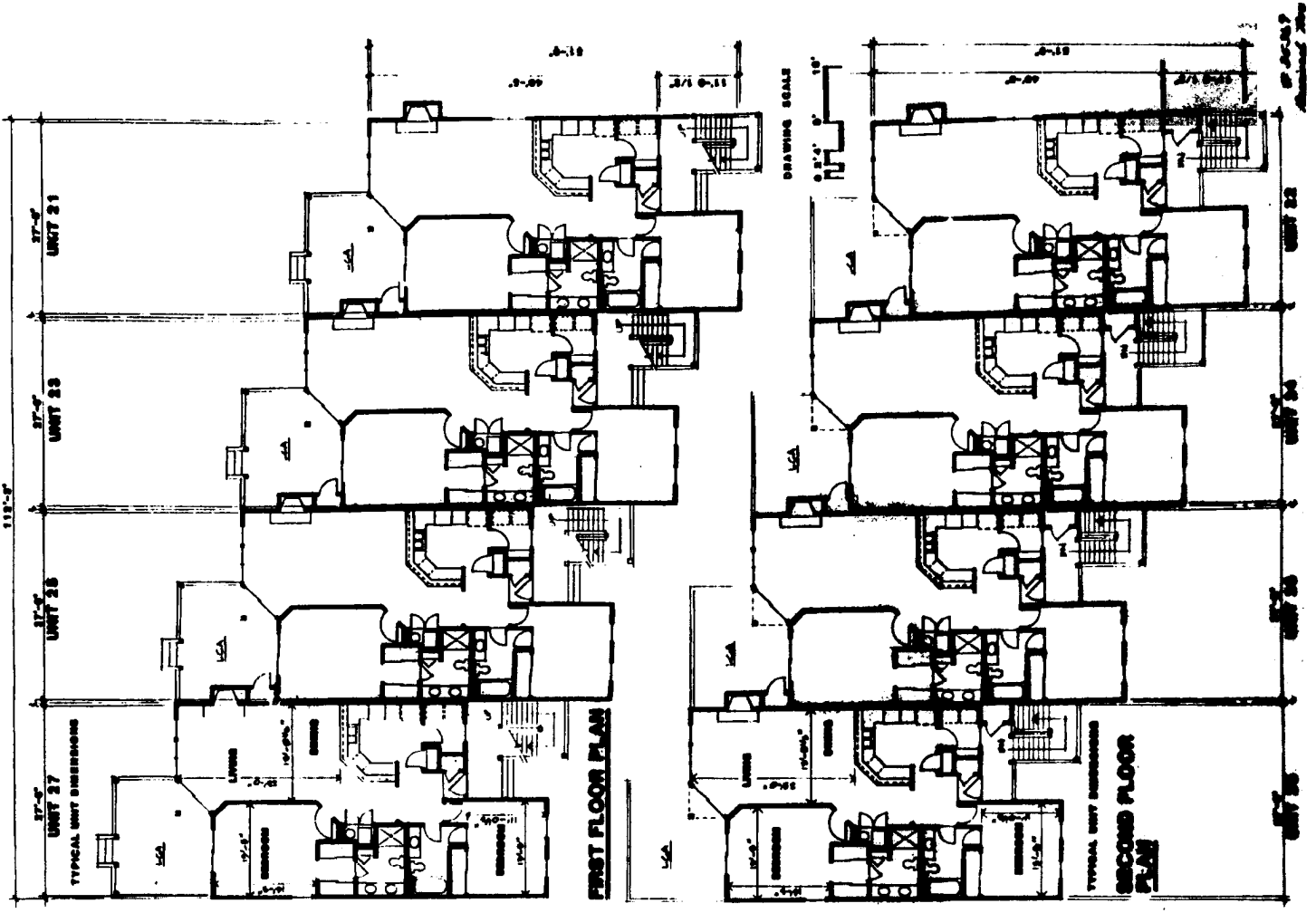
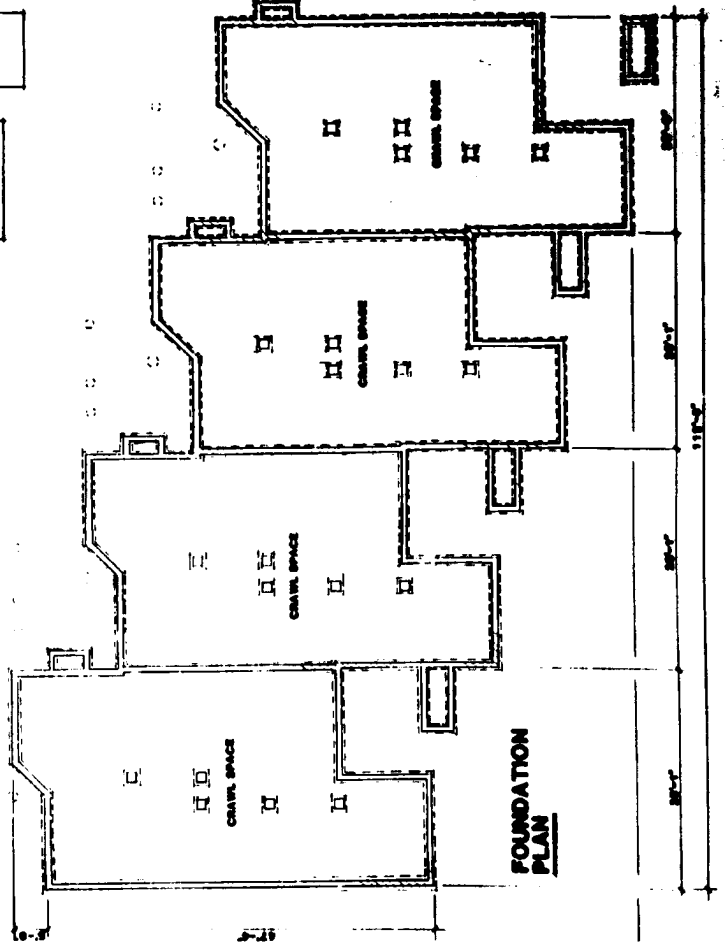
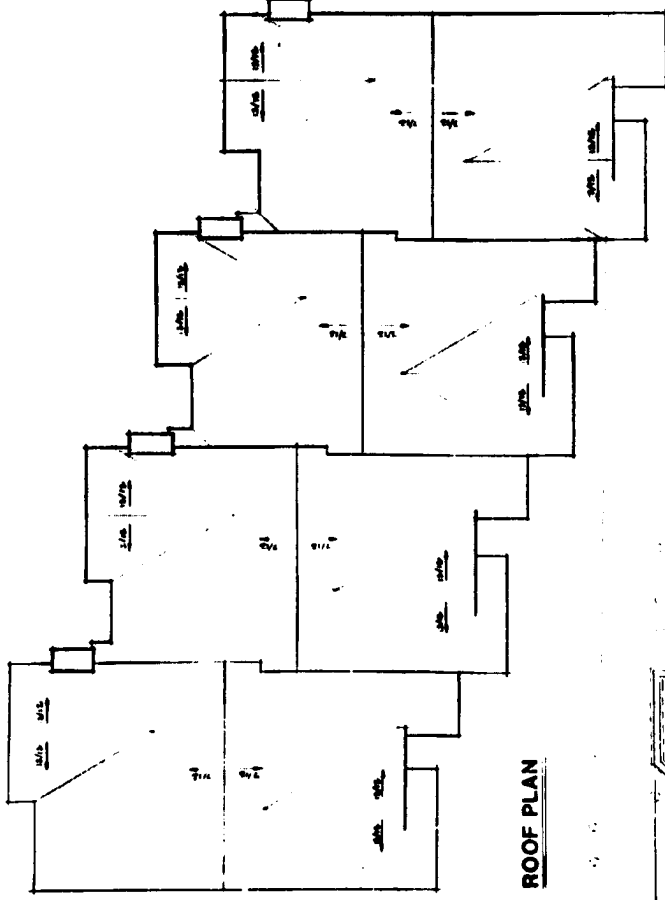


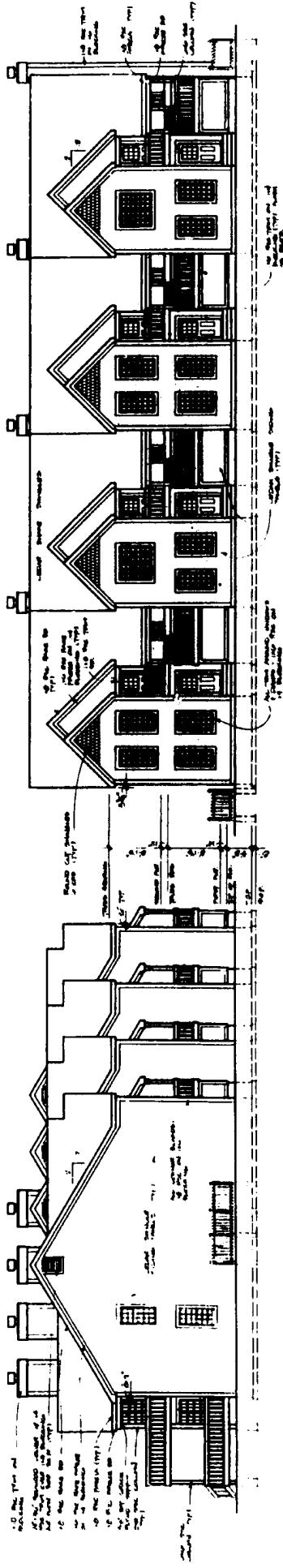
WILLIAM P. HANCOCK & COMPANY, INC.
1000 WEST 10TH STREET
SUITE 200
DENVER, COLORADO 80202
TEL. 333-4444
FAX. 333-4444

WILLIAM P. HANCOCK & COMPANY, INC.
1000 WEST 10TH STREET
SUITE 200
DENVER, COLORADO 80202
TEL. 333-4444
FAX. 333-4444

WILLIAM P. HANCOCK & COMPANY, INC.
1000 WEST 10TH STREET
SUITE 200
DENVER, COLORADO 80202
TEL. 333-4444
FAX. 333-4444

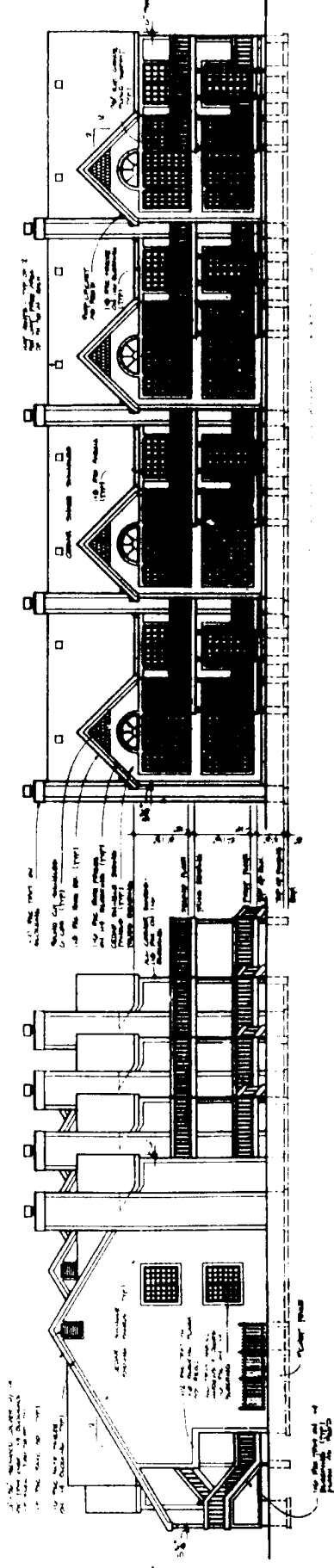
1. All work shall be in accordance with the latest editions of the Building Code of the City of Chicago and the National Building Code of the International Building Congress, Inc. (IBCC).
 2. All work shall be in accordance with the latest editions of the National Electrical Code (NEC) and the National Fire Protection Association (NFPA) Code.
 3. All work shall be in accordance with the latest editions of the National Mechanical Code (NMC) and the National Fire Protection Association (NFPA) Code.
 4. All work shall be in accordance with the latest editions of the National Plumbing Code (NPC) and the National Fire Protection Association (NFPA) Code.
 5. All work shall be in accordance with the latest editions of the National Fire Protection Association (NFPA) Code.





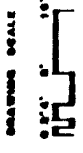
LEFT ELEVATION

FRONT ELEVATION

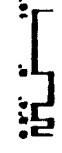


RIGHT ELEVATION

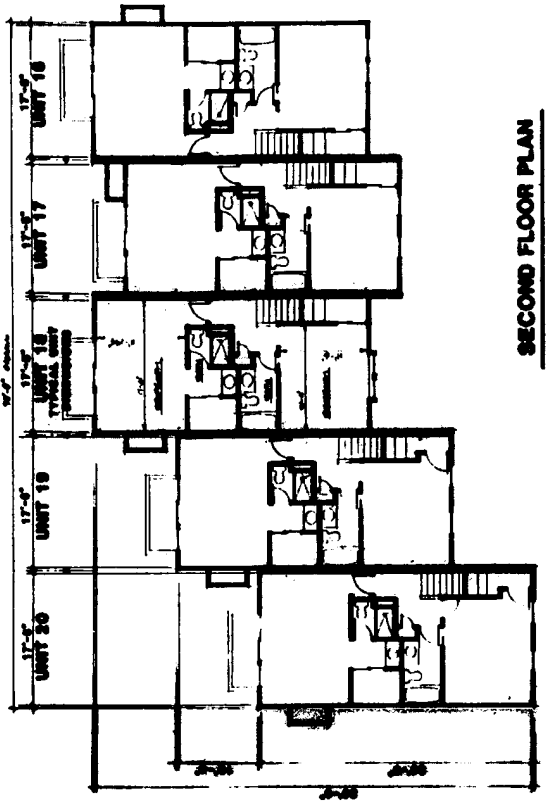
REAR ELEVATION



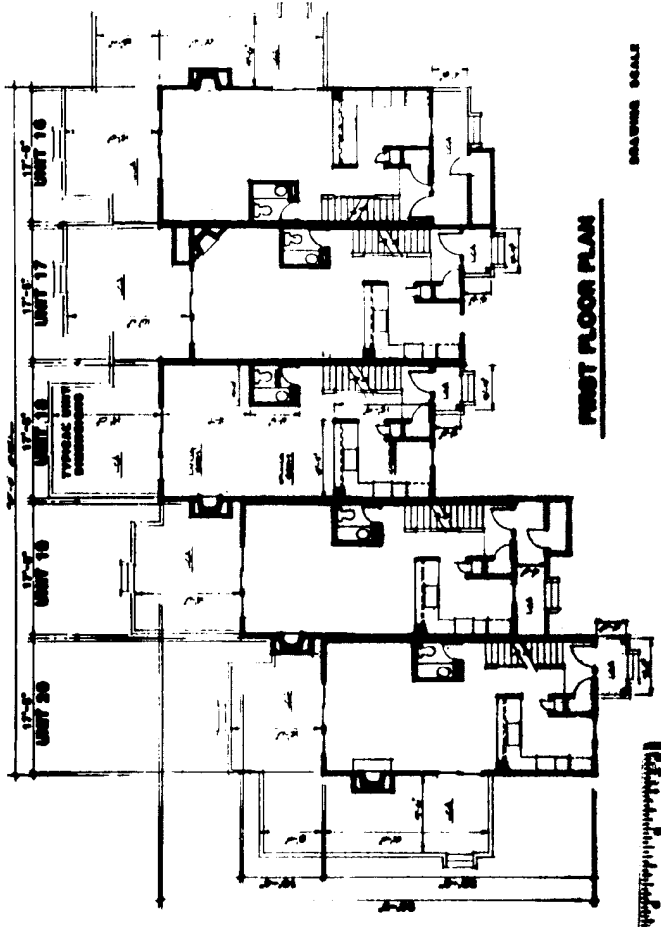
DRAWING SCALE



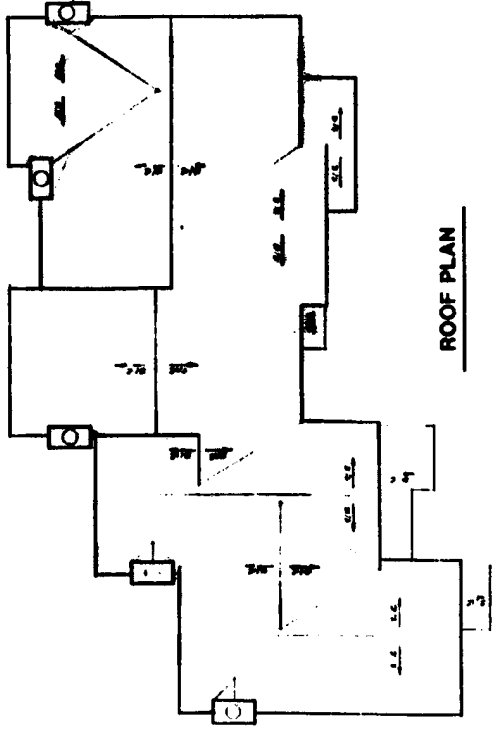
20-20257
 Revised March 1977 1:00 PM
 Revised Nov 23, 1977 10:00 AM
 William P. Hunsberger
 2007-10



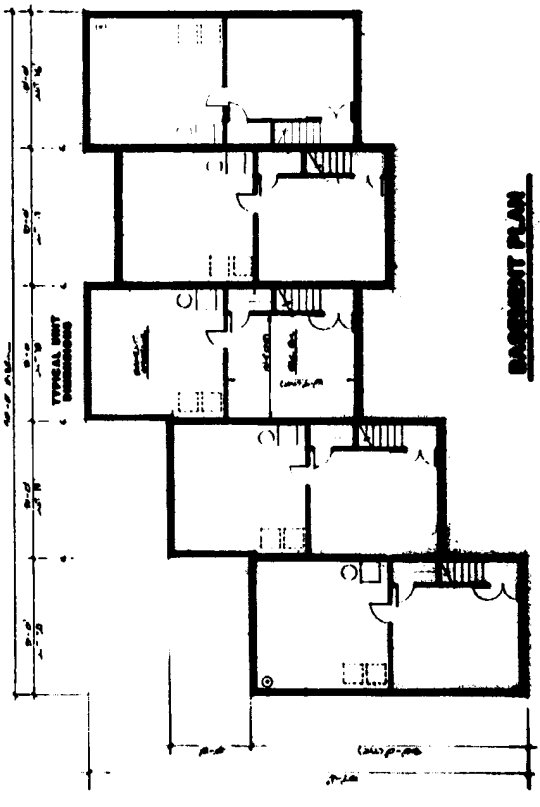
SECOND FLOOR PLAN



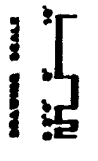
FIRST FLOOR PLAN



ROOF PLAN



BASMENT PLAN



20000
 Approved: [Signature] 1/27/74
 Drawn: [Signature] 1/27/74
 Checked: [Signature] 1/27/74
 Architect: [Signature]





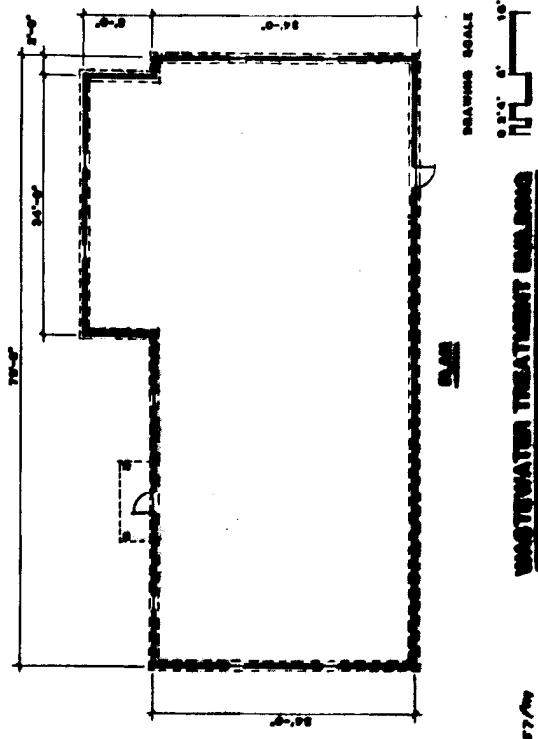
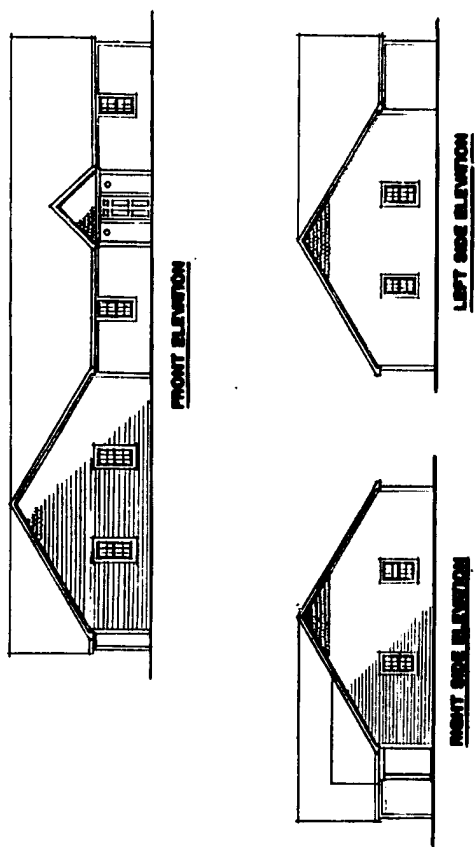
Copyright © 1987
 All drawings are the property
 of Steven - Gray - Inc. and
 shall not be used, displayed,
 or altered without the written
 consent of the architect.

CATAWBA SHORES NORTH
CATAWBA ISLAND, OHIO
SEWAGE TREATMENT PLANT / GARAGE

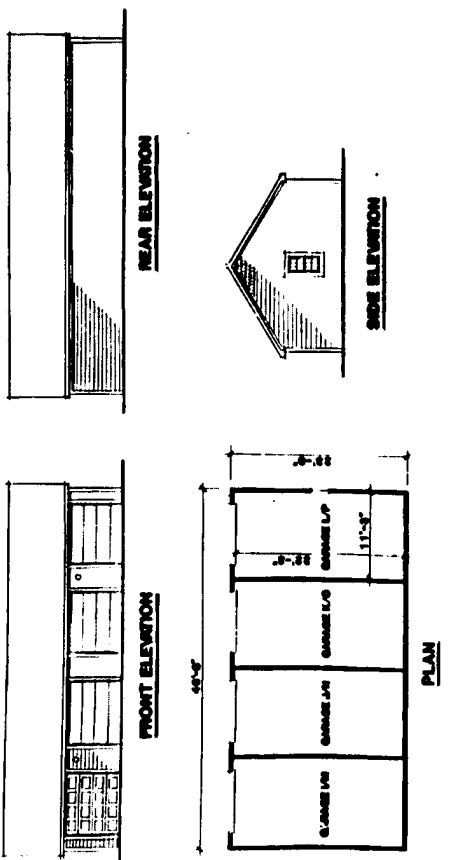


SECOND
 ALIGNMENT
 CONFORMANCE
 DRAWINGS
 6 of 6

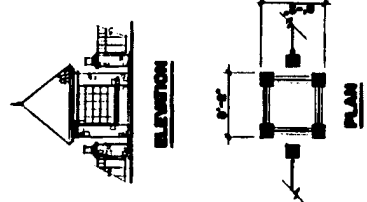
1E



85-369
 Approved 2/20/87 1:27/87
 Approved 2/20/87 1:27/87



GARAGE BUILDING



GATEHOUSE BUILDING

STEVEN - GRAY - TURNER
 ARCHITECTS & ENGINEERS
 10000 W. 10th Street
 Columbus, Ohio 43240
 (614) 291-1100