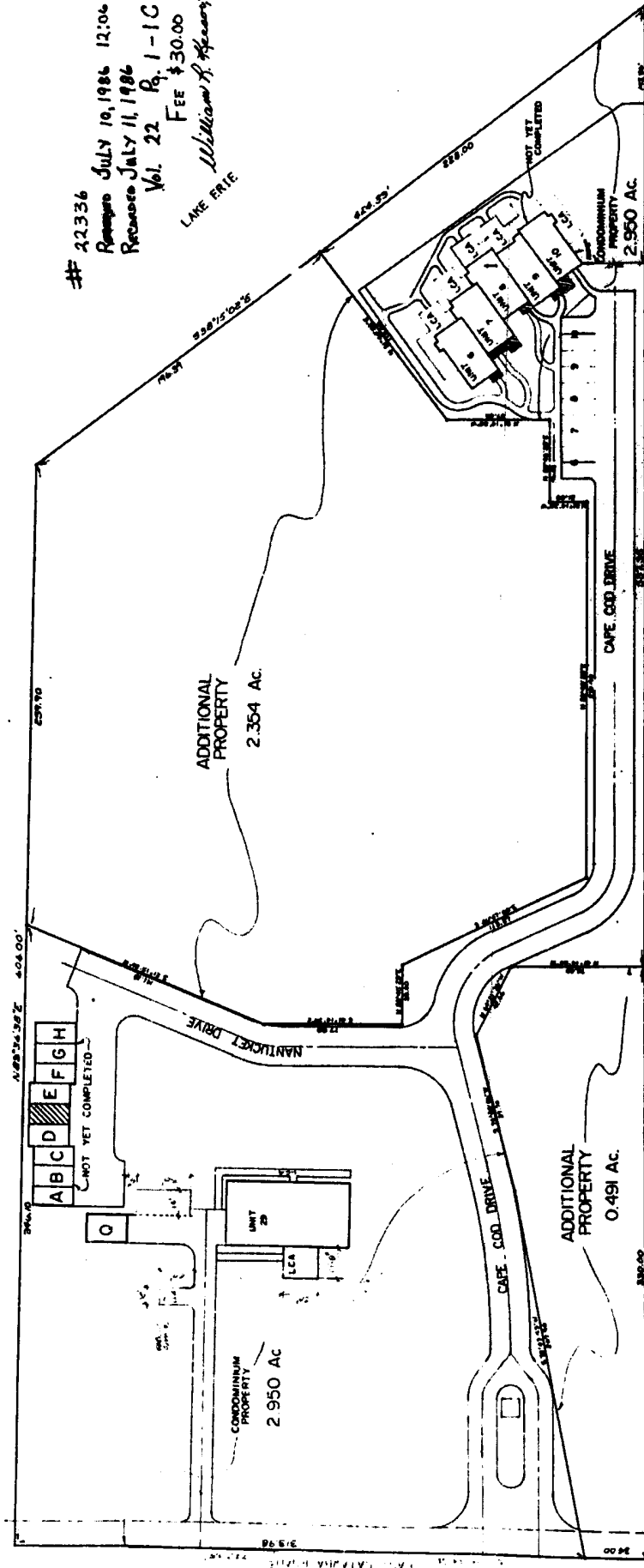


GARBER'S
 PROFESSIONAL SURVEYING SERVICE
 25 S. UNIVERSITY DELAWARE, DELE. 19804
 TEL. 304-441-1980

CONDOMINIUM DRAWINGS FOR
 CATAWBA SHORES NORTH
 CATAWBA ISLAND, OHIO

22336
 Received July 10, 1986 12:06 P.M.
 Received July 11, 1986
 Vol. 22 Pg. 1-1C
 FEE \$30.00
 William H. Hickey/Surveyor



LOT 10 VOL. 22, PG. 214	LOT 9 VOL. 22, PG. 213	LOT 8 VOL. 27, PG. 304	LOT 7 VOL. 22, PG. 207
----------------------------	---------------------------	---------------------------	---------------------------

CONDOMINIUM DRAWINGS FOR
 CATAWBA SHORES NORTH CONDOMINIUM

- LEGEND**
- LETTERS FROM A TO H & O DESIGNATE GARAGE SPACES, WHICH ARE LIMITED COMMON AREAS.
 - UNIT DESIGNATIONS IN PARENTHESES DESIGNATE PARKING SPACES, WHICH ARE LIMITED COMMON AREAS.
 - LCA DESIGNATES LIMITED COMMON AREAS.
 - AREAS NOT DESIGNATED WITH UNIT DESIGNATIONS OR AS LIMITED COMMON AREAS ARE COMMON AREAS.
 - DESIGNATES LIMITED COMMON AREAS.



WE CERTIFY THAT THESE DRAWINGS ACCURATELY SHOW ALL BALANCES OF CATAWBA SHORES NORTH CONDOMINIUM AS CONSTRUCTED.

William H. Hickey
 SURVEYOR
 LICENSE NUMBER 2007032
 EXPIRES 9/1/88



CONDOMINIUM DOCUMENT
 1 of 4



5555 UNIVERSITY
 DELE. 19804-3352
 814/724-1280