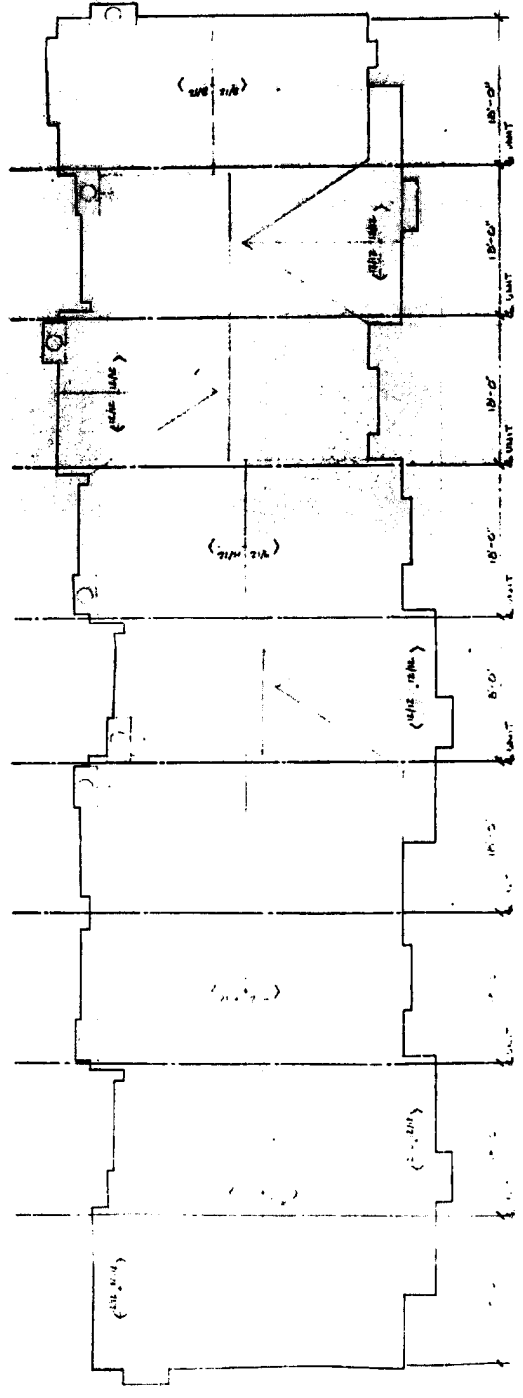


10
11
12
13
14
15
16
17
18
19
20
21
22
23
24
25
26
27
28
29
30
31
32
33
34
35
36
37
38
39
40
41
42
43
44
45
46
47
48
49
50
51
52
53
54
55
56
57
58
59
60
61
62
63
64
65
66
67
68
69
70
71
72
73
74
75
76
77
78
79
80
81
82
83
84
85
86
87
88
89
90
91
92
93
94
95
96
97
98
99
100

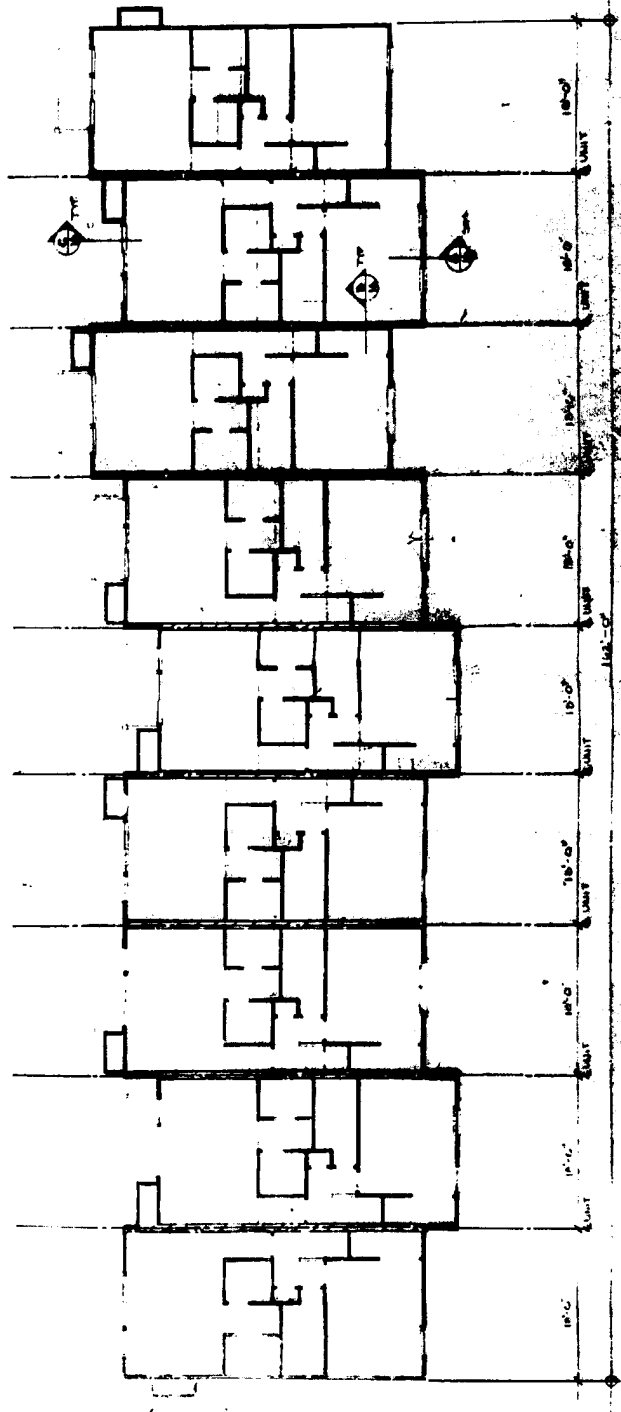
7B



11721
William R. Linn
Professional Engineer
State of South Carolina
License No. 11721

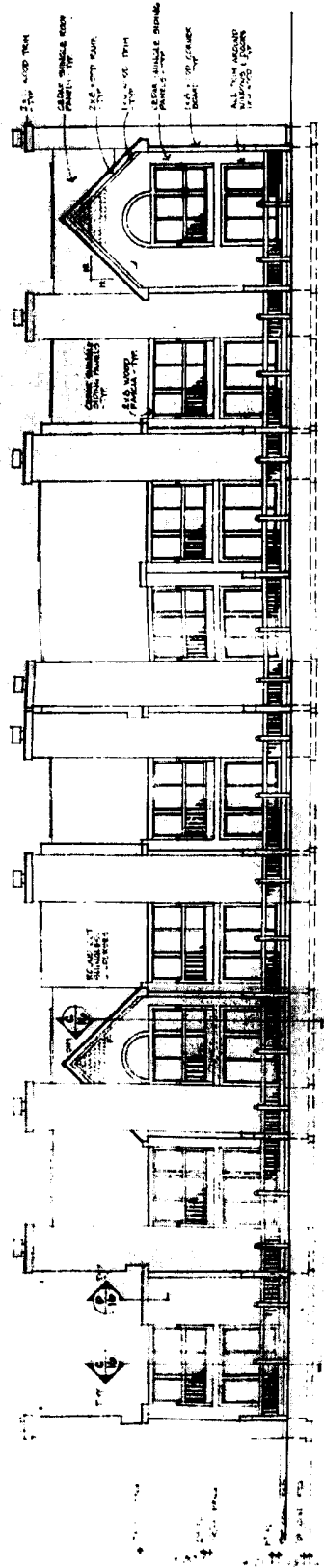


roof plan
SEE SHEET 7B FOR
ELECTRICAL SYMBOLS

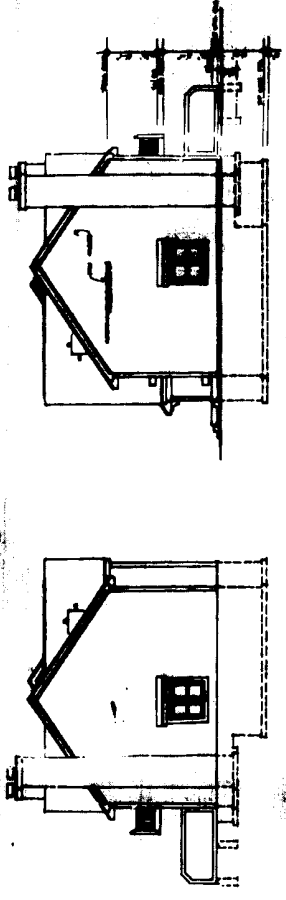


second floor plan

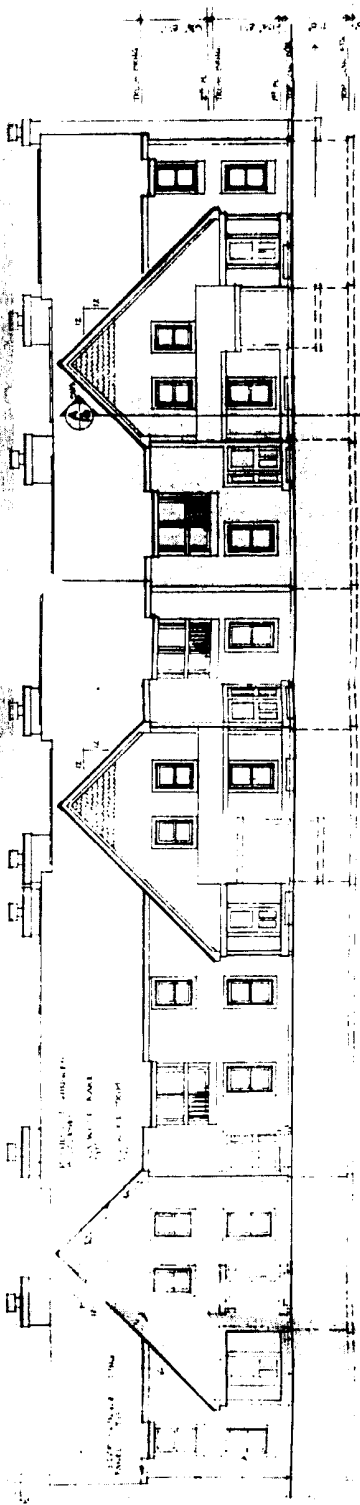
Architect: [unreadable]
Engineer: [unreadable]



South elevation
1/8" = 1'-0"



18721
 Revised Specifications
 Approved April 19, 1928
 Robert G. T. C. Inc. Architects
 210 W. R. Avenue, Columbus, Ohio



North elevation
1/8" = 1'-0"



Printed and Published by
 GARDNER
 100 W. Broad Street, Columbus, Ohio