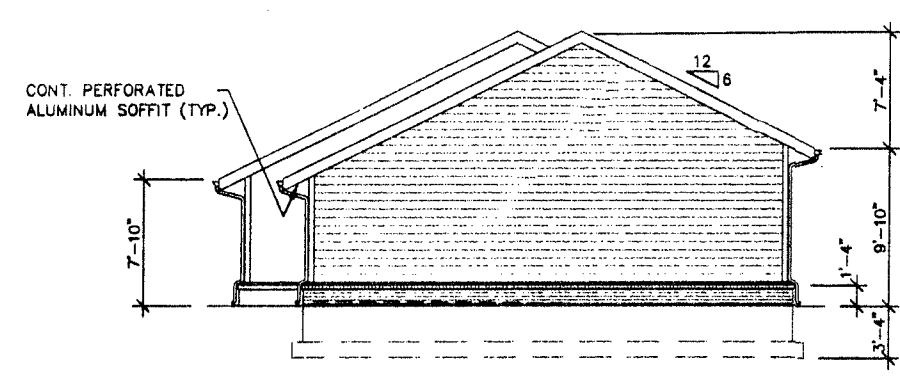
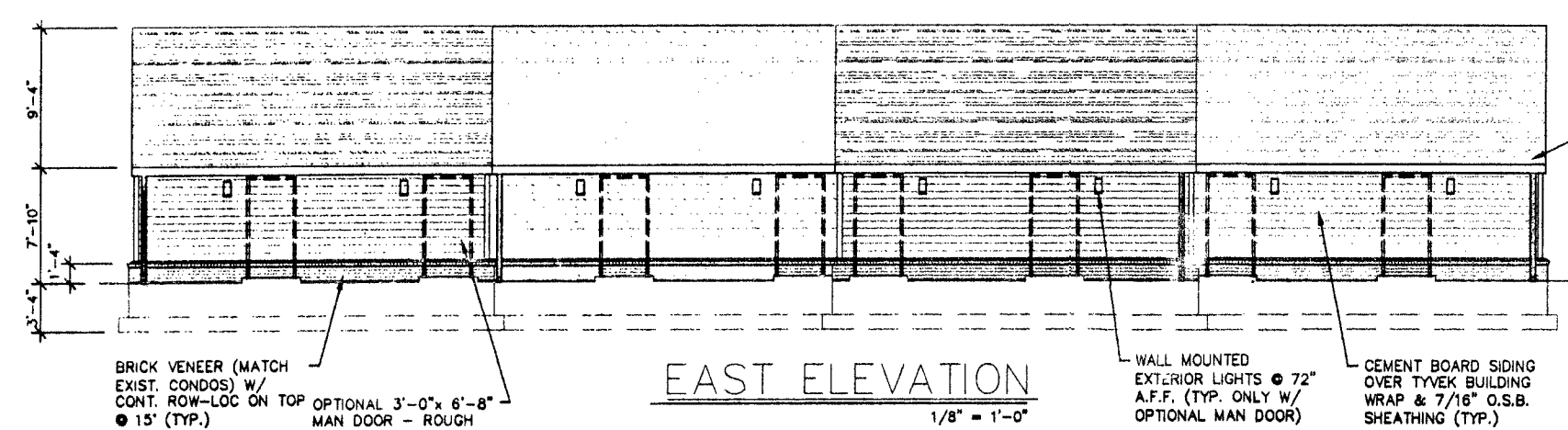


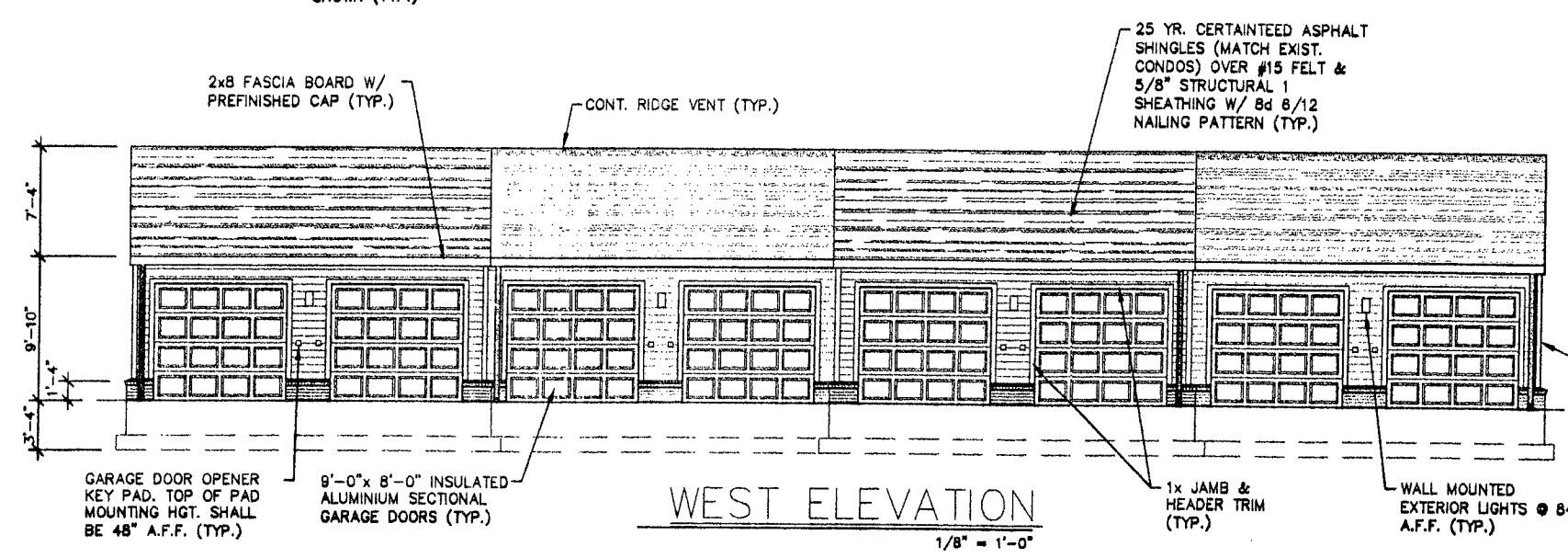
SOUTH ELEVATION
1/8" = 1'-0"



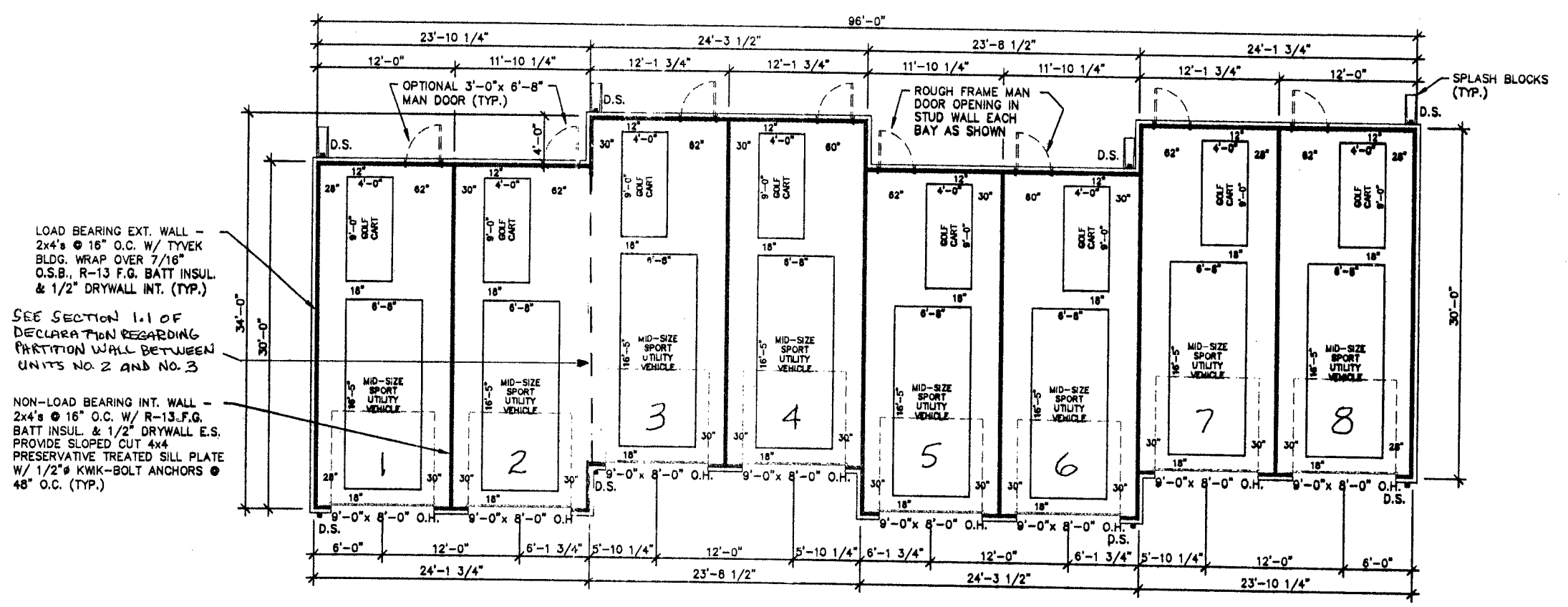
NORTH ELEVATION
1/8" = 1'-0"



EAST ELEVATION
1/8" = 1'-0"



WEST ELEVATION
1/8" = 1'-0"



FLOOR PLAN
1/8" = 1'-0"

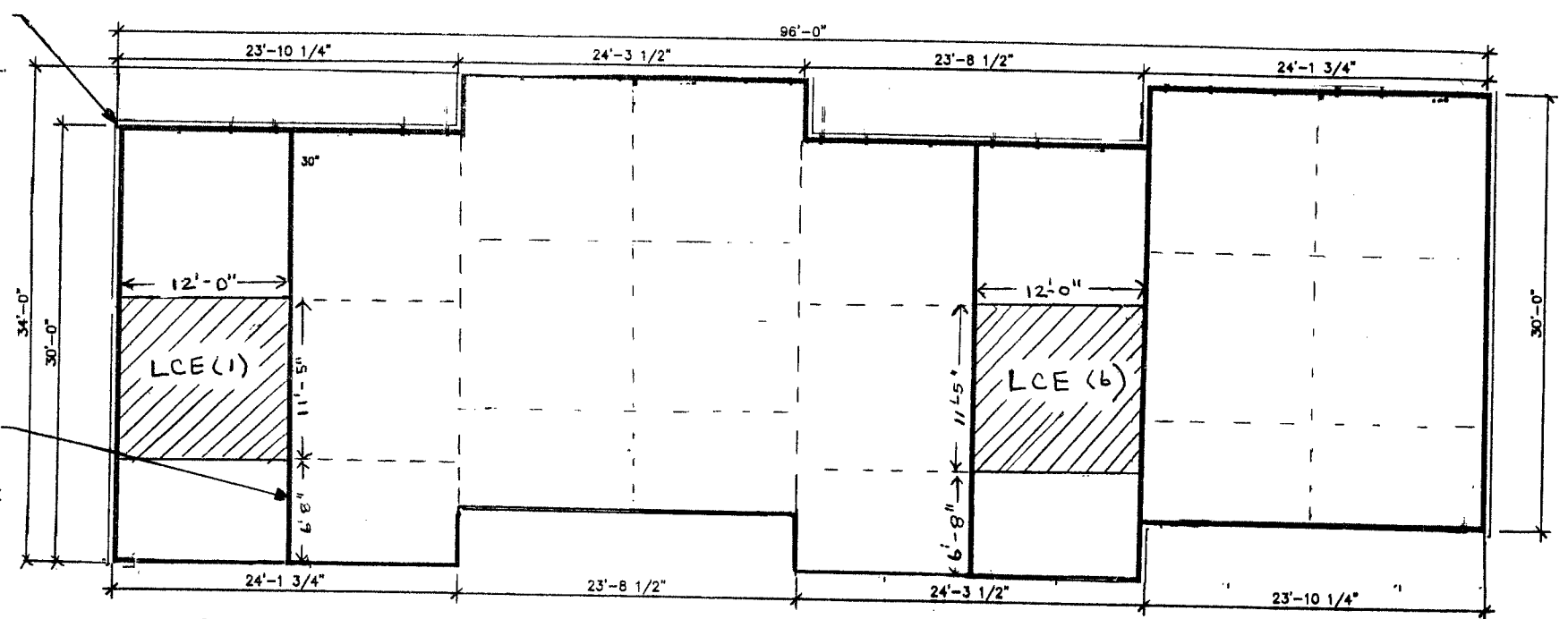
LOAD BEARING EXT. WALL -
2x4's @ 16" O.C. W/ TYVEK
BLDG. WRAP OVER 7/16"
O.S.B., R-13 F.G. BATT INSUL
& 1/2" DRYWALL INT. (TYP.)

SEE SECTION 1.1 OF
DECLARATION REGARDING
PARTITION WALL BETWEEN
UNITS NO. 2 AND NO. 3

NON-LOAD BEARING INT. WALL -
2x4's @ 16" O.C. W/ R-13 F.G.
BATT INSUL & 1/2" DRYWALL E.S.
PROVIDE SLOPED CUT 4x4
PRESERVATIVE TREATED SILL PLATE
W/ 1/2" KWK-BOLT ANCHORS @
48" O.C. (TYP.)

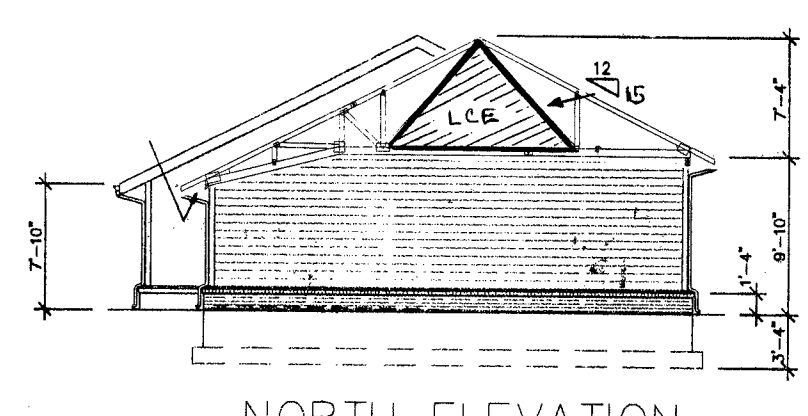
LOAD BEARING EXT. WALL -
2x4's @ 16" O.C. W/ TYVEK
BLDG. WRAP OVER 7/16"
O.S.B., R-13 F.G. BATT INSUL
& 1/2" DRYWALL INT. (TYP.)

NON-LOAD BEARING INT. WALL -
2x4's @ 16" O.C. W/ R-13 F.G.
BATT INSUL & 1/2" DRYWALL E.S.
PROVIDE SLOPED CUT 4x4
PRESERVATIVE TREATED SILL PLATE
W/ 1/2" KWK-BOLT ANCHORS @
48" O.C. (TYP.)



STORAGE LOFTS FLOOR PLAN
1/8" = 1'-0"

STORAGE LOFT LIMITED
COMMON ELEMENT. SEE
SECTION 1.4 OF DECLARATION



NORTH ELEVATION
1/8" = 1'-0"