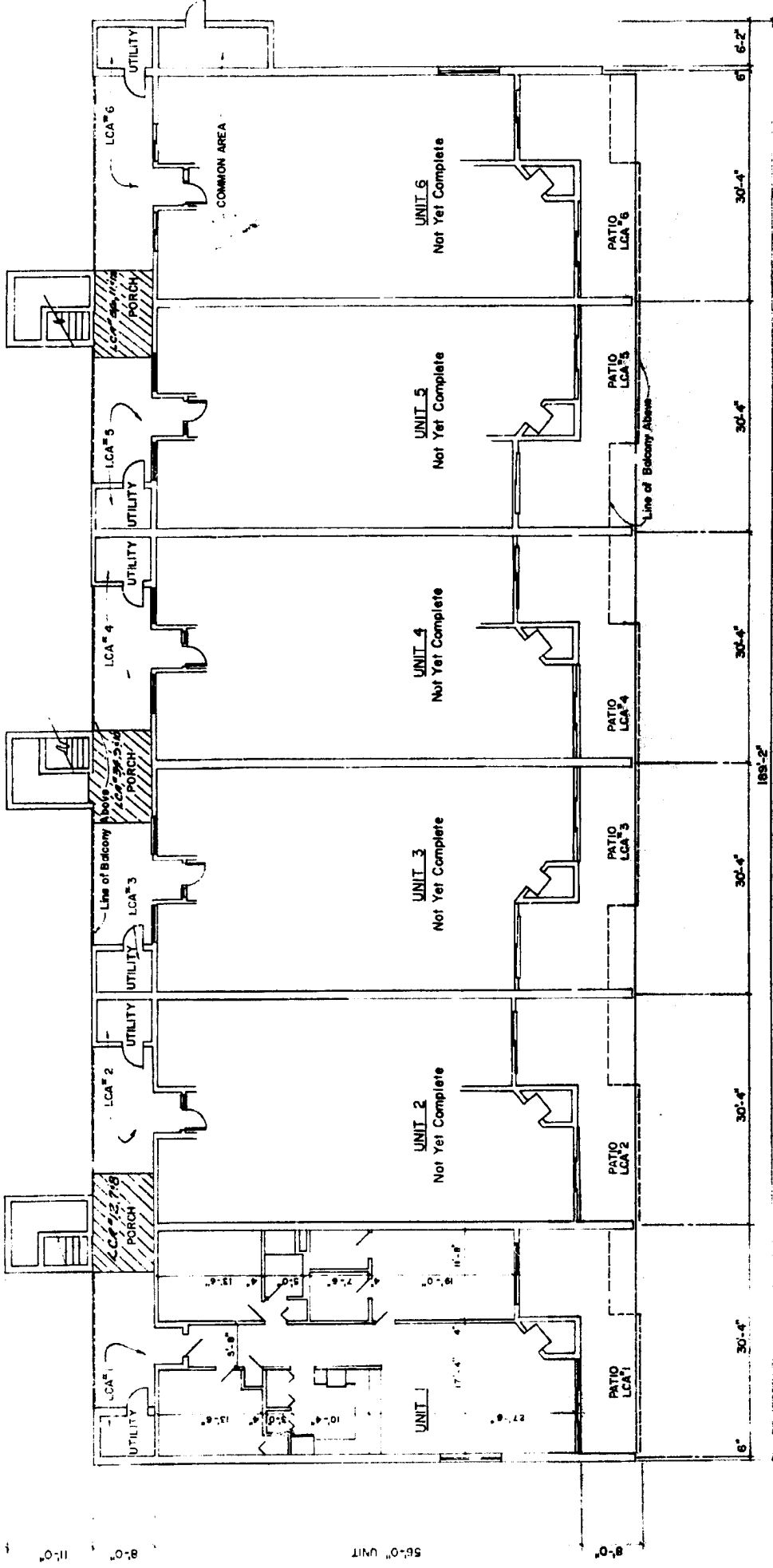


GARBER'S
 22 S. WASHINGTON ST. WILMINGTON, DE. 19801
 (302) 426-1111



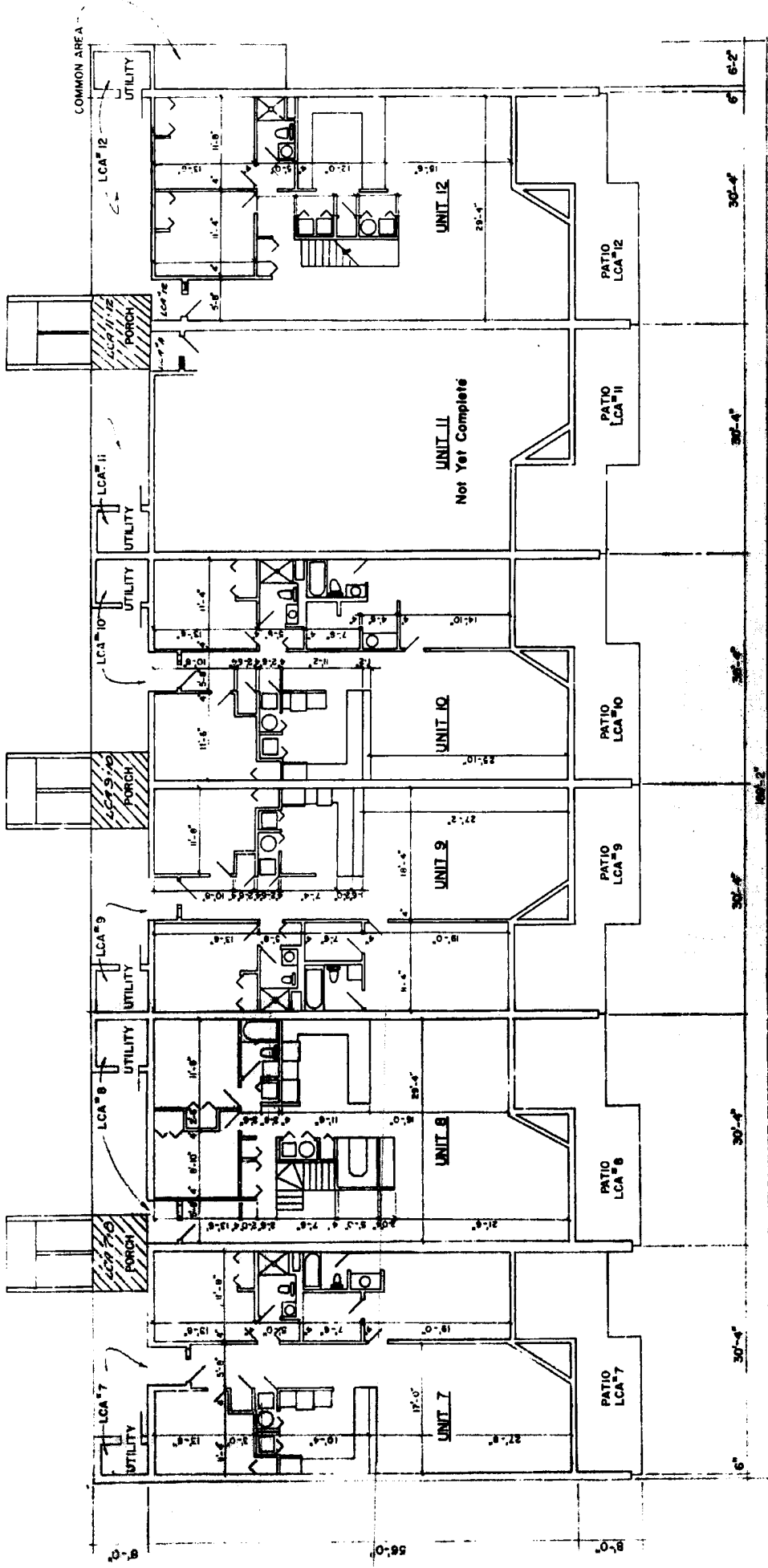
FIRST FLOOR PLAN

SCALE 1/8" = 1'-0"

**CATAWBA ISLAND CLUB
CONDOMINIUM NO. 8**

14855
 Revised June 15, 1985 10:35 AM
 Received June 19, 1985 Jan 3605
 William K. Lewis 7/22/84

PROFESSIONAL ARCHITECT
GARBER S
23 S. MAIN ST.
CATAWBA, N.C. 28603
PHONE: 828-237-1111
FAX: 828-237-1112



SECOND FLOOR PLAN

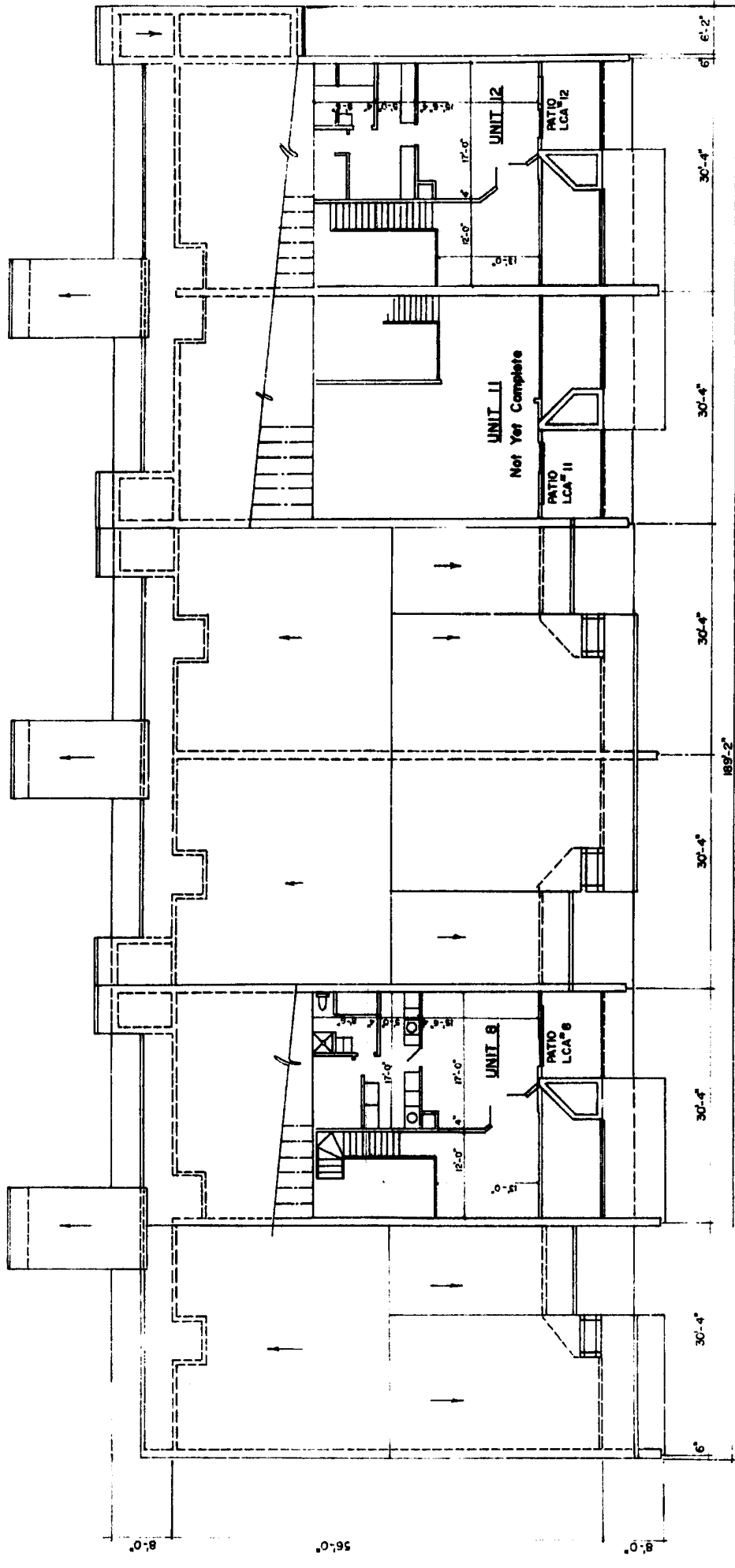
SCALE 1/8" = 1'-0"

CATAWBA ISLAND CLUB

CONSTRUCTION NO. 110 0

4855
Revised 12-13-85
Revised 12-19-85
Catawba Island Club

GARBER'S ARCHITECTURE
22 S. BROADWAY, SUITE 200, NEW YORK, NY 10004
Tel: (212) 677-1111



THIRD FLOOR PLAN
 SCALE 1/8" = 1'-0"
CATAWBA ISLAND CLUB
CONDOMINIUM NO. 8

1485E
 Revised June 12, 1988 10:45 AM
 Revision June 21, 1988 Jan. 20, 1988
 William R. Cannon Jr. 20 P/B/C