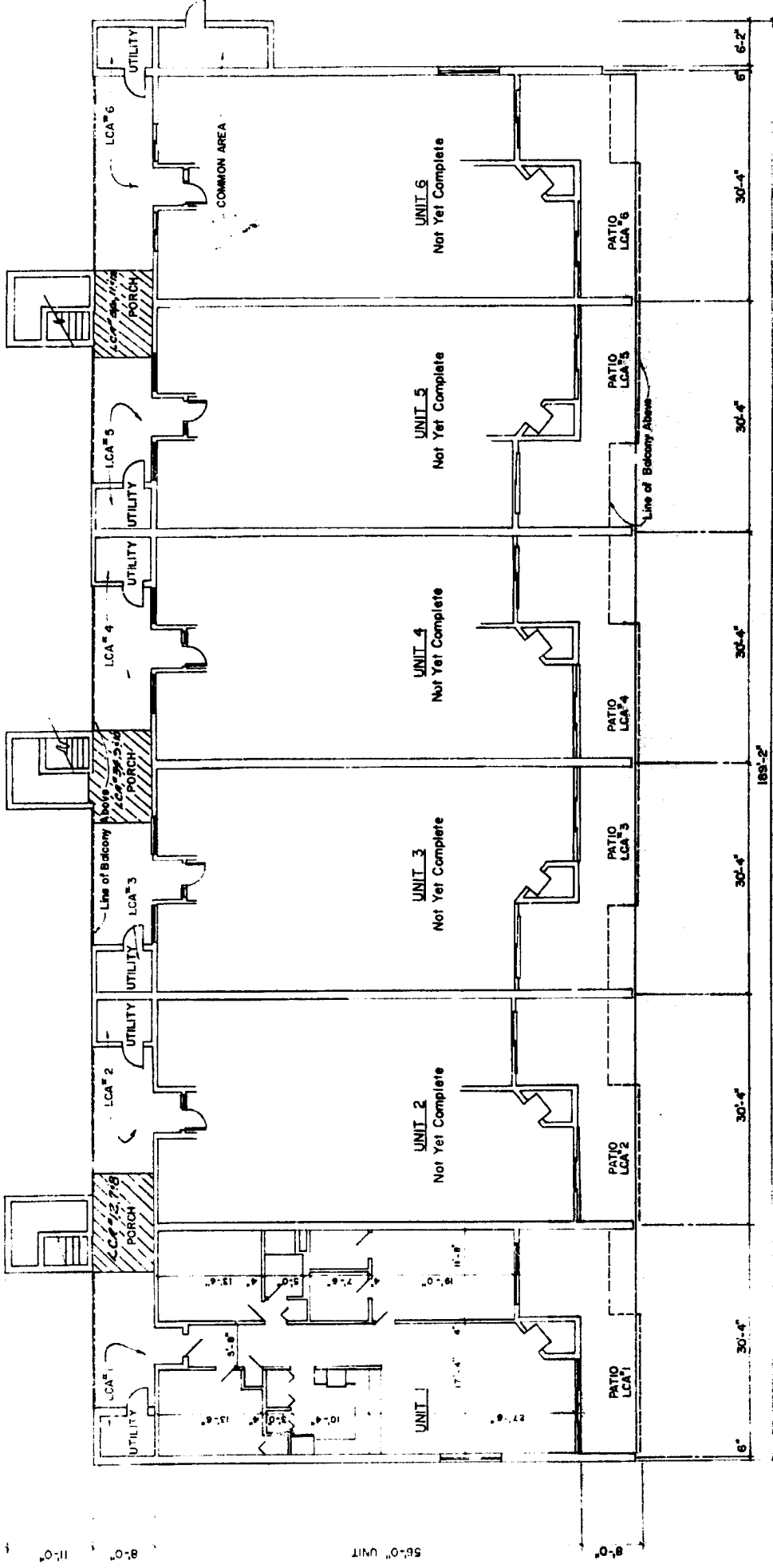


GARBER'S  
 22 S. WASHINGTON ST. SUITE 100  
 WILMINGTON, DE 19801  
 (302) 426-1111



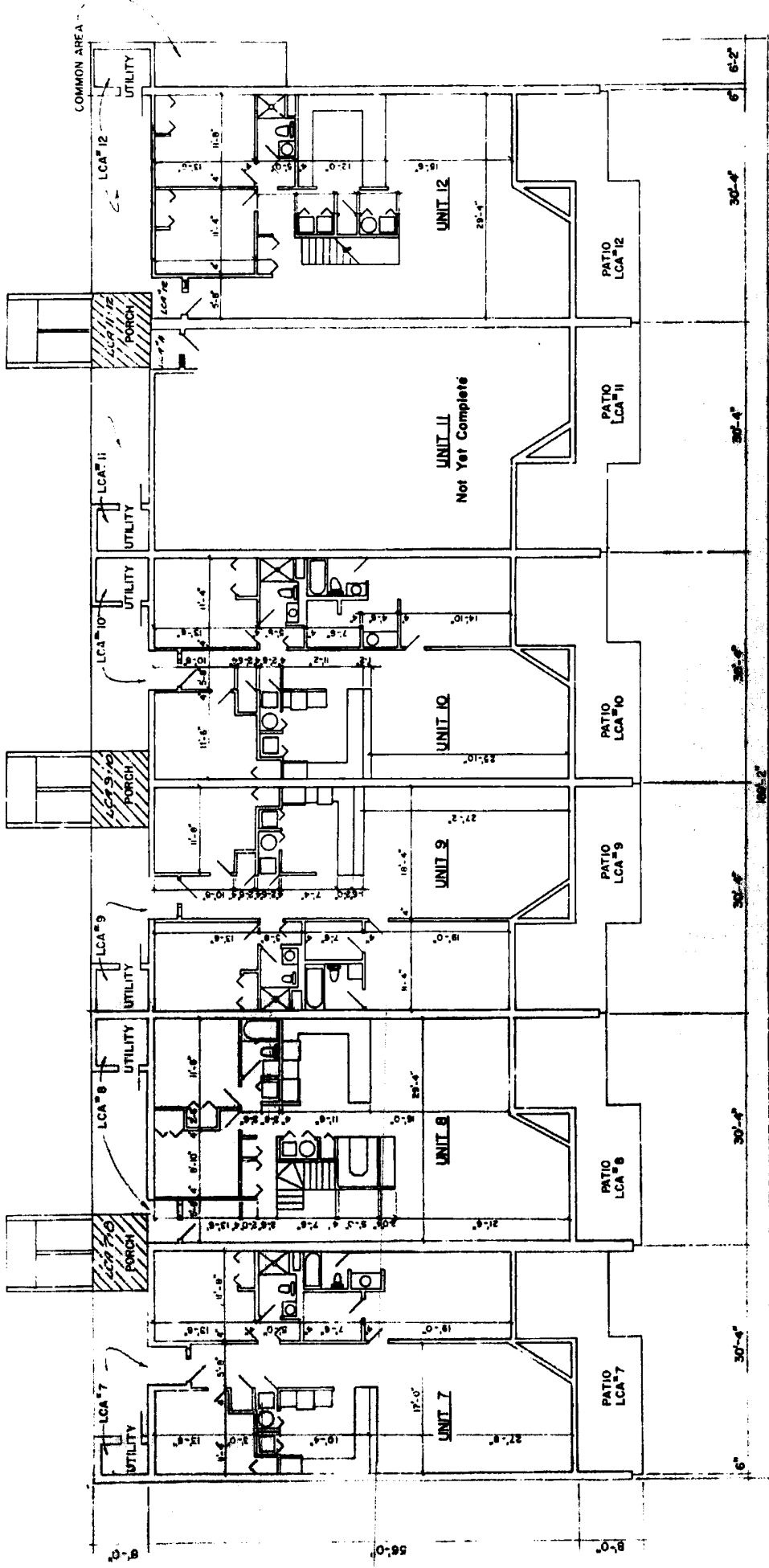
**FIRST FLOOR PLAN**

SCALE 1/8" = 1'-0"

**CATAWBA ISLAND CLUB  
CONDOMINIUM NO. 8**

# 14855  
 Revised June 15, 1985 10:35 AM  
 Received June 19, 1985 Jan 3605  
 William K. Lewis, Jr. 7/22/84

PREPARED BY  
 ARCHITECT  
 GARBER S  
 23 S. MAIN ST.  
 WASHINGTON, D.C. 20004  
 DRAWN BY  
 J. L. HARRIS  
 1000 14th St. N.W.  
 WASHINGTON, D.C. 20005



**SECOND FLOOR PLAN**

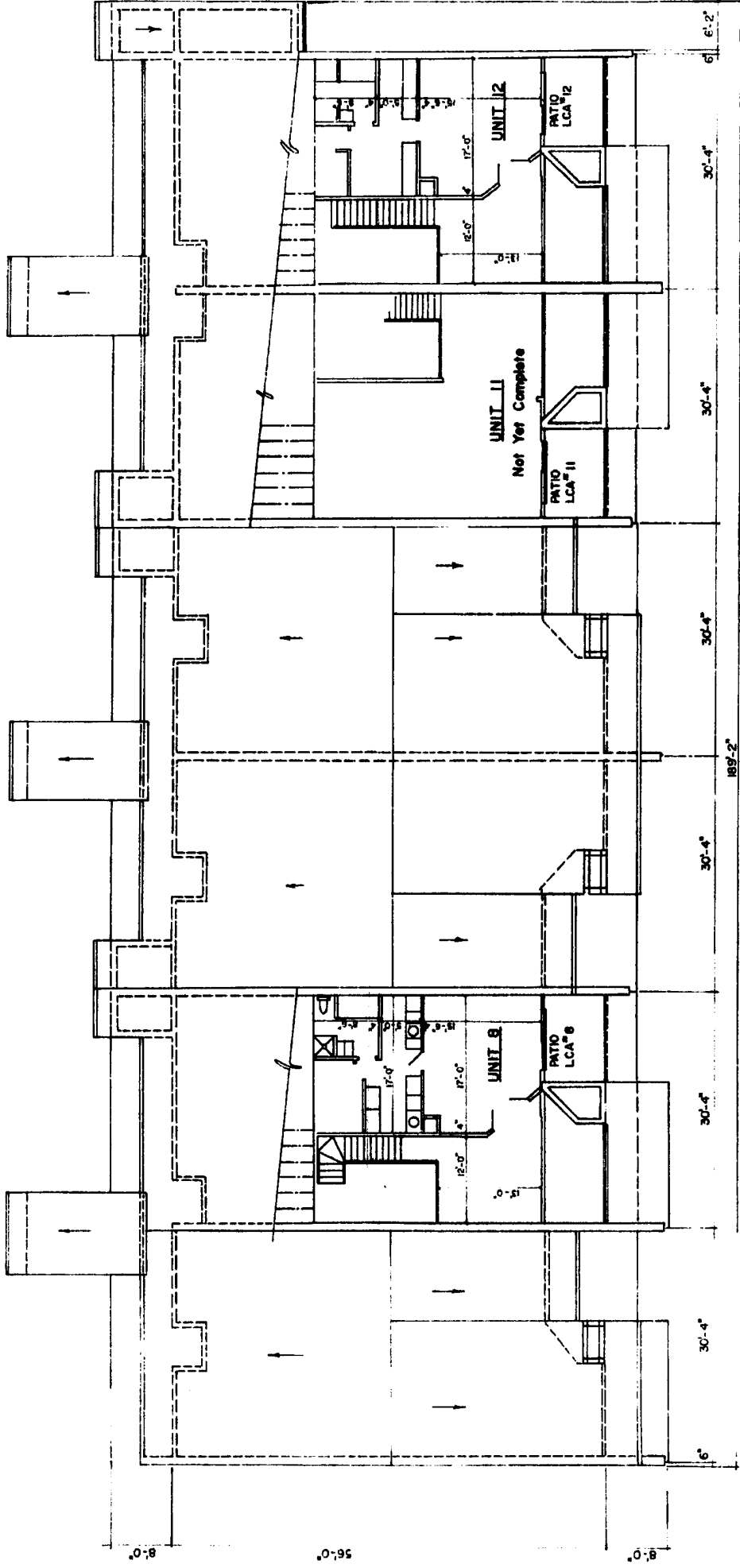
SCALE 1/8" = 1'-0"

**CATAWBA ISLAND CLUB**

CONSTRUCTION & S.I.C.

# 4855  
 Revised 12-13-85  
 Revised Jan 17, 1986  
 William L. Harris

**GARBER'S**  
ARCHITECTS  
22 S. BROADWAY  
BALTIMORE, MD 21201  
TEL. 551-1111



**THIRD FLOOR PLAN**  
SCALE 1/8" = 1'-0"  
**CATAWBA ISLAND CLUB**  
**CONDOMINIUM NO. 8**

# 1485E  
Revised June 12, 1988 10:45 AM  
Revised June 21, 1988 Jan. 20, 1988  
William R. Cannon Jr. 20 P/88