

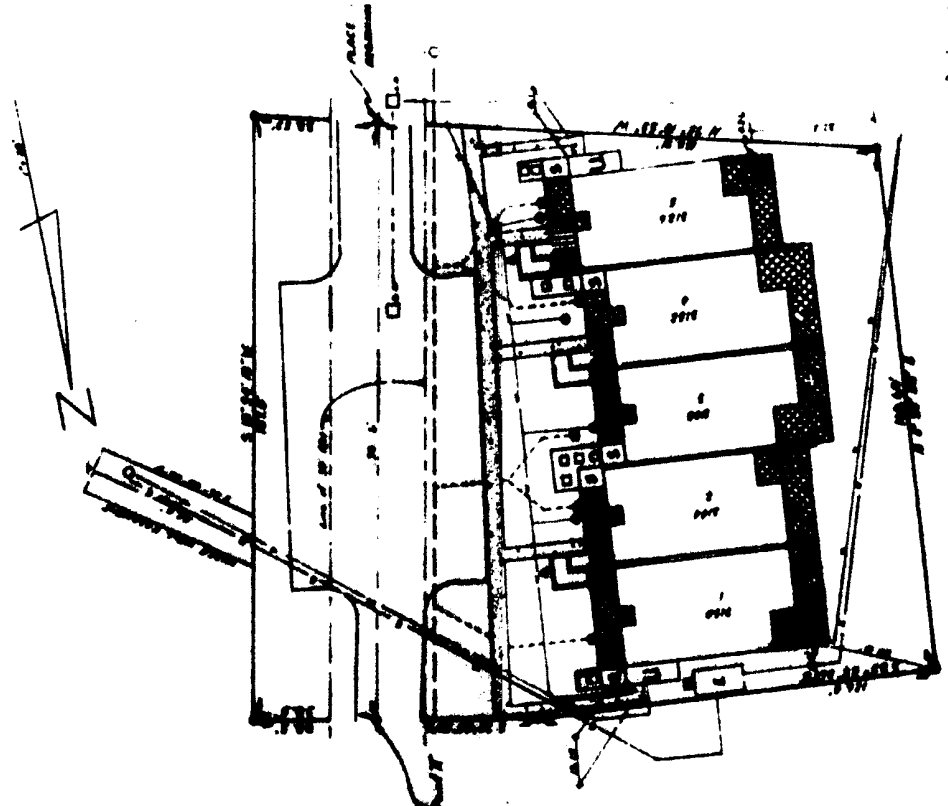
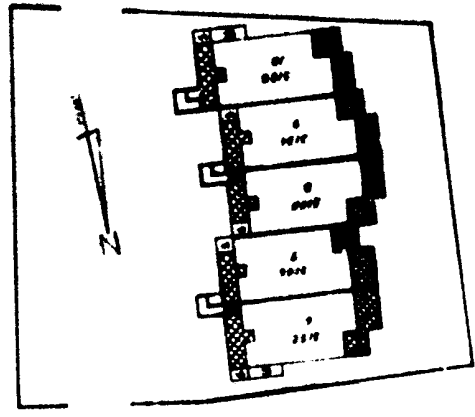
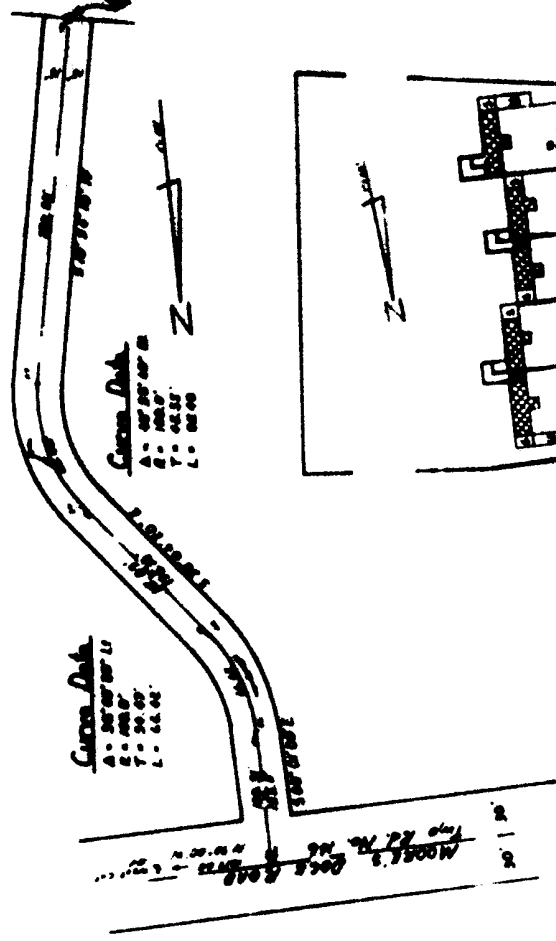
FLAT OF  
**CATAWBA ISLAND CLUB**  
**CONDOMINIUM NO. FIVE**  
 IN CATAWBA ISLAND RESORT, OTTAWA COUNTY

ONE

**LEGEND**

- A - Units Common Area
- B - LCA for adjacent units
- C - First Floor LCA (units adjacent from lower units and the two units directly above)
- D - First Floor LCA (two units adjacent units and directly above)
- E - Second Floor LCA (two adjacent units)
- F - Concrete Walk Common Area
- G - LCA for condomyium units
- H - Sewer Man
- I - Calks Bars
- J - Manhole
- K - Sewer Cleanout
- L - Manhole
- M - LCA - Storage (two story unit) adjacent to stairs and window
- N - Electric Meters
- O - Telephones
- P - Electric Transformer Area
- Q - Sewer Latrine
- R - Fire
- S - Storm Sewer
- T - Hydrant
- U - Air Conditioning
- V - Electric Case
- W - Telephone Cable
- X -
- Y -
- Z -

DETAIL OF ACCESS ROADWAY



DATE: 10/10/78

I hereby certify that this set of drawings accurately shows the building or building as constructed.

*Robert J. Blodgett*  
 Licensed Surveyor No. 5000  
 Professional Engineer No. 10000

Amount of P.O. of this building shown on plan and not the actual area within P.O. area.